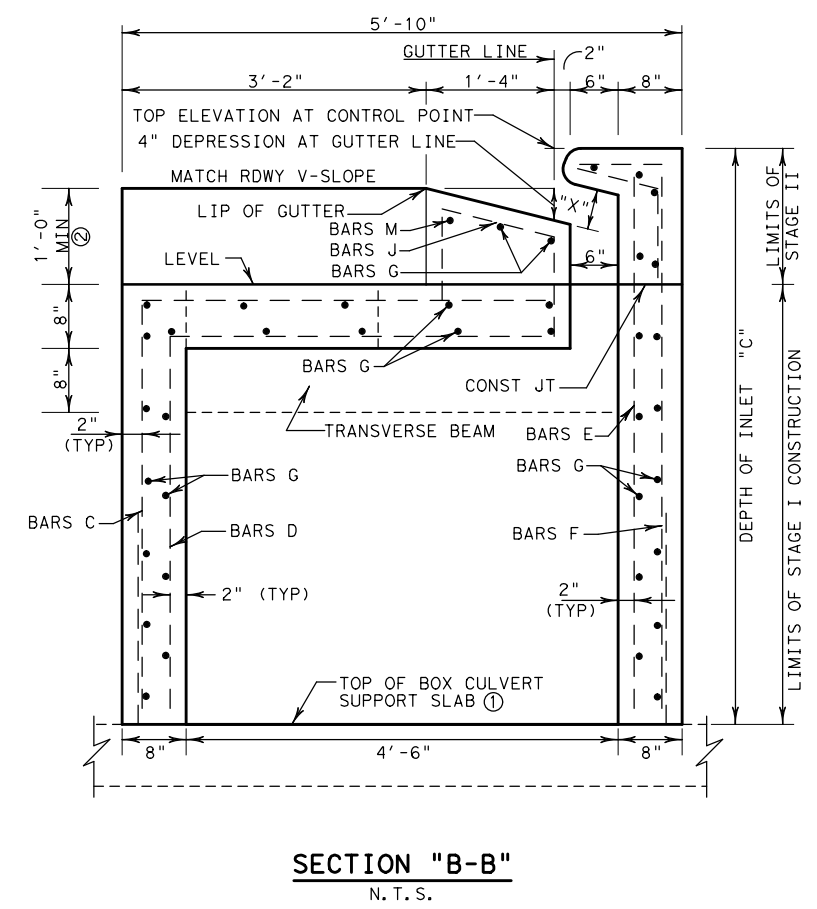
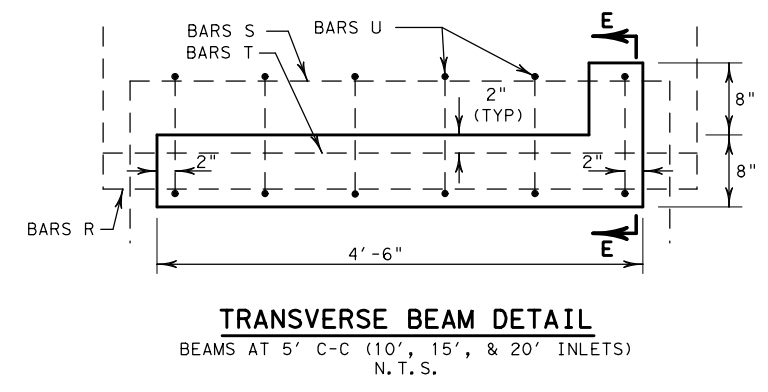
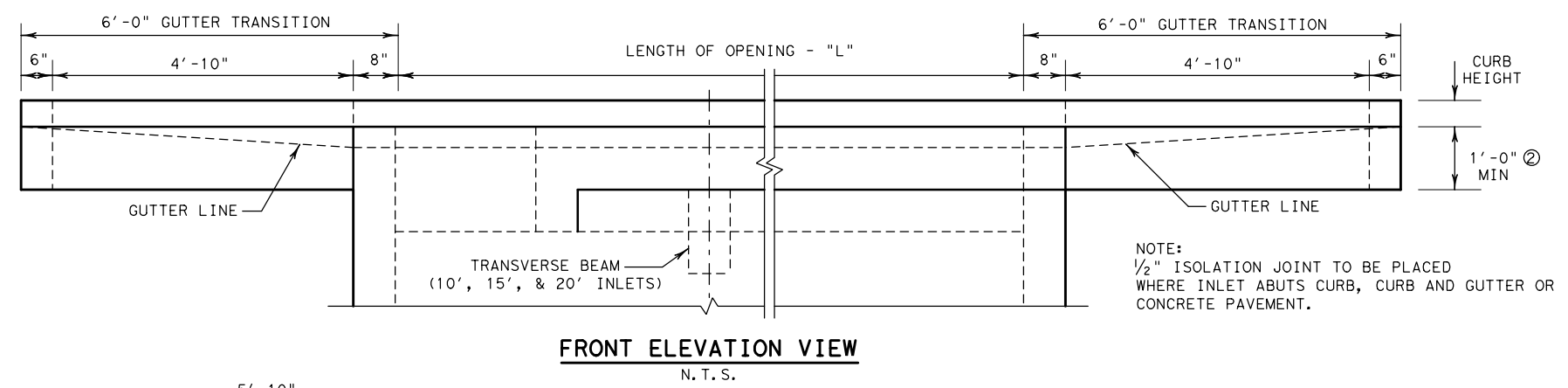
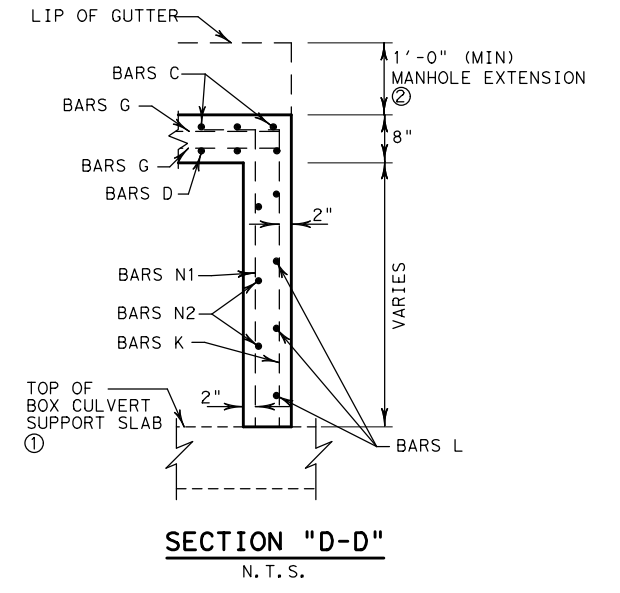
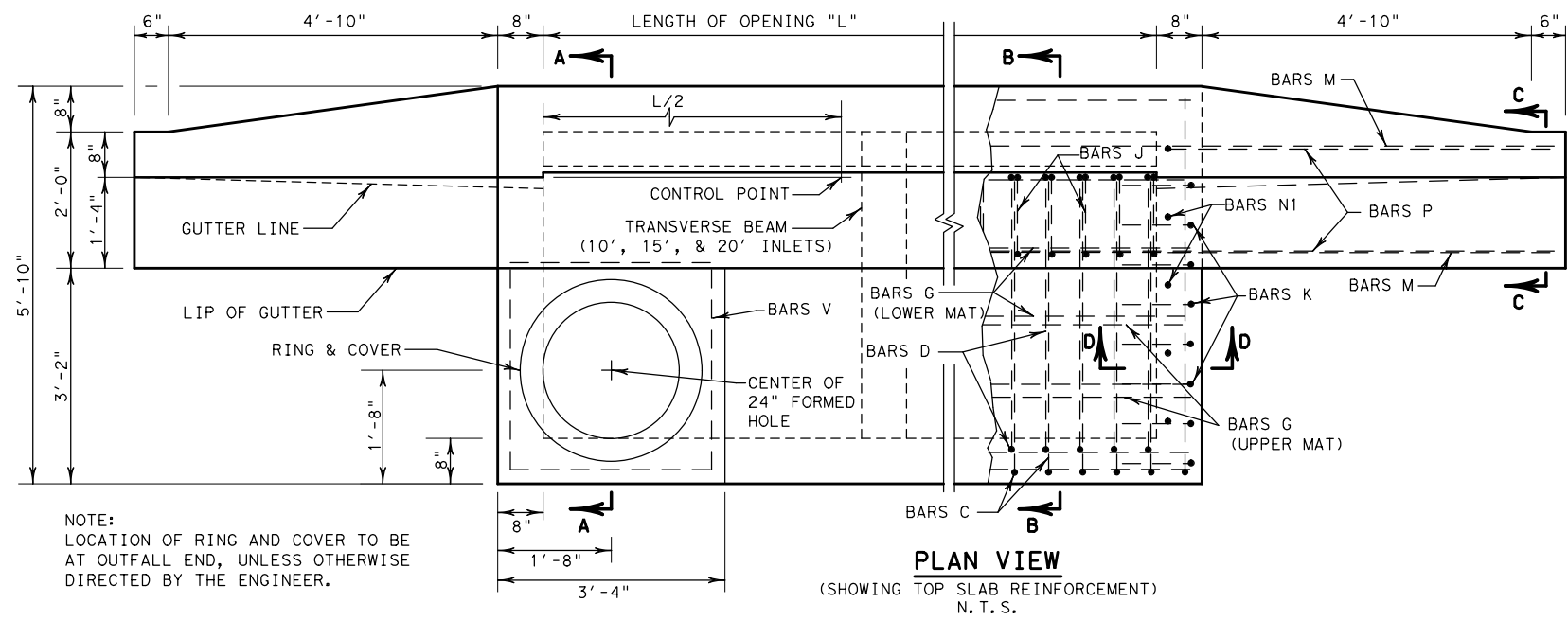


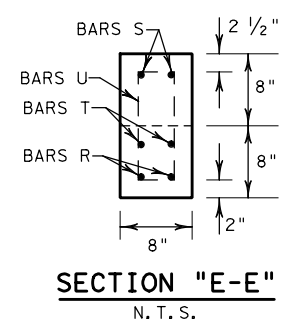
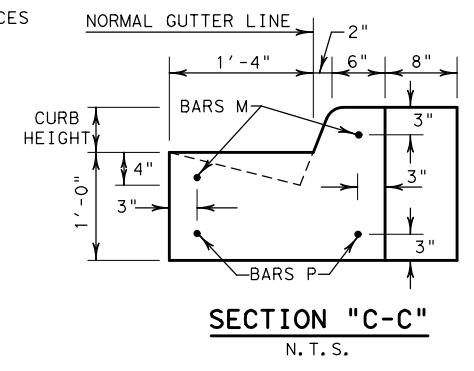
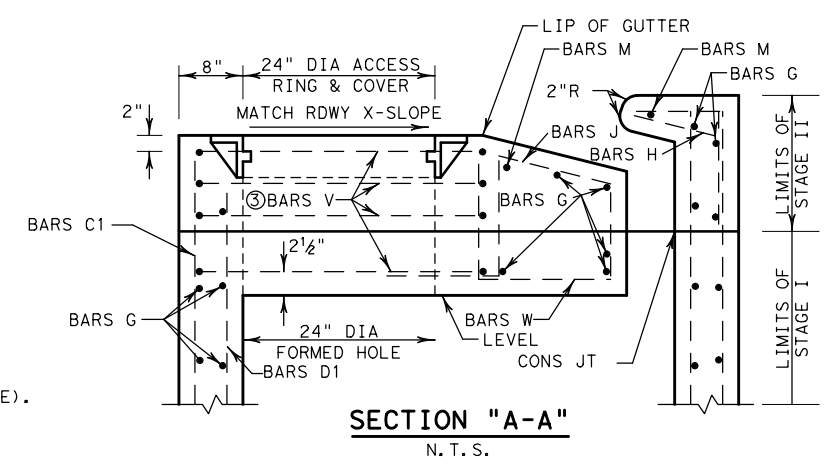
DISCLAIMER: THIS STANDARD IS COVERED BY THE "TEXAS ENGINEERING PRACTICE ACT". NO WARRANTY OF ANY KIND IS MADE BY TxDOT FOR ANY PURPOSE WHATSOEVER. TxDOT ASSUMES NO RESPONSIBILITY FOR THE CONVERSION OF THIS STANDARD TO OTHER FORMATS OR FOR INCORRECT RESULTS OR DAMAGES RESULTING FROM ITS USE.

http://www.dot.state.tx.us/ftw/specinfo/standard.htm  
 11/5/2020 3:29:39 PM  
 P:\PROJECTS\TXDOT\16121\5 FTW Standards Revision\CADD\Modifications in Progress\fcuc-ftw.dgn



THROAT DIMENSION	
CURB HEIGHT	"X"
5"	5"
6"	5 7/8"
7"	6 1/4"
8"	6 1/2"

- ① SEE MI-CBC FOR SUPPORT SLAB DETAILS.
- ② MATCH DEPTH OF PAVEMENT STRUCTURE (BASE AND SURFACE). ADJUST BAR LENGTHS AS DIRECTED BY THE ENGINEER. (SEE DETAIL, SHEET 2 OF 2)
- ③ STAGE II BARS V @ EQUAL SPACES



SEE SHEET 2 OF 2 FOR DETAILS OF REINFORCING, BILL OF REINFORCING STEEL, SUMMARY OF QUANTITIES AND GENERAL NOTES.

		<b>Fort Worth District Standard</b>	
<h2>CURB INLET UNDER PAVEMENT FOR USE WITH TYPE II CURB AND BOX CULVERT OR SEWER I-CU-C (FTW)</h2>			
ORIGINAL DRAWING: 05/2019	icuc-ftw.dgn	FED. RD. DIV. NO. 6	PROJECT NO.
DATE	REVISIONS		
05/2019	REPLACES CI-2-08-BC (FTW)	STATE TEXAS	DIST. NO. FTW
11/2020	REVISE JOINT NOMENCLATURE	CONT.	SECT. JOB HIGHWAY NO.

DISCLAIMER: THIS STANDARD IS GOVERNED BY THE "TEXAS ENGINEERING PRACTICE ACT". NO WARRANTY OF ANY KIND IS MADE BY TxDOT FOR ANY PURPOSE WHATSOEVER. TxDOT ASSUMES NO RESPONSIBILITY FOR THE CONVERSION OF THIS STANDARD TO OTHER FORMATS OR FOR INCORRECT RESULTS OR DAMAGES RESULTING FROM ITS USE.

http://www.dot.state.tx.us/ftw/specinfo/standard.htm  
 11/5/2020 3:29:55 PM  
 P:\PROJECTS\TXDOT\16121\5 FTW Standards Revision\CADD\Modifications in Progress\16uc-ftw.dgn

BILL OF REINFORCING STEEL

Length "L"	Bars C		Bars C1		Bars D		Bars D1		Bars E		Bars F		Bars G		Bars H		Bars J		Bars K		Bars L		Bars M		Bars N1	
	#5	at 6" Spa	#5	at 6" Spa	#5	at 6" Spa	#5	at 6" Spa	#5	at 6" Spa	#5	at 6" Spa	#5		#4	at 12" Spa	#4	at 12" Spa	#4	at 7" Spa	#5	at 6" Spa	#4		#4	at 12" Spa
(ft)	No	Wt	No	Wt	No	Wt	No	Wt	No	Wt	No	Wt	No	Wt	No	Wt	No	Wt	No	Wt	No	Wt	No	Wt	No	Wt
5.0	6	54	7	39	4	38	7	37	11	67	13	90	47	294	7	9	7	21	16	56	14	138	2	22	10	29
10.0	16	145	7	39	14	131	7	37	21	128	23	160	47	539	12	15	12	35	16	56	14	138	2	29	10	29
15.0	26	235	7	39	24	225	7	37	31	189	33	229	47	784	17	21	17	50	16	56	14	138	2	36	10	29
20.0	36	325	7	39	34	319	7	37	41	249	43	299	47	1029	22	27	22	65	16	56	14	138	2	42	10	29

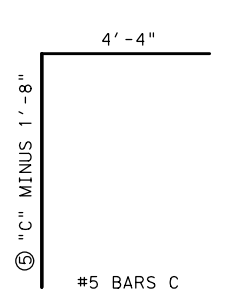
BILL OF REINFORCING STEEL

Length "L"	Bars N2		Bars P		Bars R		Bars S		Bars T		Bars U		Bars V		Bars W	
	#4	at 12" Spa	#4		#6		#6		#6		#4	at 10" Spa	#4		#4	
(ft)	No	Wt	No	Wt	No	Wt	No	Wt	No	Wt	No	Wt	No	Wt	No	Wt
5.0	8	29	4	15	0	0	0	0	0	0	0	0	4	35	6	11
10.0	8	29	4	15	2	23	2	21	2	17	6	13	4	35	6	11
15.0	8	29	4	15	4	45	4	43	4	33	12	26	4	35	6	11
20.0	8	29	4	15	6	68	6	64	6	50	18	39	4	35	6	11

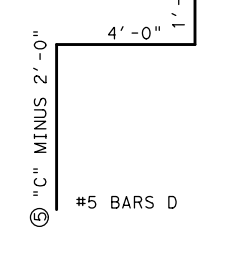
SUMMARY OF QUANTITIES

Length "L"	Total Reinf Steel Weight (Lb)	Steel Qty Adjust. P.L.F. (Lb)	Class "C" Concrete (CY)	Concrete Qty Adjust. P.L.F. (CY)
10.0	1,643	236.1	6.61	0.77
15.0	2,304	314.3	8.76	1.03
20.0	2,965	392.5	10.90	1.29

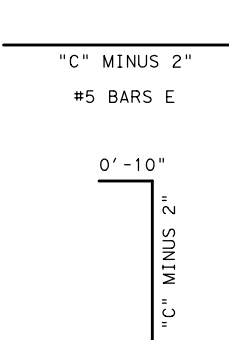
⑤ "C" MINUS 0'-8"



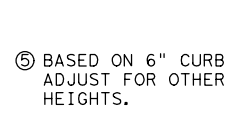
⑤ "C" MINUS 1'-8"



⑤ "C" MINUS 2'-0"



"C" MINUS 2"

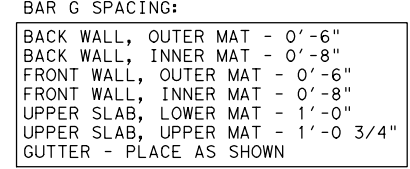


⑤ "C" MINUS 2"

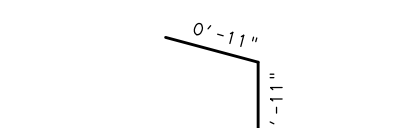
⑤ "C" MINUS 1'-0"

#5 BARS D1

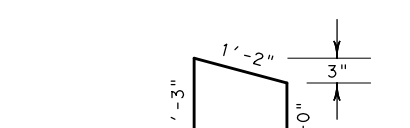
"L" + 1'-0"



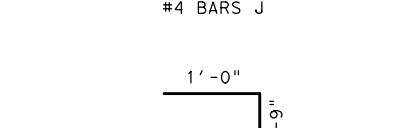
⑤ "C" MINUS 1'-8" (N1)



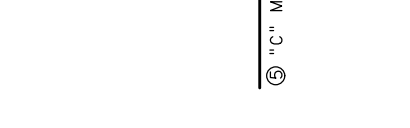
5'-8"



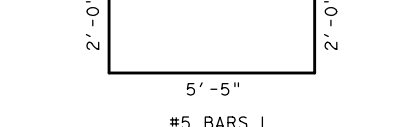
5'-6"



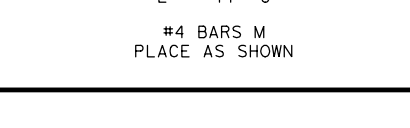
5'-1"



5'-6"

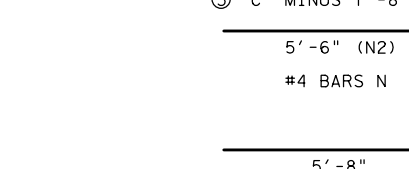


1'-0"

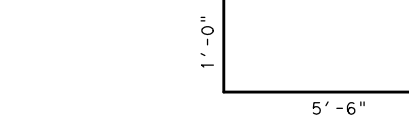


#4 BARS J

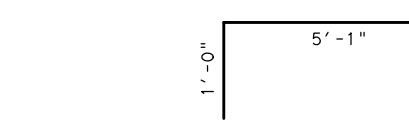
"L" + 11'-8"



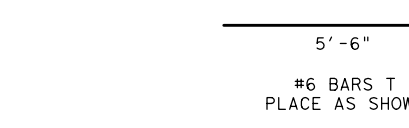
⑤ "C" MINUS 1'-8" (N1)



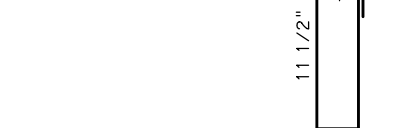
5'-8"



5'-6"



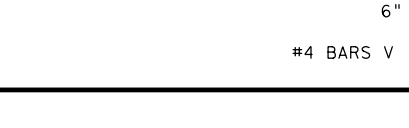
5'-1"



5'-6"

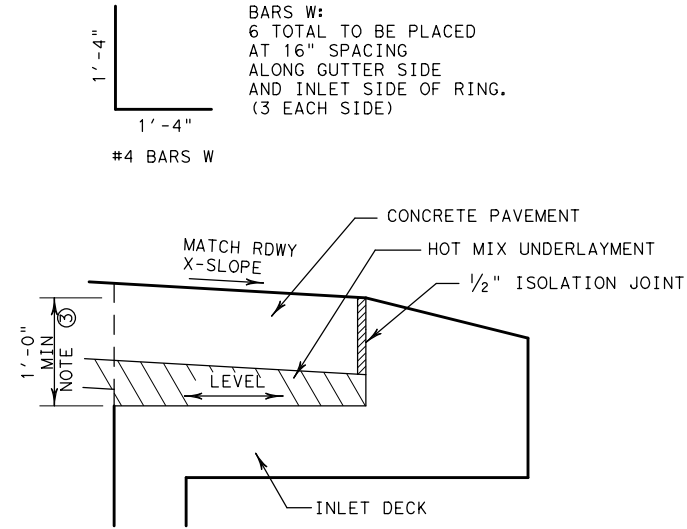


1'-0"

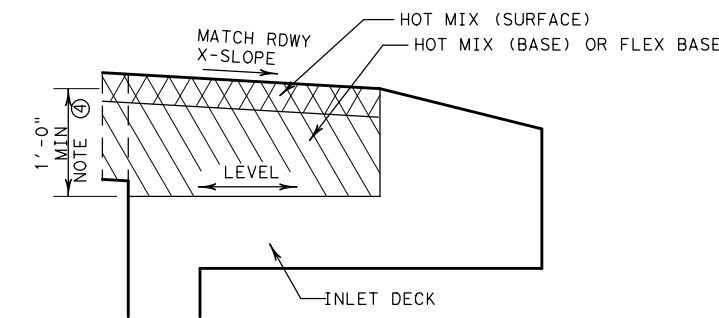


#4 BARS J

BAR G SPACING:  
 BACK WALL, OUTER MAT - 0'-6"  
 BACK WALL, INNER MAT - 0'-8"  
 FRONT WALL, OUTER MAT - 0'-6"  
 FRONT WALL, INNER MAT - 0'-8"  
 UPPER SLAB, LOWER MAT - 1'-0"  
 UPPER SLAB, UPPER MAT - 1'-0 3/4"  
 GUTTER - PLACE AS SHOWN



INLET ADJACENT TO CONCRETE PAVEMENT



INLET ADJACENT TO HOT MIX PAVEMENT

GENERAL NOTES

- DESIGNED FOR AASHTO LRFD HL-93 LOADING.
- ALL CONCRETE FOR CAST-IN-PLACE STRUCTURES SHALL BE CLASS "C"; ALL CONCRETE FOR PRECAST STRUCTURES SHALL BE CLASS "H" (MINIMUM 5000 PSI DESIGN STRENGTH).
- ALL REINFORCING STEEL SHALL BE GRADE 60.
- STAGE I MAY BE EITHER CAST-IN-PLACE OR PRECAST. FABRICATE PRECAST STRUCTURES USING REBAR AS DETAILED HEREON, WITH BARS C, D, E, F AND J TO BE INCLUDED WITH STAGE I. SPLICING OF BARS WILL NOT BE PERMITTED, EXCEPT AS NOTED.
- STAGE II SHALL BE CAST-IN-PLACE.
- CHAMFER ALL EXPOSED CORNERS 3/4", EXCEPT WHERE NOTED OTHERWISE.
- DIMENSIONS RELATING TO REINFORCING STEEL ARE TO THE CENTERS OF BARS.
- FIELD CUT AND BEND BARS AS NECESSARY TO ACCOMMODATE STORM DRAIN PIPE.
- FOR PIPE AND BOX CONNECTIONS TO PRECAST INLETS, SEE STANDARD DETAIL SHEET PBGC.
- INSTALL RING AND COVER AT OUTFALL END OF INLET, UNLESS OTHERWISE DIRECTED. CAST IRON RING AND COVER SHALL CONFORM TO ITEM 471. SEE STANDARD MDD (FTW) FOR RING AND COVER DETAILS.
- DEPTHS OTHER THAN THOSE SHOWN MAY BE USED WHENEVER NECESSARY, UP TO A MAXIMUM DEPTH OF 15'. QUANTITIES FOR OTHER DEPTHS MAY BE DETERMINED BY INTERPOLATION.
- DO NOT COMMENCE WITH STAGE II CONSTRUCTION UNTIL CONCRETE PAVEMENT AND CURB, OR CONCRETE CURB AND GUTTER CONSTRUCTION IS COMPLETED AT THE INLET SITE.
- INSTALL A TEMPORARY WOOD COVER AFTER STAGE I IS COMPLETED, TO REMAIN IN PLACE UNTIL STAGE II CONSTRUCTION BEGINS.
- THE LOCATION OF INLET AS SHOWN IN THE PLAN REFERS TO THE CONTROL POINT AT THE FACE OF CURB AND MID-POINT OF THE INLET.
- IF CONCRETE PAVEMENT IS PLACED WITHOUT UNDERLAYMENT, PLACE BOND BREAKER (3 LAYERS OF 30# ROOFING FELT OR 1/2" EXPANSION JOINT MATERIAL) BETWEEN INLET DECK AND CONCRETE PAVEMENT.
- PLACE A SEALED 1/2" ISOLATION JOINT ALONG ALL VERTICAL FACES ABUTTING CONCRETE PAVEMENT, CURB, CURB AND GUTTER, OR SIDEWALK. USE CLASS 5 OR 8 JOINT SEALANT TO SEAL THE JOINT. SEE STANDARD JS (FTW) FOR ADDITIONAL INFORMATION.

SHEET 2 OF 2 SHEETS

		<b>Fort Worth District Standard</b>	
<p><b>CURB INLET UNDER PAVEMENT FOR USE WITH TYPE II CURB AND BOX CULVERT OR SEWER I-CU-C (FTW)</b></p>			
ORIGINAL DRAWING: 05/2019	iuc-c-ftw.dgn	FED. RD. DIV. NO. 6	PROJECT NO.
DATE	REVISIONS	STATE	COUNTY
05/2019	REPLACES CI-2-08-BC (FTW)	TEXAS	FTW
11/2020	REVISE JOINT NOMENCLATURE	CONT.	SECT. JOB HIGHWAY NO.