

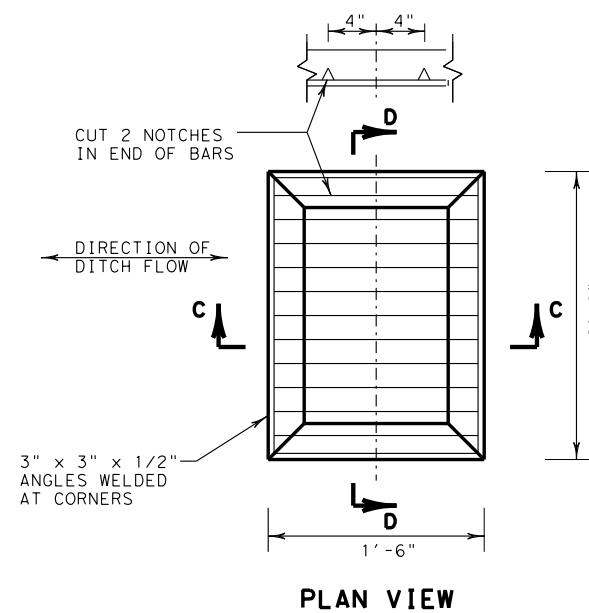
DISCLAIMER: THE USE OF THIS STANDARD IS GOVERNED BY THE "TEXAS ENGINEERING PRACTICE ACT". NO WARRANTY OF ANY KIND IS MADE BY TxDOT FOR ANY PURPOSE WHATSOEVER. TxDOT ASSUMES NO RESPONSIBILITY FOR THE CONVERSION OF THIS STANDARD TO SI UNITS. THE USER ASSUMES ALL LIABILITY FOR ANY ERRORS OR DAMAGES RESULTING FROM ITS USE.

http://www.dot.state.tx.us/ftw/spec/info/standard.htm
 7/6/2022 2:35:45 PM
 T:\Groups\00_KATY\PROJECTS\TXDOT\115 FTW Standards Revision\CADD\SWA11\Standard Revisions\To TxDOT\Final\115 FTW Standards Revision\CADD\SWA11\Standard Revisions\115 FTW Standards Revision.dgn

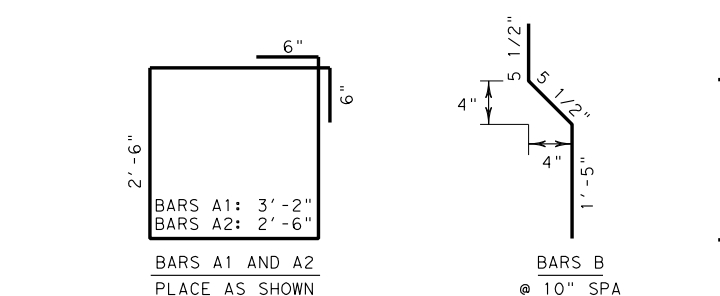
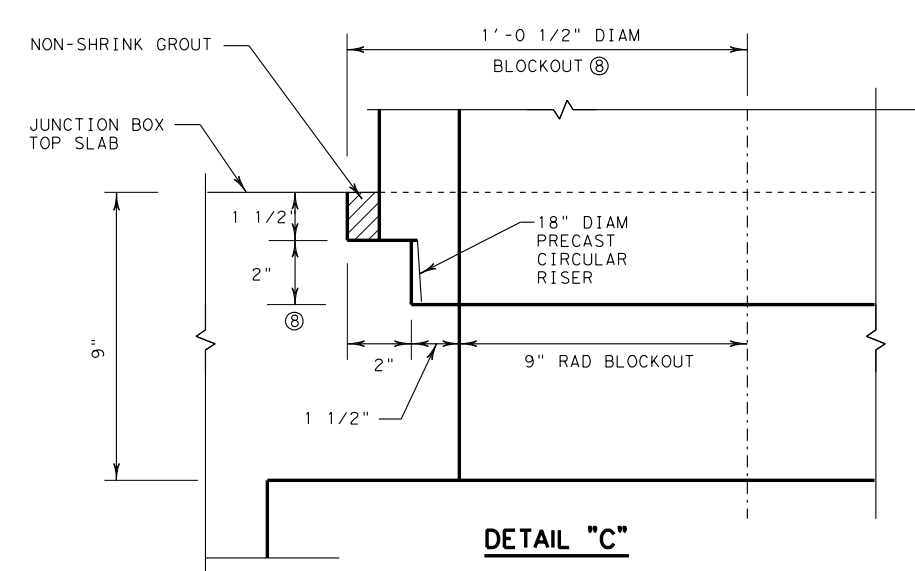
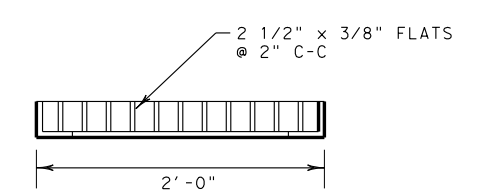
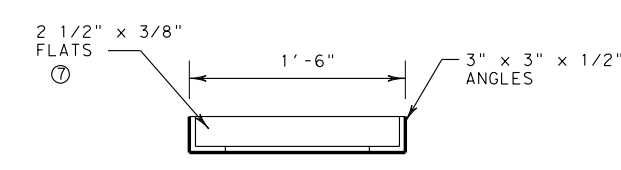
BILL OF REINFORCING STEEL

Bars A1			Bars A2			Bars B			Bars C			Bars D			Bars E			Bars F			Bars G			Bars H			Bars V1			Bars V2								
#5	No	Length	#5	No	Length	#5	No	Length	#5	No	Length	#5	No	Length	#5	No	Length	#5	No	Length	#5	No	Length	#5	No	Length	#5	No	Length	#5	No	Length	#5	No	Length			
	2	12.333		3	11.000		8	2.333		16	2.667		5	15.000		4	11.250		8	3.833		6	10.833		10	3.333		8	1.500		4	2.250						
		26			34			19			45			78			47			32			68			35			13			9						

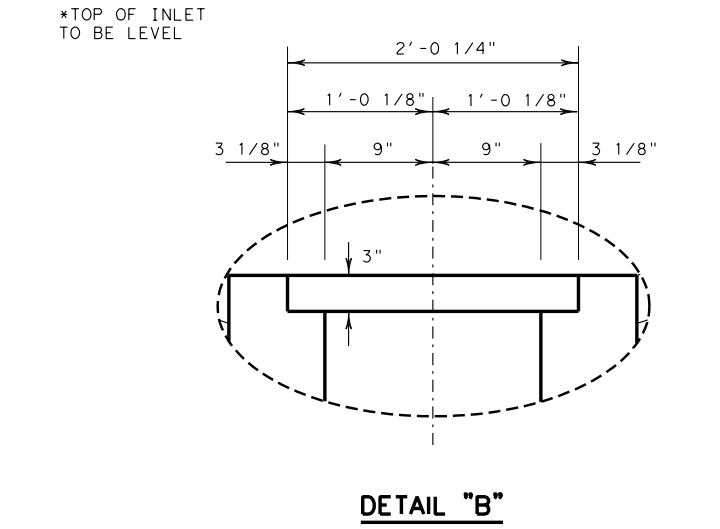
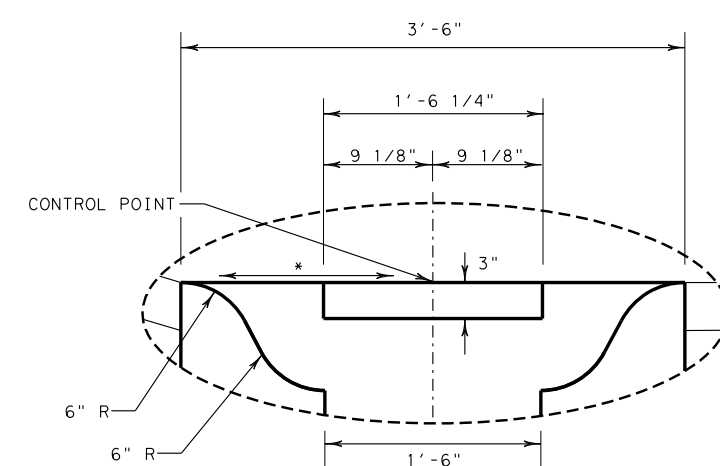
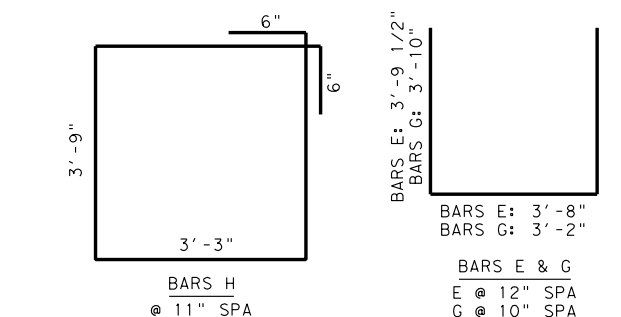
SUMMARY OF QUANTITIES	
Total Reinf Steel	Class "C" Concrete
Weight (Lb)	
281	2.18



- ① WELD FLATS TO LEGS OF ANGLES
- ② BLOCKOUT TO CONFORM TO TONGUE END OF RCP RISER.



BARS C: 2'-8"
 BARS F: 3'-10"
 BARS H: 3'-4"
 BARS C, F & H PLACE AS SHOWN
 BARS V1: 1'-6"
 BARS V2: 2'-3"
 BARS V1 AND V2 PLACE AS SHOWN



GENERAL NOTES

- DESIGNED FOR AASHTO LRFD HL 93 LOADING.
- INLETS ARE NOT TO BE USED IN SERIES, USING CONDUIT PARALLEL TO WALL. CONNECT TO TRUNK SYSTEM USING LATERAL UNDER WALL AS SHOWN.
- INLET EXCLUDING PIPE RISER, MAY BE EITHER CAST-IN-PLACE OR PRECAST.
- ALL CONCRETE FOR CAST-IN-PLACE STRUCTURES SHALL BE CLASS "C", WITH A MINIMUM COMPRESSIVE STRENGTH OF 3600 PSI. CONCRETE FOR PRECAST STRUCTURES SHALL BE CLASS "H", WITH A MINIMUM COMPRESSIVE STRENGTH OF 5000 PSI.
- CIRCULAR PRECAST RISER SHALL CONFORM TO ASTM C478. RISER WILL NOT BE PAID FOR DIRECTLY, BUT WILL BE CONSIDERED SUBSIDIARY TO THE COMPLETED INLET.
- ALL REINFORCING SHALL BE GRADE 60, #5 BARS, UNLESS OTHERWISE SHOWN.
- DIMENSIONS RELATING TO REINFORCING STEEL ARE TO THE CENTERS OF BARS.
- FIELD CUT OR BEND REINFORCING AS NECESSARY TO ACCOMMODATE STORM DRAIN PIPE OR RISER.
- GRATE SHALL BE WELDED STEEL, IN CONFORMANCE WITH ITEM 471.
- INLET IS NOT TO BE USED IN OR ADJACENT TO AREAS DESIGNATED FOR PEDESTRIAN OR BICYCLE ACCESS.
- FOR PIPE CONNECTIONS TO PRECAST STRUCTURES, SEE STANDARD DETAIL SHEET PBGC.
- ENSURE THAT TOP OF LOWER JUNCTION BOX AND BLOCKOUTS TO RECEIVE PRECAST RISER ARE LEVEL SO THAT RISER IS PLUMB AND VERTICAL.
- THE LOCATION OF INLET AS SHOWN IN THE PLANS REFERS TO THE CONTROL POINT SHOWN ON THIS SHEET.
- PAYMENT INCLUDES INLET BOX, PRECAST CIRCULAR RISER AND JUNCTION BOX.

SHEET 2 OF 2 SHEETS

<p>INLET DETAILS TYPE RWF (RETAINING WALL FLUME) I-RWF (FTW)</p>			
ORIGINAL DRAWING: 05/2019	irwf-ftw.dgn	FED. RD. DIV. NO. 6	PROJECT NO.
DATE 05/2019	REVISIONS	6	SHEET NO.
07/2022	NEW STANDARD	STATE TEXAS	DIST. NO. FTW
	REVISE REINFORCING STEEL; ADD GENERAL NOTE 2 - REQUIRE LATERAL TO TRUNK	COUNTY	
		CONT.	SECT. JOB HIGHWAY NO.