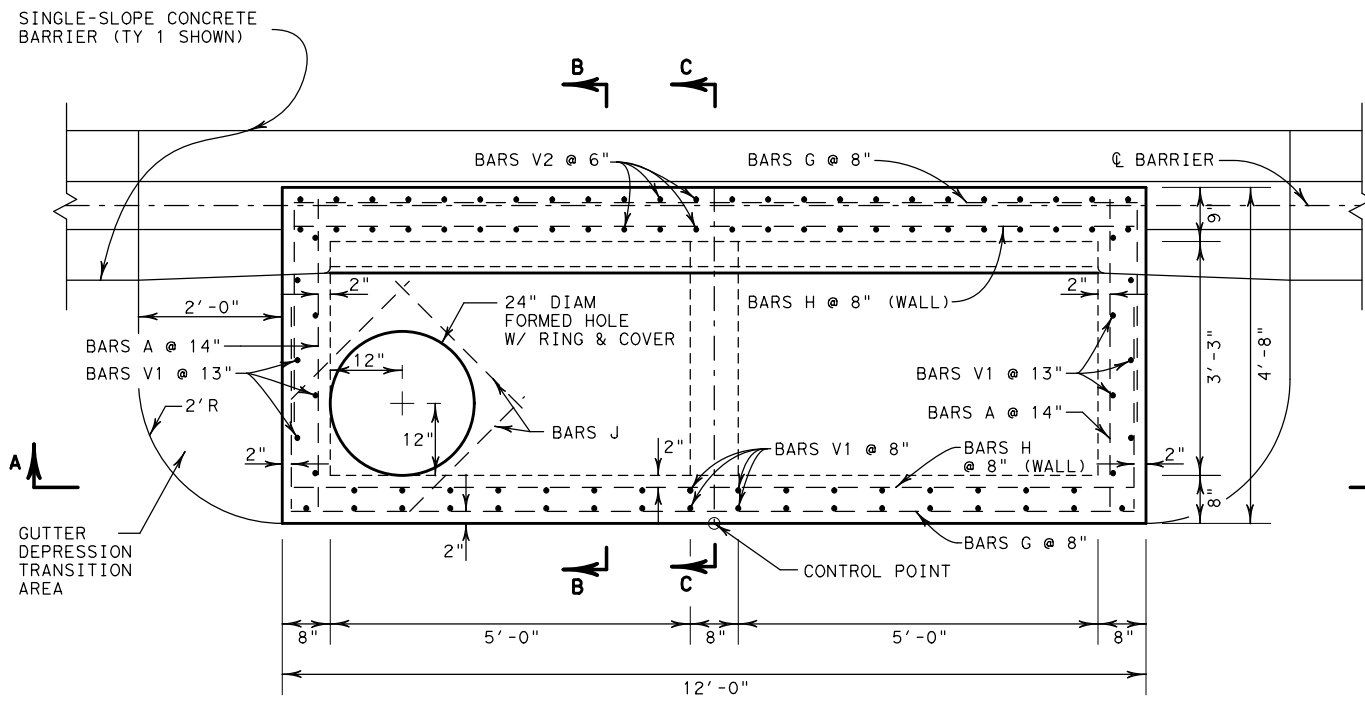
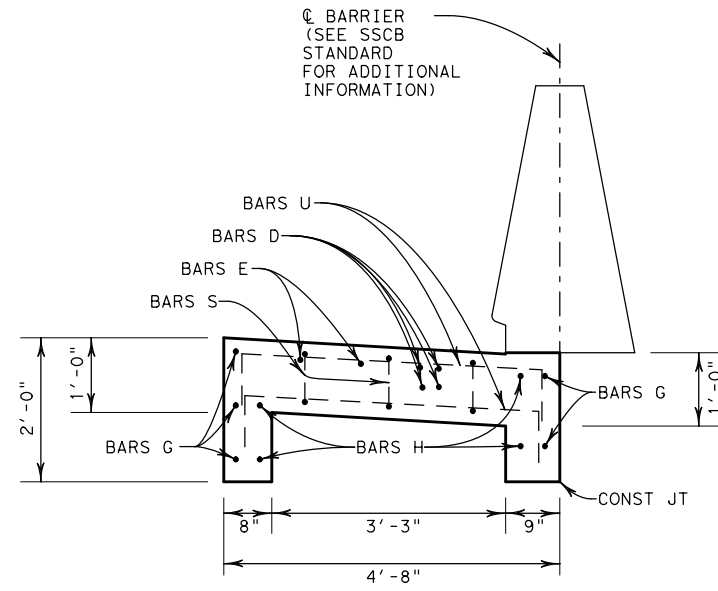


DISCLAIMER: THIS STANDARD IS COVERED BY THE "TEXAS ENGINEERING PRACTICE ACT". NO WARRANTY OF ANY KIND IS MADE BY TXDOT FOR ANY PURPOSE WHATSOEVER. TXDOT ASSUMES NO RESPONSIBILITY FOR THE CONVERSION OF THIS STANDARD TO OTHER FORMATS OR FOR INCORRECT RESULTS OR DAMAGES RESULTING FROM ITS USE.

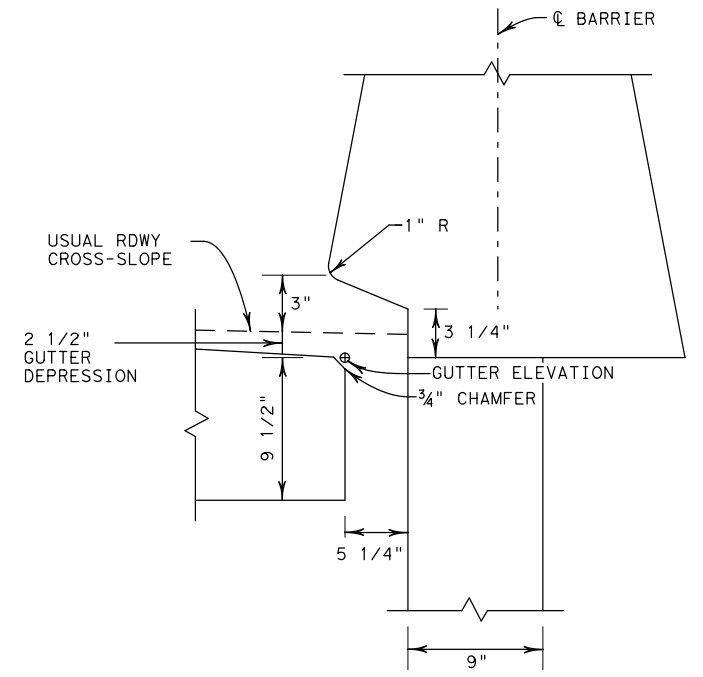
https://www.dot.state.tx.us/spec/info/standard.htm  
 11/6/2020 11:41:12 AM  
 P:\PROJECTS\TXDOT\16121\5 FTW Standards Revision\CADD\Modifications in Progress\I-SSB-FTW.dgn



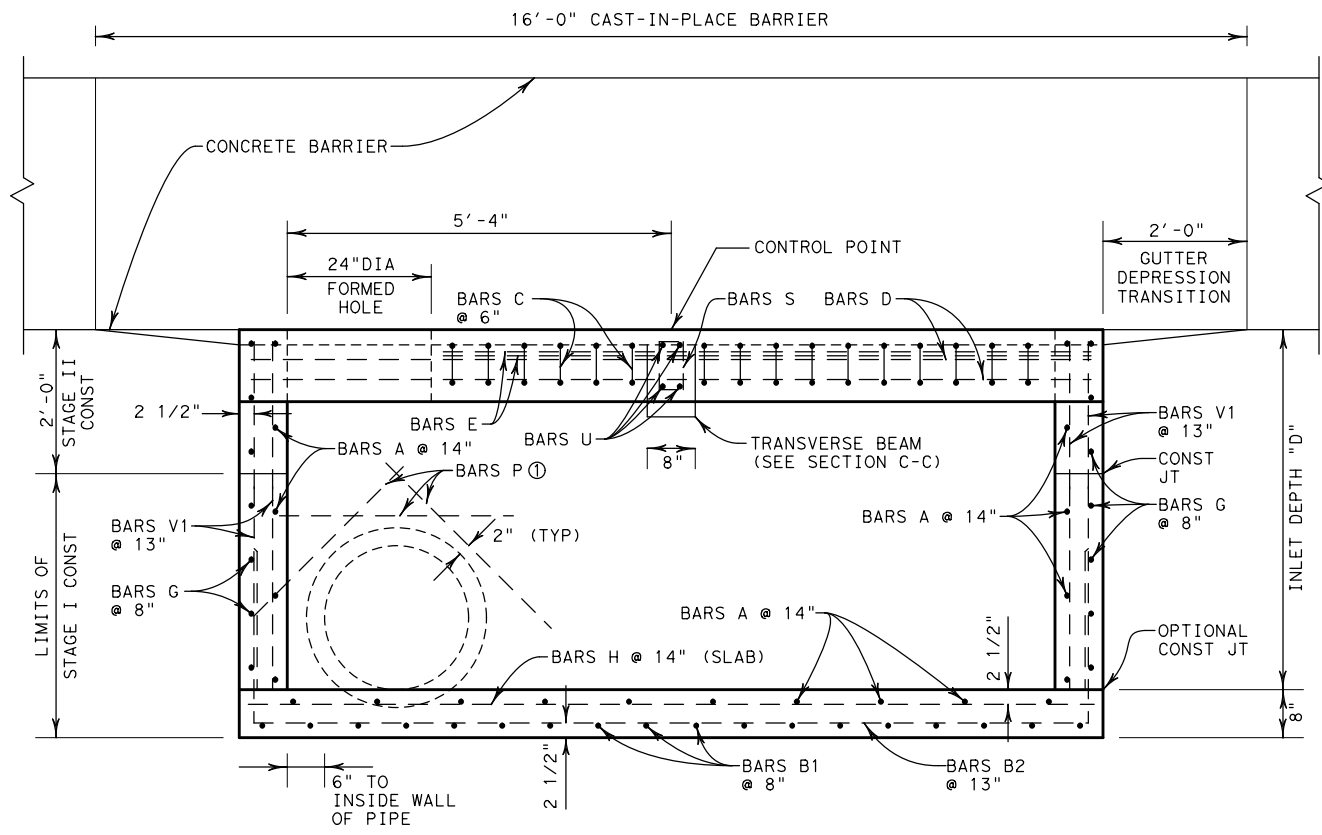
**PLAN VIEW**  
N. T. S.



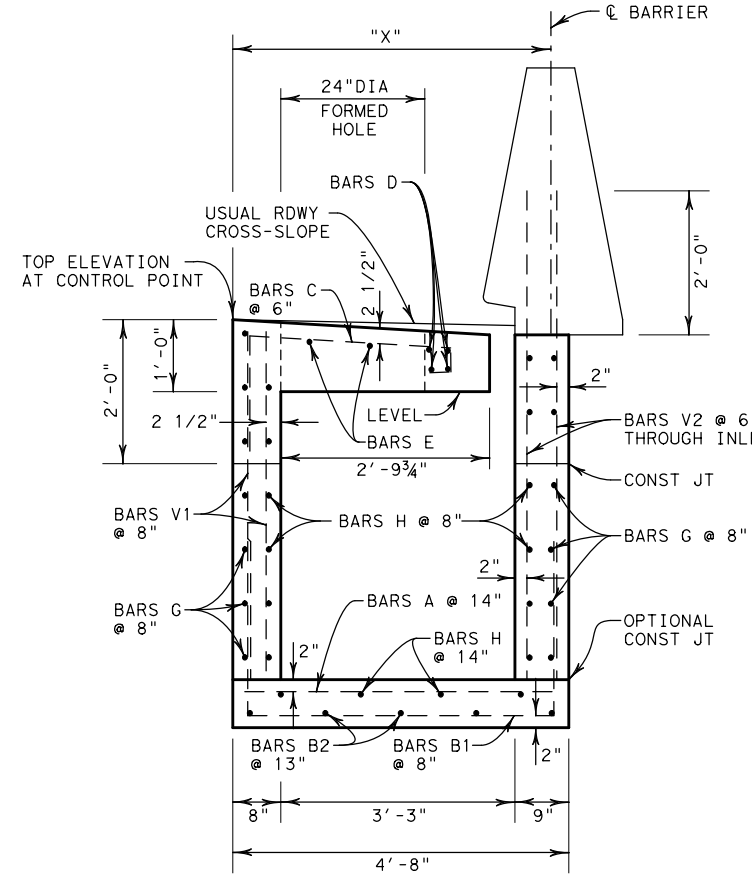
**SECTION C-C**  
(SHOWING STAGE II ONLY)  
N. T. S.



**THROAT DETAIL**  
N. T. S.



**SECTION A-A**  
N. T. S.



**SECTION B-B**  
N. T. S.

BARRIER HEIGHT	"X"
42"	4'-5"
48"	4'-6 1/8"
54"	4'-7 1/4"

NOTE: SEE SHEET 2 OF 2 FOR DETAILS OF REINFORCING STEEL, ESTIMATED QUANTITIES, AND GENERAL NOTES.

SHEET 1 OF 2 SHEETS

		<b>Fort Worth District Standard</b>	
<h2>BARRIER INLET FOR USE WITH SINGLE SLOPE MEDIAN BARRIER I-SSB (FTW)</h2>			
ORIGINAL DRAWING: 05/2019	iSSB-ftw.dgn	FED. RD. DIV. NO. 6	PROJECT NO.
DATE	REVISIONS		
05/2019	NEW STANDARD	STATE DIST. NO. TEXAS	COUNTY FTW
11/2020	REVISE JOINT NOMENCLATURE	CONT.	SECT. JOB HIGHWAY NO.

DISCLAIMER: THE USE OF THIS STANDARD IS GOVERNED BY THE "TEXAS ENGINEERING PRACTICE ACT". NO WARRANTY OF ANY KIND IS MADE BY TXDOT FOR ANY PURPOSE WHATSOEVER. TXDOT ASSUMES NO RESPONSIBILITY FOR THE CONVERSION OF THIS STANDARD TO OTHER FORMATS OR FOR INCORRECT RESULTS OR DAMAGES RESULTING FROM ITS USE.

http://www.dot.state.tx.us/ftw/specinfo/standard.htm  
 11/6/2020 11:41:34 AM  
 P:\PROJECTS\TXDOT\16121\5 FTW Standards Revision\CADD\Modifications in Progress\Issb-ftw.dgn

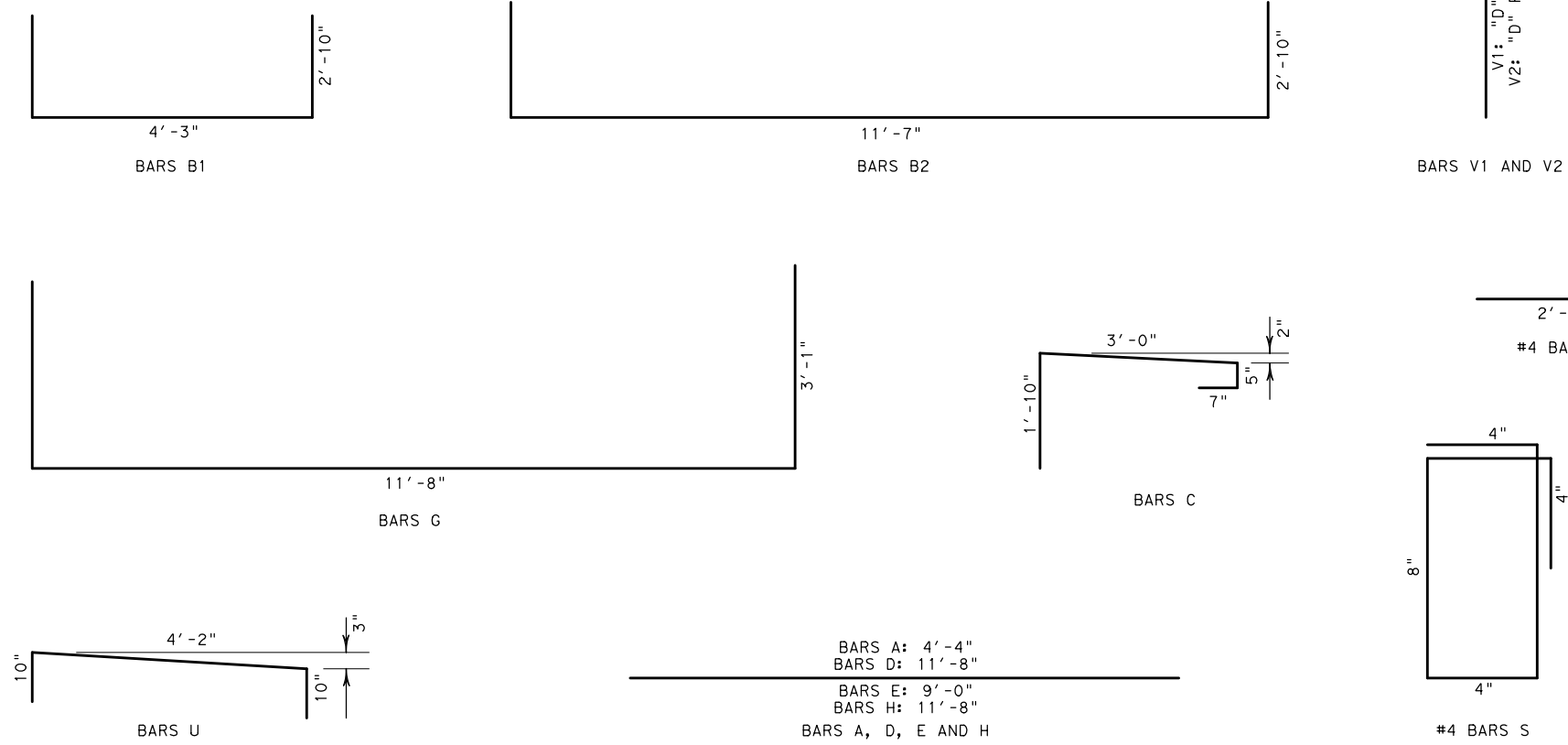
BILL OF REINFORCING STEEL																						
	#5 Bars A			#5 Bars B1			#5 Bars B2			#5 Bars C			#5 Bars D			#5 Bars E			#5 Bars G			
	No.	Length	Wt	No.	Length	Wt	No.	Length	Wt	No.	Length	Wt	No.	Length	Wt	No.	Length	Wt	No.	Length	Wt	
"D" = 6'	22	4.333	99	19	9.917	197	5	17.250	90	16	5.833	97	4	11.667	49	2	9.000	19	20	17.833	372	
"D" = 15'	38	4.333	172	19	9.917	197	5	17.250	90	16	5.833	97	4	11.667	49	2	9.000	19	46	17.833	856	
	#5 Bars H			#4 Bars J			#4 Bars S			#5 Bars U			#5 Bars V1			#5 Bars V2						
	No.	Length	Wt	No.	Length	Wt	No.	Length	Wt	No.	Length	Wt	No.	Length	Wt	No.	Length	Wt	No.	Length	Wt	
"D" = 6'	24	11.667	292	3	2.500	5	3	2.667	5	4	5.833	24	48	5.750	288	48	7.833	392				
"D" = 15'	50	11.667	608	3	2.500	5	3	2.667	5	4	5.833	24	48	14.750	738	48	16.833	843				

SUMMARY OF QUANTITIES FOR "D" = 6'	
TOTAL STEEL (LBS)	1929
CLASS "C" CONCRETE (CY)	14.7
ADDITIONAL QUANTITIES (PLF "D")	
REINFORCING STEEL (LBS)	202
CLASS "C" CONCRETE (CY)	0.74

NOTE:  
 QUANTITIES DO NOT INCLUDE #4 BARS P

**GENERAL NOTES**

- DESIGNED FOR AASHTO LRFD HL 93 LOADING.
- USE CLASS "C" CONCRETE FOR ALL CAST-IN-PLACE STRUCTURES; USE CLASS "H" CONCRETE FOR ALL PRECAST STRUCTURES; (5000 PSI MINIMUM DESIGN STRENGTH).
- USE GRADE 60 STEEL FOR ALL REINFORCING. ALL REINFORCING SHALL BE #5 BARS UNLESS OTHERWISE INDICATED.
- DIMENSIONS RELATING TO REINFORCING STEEL ARE TO THE CENTERS OF BARS.
- STAGE I MAY BE EITHER CAST-IN-PLACE OR PRECAST. FABRICATE PRECAST STRUCTURES USING REBAR AS SHOWN, WITH BARS V1 AND V2 TO BE INCLUDED WITH STAGE I. SPLICING OF BARS WILL NOT BE PERMITTED.
- STAGE II SHALL BE CAST-IN-PLACE.
- INSTALL RING AND COVER AT OUTFALL END OF INLET, UNLESS OTHERWISE DIRECTED. FABRICATE CAST IRON RING AND COVER CONFORMING TO ITEM 471. SEE MISCELLANEOUS DRAINAGE DETAILS FOR RING AND COVER DETAILS.
- FIELD CUT OR BEND BARS AS NECESSARY TO ACCOMMODATE STORM DRAIN PIPE.
- DEPTHS OTHER THAN THAT SHOWN MAY BE USED WHENEVER NECESSARY, UP TO A MAXIMUM DEPTH OF 15'. QUANTITIES FOR OTHER DEPTHS MAY BE DETERMINED BY INTERPOLATION.
- FOR PIPE AND BOX CONNECTION TO PRECAST INLETS, SEE STANDARD DETAIL SHEET PBGC.
- DO NOT COMMENCE WITH STAGE II CONSTRUCTION UNTIL CONCRETE PAVEMENT CONSTRUCTION IS COMPLETED AT THE INLET SITE.
- INSTALL A TEMPORARY WOOD COVER AFTER STAGE I IS COMPLETED, TO REMAIN IN PLACE UNTIL STAGE II CONSTRUCTION BEGINS.
- THE LOCATION OF INLET AS SHOWN IN THE PLAN REFERS TO THE CONTROL POINT AS SHOWN ON SHEET 1 OF 2.
- PLACE A SEALED 1/2" ISOLATION JOINT ALONG ALL VERTICAL FACES ABUTTING CONCRETE PAVEMENT. USE CLASS 5 OR 8 JOINT SEALANT SHALL BE USED TO SEAL THE JOINT. SEE JS (FTW) FOR ADDITIONAL INFORMATION.
- PAY FOR CONCRETE BARRIER IN ACCORDANCE WITH ITEM 514 "PERMANENT TRAFFIC BARRIER". SEE BARRIER DETAILS FOR ADDITIONAL INFORMATION.



SHEET 2 OF 2 SHEETS

<h2>BARRIER INLET          FOR USE WITH SINGLE SLOPE          MEDIAN BARRIER          I-SSB (FTW)</h2>			
ORIGINAL DRAWING: 05/2019	issb-ftw.dgn	FED. RD. DIV. NO. 6	PROJECT NO.
DATE	REVISIONS	STATE	COUNTY
05/2019	NEW STANDARD	TEXAS	FTW
11/2020	REVISE JOINT NOMENCLATURE	CONT.	SECT. JOB HIGHWAY NO.