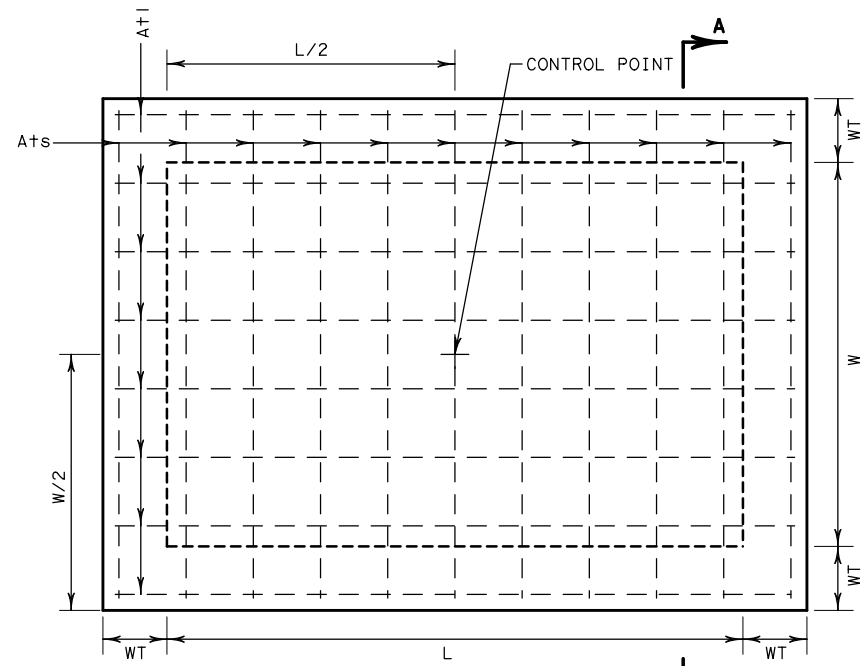
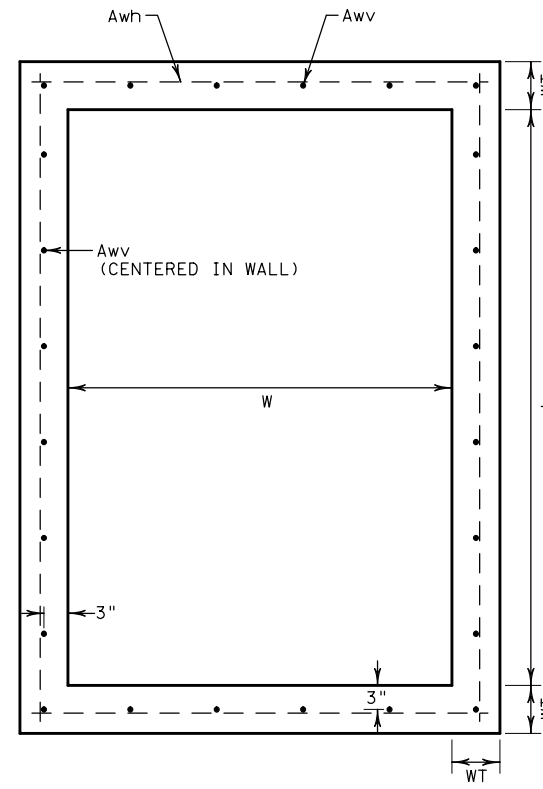


DISCLAIMER: THE USE OF THIS STANDARD IS GOVERNED BY THE "TEXAS ENGINEERING PRACTICE ACT". NO WARRANTY OF ANY KIND IS MADE BY TXDOT FOR ANY PURPOSE WHATSOEVER. TXDOT ASSUMES NO RESPONSIBILITY FOR THE CONVERSION OF THIS STANDARD TO OTHER FORMATS OR FOR INCORRECT RESULTS OR DAMAGES RESULTING FROM ITS USE.

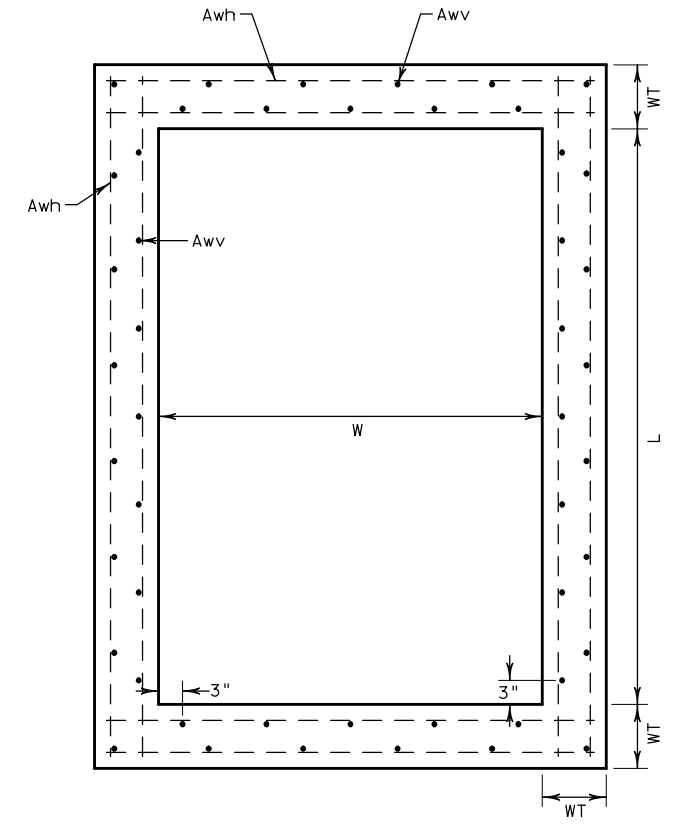
http://www.dot.state.tx.us/ftw/spec/info/standard.htm
 7/18/2022 11:24:08 AM
 SPATHS
 T:\Groups\00_KATY\PROJECTS\TXDOT\16121\5 FTW Standards Revision\CADD\SWA1\Standard Revisions\jb-ftw.dgn



PLAN VIEW
 SHOWING TOP SLAB REINFORCEMENT
 N. T. S.

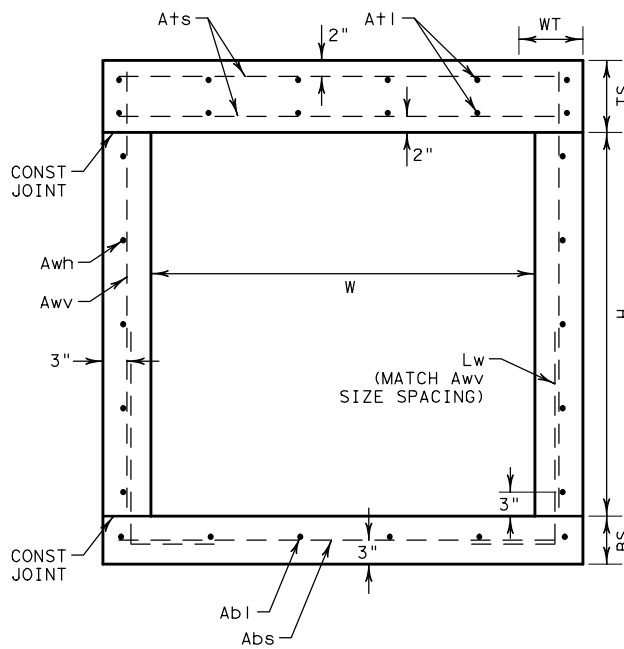


SINGLE LAYER REINFORCING
 FOR WT = 6"

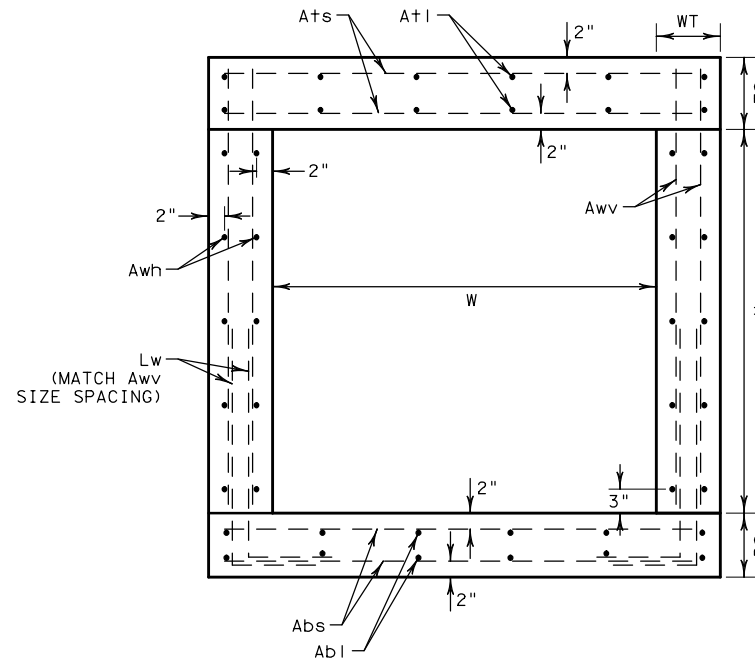


PLAN VIEW
 SHOWING WALL REINFORCEMENT
 N. T. S.

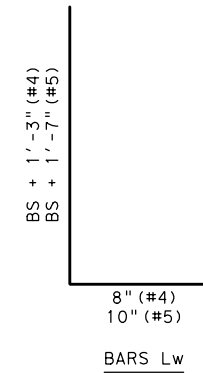
DOUBLE LAYER REINFORCING
 FOR WT \geq 8"



SINGLE LAYER WALL REINFORCING
 FOR BS = 6"
 FOR WT = 6"



DOUBLE LAYER WALL REINFORCING
 FOR BS \geq 8"
 FOR WT \geq 8"



MAX CONDUIT SIZE		
"L" Or "W"	PIPE DIAM. (IN)	BOX SPAN (FT)
3'	24	-
4'	36	3
5'	42	3
6'	54	4
7'	66	5
8'	78	6

GENERAL NOTES

- DESIGNED FOR AASHTO LRFD HL 93 LOADING.
- STRUCTURES MAY BE EITHER CAST-IN-PLACE OR PRECAST. FOR PRECAST STRUCTURES, SUBMIT SEALED ENGINEERING CALCULATIONS AND DRAWINGS FOR APPROVAL PRIOR TO FABRICATION.
- USE CLASS "C" CONCRETE FOR CAST-IN-PLACE STRUCTURES; USE CLASS "H" CONCRETE (MINIMUM 5000 PSI DESIGN STRENGTH) FOR PRECAST STRUCTURES.
- USE GRADE 60 STEEL FOR ALL REINFORCING.
- DIMENSIONS RELATING TO REINFORCING STEEL ARE TO THE CENTERS OF BARS.
- FIELD CUT AND BEND BARS AS NECESSARY TO ACCOMMODATE STORM DRAIN PIPE.
- FOR PIPE OR BOX CONNECTIONS TO PRECAST STRUCTURES, SEE STANDARD PBGC.
- THE LOCATION OF JUNCTION BOX AS SHOWN IN THE PLANS REFERS TO THE CONTROL POINT SHOWN HEREON. POSITION JUNCTION BOX TO ALIGN WITH STORM DRAINS, ROADWAYS AND OTHER FEATURES, AS DIRECTED.

SHEET 1 OF 2 SHEETS

		Fort Worth District Standard	
<h2>JUNCTION BOX WITHOUT RISER</h2> <h3>JB (FTW)</h3>			
ORIGINAL DRAWING: 05/2019	jb-ftw.dgn	FED. DIV. NO. 6	PROJECT NO.
DATE	REVISIONS		SHEET NO.
05/2019	NEW STANDARD	STATE DIST. NO. TEXAS	COUNTY FTW
07/2022	ADD MAX CONDUIT SIZE TABLE; REVISE REINFORCING TABLE.	CONT.	SECT. JOB HIGHWAY NO.

SECTION A-A
 N. T. S.

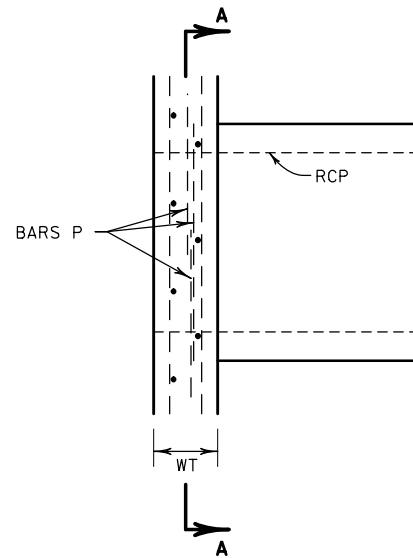
DISCLAIMER : THIS STANDARD IS GOVERNED BY THE "TEXAS ENGINEERING PRACTICE ACT". NO WARRANTY OF ANY KIND IS MADE BY TXDOT FOR ANY PURPOSE WHATSOEVER. TXDOT ASSUMES NO RESPONSIBILITY FOR THE CONVERSION OF THIS STANDARD TO OTHER FORMATS OR FOR INCORRECT RESULTS OR DAMAGES RESULTING FROM ITS USE.

https://www.dot.state.tx.us/ftw/spec/info/standard.htm
 7/18/2022 11:24:08 AM
 T:\Groups\00_KATY\PROJECTS\TXDOT\16121\5 FTW Standards Revisions\jb-ftw.dgn

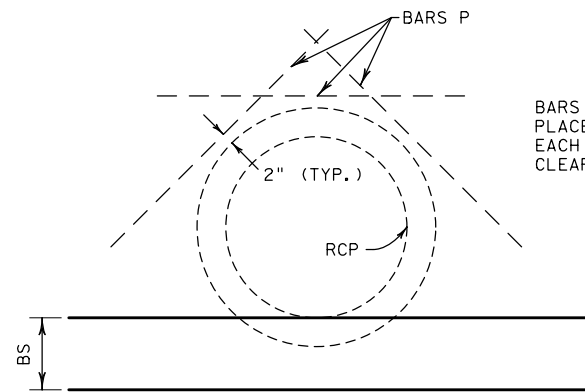
BILL OF REINFORCING STEEL

SIZE			MAX DEPTH = 25' TO TOP OF BASE SLAB									MAX DEPTH = 15' TO TOP OF BASE SLAB								
			BASE SLAB			WALL			TOP SLAB			BASE SLAB			WALL			TOP SLAB		
L	W	H	BS*	Abs	Abl	WT*	Awh	Aww	TS*	Ats	Atl	BS*	Abs	Abl	WT*	Awh	Aww	TS*	Ats	Atl
8'	8' or 7'	8' or 7'	9"	#5 AT 8"	#5 AT 8"	10"	#5 AT 8"	#5 AT 8"	12"	#5 AT 9"	#5 AT 9"	9"	#5 AT 10"	#5 AT 10"	10"	#5 AT 10"	#5 AT 10"	12"	#5 AT 12"	#5 AT 12"
8'	<=6'	8' or 7'	9"	#5 AT 8"	#5 AT 12"	9"	#5 AT 8"	#5 AT 8"	12"	#5 AT 10"	#5 AT 12"	9"	#5 AT 10"	#5 AT 12"	9"	#5 AT 10"	#5 AT 10"	12"	#5 AT 12"	#5 AT 12"
8'	8' or 7'	<=6'	9"	#5 AT 8"	#5 AT 8"	9"	#5 AT 8"	#5 AT 8"	12"	#5 AT 9"	#5 AT 9"	9"	#5 AT 10"	#5 AT 10"	9"	#5 AT 10"	#5 AT 10"	12"	#5 AT 12"	#5 AT 12"
8'	<=6'	<=6'	8"	#5 AT 8"	#5 AT 12"	8"	#5 AT 8"	#5 AT 8"	12"	#5 AT 10"	#5 AT 12"	8"	#5 AT 10"	#5 AT 12"	8"	#5 AT 10"	#5 AT 10"	12"	#5 AT 12"	#5 AT 12"
7'	7' or 6'	7' or 6'	9"	#5 AT 10"	#5 AT 10"	9"	#5 AT 9"	#5 AT 9"	10"	#5 AT 8"	#5 AT 8"	9"	#4 AT 10"	#4 AT 10"	9"	#4 AT 9"	#4 AT 9"	10"	#5 AT 10"	#5 AT 10"
7'	<=5'	7' or 6'	8"	#5 AT 9"	#5 AT 12"	8"	#5 AT 9"	#5 AT 9"	10"	#5 AT 8"	#5 AT 12"	8"	#4 AT 9"	#4 AT 12"	8"	#4 AT 9"	#4 AT 9"	10"	#5 AT 10"	#5 AT 12"
7'	7' or 6'	<=5'	8"	#5 AT 9"	#5 AT 9"	8"	#5 AT 9"	#5 AT 9"	10"	#5 AT 8"	#5 AT 8"	8"	#4 AT 9"	#4 AT 9"	8"	#4 AT 9"	#4 AT 9"	10"	#5 AT 10"	#5 AT 10"
7'	<=5'	<=5'	8"	#5 AT 9"	#5 AT 12"	8"	#5 AT 9"	#5 AT 9"	10"	#5 AT 8"	#5 AT 12"	8"	#4 AT 9"	#4 AT 12"	8"	#4 AT 9"	#4 AT 9"	10"	#5 AT 10"	#5 AT 12"
6'	6' or 5'	6' or 5'	8"	#5 AT 10"	#5 AT 10"	8"	#5 AT 9"	#5 AT 9"	9"	#5 AT 8"	#5 AT 8"	8"	#4 AT 10"	#4 AT 10"	8"	#4 AT 8"	#4 AT 8"	9"	#5 AT 9"	#5 AT 9"
6'	<=4'	6' or 5'	8"	#5 AT 10"	#5 AT 12"	8"	#5 AT 10"	#5 AT 10"	9"	#5 AT 9"	#5 AT 12"	8"	#4 AT 10"	#4 AT 10"	8"	#4 AT 10"	#4 AT 10"	9"	#5 AT 10"	#5 AT 12"
6'	6' or 5'	<=4'	8"	#5 AT 10"	#5 AT 10"	8"	#5 AT 10"	#5 AT 10"	9"	#5 AT 8"	#5 AT 8"	8"	#4 AT 10"	#4 AT 10"	8"	#4 AT 10"	#4 AT 10"	9"	#5 AT 9"	#5 AT 9"
6'	<=4'	<=4'	8"	#5 AT 10"	#5 AT 12"	8"	#5 AT 12"	#5 AT 12"	9"	#5 AT 9"	#5 AT 12"	8"	#4 AT 10"	#4 AT 12"	8"	#4 AT 12"	#4 AT 12"	9"	#5 AT 10"	#5 AT 12"
5'	5' or 4'	<=5'	6"	#5 AT 7"	#5 AT 7"	6"	#5 AT 7"	#5 AT 7"	9"	#5 AT 9"	#5 AT 9"	6"	#4 AT 7"	#4 AT 7"	6"	#4 AT 7"	#4 AT 7"	9"	#5 AT 10"	#5 AT 10"
5'	3'	<=5'	6"	#5 AT 9"	#5 AT 12"	6"	#5 AT 9"	#5 AT 9"	9"	#4 AT 10"	#4 AT 12"	6"	#4 AT 9"	#4 AT 12"	6"	#4 AT 9"	#4 AT 9"	9"	#4 AT 12"	#4 AT 12"
4'	4'	4'	6"	#4 AT 9"	#4 AT 9"	6"	#4 AT 10"	#4 AT 10"	9"	#4 AT 10"	#4 AT 10"	6"	#4 AT 12"	#4 AT 12"	6"	#4 AT 12"	#4 AT 12"	9"	#4 AT 12"	#4 AT 12"
4'	3'	4' or 3'	6"	#4 AT 10"	#4 AT 12"	6"	#4 AT 10"	#4 AT 10"	9"	#4 AT 12"	#4 AT 12"	6"	#4 AT 12"	#4 AT 12"	6"	#4 AT 12"	#4 AT 12"	9"	#4 AT 12"	#4 AT 12"
3'	3'	3'	6"	#4 AT 12"	#4 AT 12"	6"	#4 AT 12"	#4 AT 12"	9"	#4 AT 12"	#4 AT 12"	6"	#4 AT 12"	#4 AT 12"	6"	#4 AT 12"	#4 AT 12"	9"	#4 AT 12"	#4 AT 12"

*PLACE TWO LAYERS OF REINFORCING MAT IN CONCRETE THICKNESSES EQUAL OR GREATER THAN 8". PLACE ONE LAYER OF REINFORCING MAT IN 6" THICK WALL/SLAB.



PLAN VIEW



SHOWING ONLY BARS P FOR CLARITY

SECTION A-A
N. T. S.

SUPPLEMENTAL REINFORCEMENT RCP CONNECTION (CAST-IN-PLACE ONLY)

MAX CONDUIT SIZE		
"L" Or "W"	PIPE DIAM. (IN)	BOX SPAN (FT)
3'	24	-
4'	36	3
5'	42	3
6'	54	4
7'	66	5
8'	78	6

		Fort Worth District Standard	
JUNCTION BOX WITHOUT RISER JB (FTW)			
ORIGINAL DRAWING: 05/2019	jb-ftw.dgn	FED. DIV. NO. 6	PROJECT NO.
DATE	REVISIONS	STATE	COUNTY
05/2019	NEW STANDARD	TEXAS	FTW
07/2022	ADD MAX CONDUIT SIZE TABLE; REVISE REINFORCING TABLE.	CONT.	SECT. JOB HIGHWAY NO.