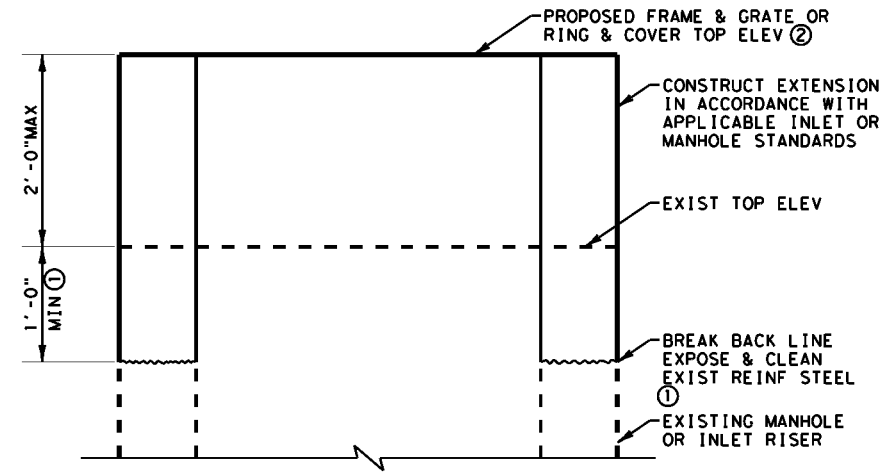


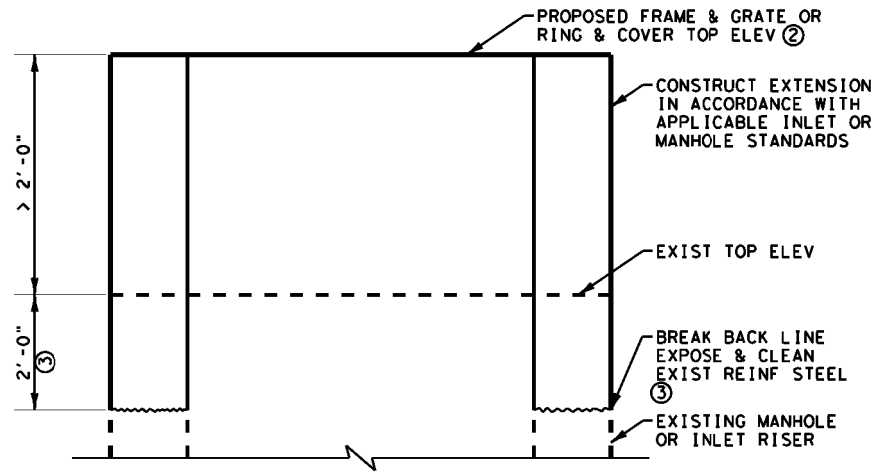
DISCLAIMER: THE USE OF THIS STANDARD IS COVERED BY THE "TEXAS ENGINEERING PRACTICE ACT". NO WARRANTY OF ANY KIND IS MADE BY TxDOT FOR ANY PURPOSE WHATSOEVER. TxDOT ASSUMES NO RESPONSIBILITY FOR THE CONVERSION OF THIS STANDARD TO OTHER FORMATS OR FOR INCORRECT RESULTS OR DAMAGES RESULTING FROM ITS USE.

https://www.dot.state.tx.us/ftw/specinfo/standard.htm
 9/4/2019 5:05:49 PM
 I:\CENTDES\NDistrict\Hydraulics\Inlet Standards Update\100% website\drainage\miac-ftw.dgn



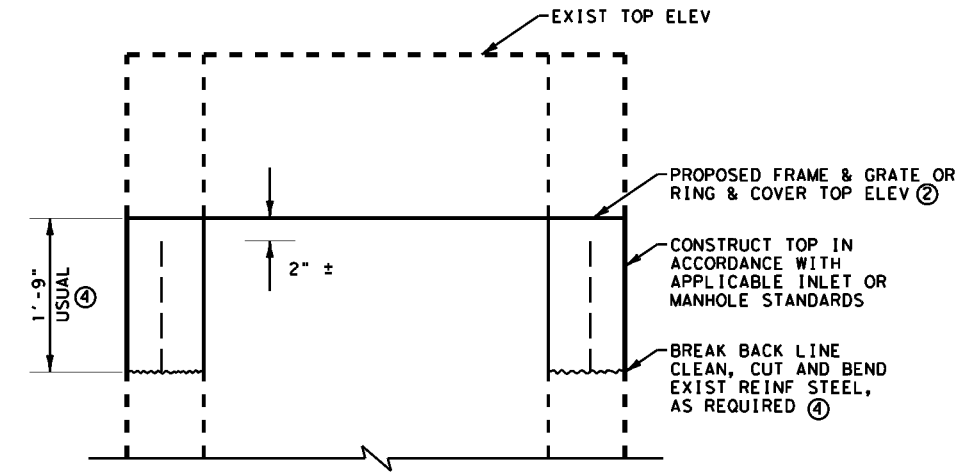
VERTICAL EXTENSIONS

$\le 2'-0''$



VERTICAL EXTENSIONS

$> 2'-0''$

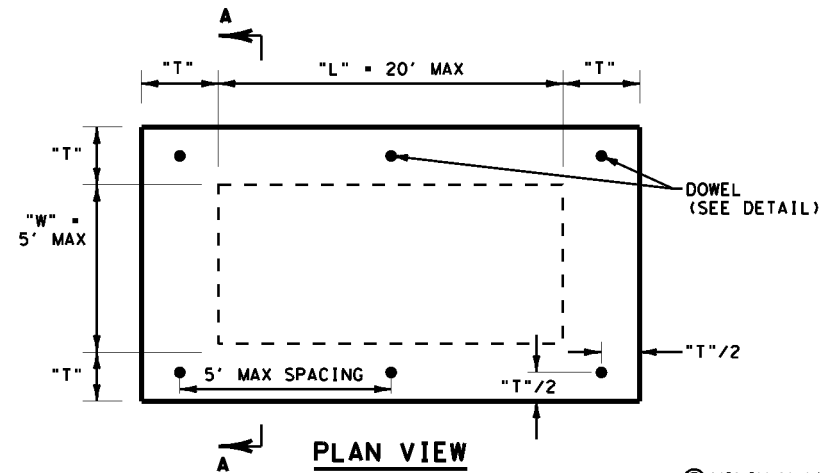


VERTICAL REDUCTION

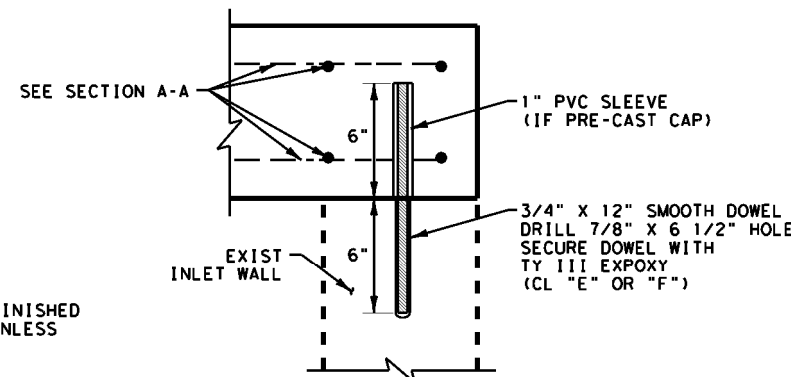
MANHOLE AND INLET ADJUSTMENT DETAILS

N. T. S.

- ① BREAK BACK 1'-0" MIN OR AS REQUIRED TO PROVIDE 10" MIN LAP IN VERTICAL REINFORCING
- ② EXISTING FRAME & GRATE OR RING & COVER MAY BE RE-USED, IF APPROVED
- ③ BREAK BACK 2'-0" MIN OR AS REQUIRED TO PROVIDE 1'-10" MIN LAP IN VERTICAL REINFORCING
- ④ BREAK BACK TO DEPTH NECESSARY TO CONSTRUCT TOP OF APPLICABLE INLET OR MANHOLE AND PROVIDE 10" MIN. LAP IN VERTICAL REINFORCING

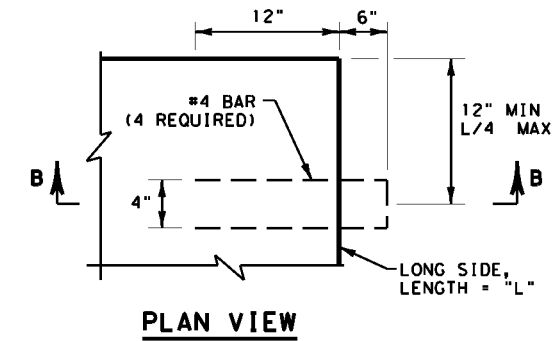


PLAN VIEW

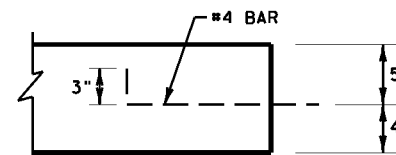


DOWEL DETAIL

MIN 4 EA
 PLACED AT CORNERS OF INLET OR MANHOLE FOR CURB INLETS, PLACE AT CORNERS AND AT 5' +/- C-C ALONG WALLS



PLAN VIEW



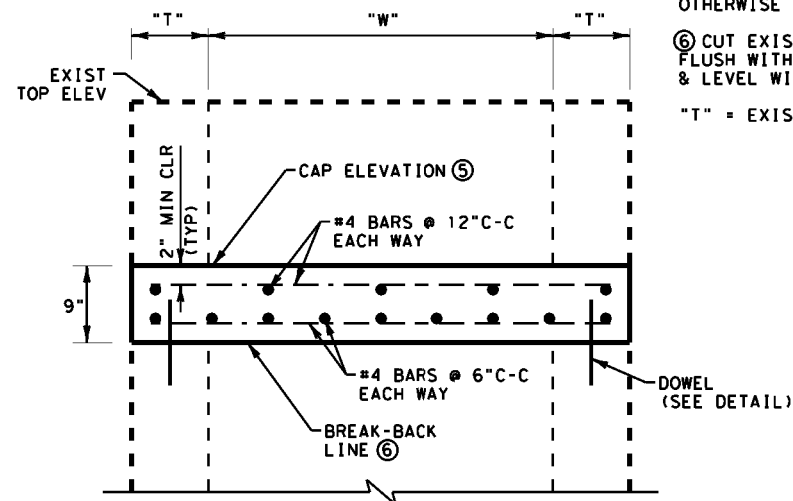
SECTION B-B

LIFTING LOOPS
 USE WITH PRE-CAST CAP

GENERAL NOTES

1. USE CLASS "C" CONCRETE FOR CAST-IN-PLACE CAPS. USE CLASS "H" CONCRETE (MINIMUM DESIGN STRENGTH 5000 PSI) FOR PRECAST CAPS.
2. USE GRADE 60 STEEL FOR ALL REINFORCING.
3. MANHOLE AND INLET CAPS MAY BE CAST-IN-PLACE OR PRECAST. IF CAST-IN-PLACE, PERMANENT METAL DECK FORMS (PMDF) MAY BE USED. THE METHOD OF SUPPORTING PMDF TO BE APPROVED IN WRITING.

- ⑤ MINIMUM 1' BELOW FINISHED GRADE OR SUBGRADE, UNLESS OTHERWISE APPROVED.
 - ⑥ CUT EXISTING STEEL FLUSH WITH CONCRETE & LEVEL WITH GROUT.
- "T" = EXIST WALL THICKNESS



SECTION A-A

MANHOLE AND INLET CAP DETAILS

N. T. S.

		Fort Worth District Standard	
<h2>MANHOLE AND INLET ADJUSTMENT AND CAP DETAILS</h2> <h3>MI-AC (FTW)</h3>			
ORIGINAL DRAWING: 05/2019	miac-ftw.dgn	PROJECT NO.	SHEET NO.
DATE	REVISIONS	STATE	COUNTY
05/2019	REPLACES MI-AC (FTW)	TEXAS	FTW
		CONT.	HIGHWAY NO.