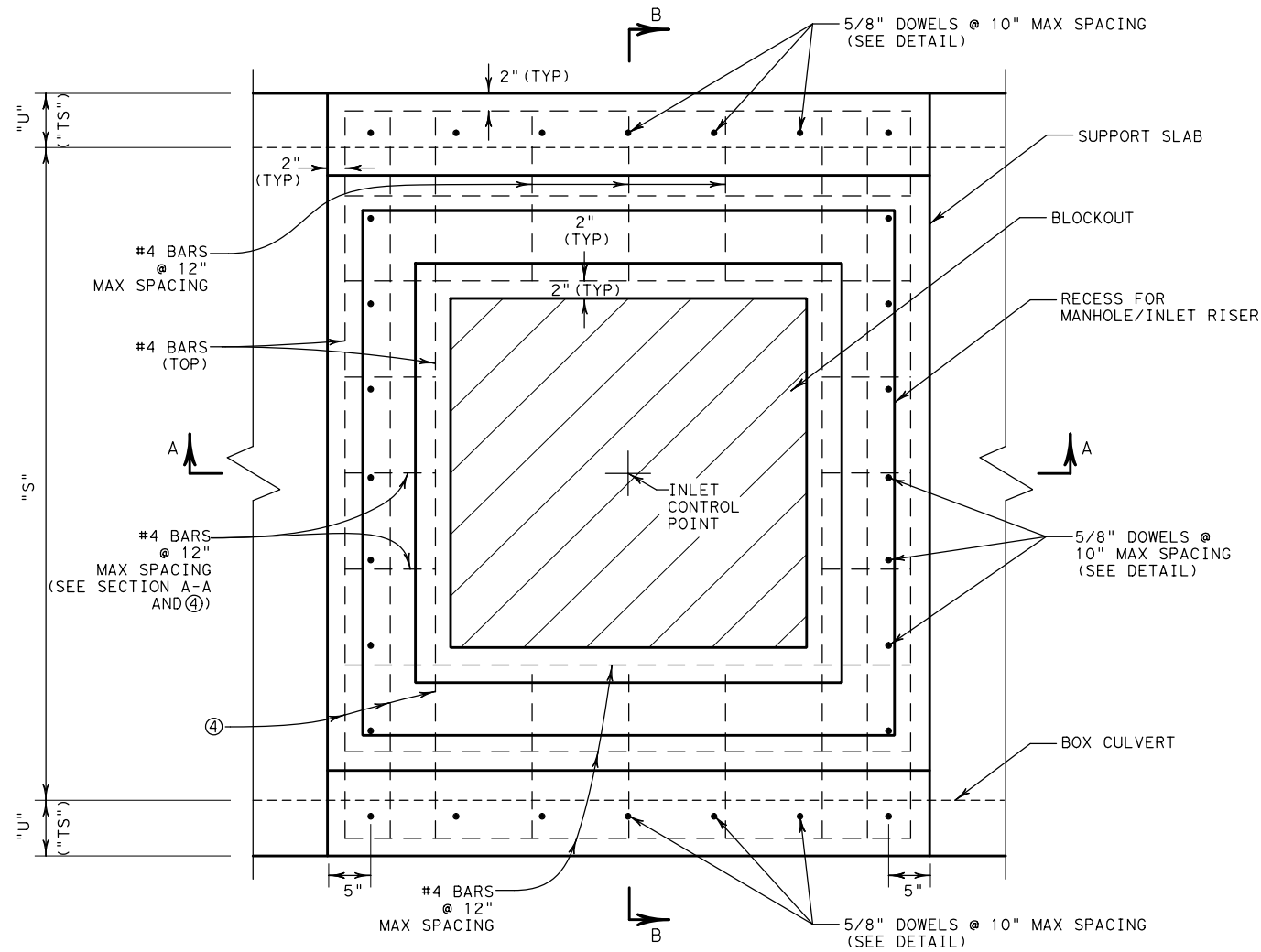
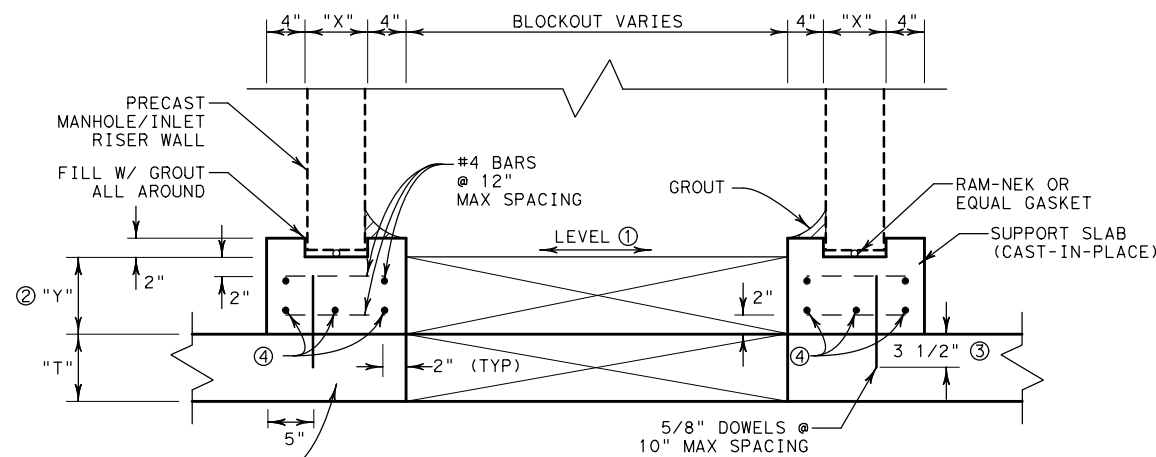


DISCLAIMER: THE USE OF THIS STANDARD IS COVERED BY THE "TEXAS ENGINEERING PRACTICE ACT". NO WARRANTY OF ANY KIND IS MADE BY TXDOT FOR ANY PURPOSE WHATSOEVER. TXDOT ASSUMES NO RESPONSIBILITY FOR THE CONVERSION OF THIS STANDARD TO OTHER FORMATS OR FOR INCORRECT RESULTS OR DAMAGES RESULTING FROM ITS USE.

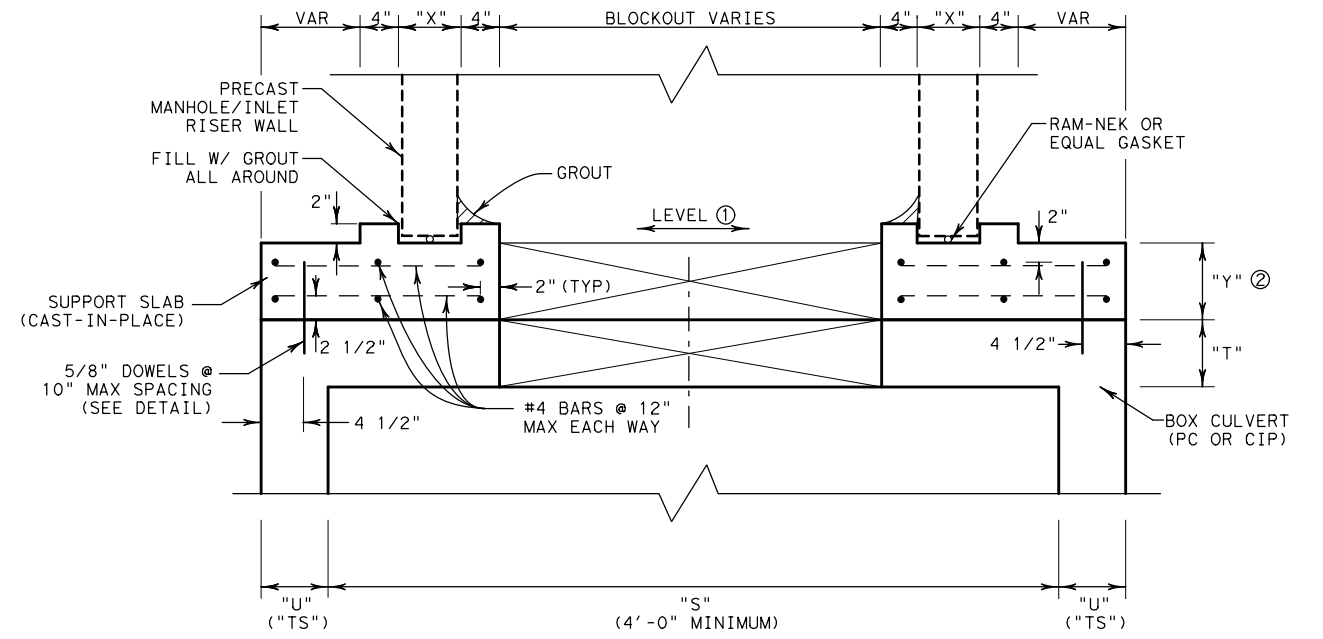
https://www.dot.state.tx.us/ftw/spec/info/standard.htm
 10/10/2022 10:43:01 AM
 T:\GROUPS\00_KATY\PROJECTS\TXDOT16121\5 FTW Standards Revision\CADD\SWA1\micbc-ftw.dgn



PLAN VIEW
N. T. S.



SECTION A-A
N. T. S.



SECTION B-B
N. T. S.

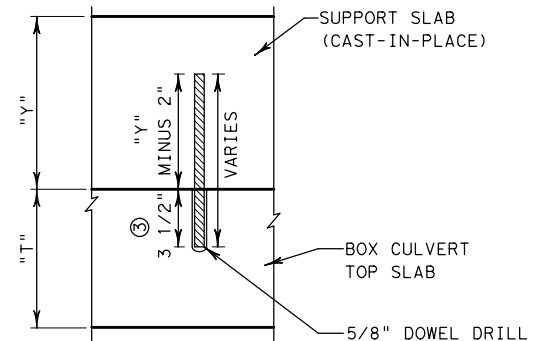
NOTE:

- "S" REFERS TO BOX CULVERT SPAN (4' MINIMUM)
- "T" REFERS TO BOX CULVERT TOP SLAB THICKNESS
- "U" AND "TS" REFERS TO BOX CULVERT WALL THICKNESS
- "X" = RISER WALL THICKNESS + 1/2"
- "Y" REFERS TO SUPPORT SLAB THICKNESS

- ① GRADE SUPPORT SLAB AND RECESS TO BE LEVEL, TO ENSURE THAT MANHOLE/INLET RISER IS PLUMB AND VERTICAL.
- ② FOR "S" <= 8', "Y" = 8" MIN
 FOR 8' < "S" <= 10', "Y" = 10" MIN
 FOR "S" > 10', "Y" = 12" MIN
- ③ FOR "T" LESS THAN 6", REDUCE TO 3".
- ④ 3 - #7 BARS @ 2 EQUAL SPACES. (BOTTOM MAT)

GENERAL NOTES

1. SUPPORT SLAB TO BE CAST-IN-PLACE.
2. USE CLASS "C" CONCRETE FOR ALL SUPPORT SLABS.
3. USE GRADE 60 STEEL FOR ALL REINFORCING.
4. CUT OR FORM BLOCKOUT IN TOP SLAB OF BOX CULVERT AS DIRECTED. CUT REINFORCING STEEL FLUSH WITH WALLS OF BLOCKOUT AND GROUT SMOOTH.
5. FOR PIPE RISER NOT CENTERED ON BOX CULVERT, ADJUST LENGTHS OF BARS P ON SHORT SIDE AS DIRECTED, TO PROVIDE MINIMUM 2" CLEAR COVER.
6. ADJUST LENGTHS OF REINFORCING BARS AS DIRECTED, TO ACCOMMODATE CULVERT SKEW.
7. BLOCKOUTS FOR CURB INLETS TO BE LOCATED AT DOWNSTREAM OR OUTFALL END OF INLET.
8. SEE CULVERT STANDARDS FOR DIMENSIONS OF BOX CULVERTS.
9. SEE CULVERT AND DRAINAGE LAYOUTS FOR LOCATION, TYPE, SIZE AND ORIENTATION OF INLET AND MANHOLE STRUCTURES.
10. MANHOLE, INLET AND RISER CONNECTIONS TO BOX CULVERTS WILL NOT BE PAID FOR DIRECTLY, BUT WILL BE SUBSIDIARY TO ITEM 462 AND ITEM 465.



DOWEL DETAIL
N. T. S.

PRECAST MANHOLE & INLET RISER CONNECTION

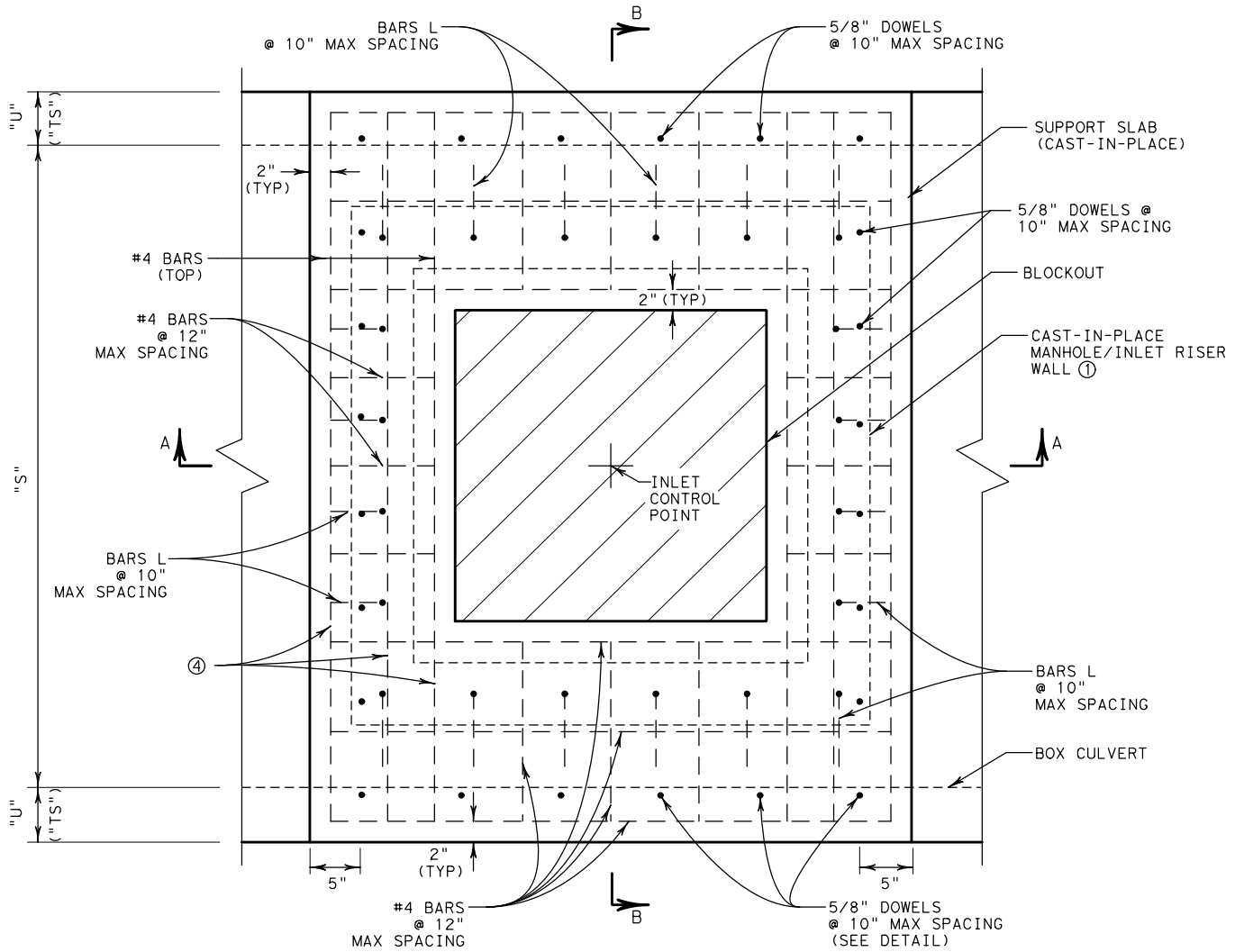
©2022 by Texas Department of Transportation;
All Rights Reserved

SHEET 1 OF 6 SHEETS

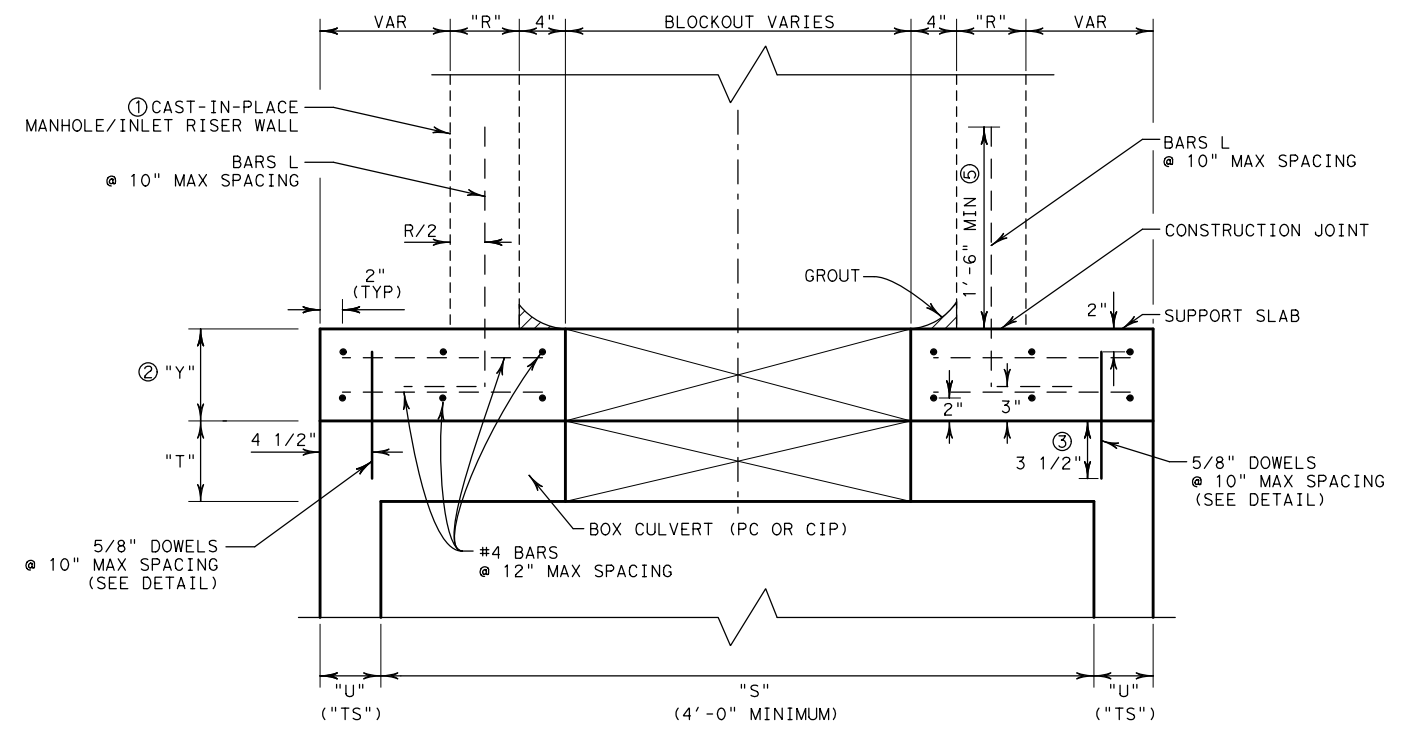
		Fort Worth District Standard	
MANHOLE/INLET CONNECTION TO BOX CULVERT MI-CBC (FTW)			
ORIGINAL DRAWING: 05/2019	micbc-ftw.dgn	FED. RD. DIV. NO. 6	PROJECT NO.
DATE	REVISIONS	STATE DIST. NO. TEXAS	COUNTY
10/2022	REVISE CURB INLET CONNECTION TO REDUCE OPENING SIZE.	FTW	
		CONT. SECT.	JOB HIGHWAY NO.

DISCLAIMER: THIS STANDARD IS COVERED BY THE "TEXAS ENGINEERING PRACTICE ACT". NO WARRANTY OF ANY KIND IS MADE BY TXDOT FOR ANY PURPOSE WHATSOEVER. TXDOT ASSUMES NO RESPONSIBILITY FOR THE CONVERSION OF THIS STANDARD TO OTHER FORMATS OR FOR INCORRECT RESULTS OR DAMAGES RESULTING FROM ITS USE.

https://www.dot.state.tx.us/ftw/spec/info/standard.htm
 10/10/2022 10:43:20 AM
 T:\GROUPS\00_KATY\PROJECTS\TXDOT16121\5 FTW Standards Revision\CADD\SWA1\micbc-ftw.dgn



PLAN VIEW
N. T. S.



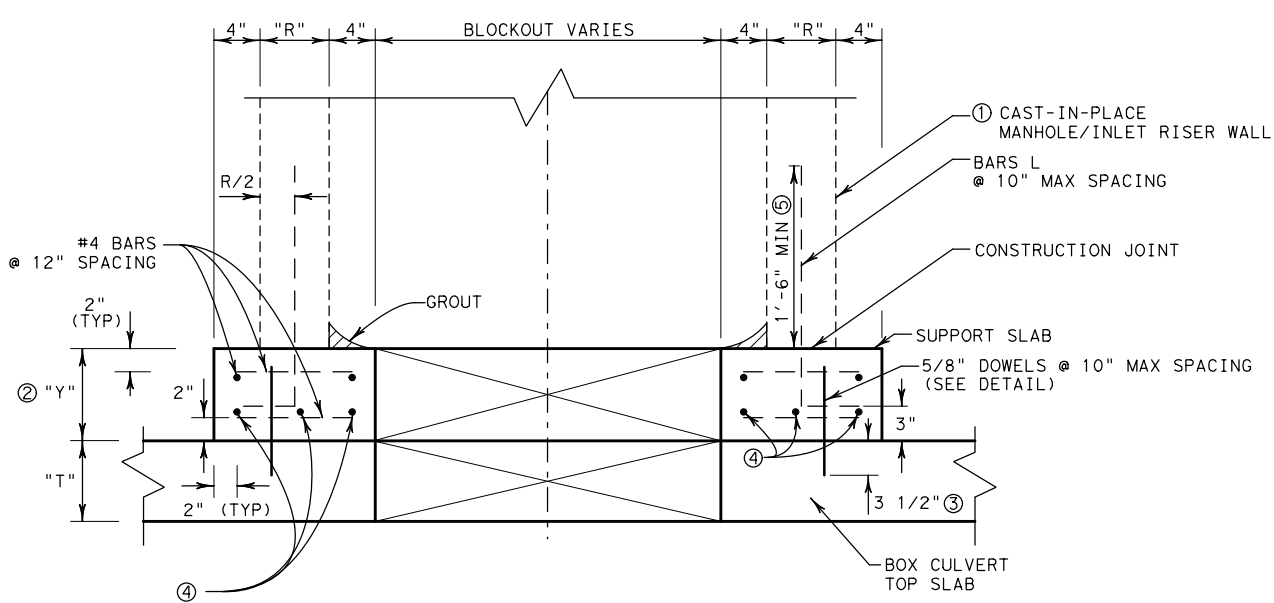
SECTION B-B
N. T. S.

FOR GENERAL NOTES SEE SHEET 1 OF 6.

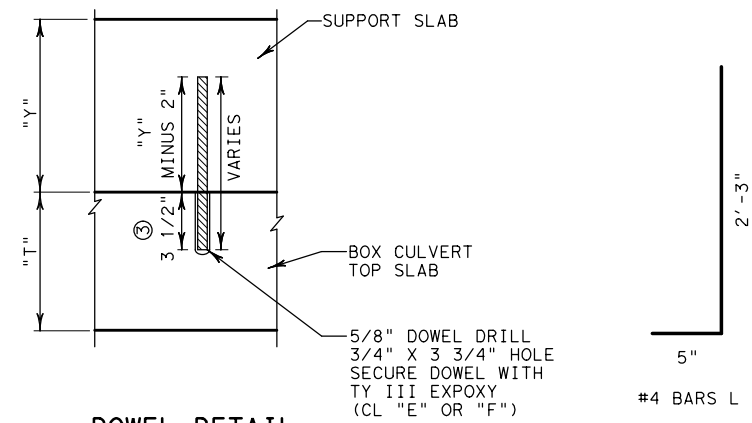
- NOTE:
- "R" = RISER WALL THICKNESS
 - "S" REFERS TO BOX CULVERT SPAN (4' MINIMUM)
 - "T" REFERS TO BOX CULVERT TOP SLAB THICKNESS
 - "U" AND "TS" REFERS TO BOX CULVERT WALL THICKNESS
 - "Y" REFERS TO SUPPORT SLAB THICKNESS

- ① RISER WALL TO BE PLUMB AND VERTICAL.
- ② FOR "S" <= 8', "Y" = 8" MIN
FOR 8' < "S" <= 10', "Y" = 10" MIN
FOR "S" > 10', "Y" = 12" MIN
- ③ FOR "T" LESS THAN 6", REDUCE TO 3".
- ④ 3 - #7 BARS @ 2 EQUAL SPACES. (BOTTOM MAT)
- ⑤ FOR STRUCTURE HEIGHT LESS THAN 1'-6", ADJUST AS DIRECTED.

SHEET 2 OF 6 SHEETS



SECTION A-A
N. T. S.



DOWEL DETAIL
N. T. S.

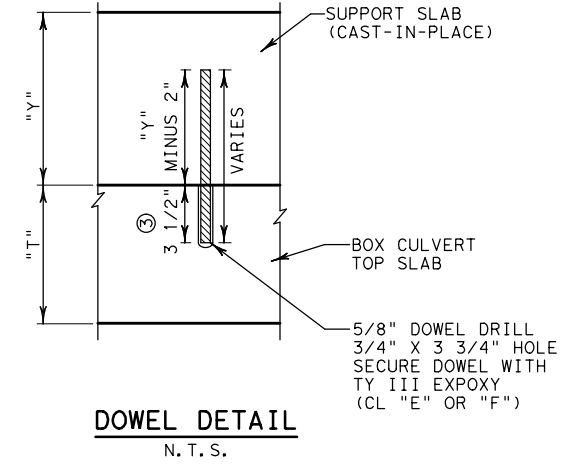
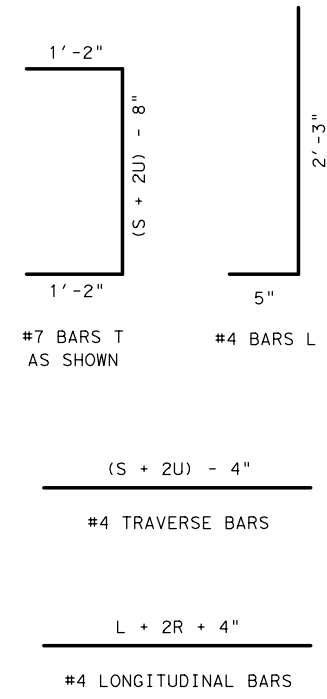
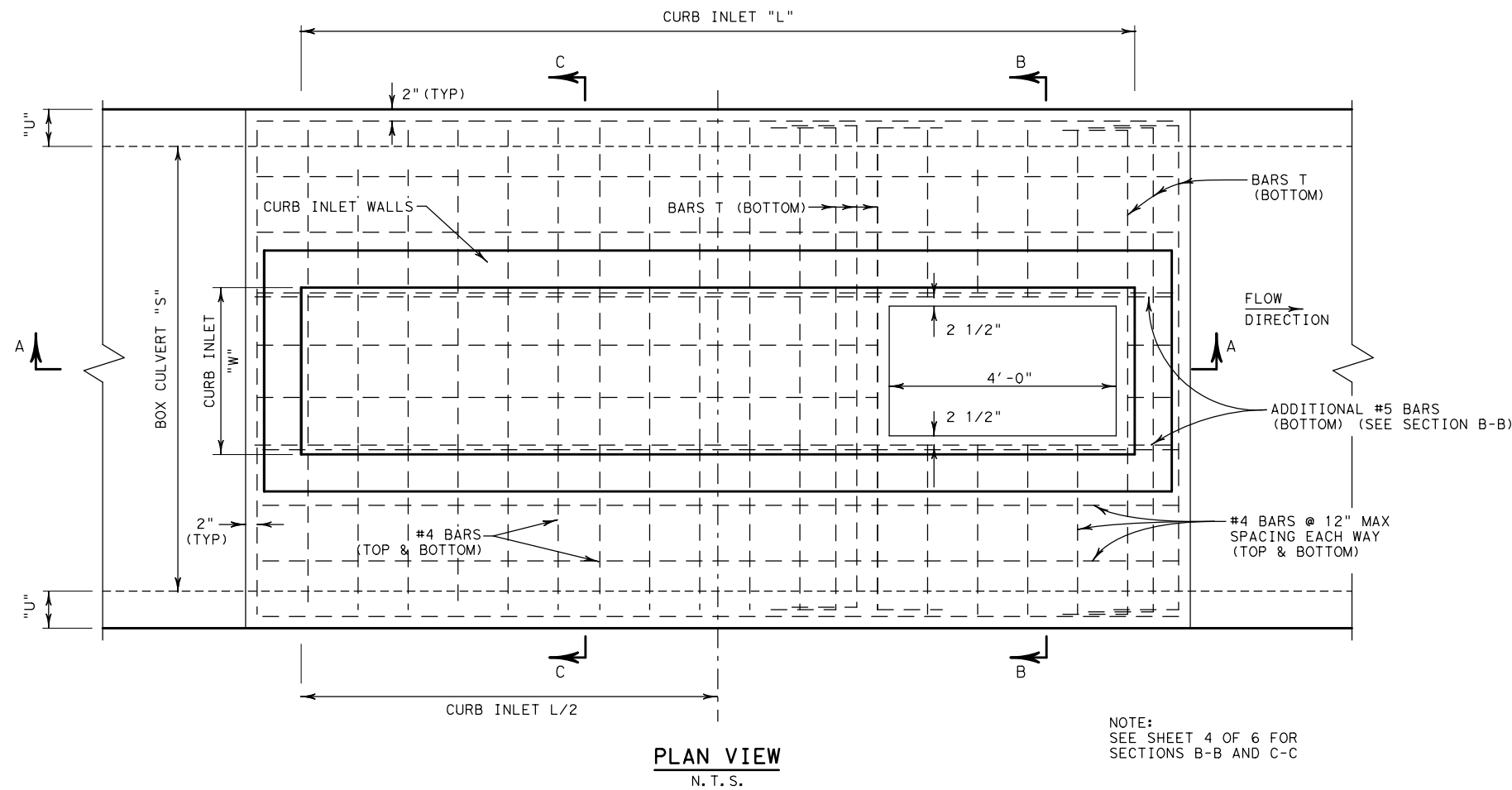
CAST-IN-PLACE MANHOLE/INLET RISER CONNECTION

©2022 by Texas Department of Transportation;
All Rights Reserved

		Fort Worth District Standard	
MANHOLE/INLET CONNECTION TO BOX CULVERT MI-CBC (FTW)			
ORIGINAL DRAWING: 05/2019	micbc-ftw.dgn	FED. RD. DIV. NO. 6	PROJECT NO.
DATE 10/2022	REVISIONS	STATE DIST. NO. TEXAS	COUNTY FTW
REVISE CURB INLET CONNECTION TO REDUCE OPENING SIZE.		CONT.	SECT. JOB HIGHWAY NO.

DISCLAIMER: THIS STANDARD IS COVERED BY THE "TEXAS ENGINEERING PRACTICE ACT". NO WARRANTY OF ANY KIND IS MADE BY TxDOT FOR ANY PURPOSE WHATSOEVER. TxDOT ASSUMES NO RESPONSIBILITY FOR THE CONVERSION OF THIS STANDARD TO OTHER FORMATS OR FOR INCORRECT RESULTS OR DAMAGES RESULTING FROM ITS USE.

https://www.dot.state.tx.us/ftw/spec/info/standard.htm
 10/10/2022 10:43:37 AM
 T:\GROUPS\00_KATY\PROJECTS\TXDOT16121\5 FTW Standards Revision\CADD\SWA1\micbc-ftw.dgn

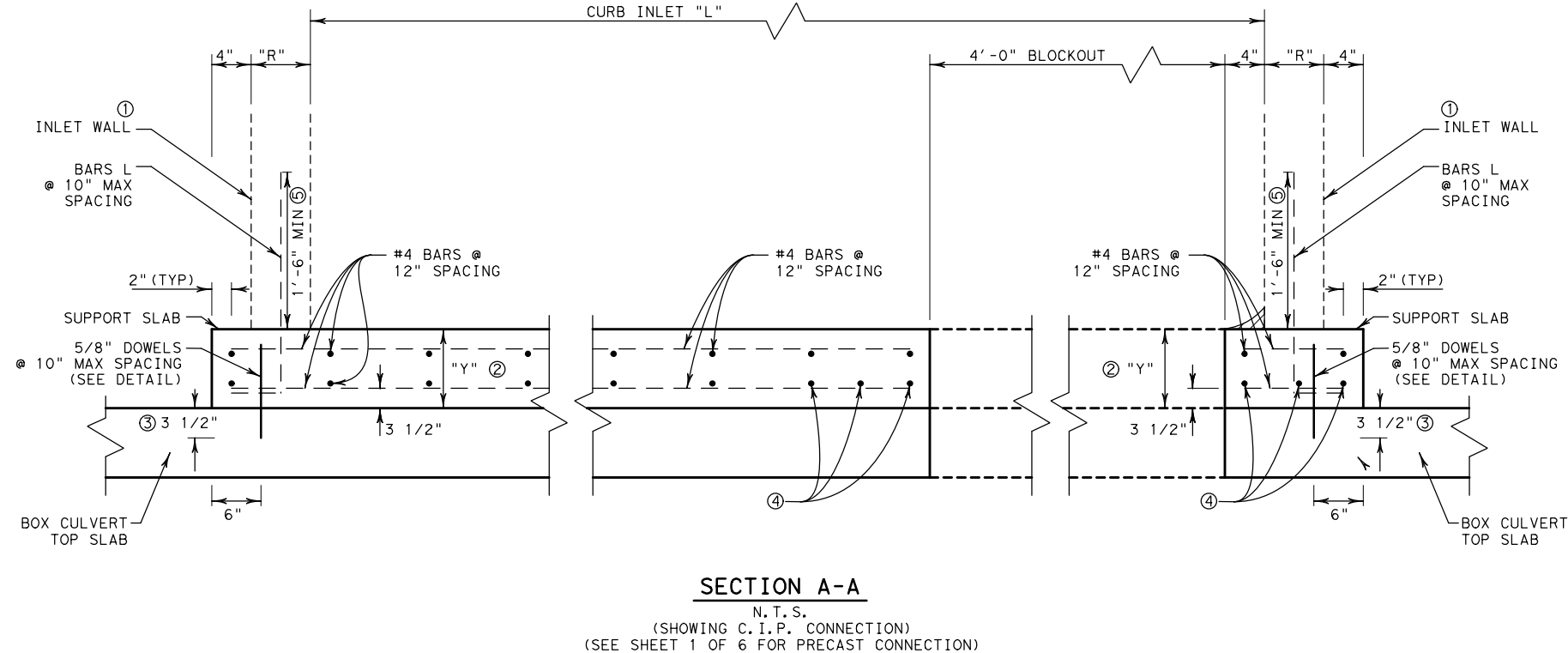


NOTE:
SEE SHEET 4 OF 6 FOR SECTIONS B-B AND C-C

FOR GENERAL NOTES SEE SHEET 1 OF 6.

- NOTE:
- "R" REFERS TO INLET RISER WALL THICKNESS (8" USUAL)
 - "S" REFERS TO BOX CULVERT SPAN (4' MINIMUM)
 - "T" REFERS TO BOX CULVERT TOP SLAB THICKNESS
 - "U" AND "TS" REFER TO BOX CULVERT WALL THICKNESS
 - "Y" REFERS TO SUPPORT SLAB THICKNESS

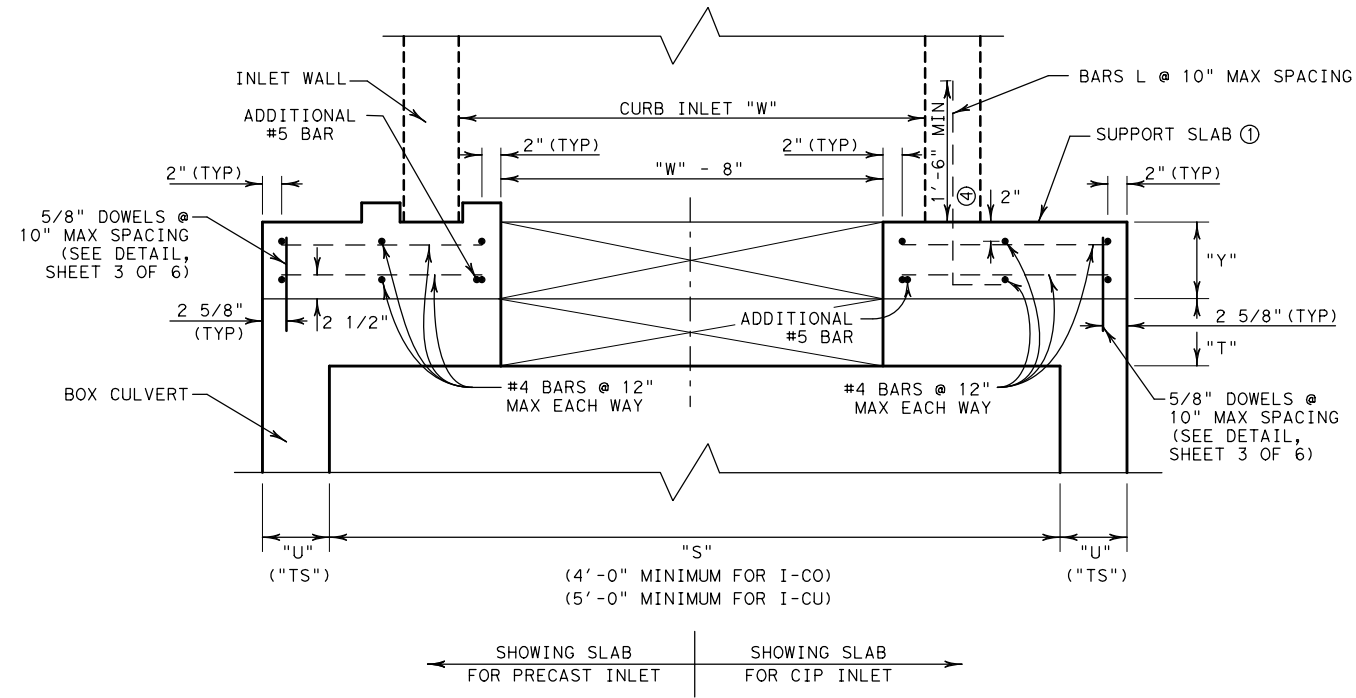
- ① GRADE SUPPORT SLAB AND RECESS TO BE LEVEL, TO ENSURE THAT INLET WALL IS PLUMB AND VERTICAL.
- ② FOR "S" <= 8', "Y" = 8" MIN
FOR 8' < "S" < 10', "Y" = 10" MIN
FOR "S" > 10', "Y" = 12" MIN
- ③ FOR "T" LESS THAN 6", REDUCE TO 3".
- ④ 3 - #7 BARS @ 2 EQUAL SPACES. (BOTTOM MAT)
- ⑤ FOR STRUCTURE HEIGHT LESS THAN 1'-6", ADJUST AS DIRECTED.



CURB INLET (I-CO AND I-CU) CONNECTIONS

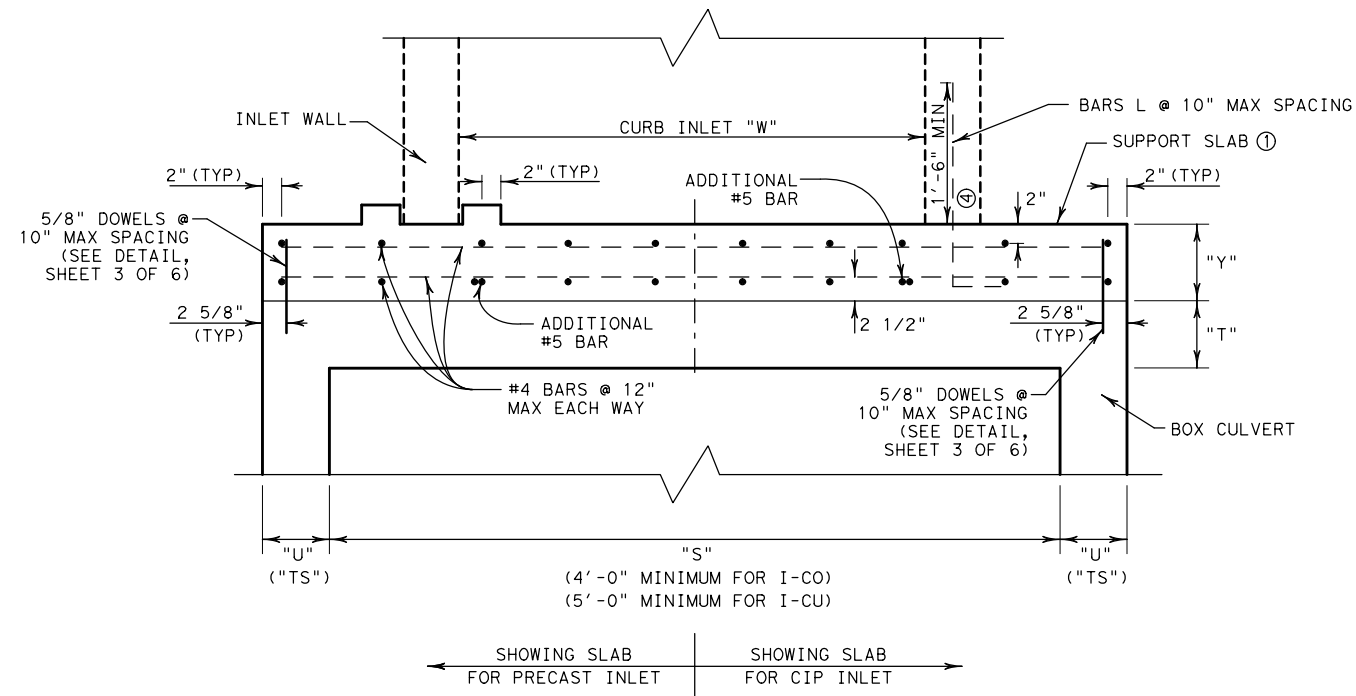
		Fort Worth District Standard	
MANHOLE/INLET CONNECTION TO BOX CULVERT MI-CBC (FTW)			
ORIGINAL DRAWING: 05/2019	micbc-ftw.dgn	FED. RD. DIV. NO. 6	PROJECT NO.
DATE	REVISIONS	STATE DIST. NO.	COUNTY
10/2022	REVISE CURB INLET CONNECTION TO REDUCE OPENING SIZE.	TEXAS	FTW
		CONT.	SECT. JOB HIGHWAY NO.

DISCLAIMER : THIS STANDARD IS COVERED BY THE "TEXAS ENGINEERING PRACTICE ACT". NO WARRANTY OF ANY KIND IS MADE BY TXDOT FOR ANY PURPOSE WHATSOEVER. TXDOT ASSUMES NO RESPONSIBILITY FOR THE CONVERSION OF THIS STANDARD TO OTHER FORMATS OR FOR INCORRECT RESULTS OR DAMAGES RESULTING FROM ITS USE.



SECTION B-B

N. T. S.
(SEE SHEETS 1 & 2 FOR ADDITIONAL INFORMATION
RELATED TO PRECAST OR CAST-IN-PLACE CONNECTIONS)



SECTION C-C

N. T. S.
(SEE SHEETS 1 & 2 FOR ADDITIONAL INFORMATION
RELATED TO PRECAST OR CAST-IN-PLACE CONNECTIONS)

CURB INLET (I-CO AND I-CU) CONNECTIONS

FOR GENERAL NOTES SEE SHEET 1 OF 6.

NOTE:

- "R" REFERS TO INLET RISER WALL THICKNESS (8" USUAL)
- "S" REFERS TO BOX CULVERT SPAN (4' MINIMUM)
- "T" REFERS TO BOX CULVERT TOP SLAB THICKNESS
- "U" AND "TS" REFER TO BOX CULVERT WALL THICKNESS
- "Y" REFERS TO SUPPORT SLAB THICKNESS

- ① GRADE SUPPORT SLAB AND RECESS TO BE LEVEL, TO ENSURE THAT INLET WALL IS PLUMB AND VERTICAL.
- ② FOR "S" <= 8', "Y" = 8" MIN
FOR 8' < "S" < 10', "Y" = 10" MIN
FOR "S" > 10', "Y" = 12" MIN
- ③ FOR "T" LESS THAN 6", REDUCE TO 3".
- ④ FOR STRUCTURE HEIGHT LESS THAN 1'-6", ADJUST AS DIRECTED.

SHEET 4 OF 6 SHEETS

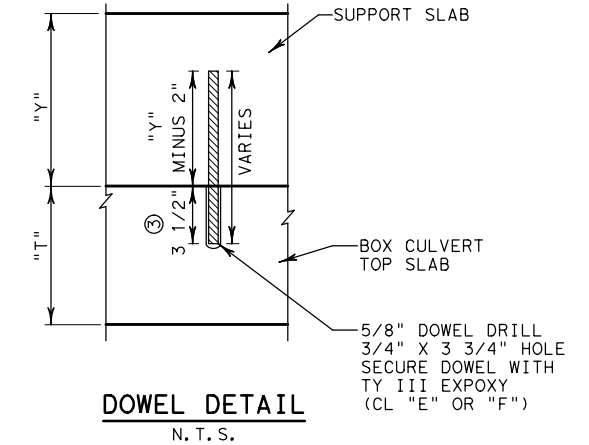
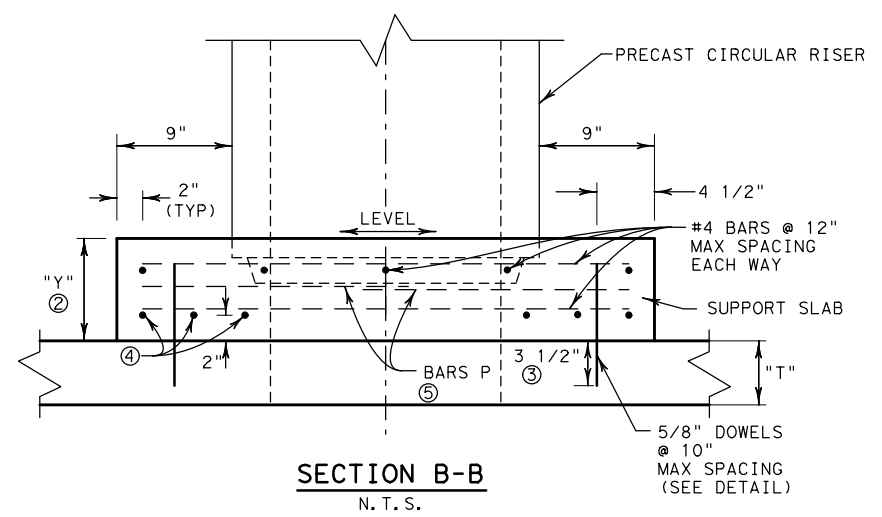
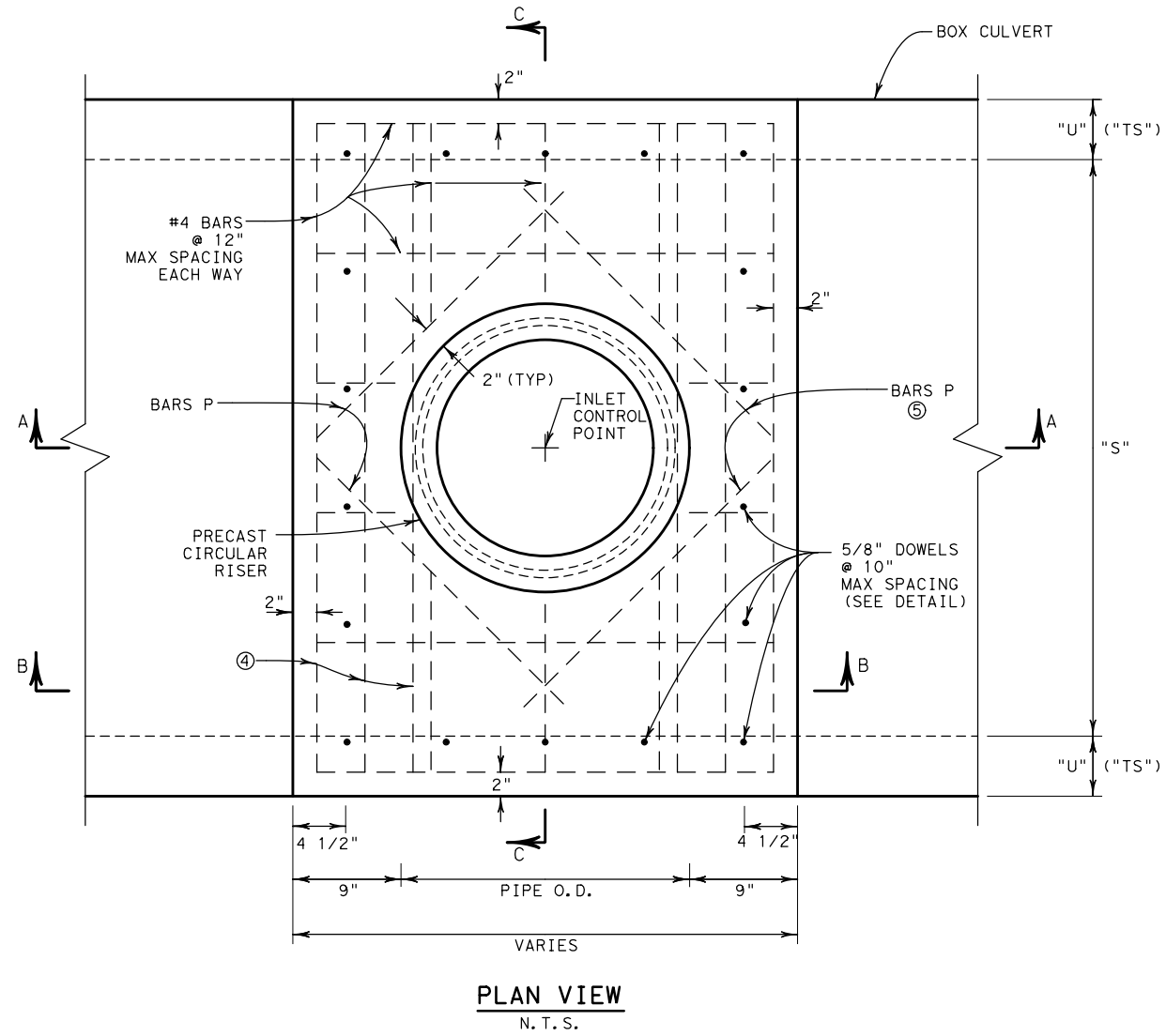
		Fort Worth District Standard	
MANHOLE/INLET CONNECTION TO BOX CULVERT MI-CBC (FTW)			
ORIGINAL DRAWING: 05/2019	micbc-ftw.dgn	FED. RD. DIV. NO. 6	PROJECT NO.
DATE	REVISIONS	STATE	COUNTY
10/2022	REVISE CURB INLET CONNECTION TO REDUCE OPENING SIZE.	TEXAS	FTW
		CONT.	SECT. JOB HIGHWAY NO.

©2022 by Texas Department of Transportation; All Rights Reserved

https://www.dot.state.tx.us/ftw/specinfo/standard.htm
10/10/2022 10:44:04 AM
I:\GROUPS\00_KATY\PROJECTS\TXDOT\16121\5 FTW Standards Revision\CADD\SWA1\micbc-ftw.dgn

DISCLAIMER: THIS STANDARD IS COVERED BY THE "TEXAS ENGINEERING PRACTICE ACT". NO WARRANTY OF ANY KIND IS MADE BY TXDOT FOR ANY PURPOSE WHATSOEVER. TXDOT ASSUMES NO RESPONSIBILITY FOR THE CONVERSION OF THIS STANDARD TO OTHER FORMATS OR FOR INCORRECT RESULTS OR DAMAGES RESULTING FROM ITS USE.

https://www.dot.state.tx.us/ftw/spec/info/standard.htm
 10/10/2022 10:44:19 AM
 I:\GROUPS\00_KATY\PROJECTS\TXDOT16121\5 FTW Standards Revision\CADD\SWA1\micbc-ftw.dgn



FOR GENERAL NOTES SEE SHEET 1 OF 6.

NOTE:

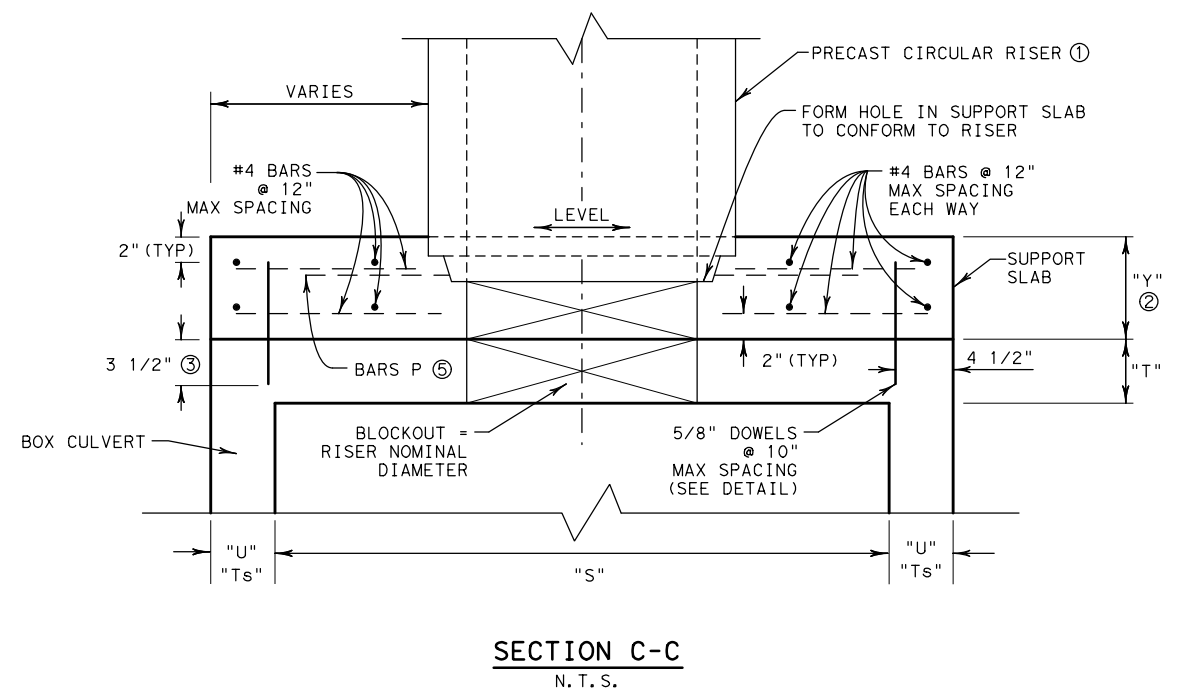
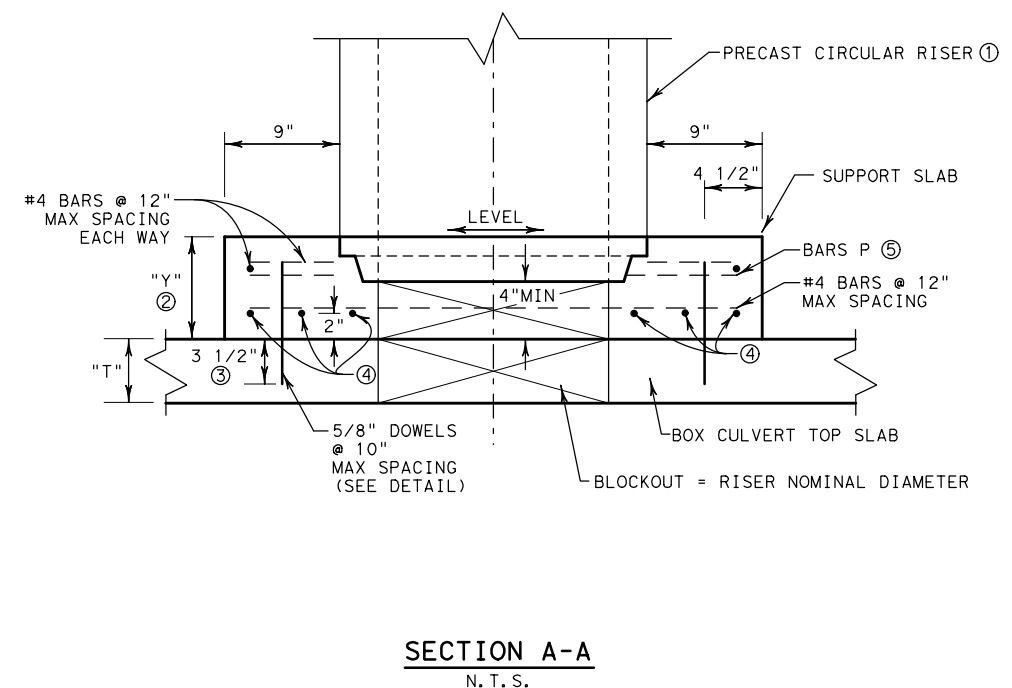
"S" REFERS TO BOX CULVERT SPAN (4' MINIMUM)

"T" REFERS TO BOX CULVERT TOP SLAB THICKNESS

"U" AND "TS" REFERS TO BOX CULVERT WALL THICKNESS

"Y" REFERS TO SUPPORT SLAB THICKNESS

- ① GRADE SUPPORT SLAB AND RECESS TO BE LEVEL, TO ENSURE THAT PRECAST RISER IS PLUMB AND VERTICAL.
- ② FOR "S" <= 8', "Y" = 8" MIN
 FOR 8' < "S" <= 10', "Y" = 10" MIN
 FOR "S" > 10', "Y" = 12" MIN
- ③ FOR "T" LESS THAN 6", REDUCE TO 3".
- ④ 3 - #7 BARS @ 2 EQUAL SPACES. (BOTTOM MAT)
- ⑤ BARS P LENGTH = PIPE O.D. +9"
 PLACE AS SHOWN.

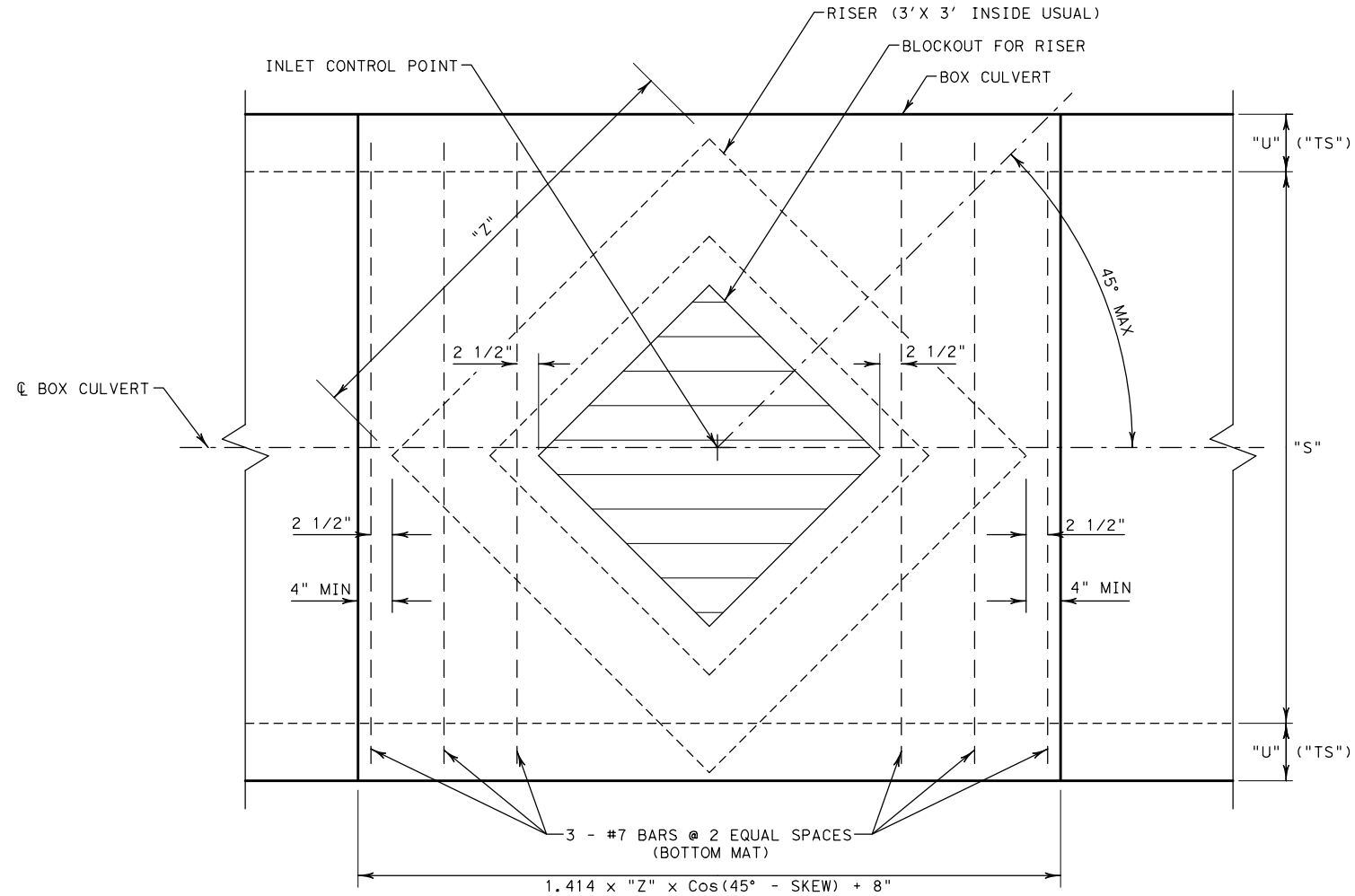


PRECAST CIRCULAR RISER CONNECTION

		Fort Worth District Standard	
MANHOLE/INLET CONNECTION TO BOX CULVERT MI-CBC (FTW)			
ORIGINAL DRAWING: 05/2019	micbc-ftw.dgn	FED. DIV. NO. 6	PROJECT NO.
DATE	REVISIONS	STATE DIST. NO.	COUNTY
10/2022	REVISE CURB INLET CONNECTION TO REDUCE OPENING SIZE.	TEXAS	FTW
		CONT.	SECT. JOB HIGHWAY NO.

DISCLAIMER: THE USE OF THIS STANDARD IS COVERED BY THE "TEXAS ENGINEERING PRACTICE ACT". NO WARRANTY OF ANY KIND IS MADE BY TXDOT FOR ANY PURPOSE WHATSOEVER. TXDOT ASSUMES NO RESPONSIBILITY FOR THE CONVERSION OF THIS STANDARD TO OTHER FORMATS OR FOR INCORRECT RESULTS OR DAMAGES RESULTING FROM ITS USE.

https://www.dot.state.tx.us/ftw/specinfo/standard.htm
 10/10/2022 10:44:38 AM
 T:\GROUPS\00_KATY\PROJECTS\TXDOT16121\5 FTW Standards Revision\CADD\SWA1\micbc-ftw.dgn



PLAN VIEW

TREATMENT FOR SKEWED RISERS
 TYPICAL SUPPORT SLAB REINFORCING NOT SHOWN FOR CLARITY. PROVIDE #4 BARS AT 12" MAX SPACING IN BOTH DIRECTIONS AND DOWELS AS DETAILED ON SHEET 1 & 2.

FOR GENERAL NOTES SEE SHEET 1 OF 6.

NOTE:
 "S" REFERS TO BOX CULVERT SPAN (4' MINIMUM)
 "U" AND "TS" REFER TO BOX CULVERT WALL THICKNESS
 "Z" = OUTSIDE DIMENSION OF INLET OR MANHOLE RISER

SHEET 6 OF 6 SHEETS

		Fort Worth District Standard	
MANHOLE/INLET CONNECTION TO BOX CULVERT MI-CBC (FTW)			
ORIGINAL DRAWING: 05/2019	micbc-ftw.dgn	FED. RD. DIV. NO. 6	PROJECT NO.
DATE	REVISIONS	STATE	COUNTY
10/2022	REVISE CURB INLET CONNECTION TO REDUCE OPENING SIZE.	TEXAS	FTW
		CONT.	SECT. JOB HIGHWAY NO.