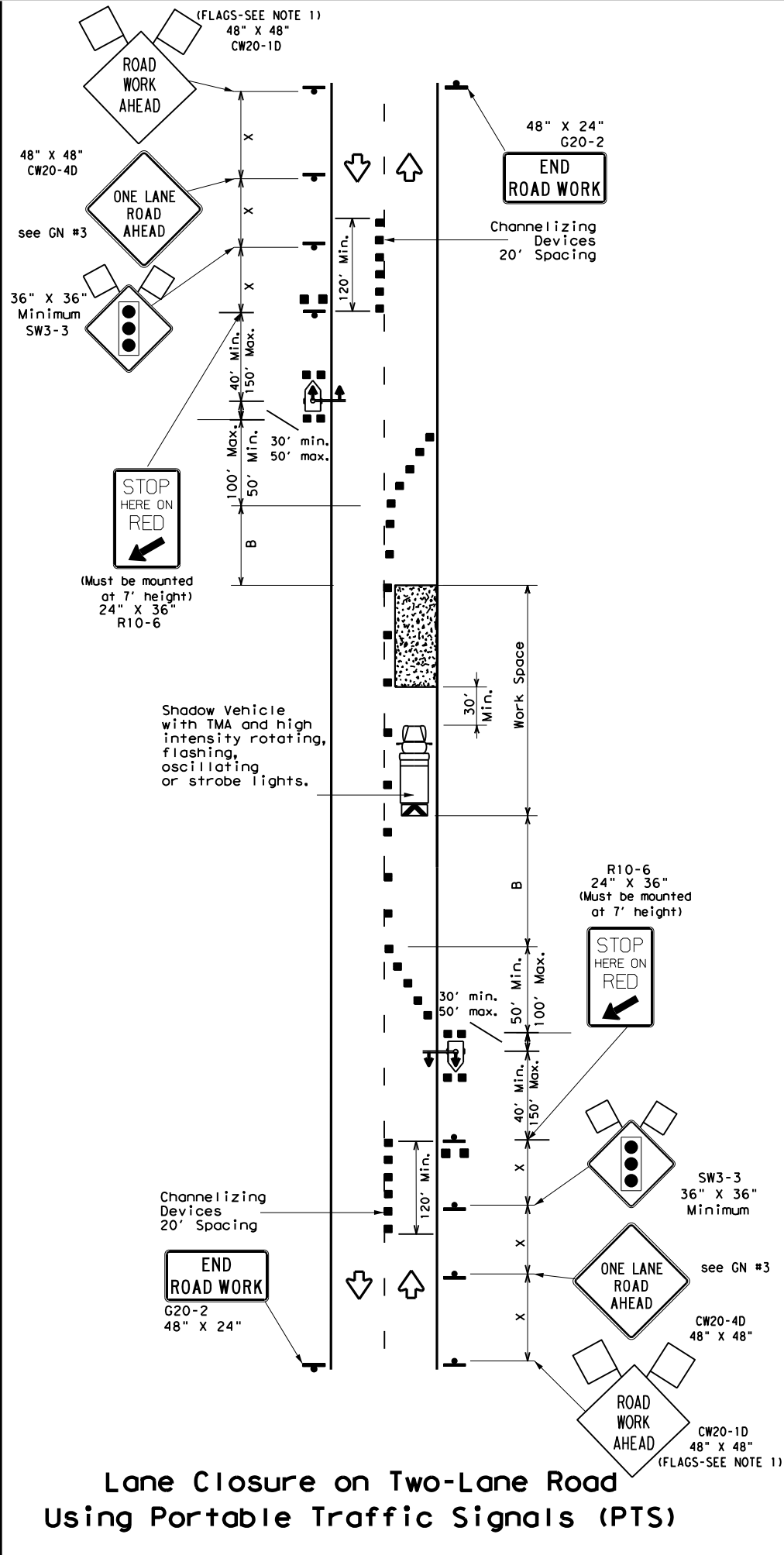
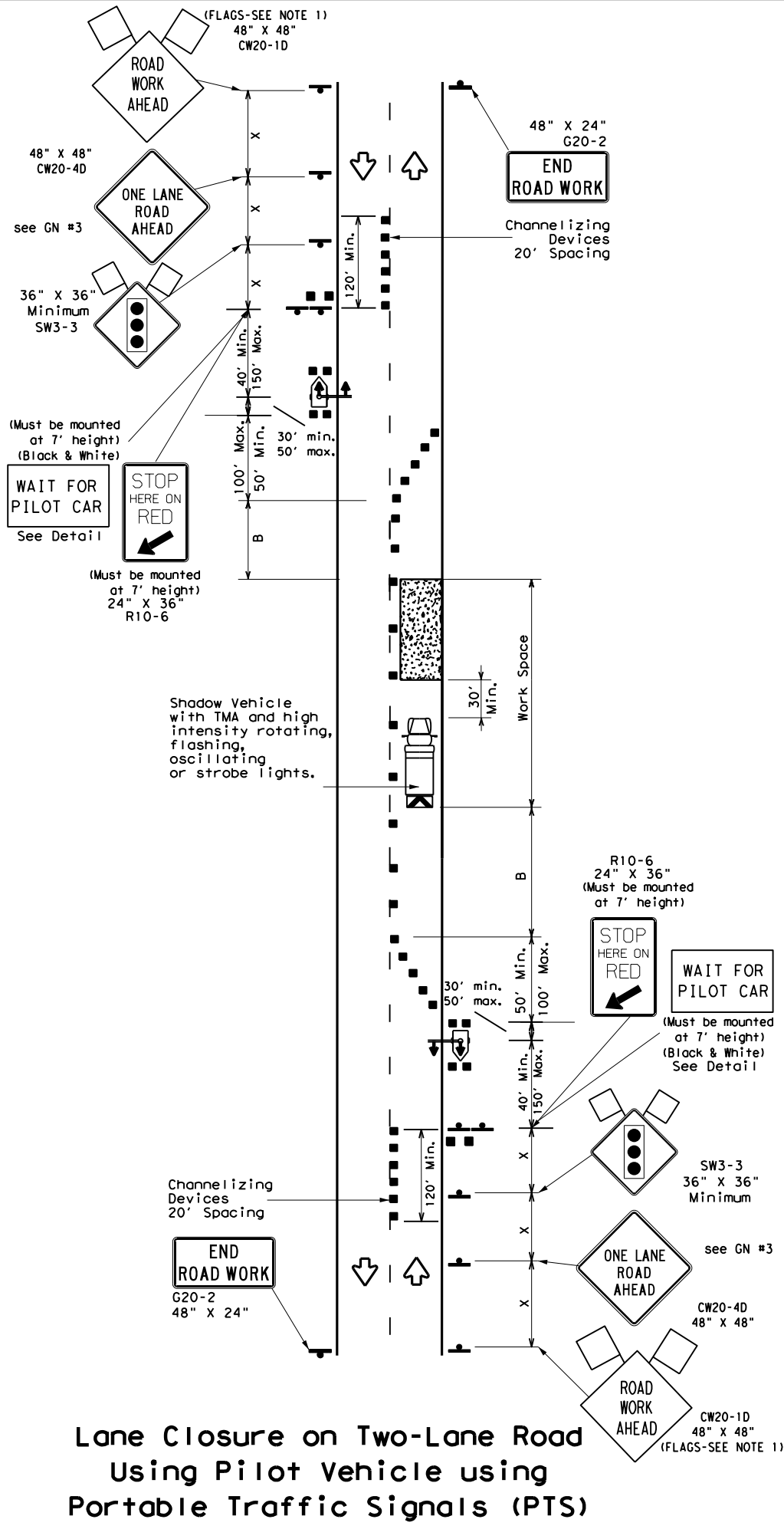


DISCLAIMER: THIS STANDARD IS GOVERNED BY THE "TEXAS ENGINEERING PRACTICE ACT". NO WARRANTY OF ANY KIND IS MADE BY TxDOT FOR ANY PURPOSE WHATSOEVER. TxDOT ASSUMES NO RESPONSIBILITY FOR THE CONVERSION OF THIS STANDARD TO OTHER FORMATS OR FOR INCORRECT RESULTS OR DAMAGES RESULTING FROM ITS USE.



LEGEND

	Type 3 Barricade		Channelizing Devices (CDs)
	Heavy Work Vehicle		Traffic Flow
	Truck Mounted Attenuator (TMA)		Temporary or Portable Traffic Signal
	Sign		Flag

Posted Speed *	Formula	Minimum Desirable Taper Lengths **			Suggested Maximum Spacing of Channelizing Devices		Minimum Sign Spacing "X" Distance	Suggested Longitudinal Buffer Space "B"	Stopping Sight Distance
		10' Offset	11' Offset	12' Offset	On a Taper	On a Tangent			
30	$L = \frac{WS^2}{60}$	150'	165'	180'	30'	60'	120'	90'	200'
35		205'	225'	245'	35'	70'	160'	120'	250'
40		265'	295'	320'	40'	80'	240'	155'	305'
45	L = WS	450'	495'	540'	45'	90'	320'	195'	360'
50		500'	550'	600'	50'	100'	400'	240'	425'
55		550'	605'	660'	55'	110'	500'	295'	495'
60		600'	660'	720'	60'	120'	600'	350'	570'
65		650'	715'	780'	65'	130'	700'	410'	645'
70		700'	770'	840'	70'	140'	800'	475'	730'
75		750'	825'	900'	75'	150'	900'	540'	820'

* Conventional Roads Only
 ** Taper lengths have been rounded off.
 L=Length of Taper (FT) W=Width of Offset (FT) S=Posted Speed (MPH)

TYPICAL USAGE

MOBILE	SHORT DURATION	SHORT TERM STATIONARY	INTERMEDIATE TERM STATIONARY	LONG TERM STATIONARY
		✓		

GENERAL NOTES

- Flags attached to signs where shown are REQUIRED.
- All traffic control devices illustrated are REQUIRED as noted.
- The BE PREPARED TO STOP sign may be installed after the ONE LANE ROAD sign. (refer to SHSD)
- ROAD WORK AHEAD sign may be repeated if the visibility of the work zone is less than 1500'.
- If pilot car is used to guide vehicles through traffic control zone, vehicle shall have an identification name displayed and "PILOT CAR, FOLLOW ME" (G20-4) sign or message board mounted in a conspicuous position on rear.
- Channelizing devices are recommended for all applications. Devices may be offset as needed for Maintenance operations.
- Portable temporary STOP bar may be used in conjunction with "Stop here on Red".
- Proper alignment of overhead signal with on-coming lane should be ensured.
- A Shadow Vehicle with a TMA should be used anytime it can be positioned 30 to 100 feet in advance of the area of crew exposure without adversely affecting the performance or quality of the work. If workers are no longer present but road or work conditions require the traffic control to remain in place, Type 3 Barricades or other channelizing devices may be substituted for the Shadow Vehicle and TMA.



1.5" Radius, 0.625" Border, 0.375" Indent, Black on White;
 [WAIT FOR] D; [PILOT CAR] D;
 (Must be mounted at 7' height)

Texas Department of Transportation Fort Worth District Standard

PORTABLE TRAFFIC SIGNAL PTS (FTW) - 21

ORIGINAL DRAWING: 02/2021	pfs-ftw.dgn	FED. RD. DIV. NO. 6	PROJECT NO.	SHEET NO.
DATE: 05/11/21	REVISIONS:	STATE DIST. NO. TEXAS	COUNTY	
		CONT. SECT.	JOB	HIGHWAY NO.