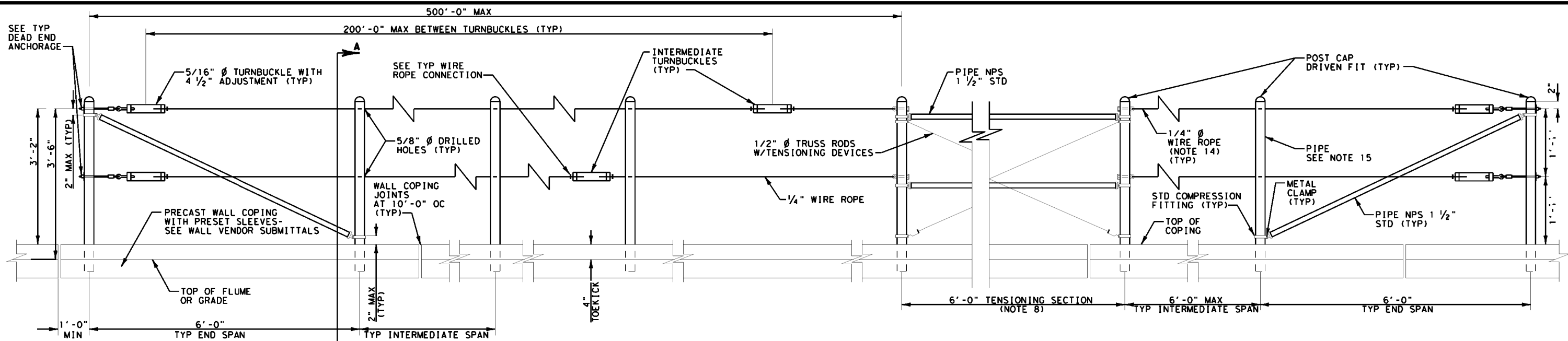


DISCLAIMER: THIS STANDARD IS COVERED BY THE "TEXAS ENGINEERING PRACTICE ACT". NO WARRANTY OF ANY KIND IS MADE BY TxDOT FOR ANY PURPOSE WHATSOEVER. TxDOT ASSUMES NO RESPONSIBILITY FOR THE CONVERSION OF THIS STANDARD TO OTHER FORMATS OR FOR INCORRECT RESULTS OR DAMAGES RESULTING FROM ITS USE.

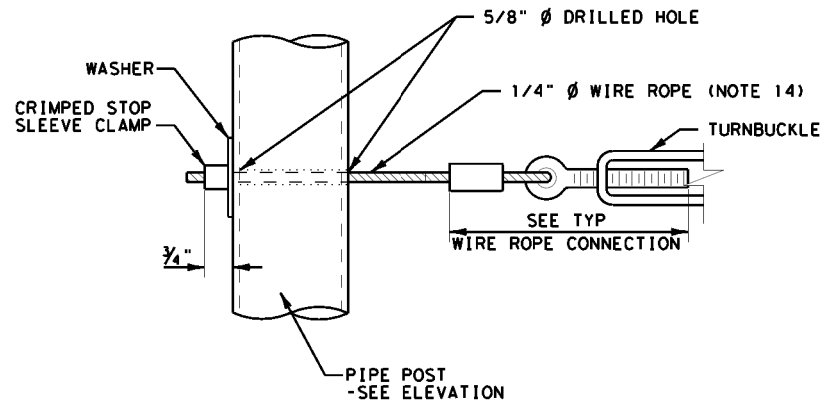
https://www.dot.state.tx.us/fw/specinfo/standard.htm
 9/5/2019
 I:\CENTDES\NDistrict Hydraulics\Inlet Standards Update\100% website\roadway\ rwsnr - ftw.dgn



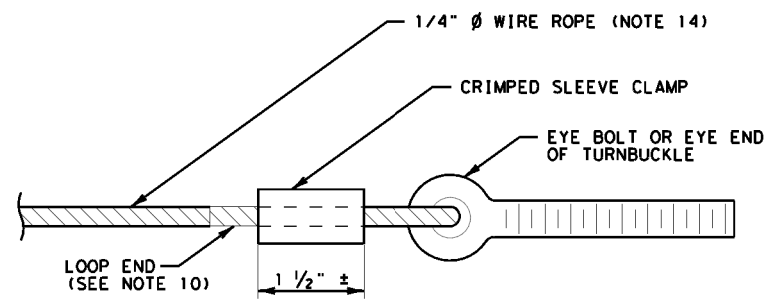
ELEVATION
 LOOKING AT FILL SIDE
 N. T. S.

GENERAL NOTES

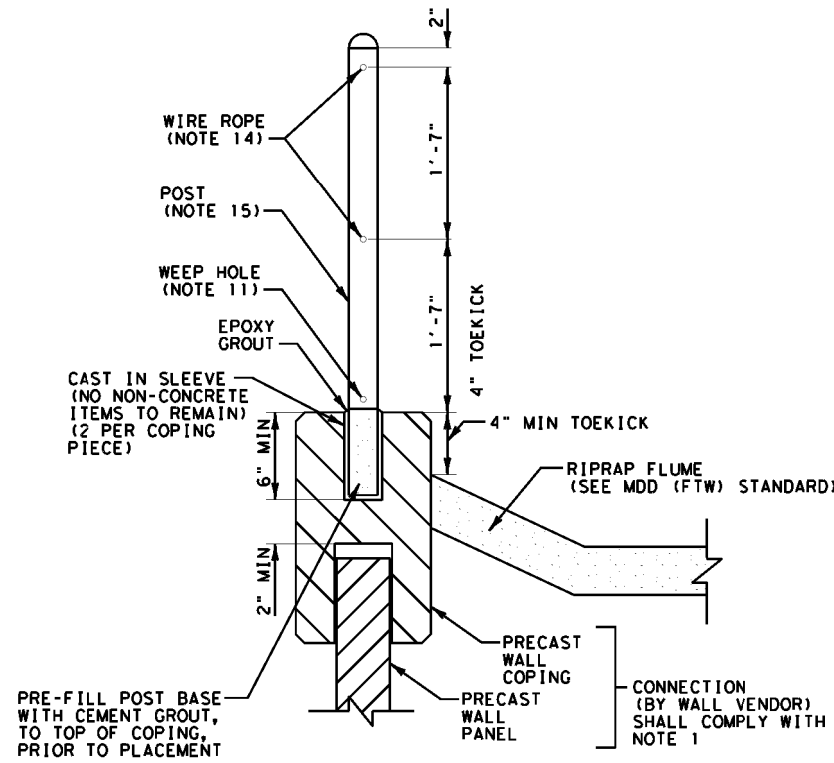
- DESIGNED FOR 50 PLF DISTRIBUTED, 200 LB CONCENTRATED SERVICE LOAD APPLIED AT ANY POINT IN A SINGLE BAY, ON A SINGLE CABLE. RAIL HAS BEEN DESIGNED AS AN ADDITIONAL SAFETY MEASURE FOR ROADWAY CONSTRUCTION AND MAINTENANCE PERSONNEL. RAIL IS NOT DESIGNED TO RESTRAIN EQUIPMENT. RAIL IS NOT DESIGNED AS A PUBLIC-ACCESS PEDESTRIAN RAIL OR AS A TRAFFIC BARRIER.
- INTERMEDIATE TURNBUCKLES TO BE PLACED IN ADJACENT SPANS.
- WIRE ROPE SHALL NOT BE SPLICED BETWEEN INTERMEDIATE TURNBUCKLES AND END POSTS.
- ALL ELEMENTS TO BE HOT-DIP GALVANIZED, AFTER FABRICATION.
- POSTS TO BE PLUMB, WITHIN 1" IN ANY DIRECTION.
- ALIGNMENT OF HOLES IN POSTS MAY VARY TO CONFORM TO SLOPE OF TOP OF RETAINING WALL. WIRE ROPE TO BE PARALLEL TO TOP OF WALL.
- VERIFY ALL DEPENDENT DIMENSIONS IN THE FIELD BEFORE ORDERING OR FABRICATING ANY MATERIAL. SUBMIT SHOP DRAWINGS PRIOR TO FABRICATION.
- LINE POSTS SHALL BE BRACED HORIZONTALLY AND TRUSSED DIAGONALLY IN BOTH DIRECTIONS AT INTERVALS NOT TO EXCEED 500', OR AT CHANGES IN ALIGNMENT. (SEE NOTE 9)
- TYPICAL END SPANS, BRACED IN BOTH DIRECTIONS, SHALL BE CONSTRUCTED AT CHANGES IN LINE WHERE THE ANGLE OF DEFLECTION IS 10° OR MORE. AT ANGLES GREATER THAN 30°, PROVIDE END SPAN AT EACH SIDE OF CORNER & INTERRUPT WIRE ROPE.
- PROVIDE THIMBLES AT ALL CABLE LOOPS.
- PROVIDE 1/2" DIA. WEEP HOLES AT BASE OF ALL POSTS, 1/4" ABOVE TOP OF COPING.
- BURRS SHALL BE REMOVED IN ALL DRILLED HOLES PRIOR TO GALVANIZING AND/OR ROPE INSTALLATION.
- PRELOAD WIRE ROPE MIN 1250 LB, MAX 1500 LB. WIRE ROPE MUST NOT DEFLECT MORE THAN 3" IN ANY DIRECTION WHEN A 200 POUND LATERAL FORCE IS APPLIED. ALLOW EPOXY GROUT AT POSTS TO FULLY CURE PRIOR TO LOADING.
- WIRE ROPE TO BE 1/4" DIA, 7X19 GALVANIZED AIRCRAFT GRADE, MEETING FS RR-W-410H, WITH A MINIMUM BREAKING STRENGTH OF 7000 LB.
- POSTS TO BE HSS 3.0 X 0.125, MIN YIELD STRENGTH 42,000 PSI, ASTM A500 GRADE B, HOT-DIP GALVANIZED AFTER FABRICATION.



TYP DEAD END ANCHORAGE
 N. T. S.



TYP WIRE ROPE CONNECTION
 N. T. S.



SECTION A-A
 N. T. S.

		Fort Worth District Standard	
<h2>TYPICAL RETAINING WALL SAFETY MAINTENANCE RAIL</h2> <h3>RW-SMR</h3>			
ORIGINAL DRAWING: 05/2019	rwsnr-ftw.dgn	REV. NO. 6	PROJECT NO.
DATE 05/2019	REVISIONS NEW STANDARD	STATE TEXAS	COUNTY FTW
		CONT.	SECT. JOB HIGHWAY NO.