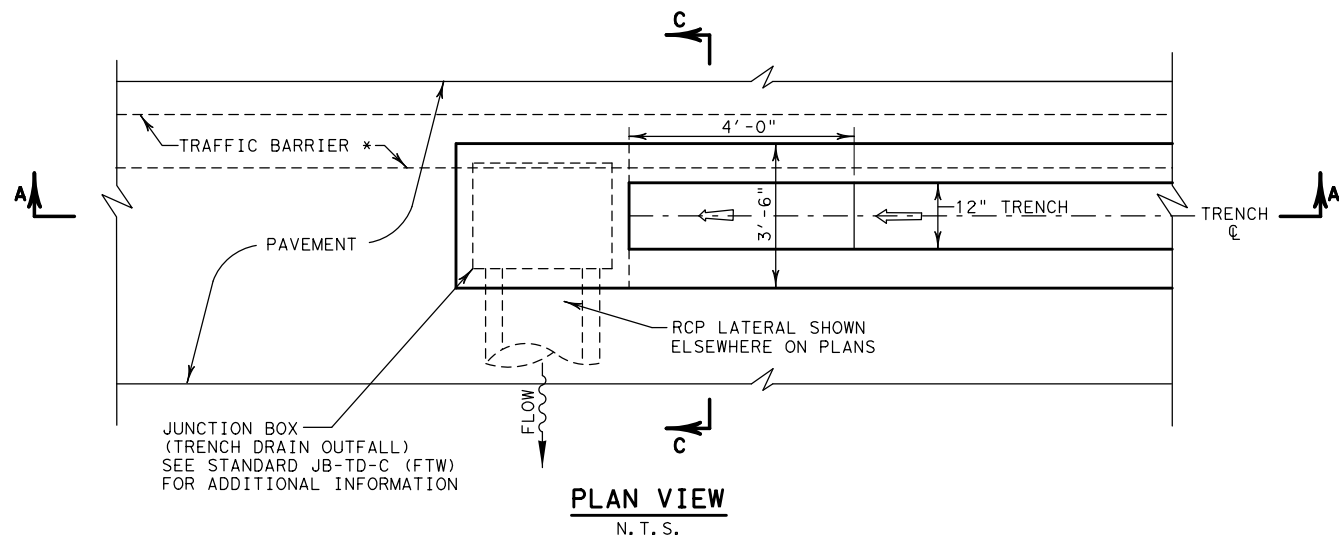
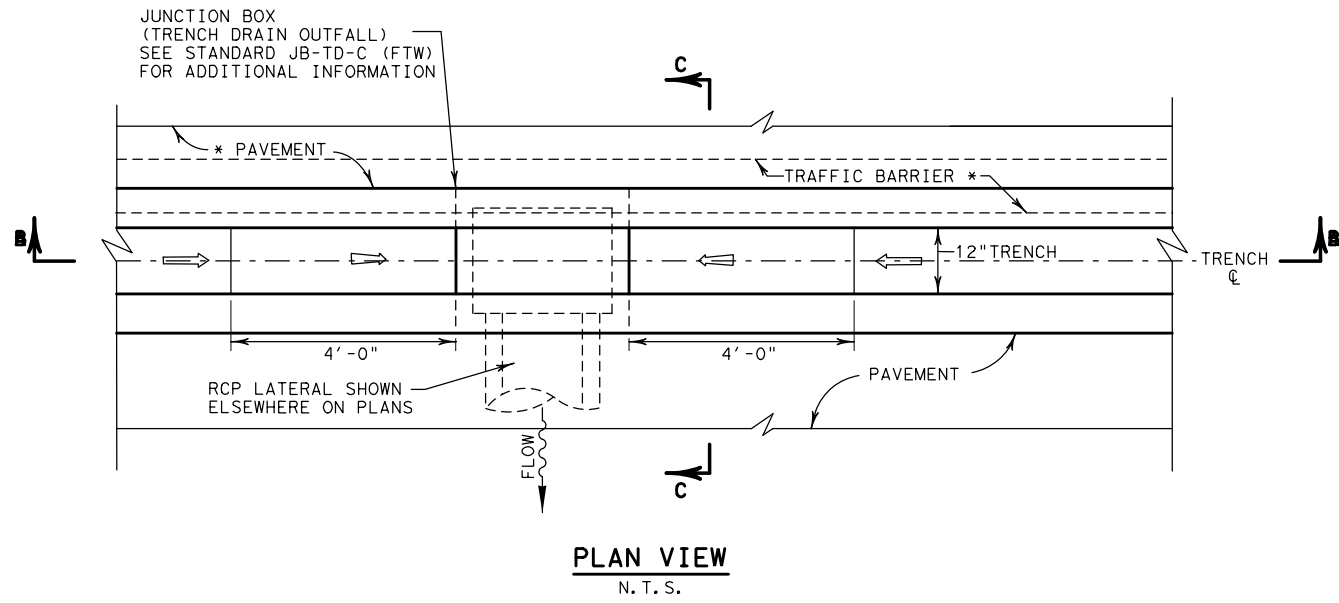


DISCLAIMER: THIS STANDARD IS GOVERNED BY THE "TEXAS ENGINEERING PRACTICE ACT". NO WARRANTY OF ANY KIND IS MADE BY TxDOT FOR ANY PURPOSE WHATSOEVER. TxDOT ASSUMES NO RESPONSIBILITY FOR THE CONVERSION OF THIS STANDARD TO OTHER FORMATS OR FOR INCORRECT RESULTS OR DAMAGES RESULTING FROM ITS USE.

http://www.dot.state.tx.us/ftw/specinfo/standard.htm
 11/6/2020 11:07:36 AM
 P:\PROJECTS\TXDOT\16121\5 FTW Standards Revision\CADD\Modifications in Progress\tdc-ftw.dgn

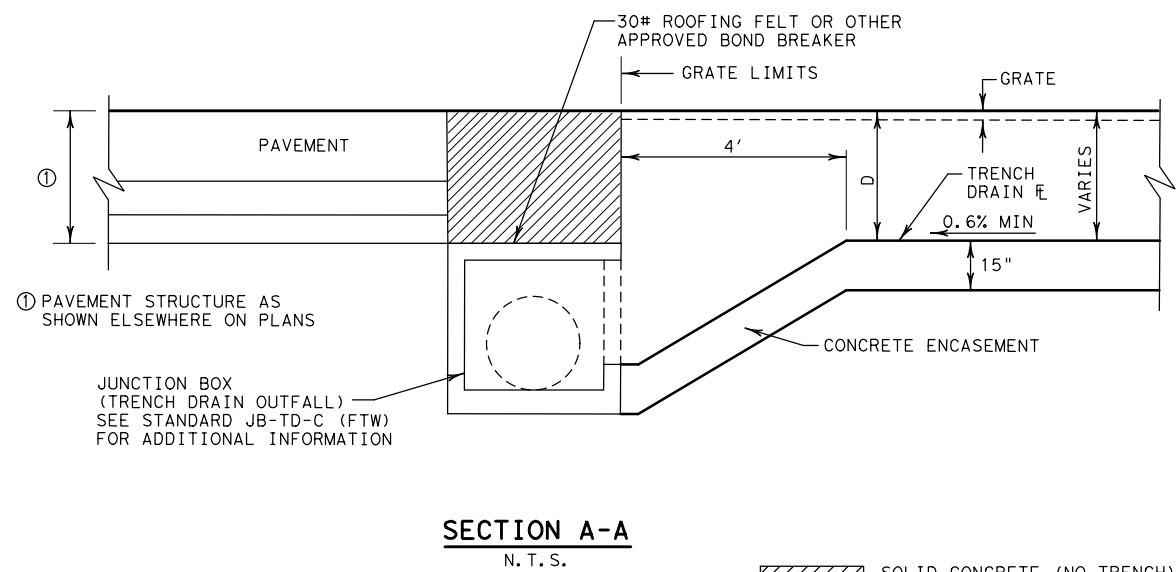


* WHERE SHOWN ON PLANS

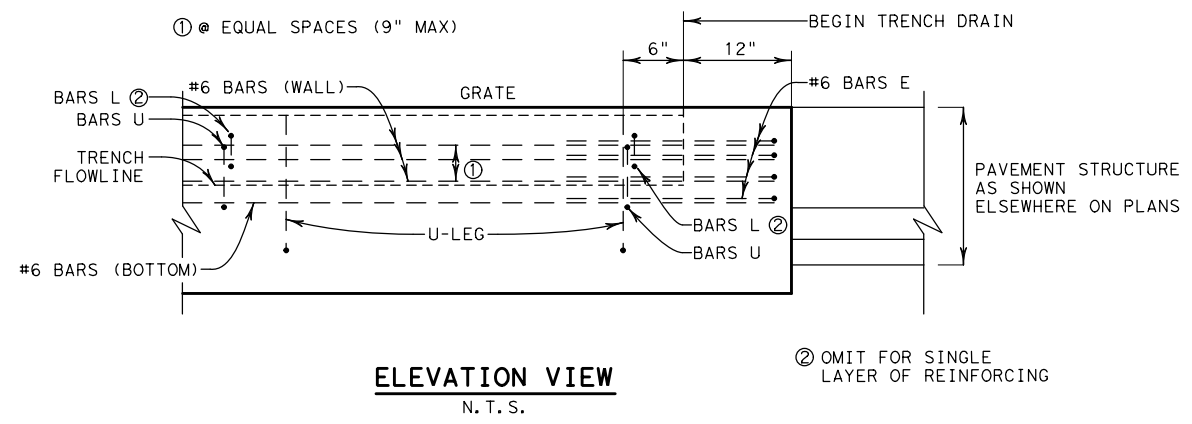
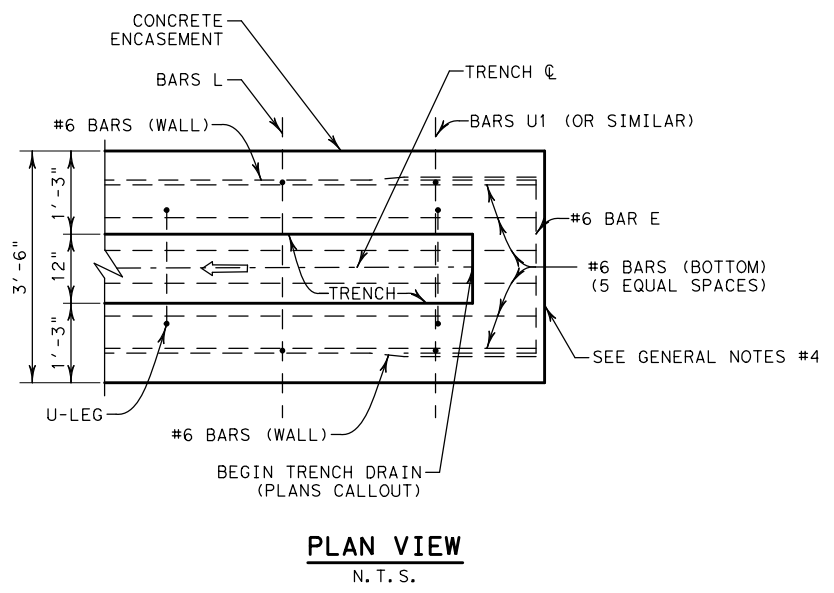
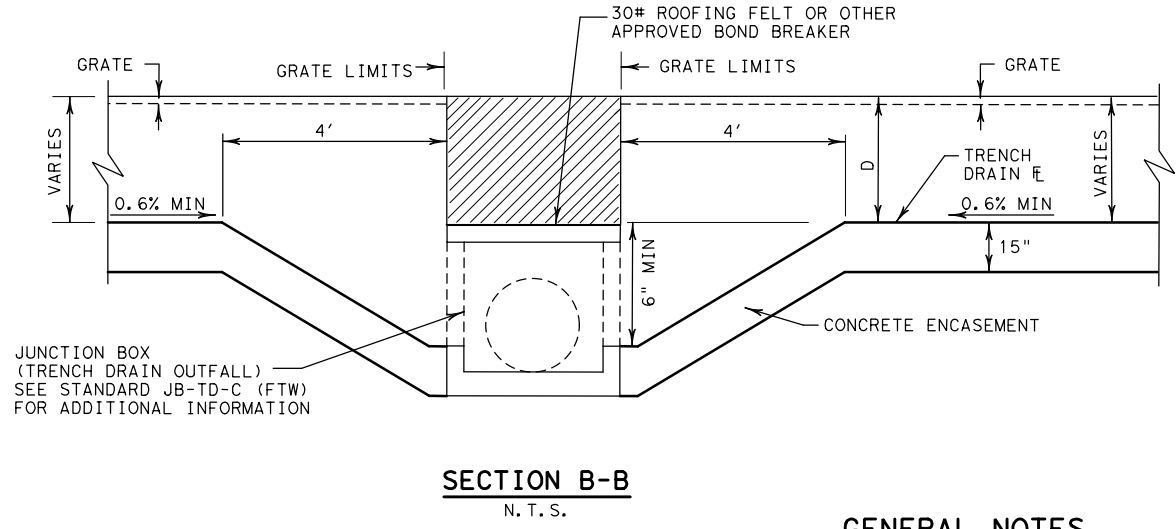


SINGLE DRAIN

DUAL DRAIN



SOLID CONCRETE (NO TRENCH) MATCH DEPTH OF PAVEMENT STRUCTURE. EXTEND CRCP TRANSVERSE REINFORCEMENT AND TRENCH DRAIN LONGITUDINAL REINFORCEMENT THROUGH CONCRETE. CONCRETE BLOCK TO BE SUBSIDIARY TO TRENCH DRAIN.



② OMIT FOR SINGLE LAYER OF REINFORCING

GENERAL NOTES

1. ALL CONCRETE SHALL BE CLASS "C".
2. ALL REINFORCING STEEL SHALL BE GRADE 60.
3. PROPRIETARY TRENCH DRAIN SYSTEMS ARE ALLOWED. SUBMIT MANUFACTURE'S DRAWINGS AND DETAILS FOR APPROVAL, PRIOR TO CONSTRUCTION.
4. PLACE A SEALED 1/2" CONSTRUCTION JOINT ALONG ALL VERTICAL FACES ABUTTING CONCRETE PAVEMENT. USE CLASS 5 OR 8 JOINT SEALANT TO SEAL THE JOINT. SEE STANDARD JS(FTW) FOR ADDITIONAL INFORMATION.
5. JUNCTION BOXES FOR TRENCH DRAIN OUTFALL WILL NOT BE PAID FOR DIRECTLY, BUT WILL BE CONSIDERED SUBSIDIARY TO ITEM 474.

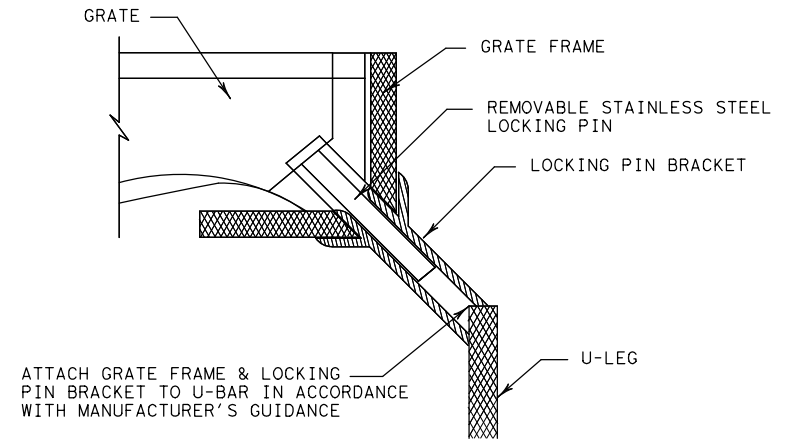
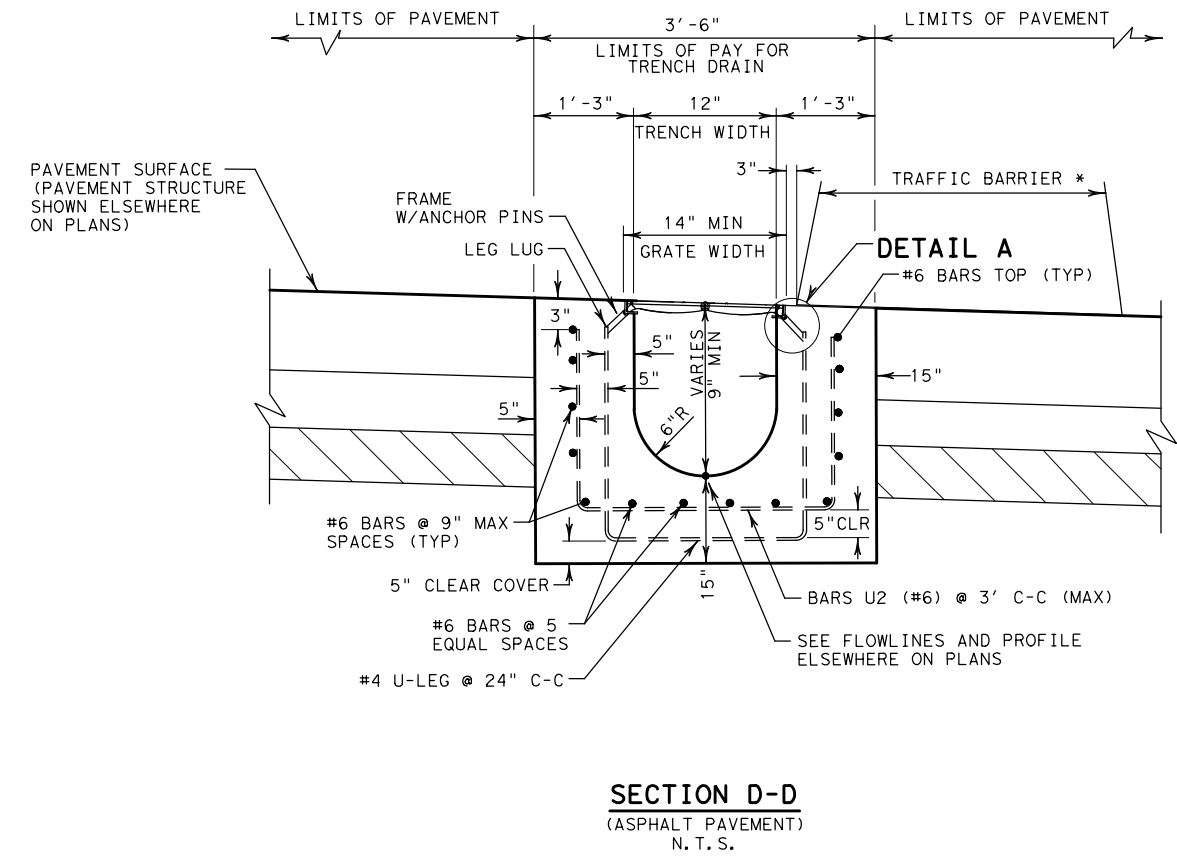
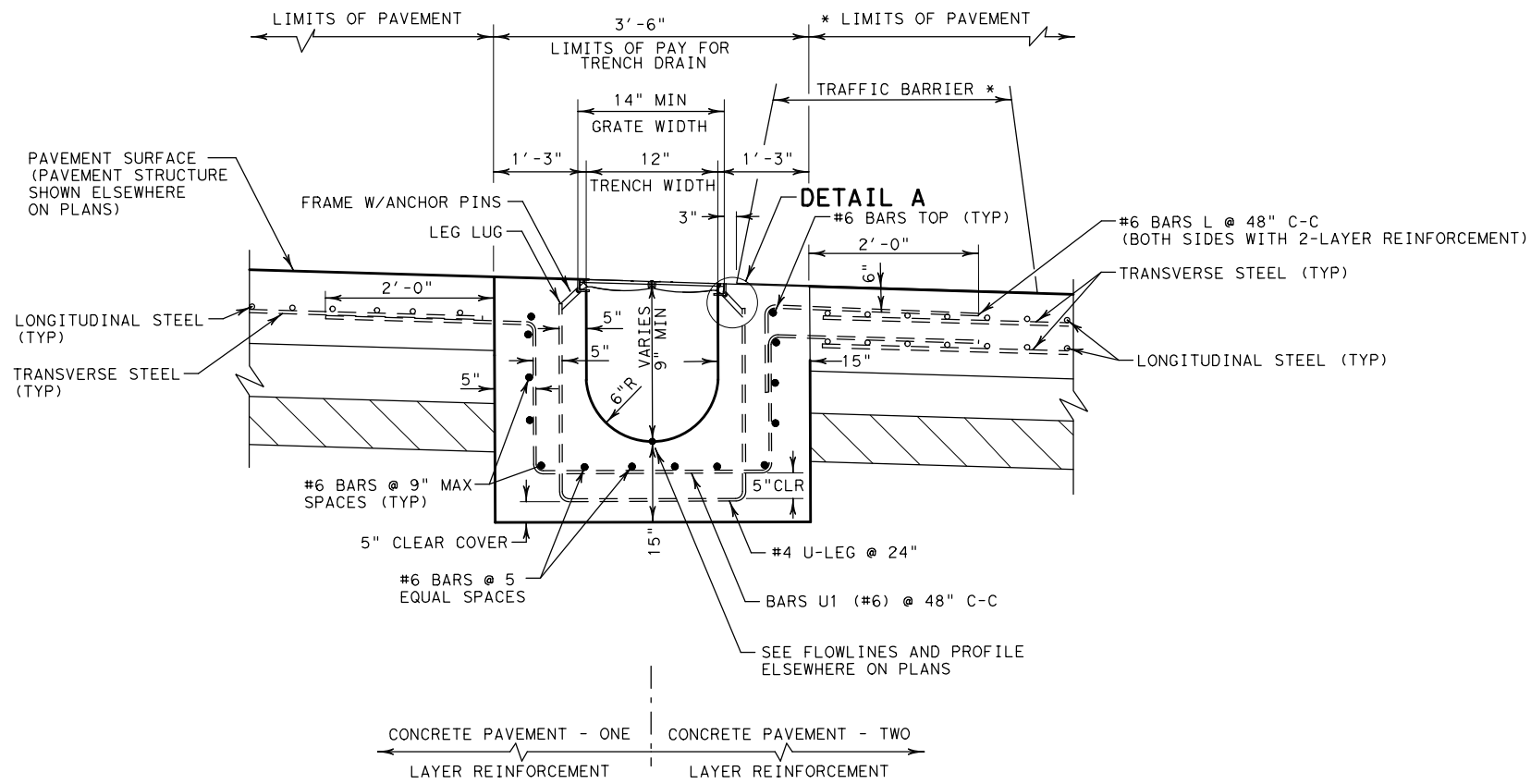
SHEET 1 OF 2 SHEETS

		Fort Worth District Standard	
TRENCH DRAIN (CAST-IN-PLACE) TD-C (FTW)			
ORIGINAL DRAWING: 05/2019	tdc-ftw.dgn	FED. RD. DIV. NO.	PROJECT NO.
DATE	REVISIONS	6	
05/2019	NEW STANDARD	STATE DIST. NO.	COUNTY
11/2020	REVISE JOINT NOMENCLATURE	TEXAS	FTW
		CONT.	SECT. JOB HIGHWAY NO.

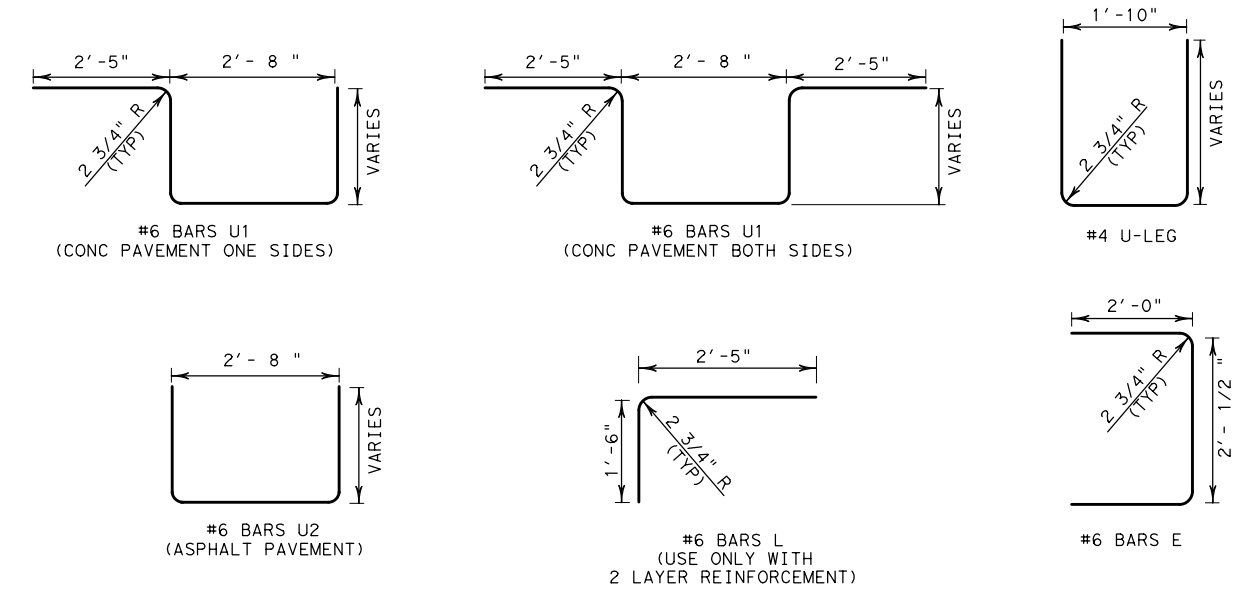
©2020 by Texas Department of Transportation; All Rights Reserved

DISCLAIMER: THIS STANDARD IS GOVERNED BY THE "TEXAS ENGINEERING PRACTICE ACT". THE USE OF THIS STANDARD OF ANY KIND IS MADE BY TXDOT FOR ANY PURPOSE WHATSOEVER. NO WARRANTY OF ANY KIND IS MADE BY TXDOT FOR THE CONVERSION OF THIS STANDARD TO OTHER FORMATS OR FOR INCORRECT RESULTS OR DAMAGES RESULTING FROM ITS USE.

http://www.dot.state.tx.us/ftw/specinfo/standard.htm
 11/6/2020 11:07:58 AM
 P:\PROJECTS\TXDOT\16121\5 FTW Standards Revision\CADD\Modifications in Progress\tdc-ftw.dgn



DETAIL A
 GRATE RETAINER PIN - REMOVABLE
 MINIMUM ONE LOCKING PIN PLACED IN EACH CORNER OF GRATE N.T.S.



		Fort Worth District Standard	
<h2>TRENCH DRAIN (CAST-IN-PLACE) TD-C (FTW)</h2>			
ORIGINAL DRAWING: 05/2019	tdc-ftw.dgn	FED. RD. DIV. NO. 6	PROJECT NO.
DATE	REVISIONS	6	SHEET NO.
05/2019	NEW STANDARD	STATE DIST. NO. TEXAS	COUNTY
11/2020	REVISE JOINT NOMENCLATURE	FTW	
		CONT. SECT. JOB	HIGHWAY NO.