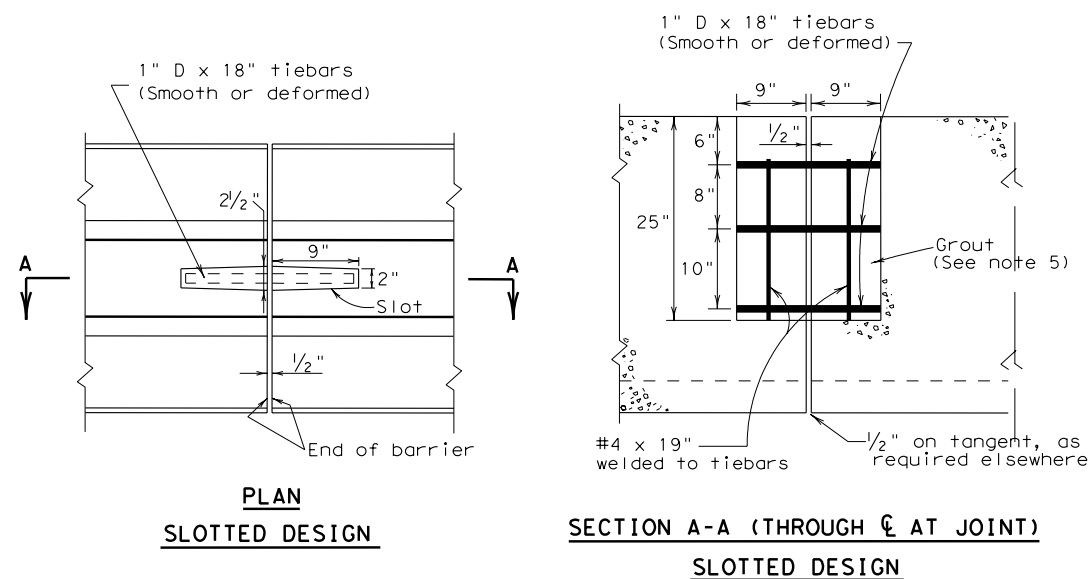


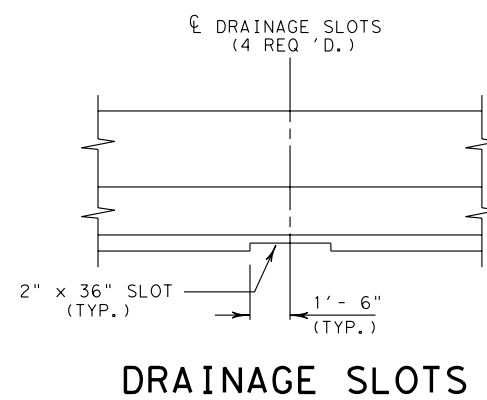
DISCLAIMER:  
 The use of this standard is governed by the "Texas Engineering Practice Act". No warranty of any kind is made by TxDOT for any purpose whatsoever. TxDOT assumes no responsibility for the conversion of this standard to other formats or for incorrect results or damages resulting from its use.

http://www.dot.state.tx.us/ftw/specinfo/standard.htm pctbfw.dgn

LEVELS DISPLAYED	
1	

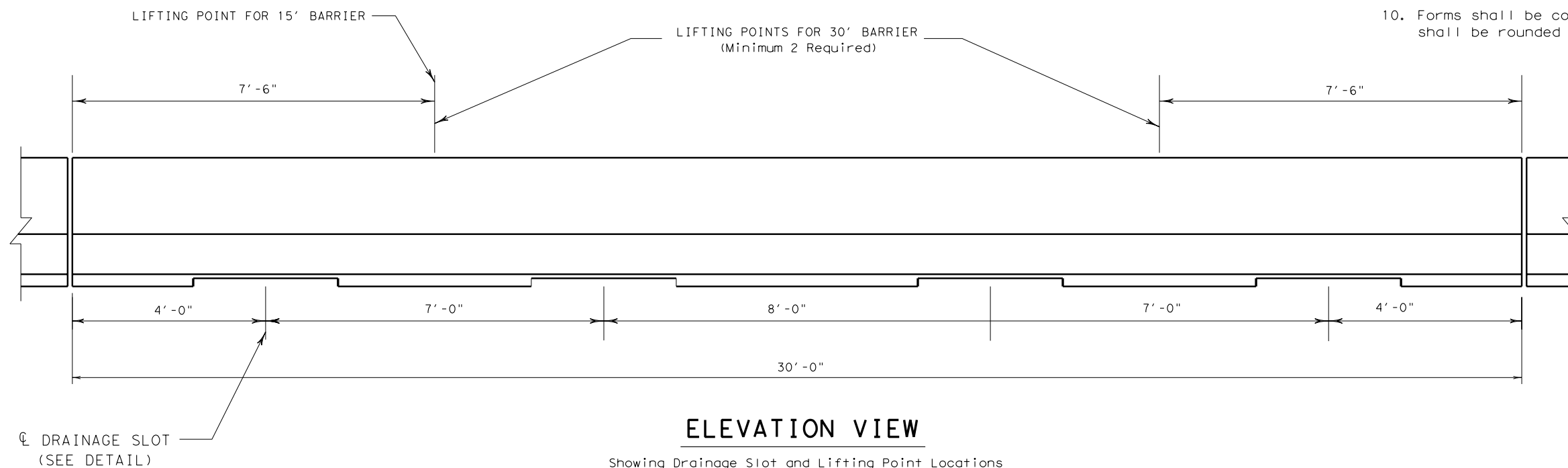


**JOINT DETAIL**



**GENERAL NOTES**

1. Where illumination is to be placed on concrete traffic barrier, a 10-ft. cast-in-place section shall be provided at each light pole location as shown on sheet CTBI(3). Pole, anchor bolts and other illumination details shall be as shown on sheet CTBI (4). Cast-in-place sections shall include a joint as detailed hereon, for the purpose of anchoring the precast CTB.
2. Concrete shall be Class C or H.
3. A minimum of two lifting points shall be used for 30' barrier. A single lifting point may be used for 15' barrier. Lifting devices and attachments shall be as approved by the Engineer.
4. Temporary barrier shall be delineated in accordance with Standard Detail Sheet WZ-(BD).
5. When installed in a permanent roadway location, end connections of the barrier shall be grouted with a mixture of two parts sand and one part cement with enough water to make the mixture plastic. Grouting shall be done in a manner that will assure a smooth surface at the joint.
6. Joints shall not be grouted for temporary barrier locations.
7. The concrete traffic barrier shall receive an ordinary surface finish, unless otherwise specified elsewhere in the plans.
8. Surface finishing and grouting (where required) shall be considered subsidiary to the barrier for payment.
9. Barrier length shall be 30 feet unless otherwise specified elsewhere in the plans. Barrier may be cast in 15 foot lengths with the approval of the Engineer.
10. Forms shall be constructed of steel. Edges of barrier shall be rounded or chamfered as shown on sheet PCTB(2).



**ELEVATION VIEW**

Showing Drainage Slot and Lifting Point Locations

Texas Department of Transportation  
 Fort Worth District

**PRECAST CONCRETE  
 TRAFFIC BARRIER  
 TYPE 2**

**PCTB(1) -03 (FW)**

© TxDOT 2003	DIST	FED REG	PROJECT No.	HIGHWAY
REVISIONS	FTW	6		
1 January 2003	JAT		COUNTY	CONTROL SECT JOB SHEET