

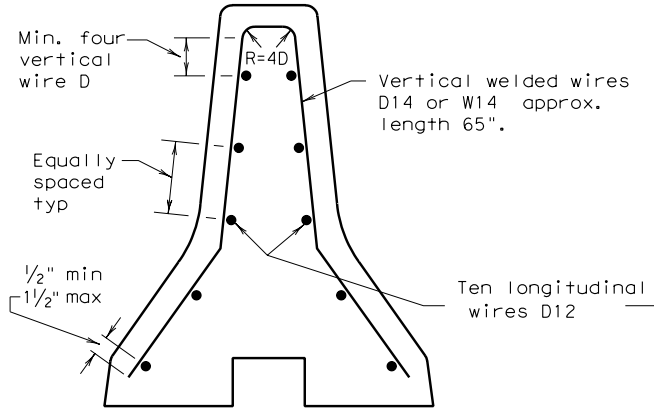
DISCLAIMER: The use of this standard is governed by the "Texas Engineering Practice Act". No warranty of any kind is made by TxDOT for any purpose whatsoever. TxDOT assumes no responsibility for the conversion of this standard to other formats or for incorrect results or damages resulting from its use.

http://www.dot.state.tx.us/ftw/spec/info/standard.htm pctbfw.dgn

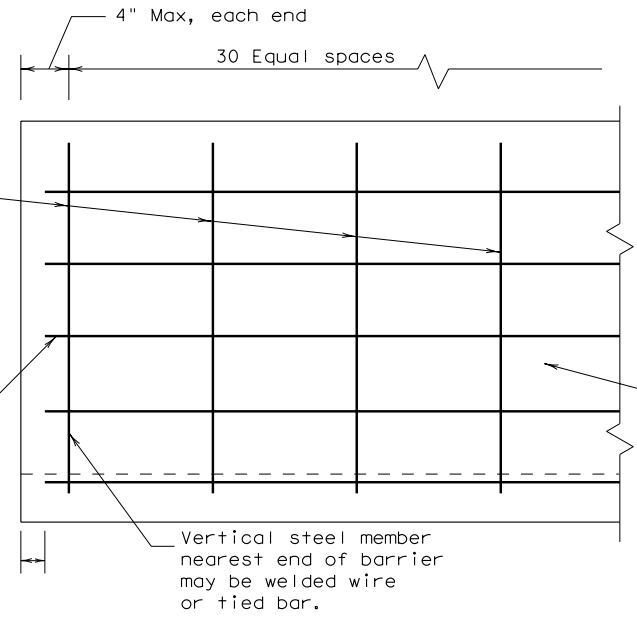
LEVELS DISPLAYED	
1	

Configurations of welded wire fabric other than as shown in the WWF Detail will be permitted when the conditions tabulated below are satisfied.

DESCRIPTION	LONGITUDINAL WIRES	VERTICAL WIRES
1. Wire type	Deformed	Smooth or Deformed
2. Minimum (cumulative total) wire area	1.24 sq. inch	0.133 sq. in. per longitudinal foot
3. No. of wires Minimum Maximum	6 14	31 (For 30' Barrier Section)
4. Bending radius	n/a	Minimum radius = two vertical wire diameters
5. Wire placement a. Top wire b. Bottom wire c. Other wires	Not less than 4 nor more than 5 vertical wire dia. from the upper bends in the vertical wires 4" ( $\pm 1/2$ " ) from bottom of barrier Uniformly and symmetrically spaced along faces of barrier	n/a n/a Maximum spacing 12"
6. Maximum wire size differential	The smaller wire shall have an area of 40% or more of the larger wire.	



END VIEW



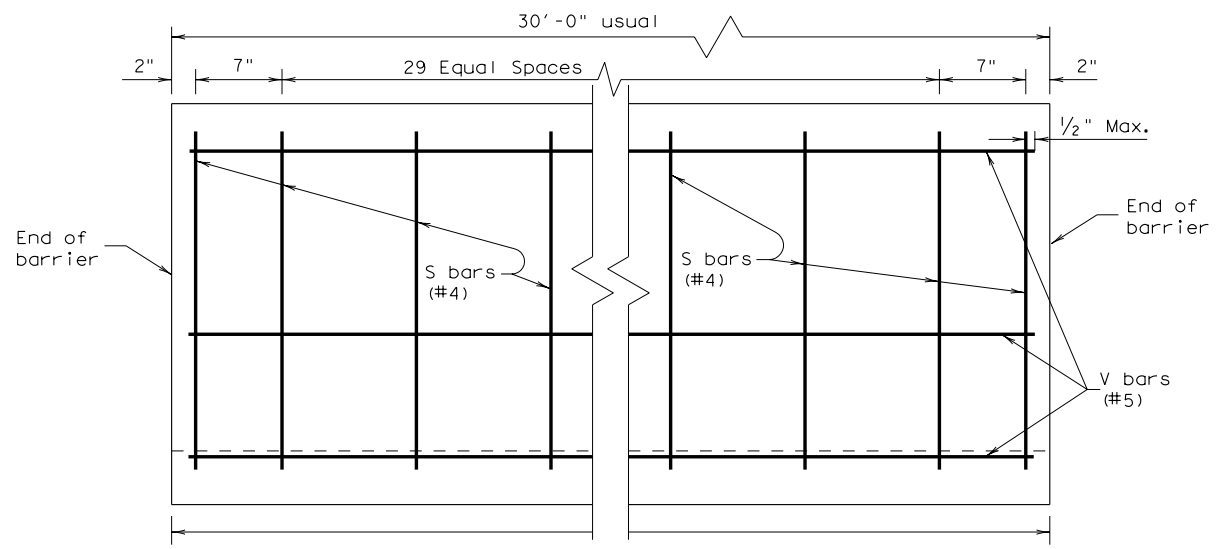
ELEVATION VIEW

Note: Detail shown is for D12 longitudinal wires and D14 or W14 vertical wires. Other size and spacing combinations meeting the tabulated conditions may be used.

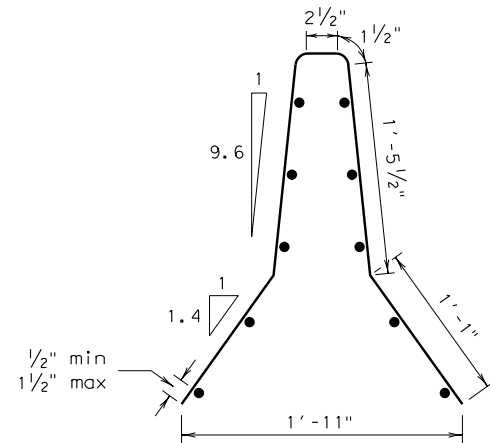
Sufficient welded wire or auxiliary tied bar shall be placed vertically at locations as necessary to provide for cage stability.

GENERAL NOTES

- Concrete shall be Class C or H.
- Where used, rebar reinforcement shall conform to ASTM A-615 (Grade 40).
- Wire fabric shall conform to ASTM A-185 or A-497.
- Barrier length shall be 30 ft.  $\pm$  unless otherwise specified in the plans.
- All concrete, reinforcement, joint connection systems, grout, and etc. as shown are considered as part of the barrier for payment.
- Bar splices for roadway barrier shall be a minimum of 24 times the nominal diameter of the bars.
- The reinforcing cage may be tack welded in lieu of tying.

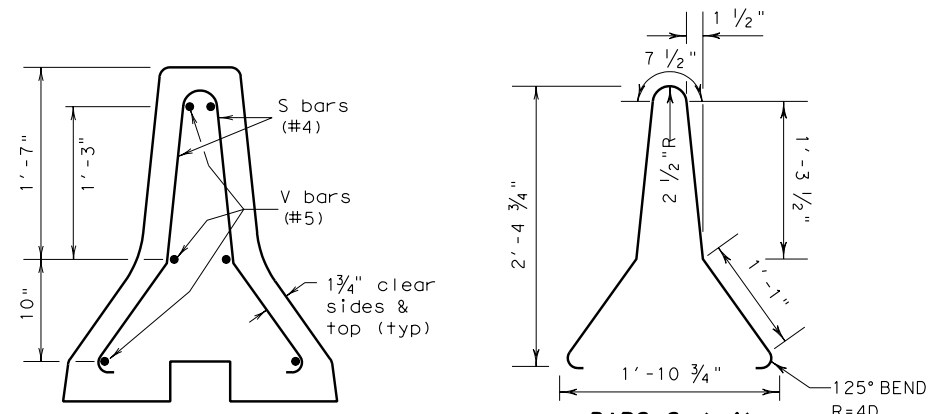


ELEVATION OF BARRIER



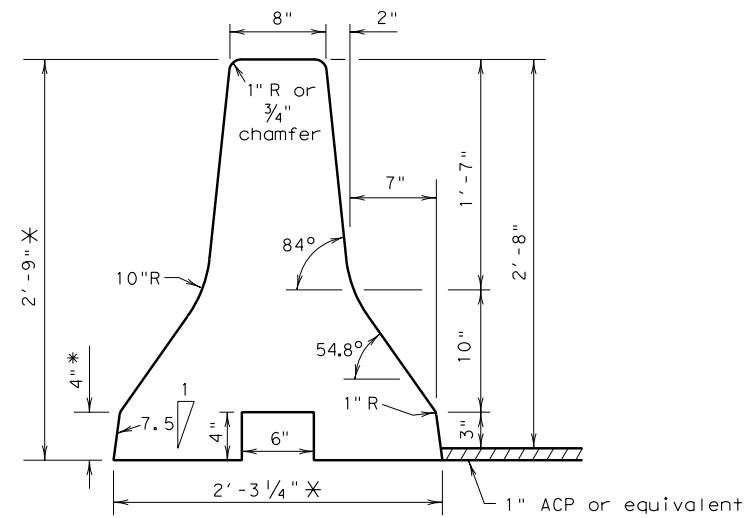
VERTICAL WIRE DETAILS

DETAILS OF WELDED WIRE FABRIC OPTION



SECTION OF BARRIER

DETAILS OF REBAR OPTION



\* When 1" ACP is not used for lateral support, these dimensions shall be adjusted accordingly.

DETAIL OF BARRIER SHAPE

R = Radius  
D = Diameter

# Approximate P.L.F. quantities		
Concrete	CY.	0.112
Rebar	LB.	9.83
Welded wire fabric	LB.	7.06

# For Contractor's information only  
Weight of one 30 ft. unit = Approximately 7 Tons

Texas Department of Transportation  
Fort Worth District

PRECAST CONCRETE  
TRAFFIC BARRIER  
TYPE 2

PCTB(2) -03 (FW)

© TxDOT 2003	DIST	FED REG	PROJECT No.	HIGHWAY
REVISIONS	FTW	6		
① 1/2003 - Bar S detail - JAT	COUNTY	CONTROL	SECT	JOB SHEET