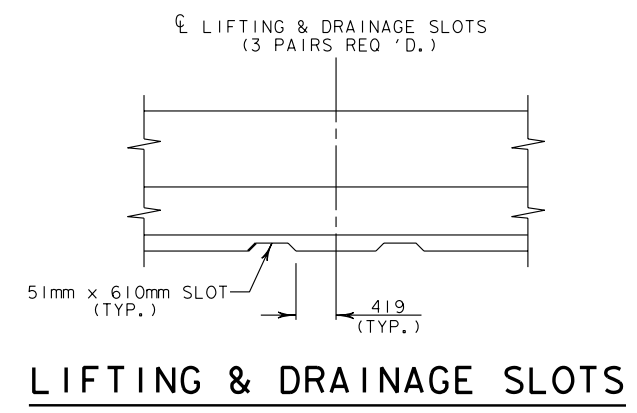
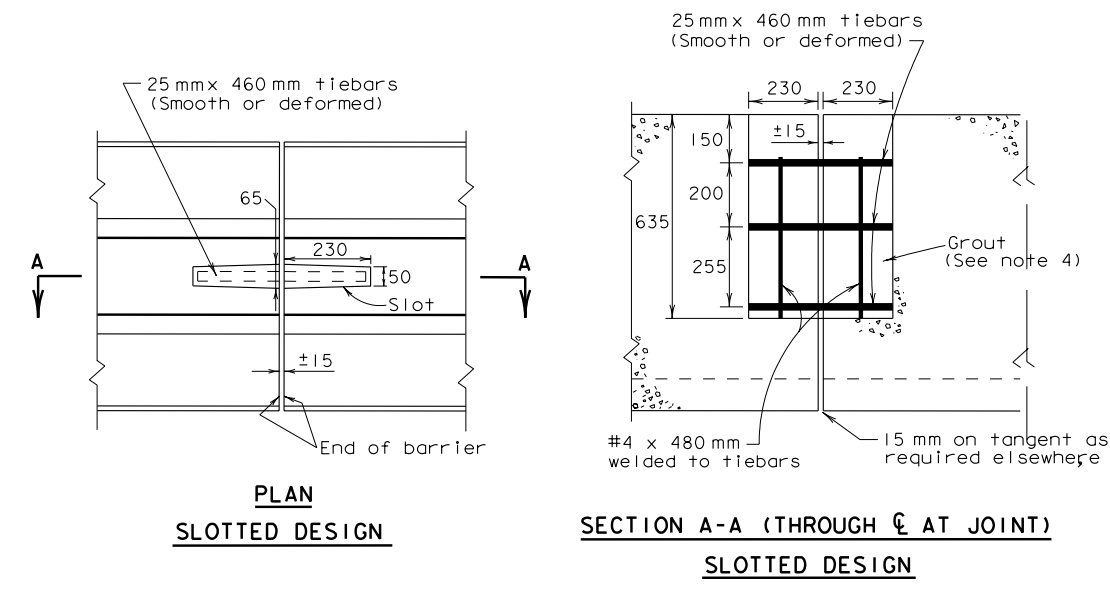


DISCLAIMER:
 The use of this standard is governed by the "Texas Engineering Practice Act". No warranty of any kind is made by TxDOT for any purpose whatsoever. TxDOT assumes no responsibility for the conversion of this standard to other formats or for incorrect results or damages resulting from its use.

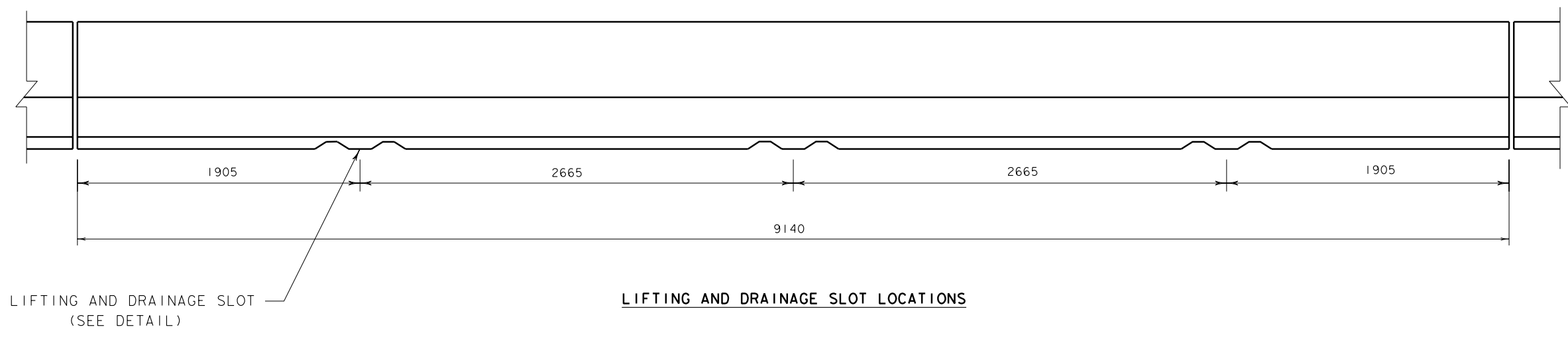
ftp://ftw-tpd-ws13/public/standards/metricstd/pctb/wm.dgn



GENERAL NOTES

1. Concrete shall be class H (f'c 25 MPa)
2. Regardless of the method of handling, barrier section lifting points shall be 1905 mm from the ends of the barrier. Lifting devices and attachments to barrier sections shall be as approved by the Engineer.
3. Temporary barrier shall be delineated in accordance with Standard Detail Sheet WZ-(BD).
4. When installed in a permanent roadway location, end connections of the barrier shall be grouted with a mixture of two parts sand and one part cement with enough water to make the mixture plastic. Grouting shall be done in a manner that will assure a smooth surface at the joint.
5. The joint shall not be grouted for temporary barrier locations.
6. Surface finishing and grouting (where required) shall be considered subsidiary to the barrier for payment.
7. The concrete traffic barrier shall receive an ordinary surface finish, unless otherwise noted elsewhere in the plans.
8. Barrier length shall be 9140 ± unless otherwise specified elsewhere in the plans. Barrier may be cast in 4570 ± segments with the approval of the Engineer.
9. Forms shall be constructed of steel. Edges of barrier shall be rounded or chamfered as shown on sheet PCTB(2).

JOINT DETAIL



PRECAST CONCRETE TRAFFIC BARRIER TYPE 2

PCTB(1) - 00(FW) (M)

R = Radius
 D = Diameter
 All unit-less dimensions are millimeters

FILE#	PCTB100FWM.DGN	DN#	GTH	CK#	GTH	DW#	BGD	CK#	TGM	NEG#
©	TxDOT 1995	DIST	FED REG	FEDERAL AID PROJECT		•		SHEET		
REVISIONS	6	COUNTY		CONTROL	SECT	JOB	HIGHWAY			
1	January 27, 2000	JRT								