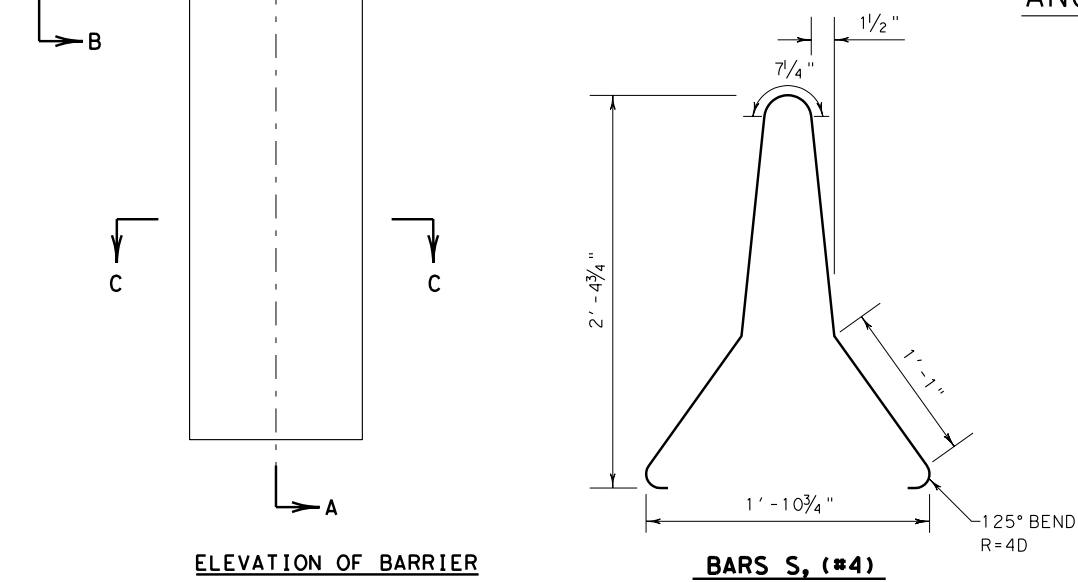
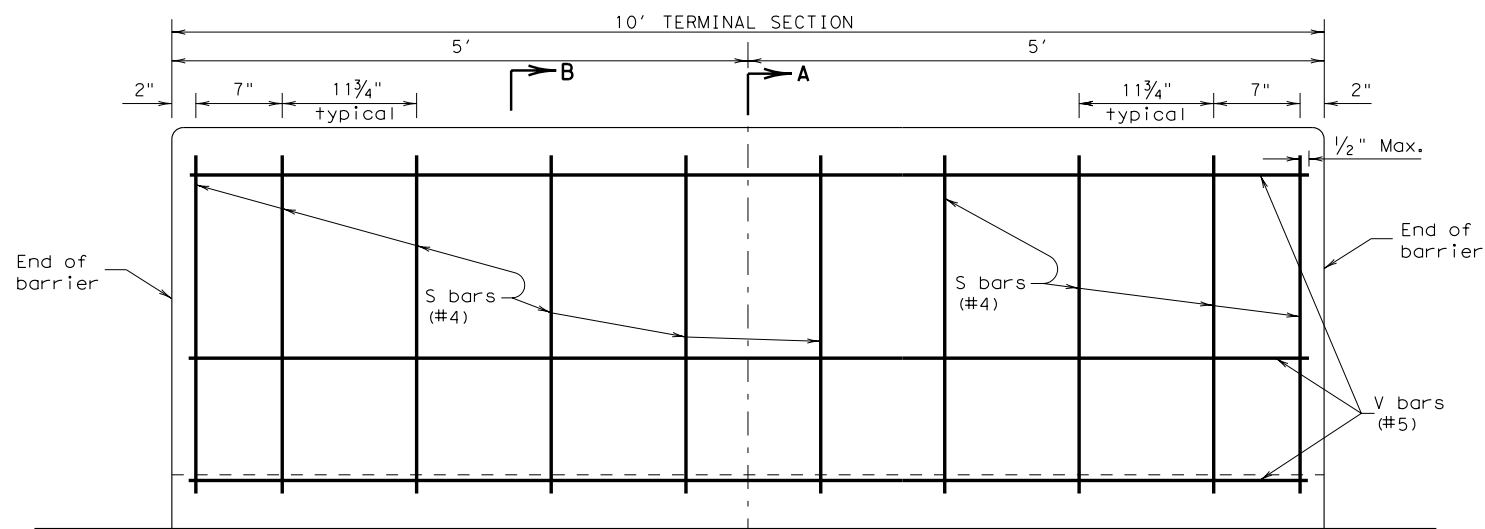
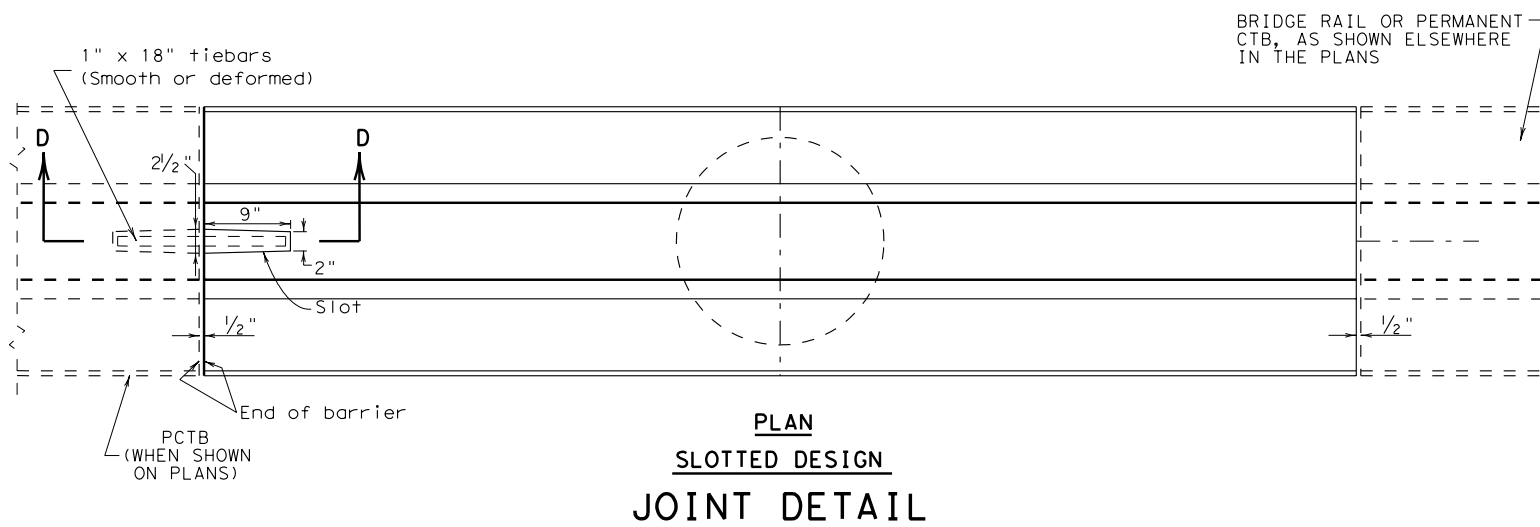


DISCLAIMER: The use of this standard is governed by the "Texas Engineering Practice Act". No warranty of any kind is made by TxDOT for any purpose whatsoever. TxDOT assumes no responsibility for the conversion of this standard to other formats or for incorrect results or damages resulting from its use.

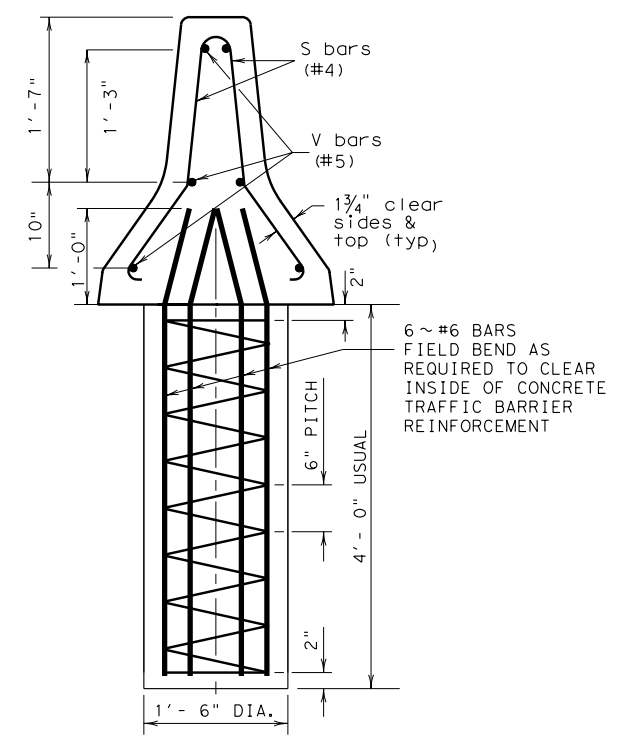
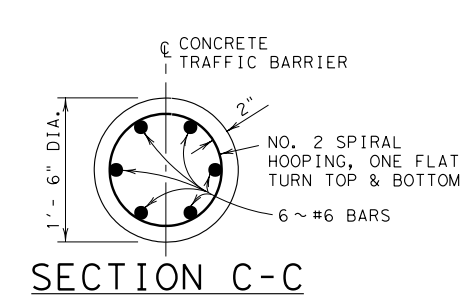
http://www.dot.state.tx.us/ftw/specinfo/standard.htm ctbtsdfw.dgn

LEVELS DISPLAYED	
1	
2	

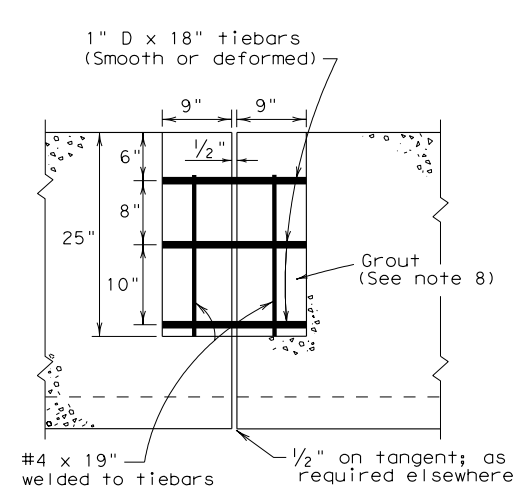


Additional vertical steel shall be provided as necessary to properly position steel and stabilize rebar cage.

FOR CONTRACTORS INFORMATION ONLY		
APPROXIMATE QUANTITIES 10' SECTION		
CONCRETE	CY	1.40
REINFORCING STEEL	LB	135



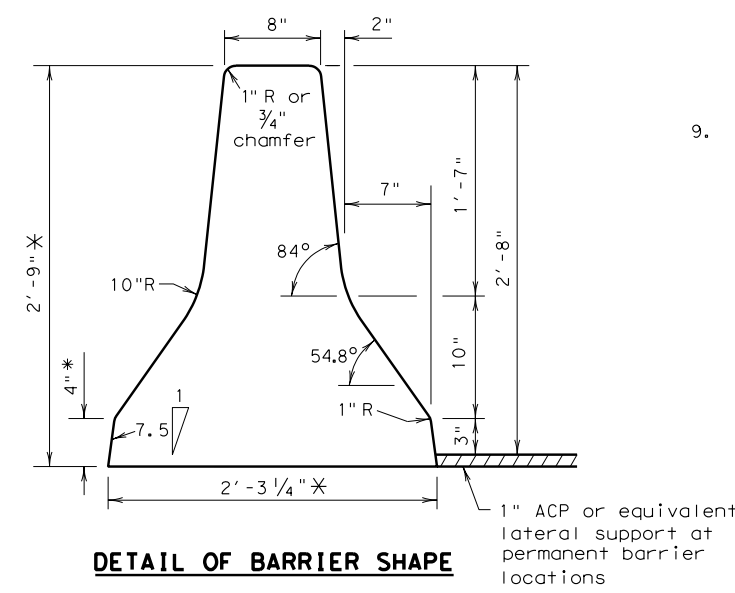
ANCHOR DETAIL - SECTION A-A



SECTION D-D (THROUGH C AT JOINT) SLOTTED DESIGN

GENERAL NOTES

1. WORK ZONE BARRIER DELINEATION SHALL BE IN ACCORDANCE WITH STANDARD DETAIL SHEET WZ-BD.
2. ALL CONCRETE SHALL BE CLASS A, C, OR H.
3. ALL REINFORCING STEEL SHALL CONFORM TO ASTM A-615 (GRADE 40).
4. CHAMFER ENDS AND TOP EDGES 3/4".
5. REINFORCING STEEL AND DRILLED SHAFT ANCHOR SHALL BE INCLUDED IN THE PRICE PAID PER LINEAR FOOT FOR CONCRETE TRAFFIC BARRIER (TERMINAL SECTION).
6. THE CONCRETE MEDIAN BARRIER SHALL RECEIVE AN ORDINARY SURFACE FINISH, UNLESS OTHERWISE NOTED ON THE PLANS.
7. THE REINFORCING CAGE MAY BE TACK WELDED IN LIEU OF TYING.
8. WHEN INSTALLED IN A PERMANENT ROADWAY LOCATION, END CONNECTIONS OF THE BARRIER SHALL BE GROUTED WITH A MIXTURE OF TWO PARTS SAND AND ONE PART CEMENT WITH ENOUGH WATER TO MAKE THE MIXTURE PLASTIC. GROUTING SHALL BE DONE IN A MANNER THAT WILL ASSURE A SMOOTH SURFACE AT THE JOINT.
9. SURFACE FINISHING AND GROUTING (WHEN REQUIRED) SHALL BE CONSIDERED SUBSIDIARY TO THE BARRIER FOR PAYMENT.



DETAIL OF BARRIER SHAPE

\* When 1" ACP is not used for lateral support, these dimensions shall be adjusted accordingly.

SECTION B-B

R = Radius  
D = Diameter

© 2003 by Texas Department of Transportation; all rights reserved

**Texas Department of Transportation**  
Fort Worth District

**PORTABLE CONCRETE TRAFFIC BARRIER TERMINAL SECTION DETAILS**

**PCTB-TSD-03 (FW)**

ORIGINAL-SEPT 2003	DIST	FED REG	FEDERAL AID PROJECT	HIGHWAY
REVISIONS:				
	COUNTY	CONTROL	SECT	JOB SHEET