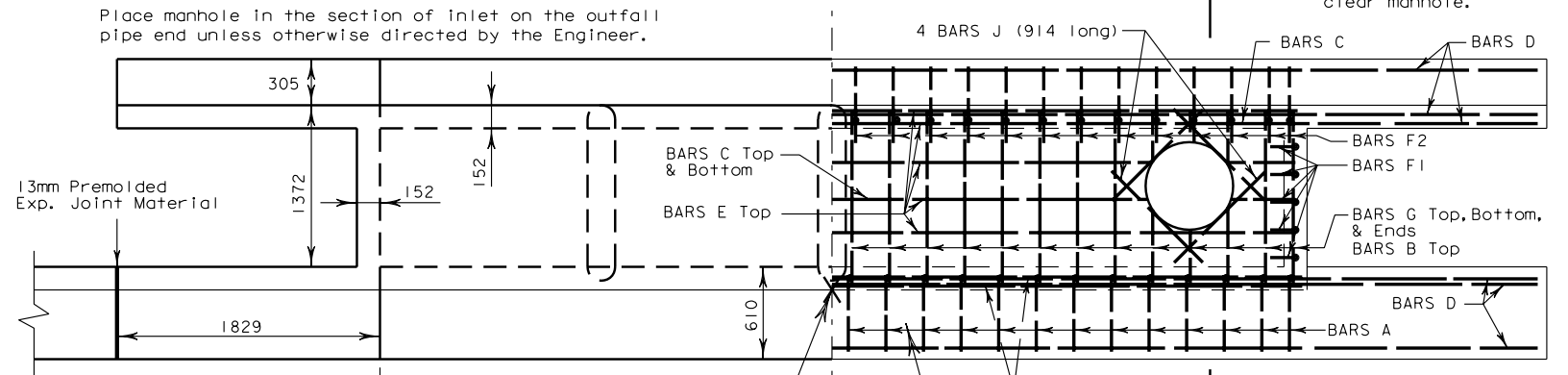


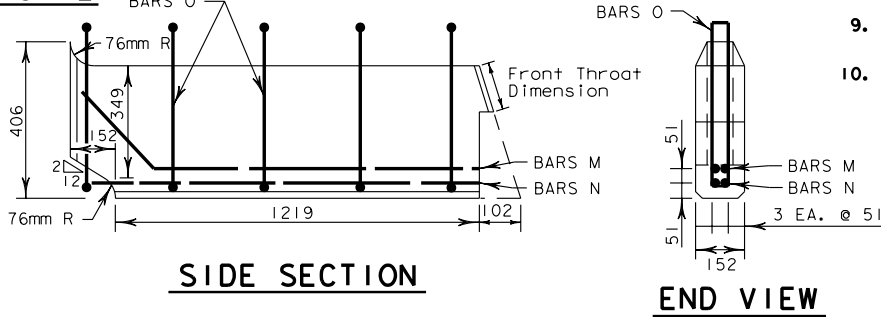
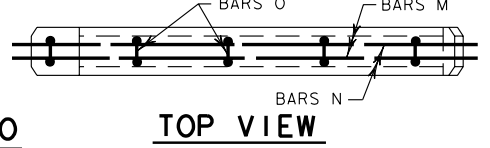
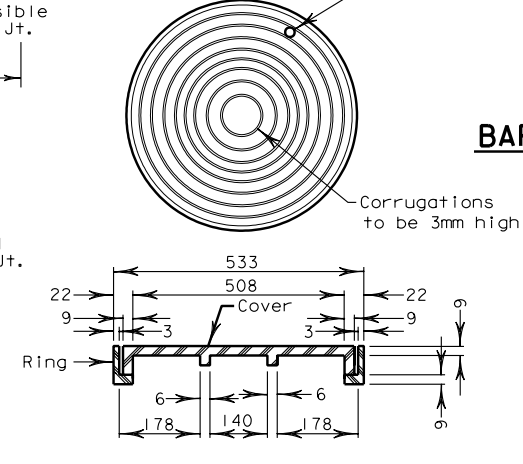
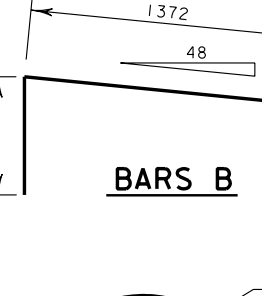
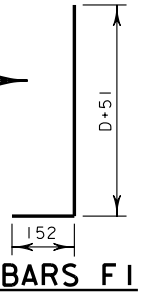
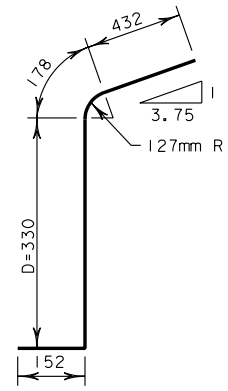
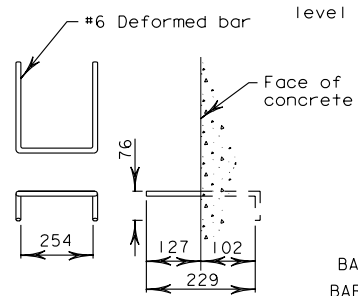
1727 (1525 Opening)	C&E
5080 (1525 Opening)	D
3251 (3050 Opening)	C&E
6604 (3050 Opening)	D
4775 (4570 Opening)	C&E
8125 (4570 Opening)	D
6299 (6095 Opening)	C&E
9652 (6095 Opening)	D

BARS C, D, & E

1525mm Street Inlet 'D'=1220											
Bars	A	B	C	D	E	F1*	F2*	G	J		
Number	10	10	12	6	7	16	10	34	4		
Size	#4	#4	#4	#4	#6	#4	#4	#4	#4		
Spacing	191	191	191	Shown	—	191	191	191	—		
Length	1651	1930	1727	1651	1930	6299	3251	1422	1346	1422	914
Weight	16	19	21	30	27	23	13	48	4		
*Variable with Depth						Totals	Steel=201 kg	Conc.=2.87m ³			
For Depth over 1220						Steel=191 kg + 68.8 kg/m	Conc.=2.46m ³ + 0.928 m ³ /m				



Note: 305mm dimension for back opening is maximum for inlet on grade. Back apron is to be level at all locations.



3050mm Street Inlet 'D'=1220 (Includes 1 Transverse Beam)												
Bars	M	N	O	A*	B	C	D	E	F1*	F2*	G	J
Number	2	2	5	18	18	12	6	7	16	18	48	4
Size	#4	#4	#4	#4	#4	#4	#4	#6	#4	#4	#4	#4
Spacing	—	—	305	191	191	191	Shown	—	191	191	191	—
Length	1803	1905	1321	1651	1930	3251	6604	3251	1422	1346	1422	914
Weight	4	4	6	29	34	39	39	51	23	24	68	4
*Variable with Depth						Totals	Steel=324kg	Conc.=4.28m ³				
For Depth over 1220						Steel=315kg + 99.7 kg/m	Conc.=3.86m ³ + 1.395 m ³ /m					

4575mm Street Inlet 'D'=1220 (Includes 2 Transverse Beams)												
Bars	M	N	O	A*	B	C	D	E	F1*	F2*	G	J
Number	4	4	10	26	26	12	6	7	16	26	64	4
Size	#4	#4	#4	#4	#4	#4	#4	#6	#4	#4	#4	#4
Spacing	—	—	305	191	191	191	Shown	—	191	191	191	—
Length	1803	1905	1321	1651	1930	4775	8128	4775	1422	1346	1422	914
Weight	7	8	13	43	50	57	48	75	23	35	91	4
*Variable with Depth						Totals	Steel=452kg	Conc.=5.66m ³				
For Depth over 1220						Steel=443kg + 139.7kg/m	Conc.=5.26m ³ + 1.859 m ³ /m					

6095 Street Inlet 'D'=1220 (Includes 3 Transverse Beams)												
Bars	M	N	O	A*	B	C	D	E	F1*	F2*	G	J
Number	6	6	15	34	34	12	6	7	16	34	80	4
Size	#4	#4	#4	#4	#4	#4	#4	#6	#4	#4	#4	#4
Spacing	—	—	305	191	191	191	Shown	—	191	191	191	—
Length	1803	1905	1321	1651	1930	6299	9652	6299	1422	1346	1422	914
Weight	11	11	20	56	65	75	57	98	23	45	113	4
*Variable with Depth						Totals	Steel=577kg	Conc.=7.07m ³				
For Depth over 1220						Steel=568kg + 164.2kg/m	Conc.=6.66m ³ + 2.323m ³ /m					

GENERAL NOTES

- All concrete shall be Class "A" concrete.
- Chamfer all exposed corners 19mm except where otherwise noted.
- Dimensions related to reinforcing steel are to the center of bars.
- Field cut and bend bars as necessary to accommodate storm sewer pipe.
- Cast iron ring and cover shall conform to TxDOT Item 471.
- Any depth other than those shown may be used wherever deemed necessary. Quantities for other depths falling within the limits of the table may be found by interpolation.
- During Stage I construction, inlets will not be constructed above subgrade elevation unless so permitted by the Engineer.
- A temporary wood cover shall be installed after Stage 1 is completed and will remain in place until Stage 2 begins.
- Control point coordinates are to the face of the curb at a distance of L/2 from the end of the inlet.
- All dimensions shown are in millimeters unless otherwise shown.

CONCRETE QUANTITY REDUCTION TABLE

Pipe Diameter (mm)	Reduction One Pipe (m ³)
375	0.03
450	0.04
525	0.06
600	0.07
675	0.08
750	0.11
825	0.13
900	0.15
1050	0.20
1200	0.27

REVISIONS:

Texas Department of Transportation

OPEN-BACK STREET INLET (305mm BACK OPENING)

SI-5 (FW) (M)

ORIG DATE: MAR. 1996	DESIGN: CHECKED: DRAWN: CHECKED:	FED. REG. 6	STATE TEXAS	FEDERAL AID PROJ NO.	HIGHWAY
		DISTRICT	COUNTY	CONTROL SECTION	JOB SHEET

© 1999 by Texas Department of Transportation. All rights reserved.

/public/mctstd/si5fw.dgn