

Opening	Bar
1727mm (1525mm Opening)	C&E
5080mm (1525mm Opening)	D
3251mm (3050mm Opening)	C&E
6604mm (3050mm Opening)	D
4775mm (4570mm Opening)	C&E
8128mm (4570mm Opening)	D
6299mm (6095mm Opening)	C&E
9652mm (6095mm Opening)	D

**BARS C, D, & E**

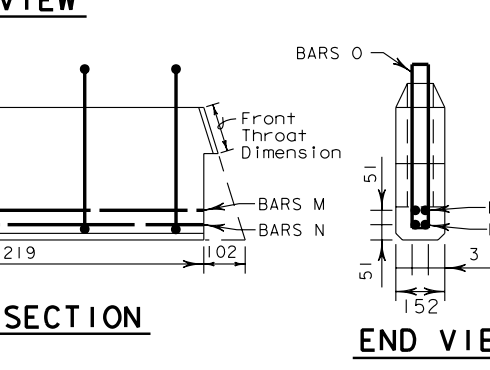
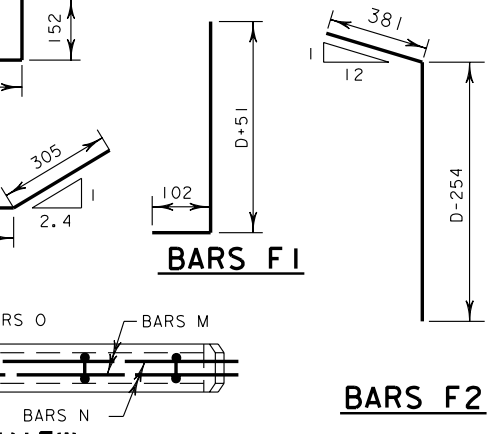
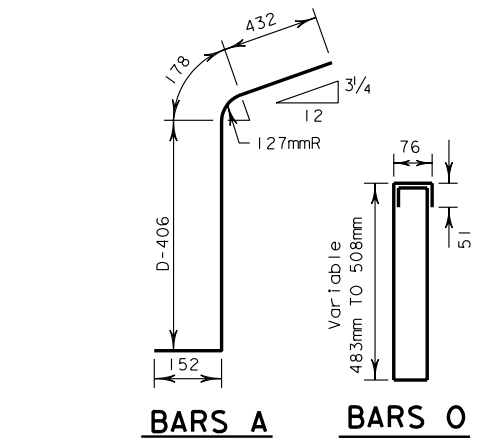
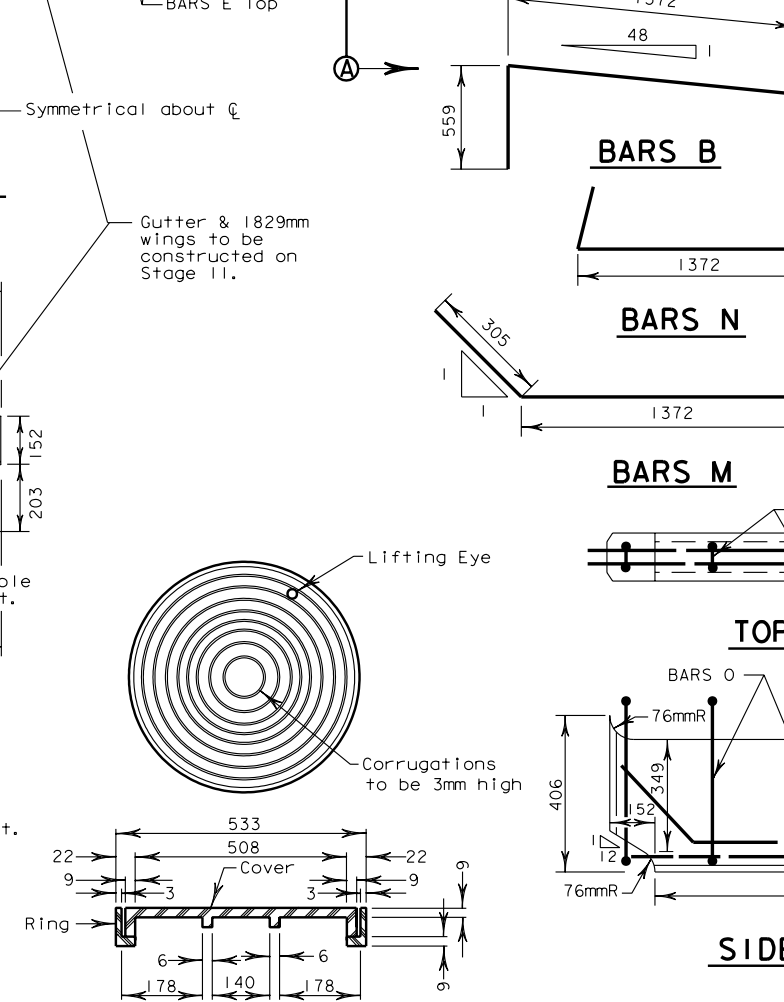
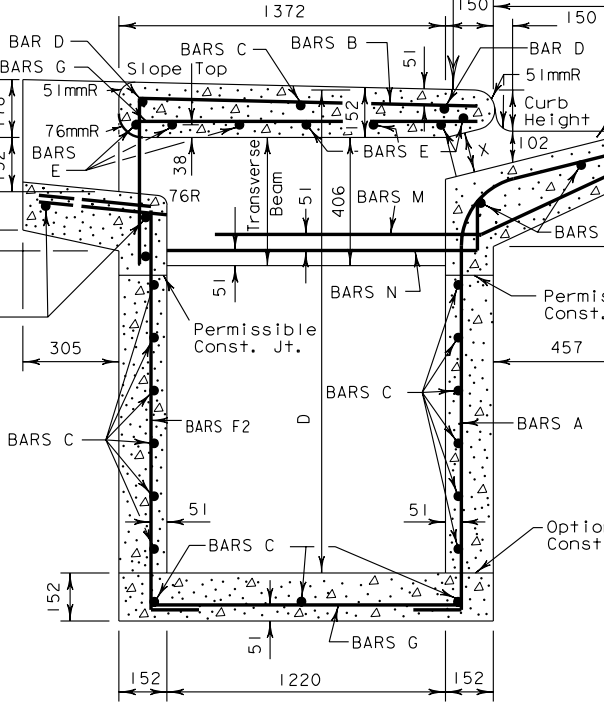
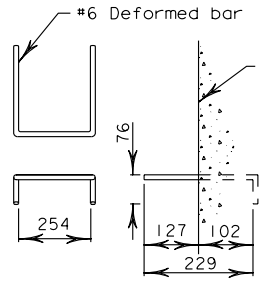
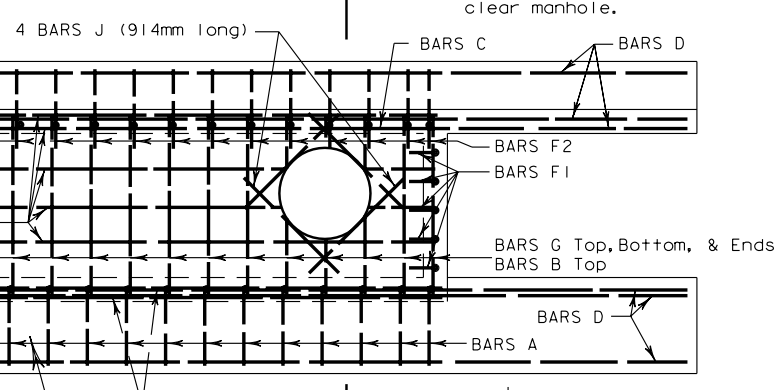
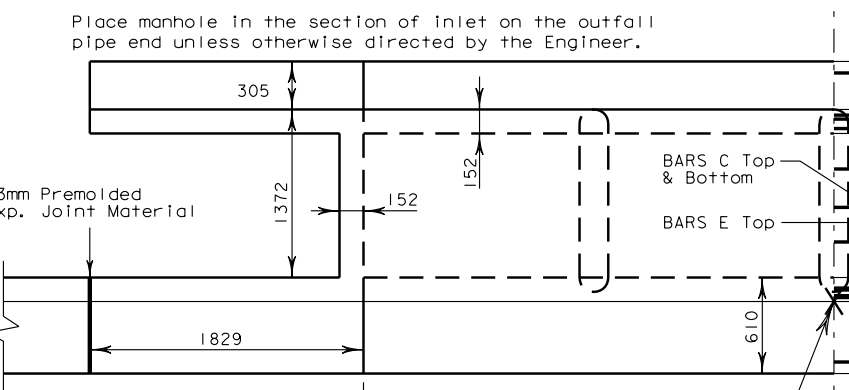
1525mm Street Inlet 'D'=1220mm												
Bars	M	N	O	A*	B	C	D	E	F1*	F2*	G	J
Number	-	-	-	10	10	12	6	7	16	10	34	4
Size	-	-	-	#4	#4	#4	#4	#6	#4	#4	#4	#4
Spacing (mm)	-	-	-	191	191	191	SHOWN	-	191	191	191	-
Length	125mm CURB	-	-	1651	1930	1727	5080	1727	1422	1499	1422	914
	150mm CURB	-	-	1626	1930	1727	5080	1727	1422	1499	1422	914
	175mm CURB	-	-	1600	1930	1727	5080	1727	1422	1499	1422	914
	200mm CURB	-	-	1575	1930	1727	5080	1727	1422	1499	1422	914
Weight (kg)	-	-	-	16	19	20	30	27	23	15	48	4
Totals	125-200mm CURB	Steel=203 kg							Conc. = 2.84m <sup>3</sup>			
Depth over 1220mm	125-200mm CURB	Steel=203 kg + 68.8 kg/m							Conc. = 2.84 m <sup>3</sup> + 0.928 m <sup>3</sup> /m			

3050mm Street Inlet 'D'=1220mm (Includes 1 Transverse Beam)													
Bars	M	N	O	A*	B	C	D	E	F1*	F2*	G	J	
Number	2	2	5	18	18	12	6	7	16	18	48	4	
Size	#4	#4	#4	#4	#4	#4	#4	#6	#4	#4	#4	#4	
Spacing (mm)	-	-	305	191	191	191	-	-	191	191	191	-	
Length	125mm CURB	1829	1676	1321	1651	1930	3251	6604	3251	1422	1499	1422	914
	150mm CURB	1829	1676	1321	1626	1930	3251	6604	3251	1422	1499	1422	914
	175mm CURB	1829	1676	1321	1600	1930	3251	6604	3251	1422	1499	1422	914
	200mm CURB	1829	1676	1321	1575	1930	3251	6604	3251	1422	1499	1422	914
Weight (kg)	4	3	6	3	34	39	39	51	23	27	68	4	
Totals	125-200mm CURB	Steel=328 kg							Conc. = 4.24m <sup>3</sup>				
Depth over 1220mm	125-200mm CURB	Steel=328 kg + 100.5 kg/m							Conc. = 4.24m <sup>3</sup> + 1.395 m <sup>3</sup> /m				

4570mm Street Inlet 'D'=1220mm (Includes 2 Transverse Beams)													
Bars	M	N	O	A*	B	C	D	E	F1*	F2*	G	J	
Number	4	4	10	26	26	12	6	7	16	26	64	4	
Size	#4	#4	#4	#4	#4	#4	#4	#6	#4	#4	#4	#4	
Spacing (mm)	-	-	305	191	191	191	SHOWN	-	191	191	191	-	
Length	125mm CURB	1829	1676	1321	1651	1930	4775	8128	4775	1422	1499	1422	914
	150mm CURB	1829	1676	1321	1626	1930	4775	8128	4775	1422	1499	1422	914
	175mm CURB	1829	1676	1321	1600	1930	4775	8128	4775	1422	1499	1422	914
	200mm CURB	1829	1676	1321	1575	1930	4775	8128	4775	1422	1499	1422	914
Weight (kg)	8	7	13	4	50	57	49	75	23	39	91	4	
Totals	125-200mm CURB	Steel=456 kg							Conc. = 5.64m <sup>3</sup>				
Depth over 1220mm	125-200mm CURB	Steel=456 kg + 139.7 kg/m							Conc. = 5.64 m <sup>3</sup> + 1.859 m <sup>3</sup> /m				

6095mm Street Inlet 'D'=1220mm (Includes 3 Transverse Beams)													
Bars	M	N	O	A*	B	C	D	E	F1*	F2*	G	J	
Number	6	6	15	34	34	12	6	7	16	34	80	4	
Size	#4	#4	#4	#4	#4	#4	#4	#6	#4	#4	#4	#4	
Spacing (mm)	-	-	305	191	191	191	SHOWN	-	191	191	191	-	
Length	125mm CURB	1829	1676	1321	1651	1930	6299	9652	6299	1422	1499	1422	914
	150mm CURB	1829	1676	1321	1626	1930	6299	9652	6299	1422	1499	1422	914
	175mm CURB	1829	1676	1321	1600	1930	6299	9652	6299	1422	1499	1422	914
	200mm CURB	1829	1676	1321	1575	1930	6299	9652	6299	1422	1499	1422	914
Weight (kg)	12	10	20	6	65	75	58	98	23	51	113	4	
Totals	125-200mm CURB	Steel=584 kg							Conc. = 7.04m <sup>3</sup>				
Depth over 1220mm	125-200mm CURB	Steel=584 kg + 164.1 kg/m							Conc. = 7.04 m <sup>3</sup> + 2.323 m <sup>3</sup> /m				

- \*Variable with Depth
- GENERAL NOTES**
- All concrete shall be Class "A" concrete.
  - Chamfer all exposed corners 19mm except where otherwise noted.
  - Dimensions related to reinforcing steel are to the center of bars.
  - Field cut and bend bars as necessary to accommodate storm sewer pipe.
  - Cast iron ring and cover shall conform to TxDOT Item 471.
  - Any depth other than those shown may be used wherever deemed necessary. Quantities for other depths falling within the limits of the table may be found by interpolation.
  - During Stage I construction, inlets will not be constructed above subgrade elevation unless so permitted by the Engineer.
  - A temporary wood cover shall be installed after Stage I is completed and will remain in place until Stage 2 begins.
  - Control point coordinates are to the face of the curb at a distance of L/2 from the end of the inlet.
  - All dimensions shown are in millimeters unless otherwise shown.



NOTE: Bars "B" Form Gate For Back Opening

CONCRETE QUANTITY REDUCTION TABLE	
Pipe Diameter (mm)	Reduction One Pipe (m <sup>3</sup> )
375	0.03
450	0.04
525	0.06
600	0.07
675	0.08
750	0.11
825	0.13
900	0.15
1050	0.20
1200	0.27

REVISONS:

Texas Department of Transportation

**OPEN-BACK STREET INLET (152mm BACK OPENING)**

SI-8 (FW) (M)

© 1999 by Texas Department of Transportation  
0121 418-2006, all rights reserved.

ORIG DRAW DATE:	DESIGN:	FED. REG.	STATE	FEDERAL AID PROJ NO.	HIGHWAY
APR. 1996	CHECKED:	6	TEXAS		
	DRAWN:	DISTRICT	COUNTY	CONTROL SECTION	JOB SHEET
	CHECKED:	FTW			

7Pub11C:\netstd\sl18fw.m.dgn