



# PUBLIC MEETING

I-45 South (Gulf Freeway)

From NASA 1 Bypass to South of FM 518

October 6, 2015

# PURPOSE OF THE MEETING

- Open House – No formal presentation will be made
- Display the proposed design changes
- Obtain feedback from the public
- Project team to answer any questions



# Federal Environmental Laws

The environmental review, consultation, and other actions required by applicable Federal environmental laws for this project are being, or have been carried-out by TxDOT pursuant to 23 U.S.C. 327 and a Memorandum of Understanding dated December 16, 2014, and Executed by FHWA and TxDOT.

La revision ambiental, consultas, y otras acciones requeridas por las leyes ambientales federales aplicables a este proyecto estan siendo o han sido, llevadas a cabo por TxDOT en virtud de 23 U.S.C. 327 y un Memorandum de Entendimiento con Fecha de 16 de diciembre 2014, y ejecutado por FHWA y TxDOT.



# Project Purpose & Need

## NEED:

- Roadway floods during rain events
- Decreased mobility due to congested lanes, ramps, and need for additional turn lanes (With traffic congestion anticipated to increase in the future)
- Facility currently has no sidewalks or bicycle facilities & there are significant commercial shopping centers in the project area
- Need for improved hurricane evacuation

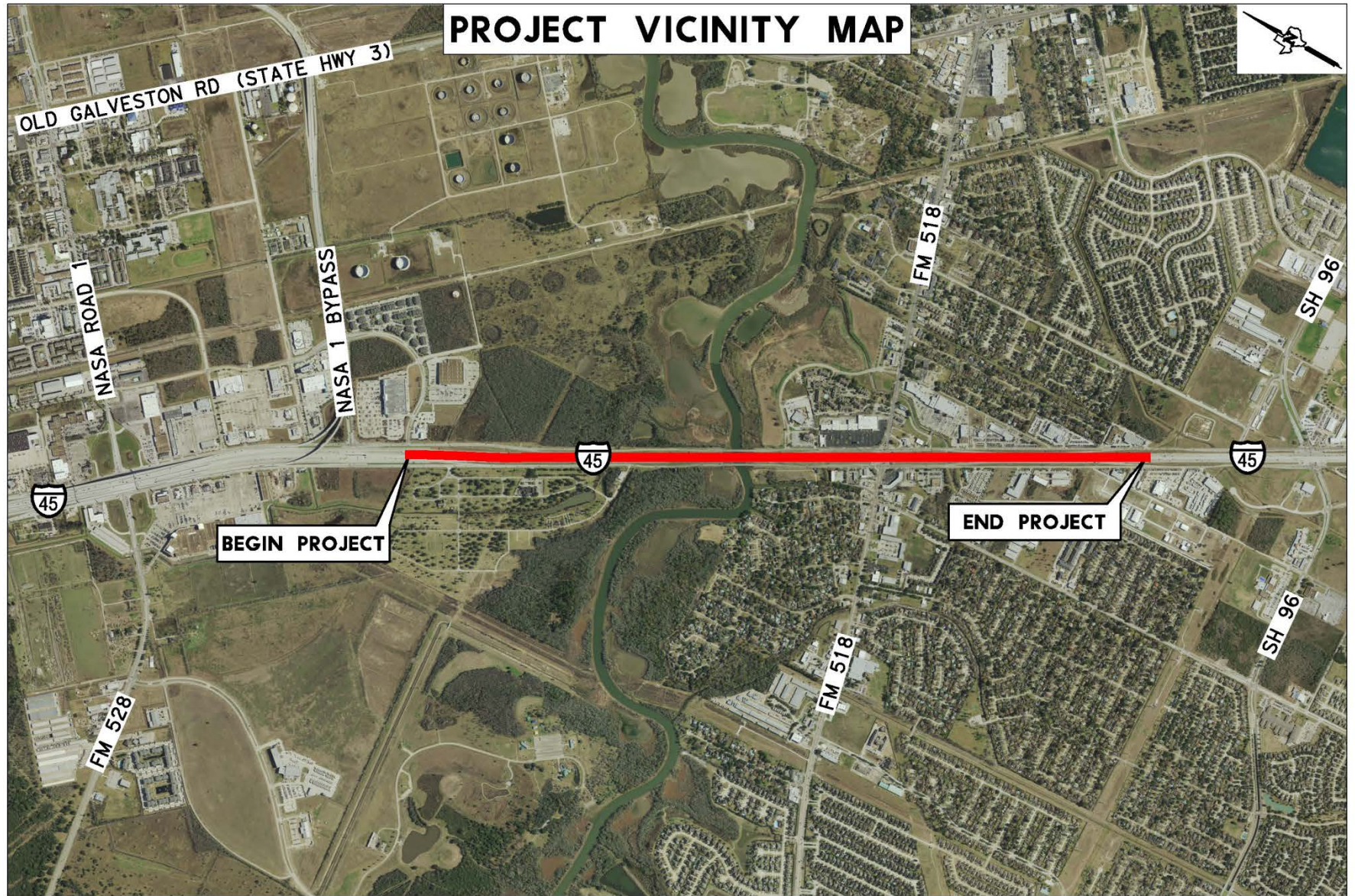
## PURPOSE:

- Reduce roadway flooding
- Improve mobility & reduce congestion by constructing additional lanes, ramps and turn lanes
- Facilitate bicycle/pedestrian activity by constructing sidewalks & shared-use lanes to accommodate bicyclists
- Facilitate hurricane evacuation by providing additional lanes, ramps, & the extension of the Express Lanes south of NASA 1 Bypass



# I-45 South (Gulf Frwy), from NASA 1 Bypass to South of FM 518

## PROJECT VICINITY MAP



# Project History/Design Changes

## Project History

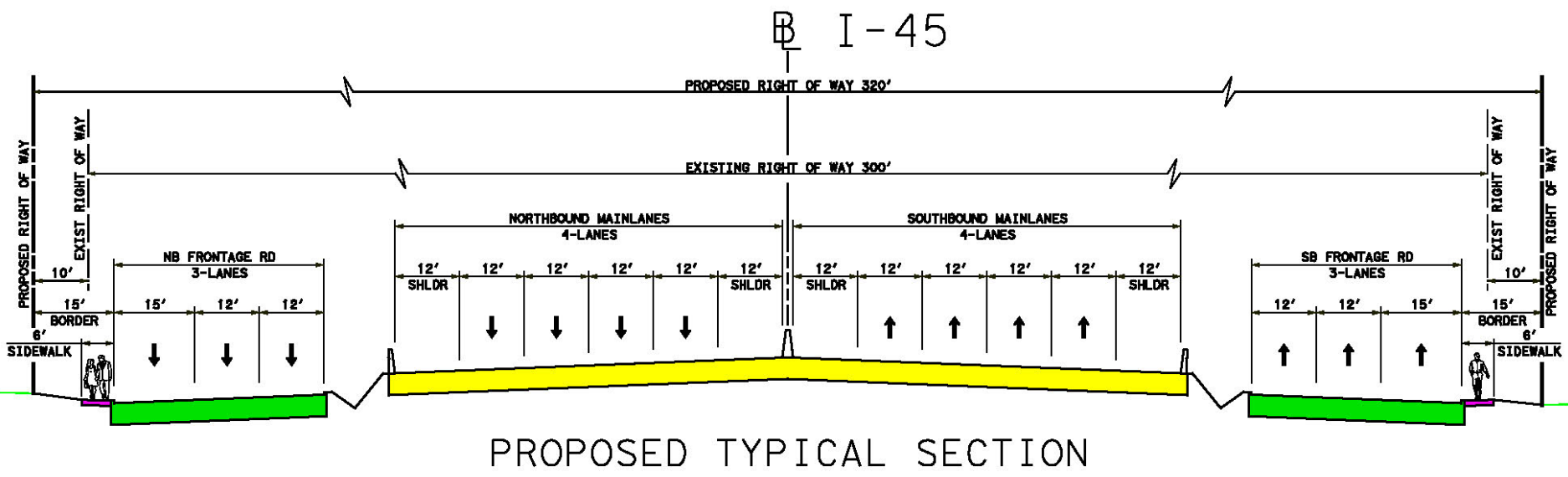
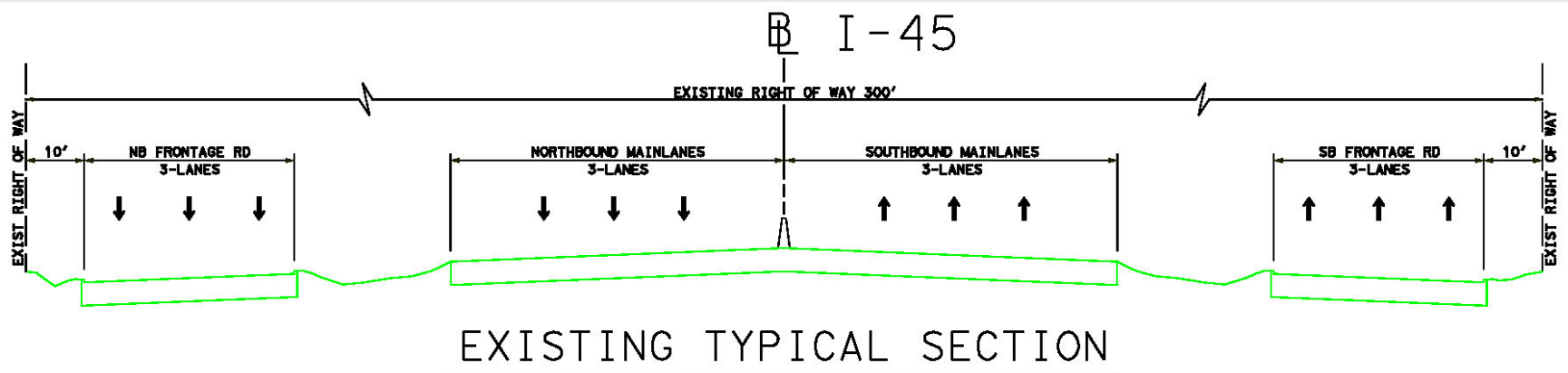
- Since the Federal Highway Administration (FHWA) issued a Finding of No Significant Impact (FONSI) on February 9, 2006, continuing project development efforts have identified the need for design changes.

## Design Changes

- The proposed changes include:
  - Reversing & braiding the northbound entrance and exit ramps
  - Widening the northbound exit ramp to 2-lanes
  - Lengthening the Clear Creek frontage road bridges
  - Construction of detention ponds



# I-45 South (Gulf Frwy), from NASA 1 Bypass to South of FM 518



# PUBLIC MEETING COMMENTS

All comments must be submitted by October 20, 2015.  
Comments may be provided tonight at this Public Meeting, by  
mail, by email, or on-line.

Submit Comments **TONIGHT:**  
In the Comment Box

Submit Comments by **MAIL** to:  
TxDOT Houston District  
Attn: Director of Project Development  
P.O. Box 1386  
Houston, Texas 77251-1386

Submit Comments **ELECTRONICALLY** by:

**EMAIL** to:

[HOU-PIOWebMail@txdot.gov](mailto:HOU-PIOWebMail@txdot.gov)

**OR**

<http://www.txdot.gov/inside-txdot/get-involved/about/hearings-meetings.html>





# PROPOSED SCHEDULE\*

- **Public Meeting** **October 6, 2015**
- **Anticipated Environmental Decision** **Mid 2016**
- **Anticipated Right of Way Acquisition** **Begin Early 2016**
- **Anticipated Construction Begin** **Mid 2017**
  
- **Estimated Construction Cost - \$80M**

\* All dates are approximate and subject to change.

