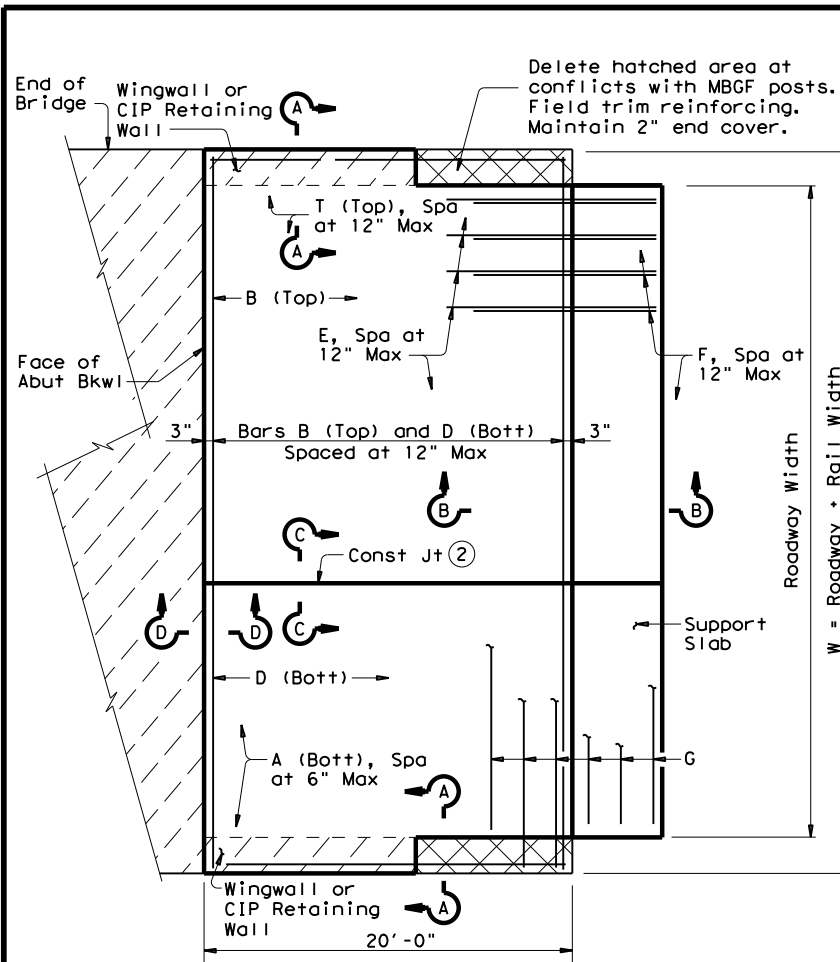
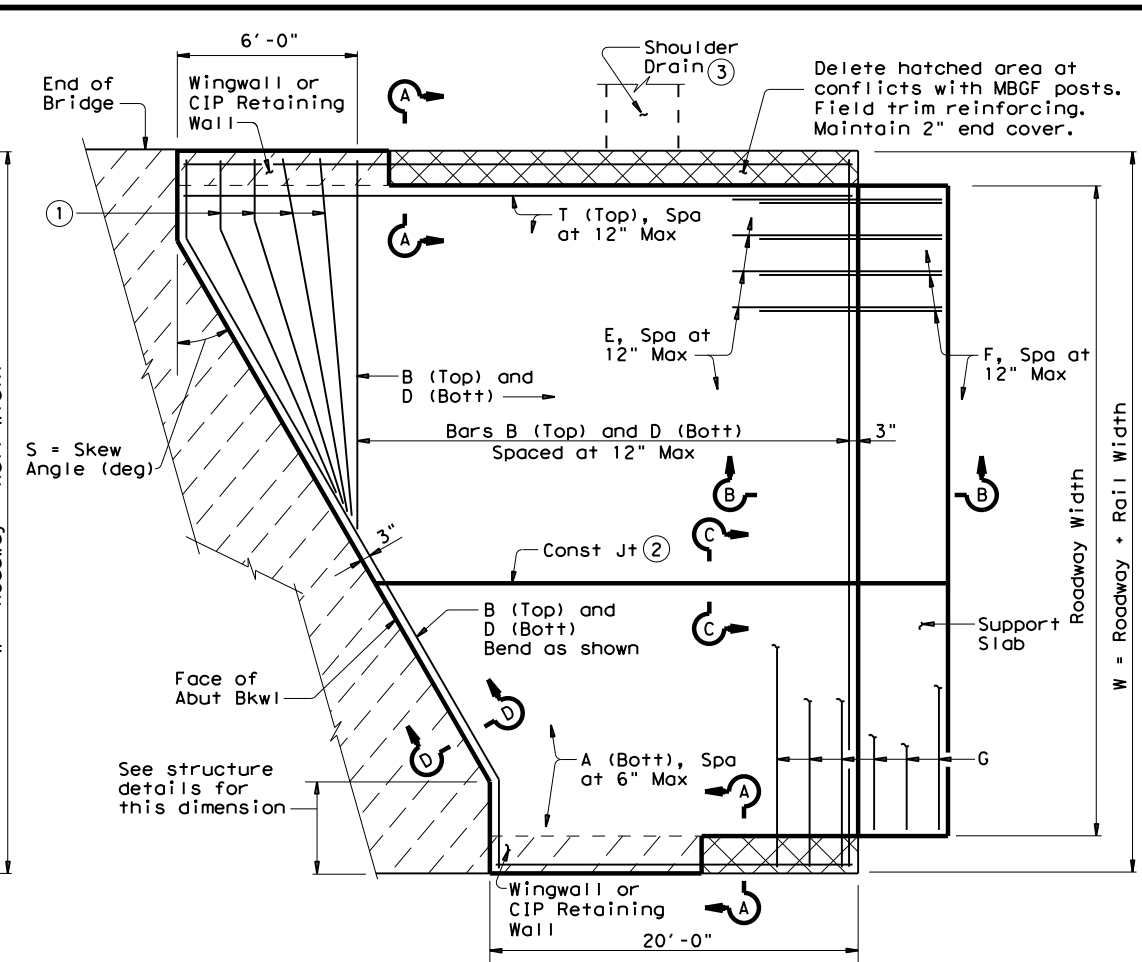


DISCLAIMER: The use of this standard is governed by the "Texas Engineering Practice Act". No warranty of any kind is made by TxDOT for any purpose whatsoever. TxDOT assumes no responsibility for the conversion of this standard to other formats or for incorrect results or damages resulting from its use.

LEVELS DISPLAYED
PATH:



PLAN
(Showing Non-Skewed Approach Slab)



PLAN
(Showing Skewed Approach Slab)

BAR TABLE	
BAR	SIZE
A	#8
B	#5
D	#5
E	#5
F	#5
G	#5
T	#5

APPROXIMATE QUANTITIES ④

Reinf steel weight = 8.5 Lbs/SF of Approach Slab
= 18.4 Lbs/LF of Support Slab

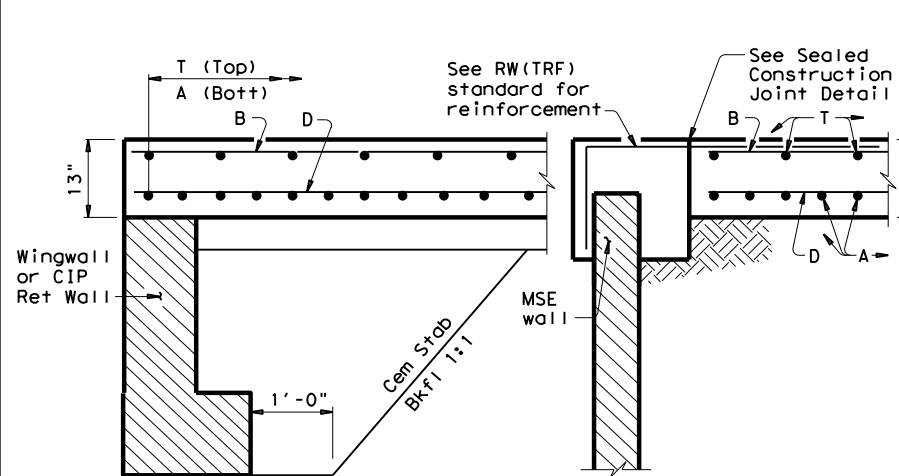
Area of Appr Slab = $20W + 0.5W^2 \tan S$ (SF)
(Support Slab not included)

W = Width of Approach Slab (ft)
S = Skew Angle (deg)

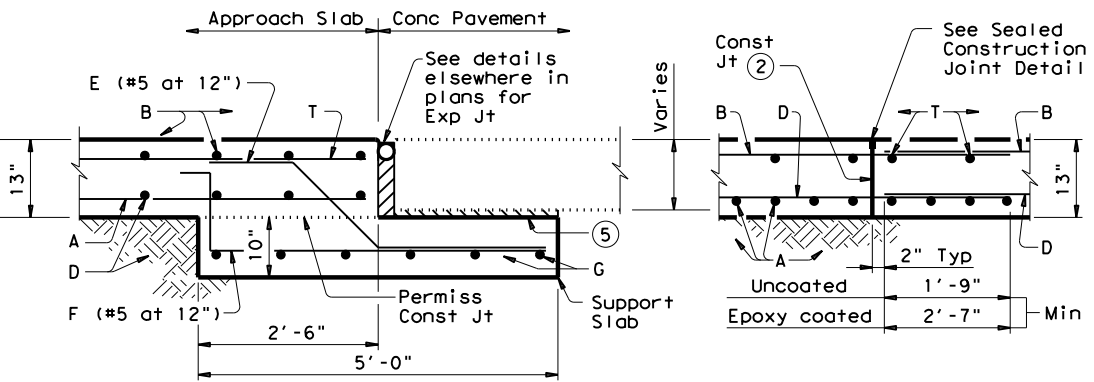
- ① Flare Bars B and D in this region (1'-6" Max Spa, 3" Min Spa). Minimum flared bar length = 2'-6". Bend bars as necessary.
- ② Provide longitudinal construction joints that align with longitudinal construction joints in the bridge slab with bridges built in stages. Other longitudinal construction joints must receive approval of the Engineer.
- ③ See details elsewhere in plans for shoulder drain location and details.
- ④ For Contractor's information only.
- ⑤ On portion of support slab that supports the concrete pavement, adjust top surface elevation, if required, to accommodate concrete pavement thickness. Smooth trowel finish. Oil top of support slab with 60 grade oil and apply heavy coat of powdered graphite. Press down one layer of 30# roofing felt.
- ⑥ Multiple piece tie bars are acceptable at longitudinal construction joints provided minimum laps shown are achieved.
- ⑦ See details elsewhere in plans for required cross-slope.
- ⑧ Place in accordance with Item 438.
- ⑨ Backer rod shall be 25% larger than joint opening and shall be compatible with the sealant.

GENERAL NOTES:

1. Construct approach slab in accordance with Item 422.
2. Concrete shall be Class "S" with a minimum compressive strength of 4,000 psi.
3. All reinforcing steel shall be Grade 60.
4. Construct the subgrade or subbase from the bridge for a minimum distance of 100 feet prior to the approach slab, unless otherwise indicated on the plans.
5. Compact and finish the subgrade or foundation for the approach slab to the typical cross-section and to the lines and grades shown on the plans.
6. Cure for 4 days using water or membrane curing per Item 422.
7. Sealant, backer rod and preformed bituminous fiber material is subsidiary to approach slab concrete.

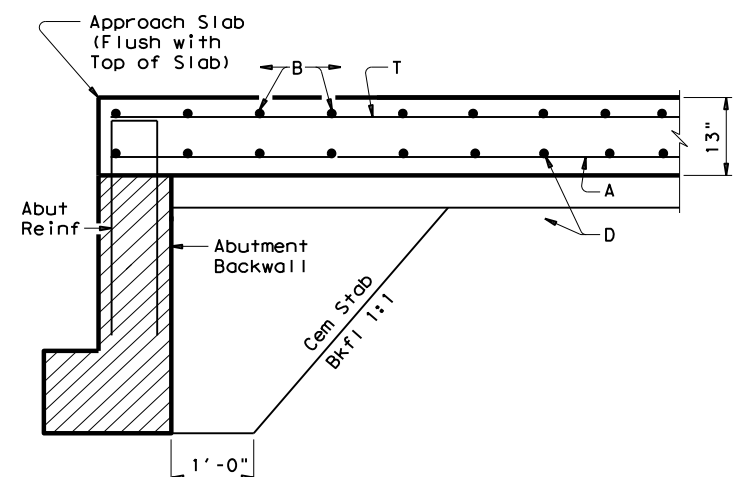


SECTION A-A

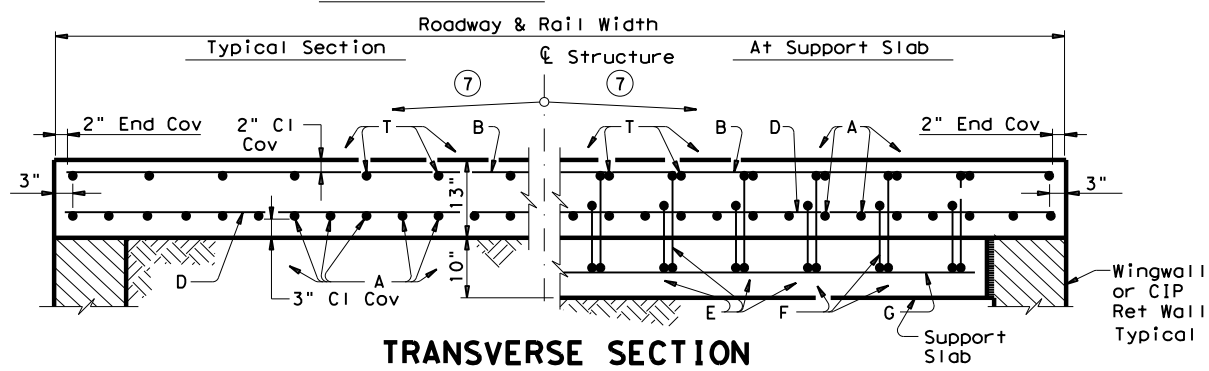


SECTION B-B

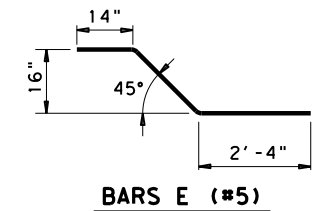
SECTION C-C ⑥



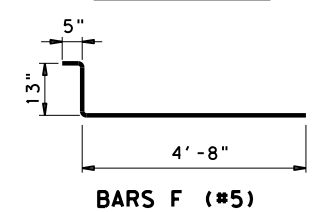
SECTION D-D



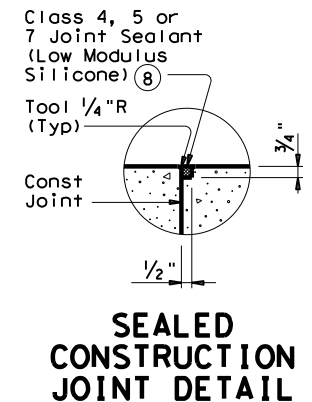
TRANSVERSE SECTION



BARS E (#5)



BARS F (#5)



SEALED CONSTRUCTION JOINT DETAIL

Texas Department of Transportation
Houston District

BRIDGE APPROACH SLAB
CONCRETE PAVEMENT
BAS-C

FILE: STDB10B.dgn	DN: TxDOT	CK: TxDOT	DW: TxDOT	CK: TxDOT
© TxDOT March 2009	DISTRICT	PROJECT NO.	SHEET	
REVISIONS 4/20/2015 updated to 2014 standard				
COUNTY	CONTROL	SECT	JOB	HIGHWAY