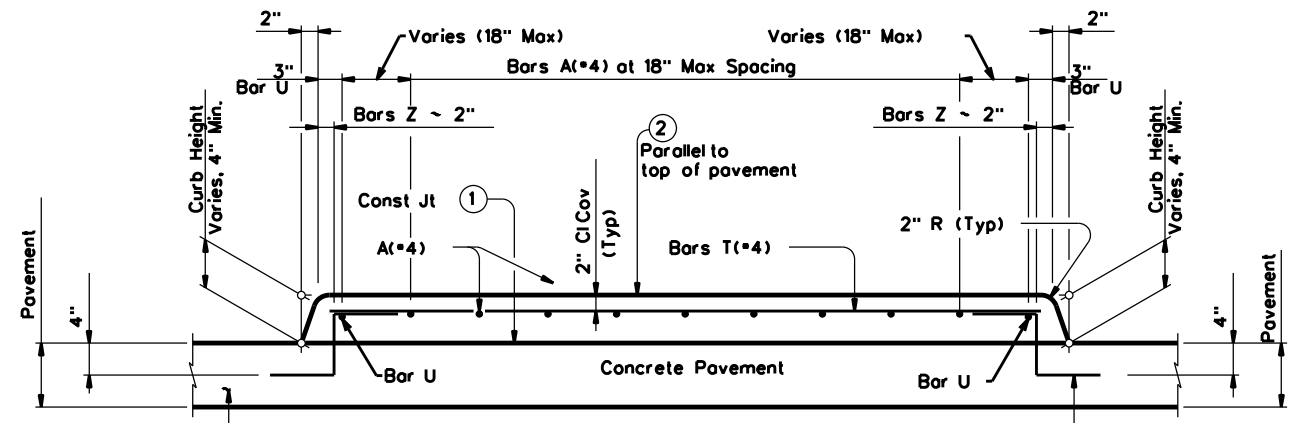
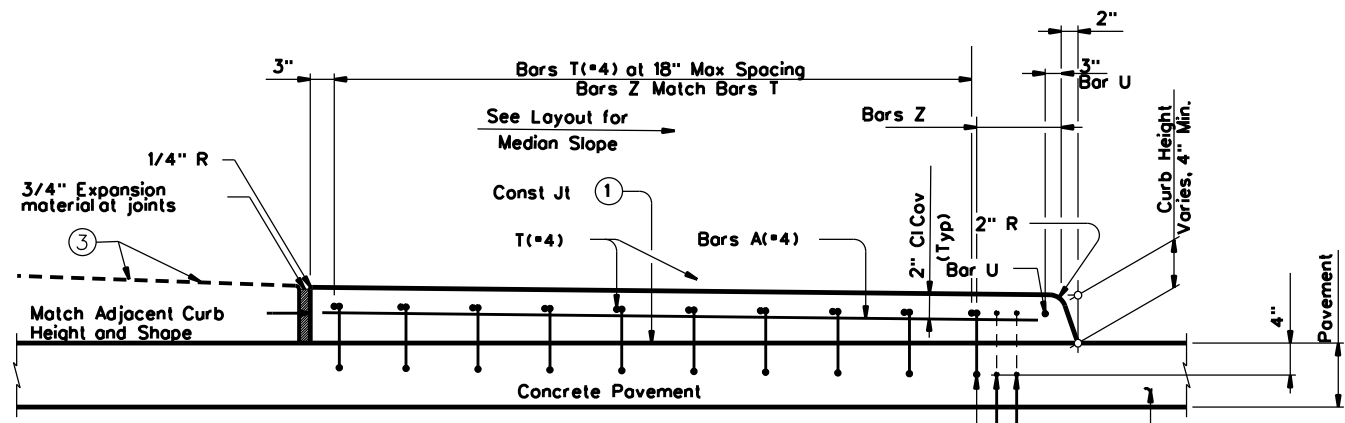
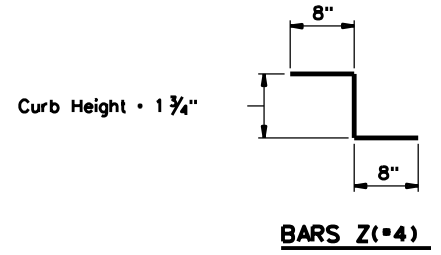
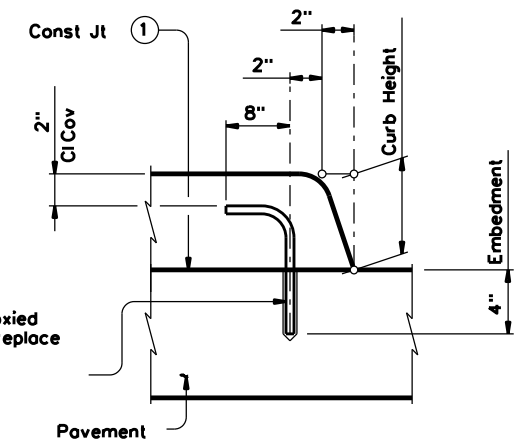


DISCLAIMER: The use of this standard is governed by the "Texas Engineering Practice Act". No warranty of any kind is made by TxDOT for any purpose whatsoever. TxDOT assumes no responsibility for the conversion of this standard to other formats or for incorrect results or damages resulting from its use.

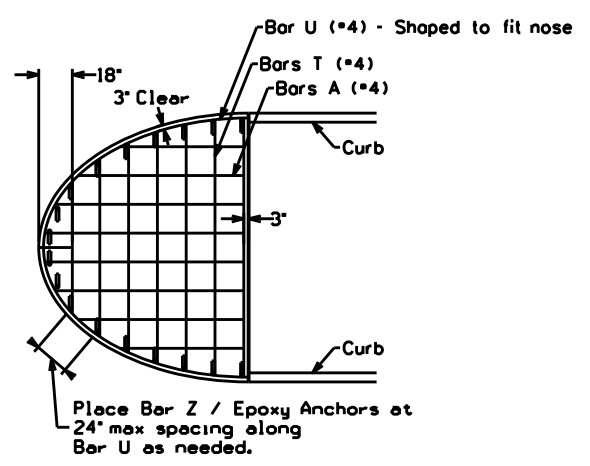
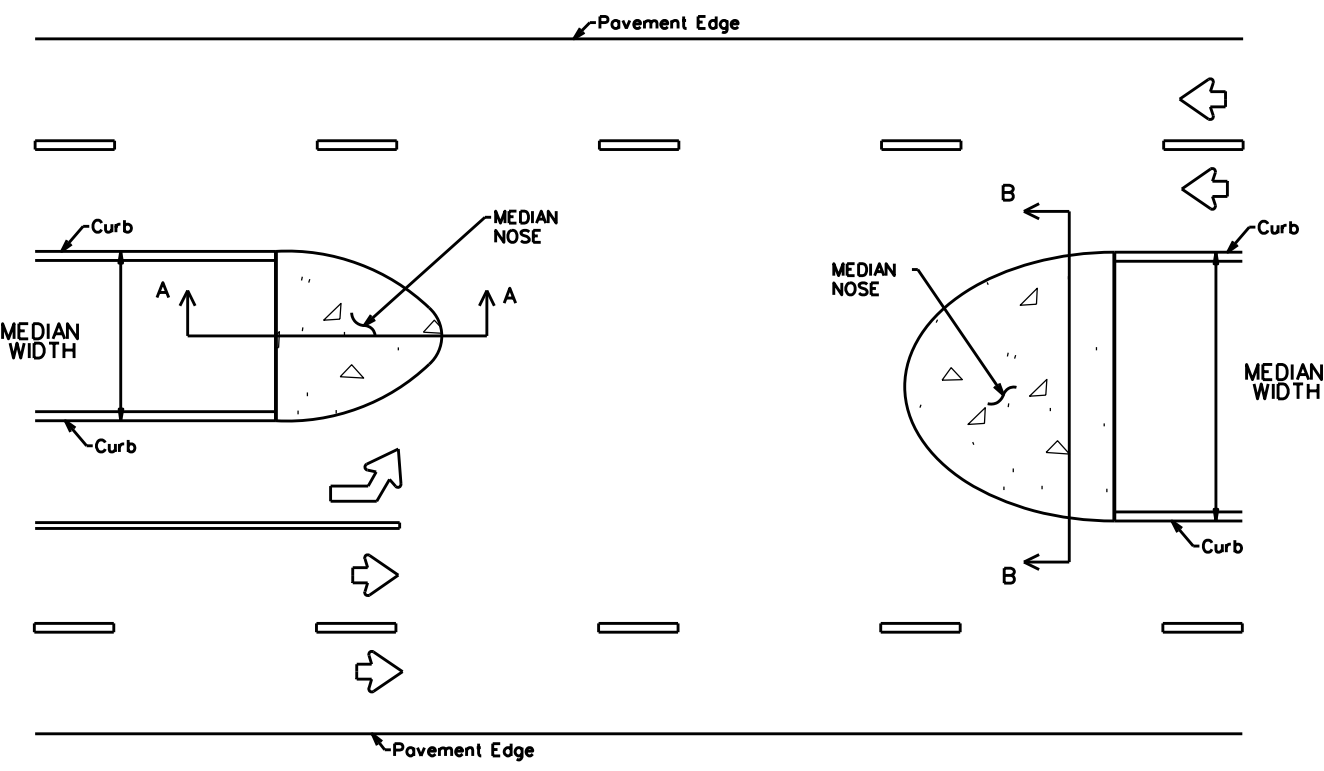
LEVELS DISPLAYED	1
DEPTH	50'



- ① Provide broom finish to top of pavement where raised median area is defined.
- ② Unless noted otherwise on the pavement details.
- ③ Unless otherwise directed, place concrete riprap over pavement or base. If not over pavement or base, place sod or seed.



Embed EA(=4) bar into concrete with a Type III (Class C) epoxy meeting the requirements of DMS-6100, "Epoxyes and Adhesives". Follow manufacturer's directions for installing the epoxied anchor bars.



MATERIAL NOTES:
Provide Grade 60 reinforcement. Welded wire reinforcement (WWR) meeting ASTM A497 of equivalent size and spacing may be substituted for Bars A and Bars T.

Epoxy coat reinforcement if pavement reinforcement is required to be epoxy coated.

DESIGNER NOTES:
Provide Median Slope in Design Layouts.

SHEET 1 OF 1

Texas Department of Transportation
Houston District

MEDIAN NOSE DETAILS

HOU-MEDNS-22

FILE: stdB13.dgn	DN: NHEB	CK: TxDOT	DW: NHEB	CK: TxDOT
© TxDOT FEBRUARY 2022		DISTRICT	PROJECT	SHEET
REVISIONS		HOU		
03/15 FOR 2014 SPECS				
02/22 ADDED NOTE FOR FINISH BEHIND MEDIAN NOSE				
COUNTY	CONTROL	SECT	JOB	HIGHWAY