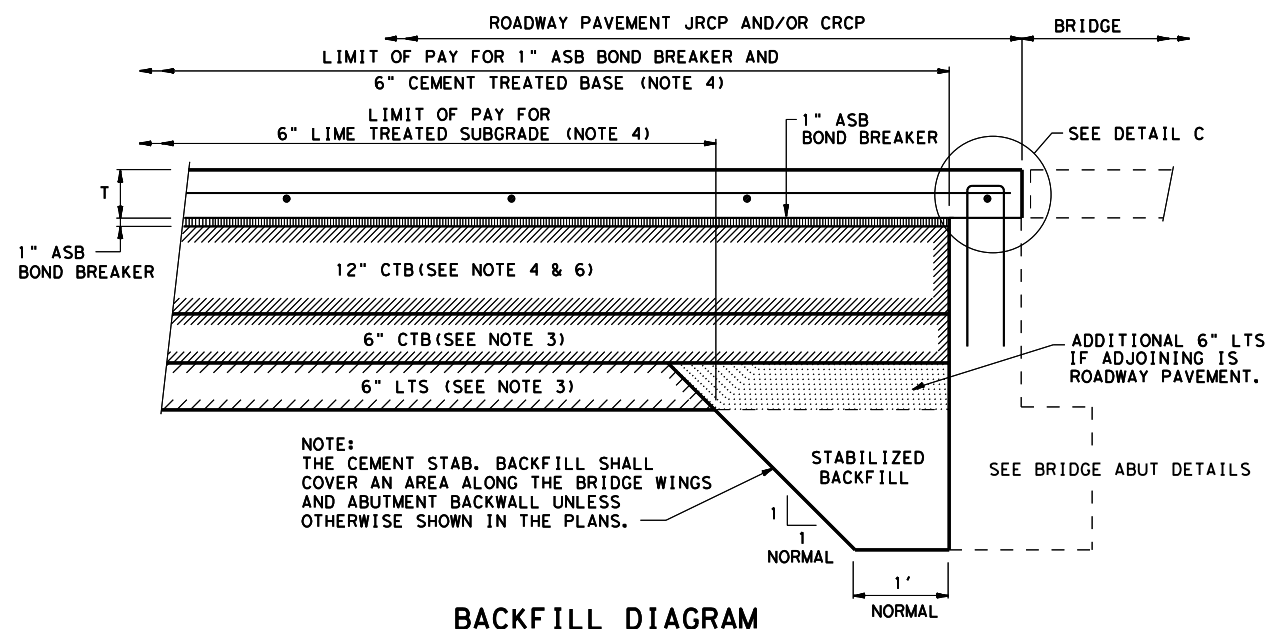
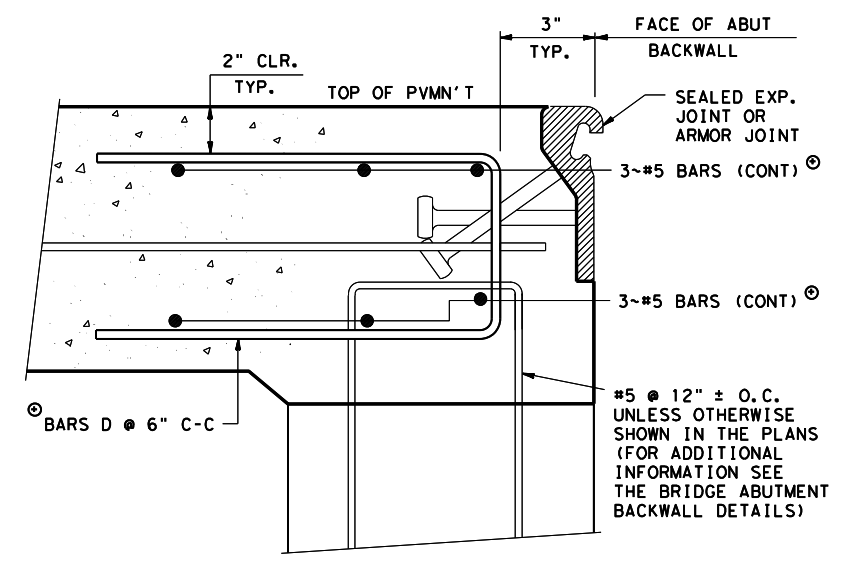


**NOTES: (CONT)**

5. THIS STANDARD WILL BE USED WITH SPECIAL SPECIFICATION "CONCRETE PAVEMENT TERMINALS" THIS ITEM WILL BE MEASURED BY THE LINEAR FOOT OF WIDE FLANGE BEAM COMPLETE IN PLACE.
  6. WIDE FLANGE BEAM, SUPPORT SLAB, SLEEPER SLAB, 12 INCHES OF CEMENT TREATED BASE, POLYETHYLENE BONDBREAKER AND ANY EXCAVATION NECESSARY WILL NOT BE PAID FOR DIRECTLY, BUT WILL BE CONSIDERED SUBSIDIARY TO SPECIAL SPECIFICATION ITEM, "CONCRETE PAVEMENT WIDE FLANGE TERMINALS".
  7. POLYETHYLENE FOAM (6 POUND DENSITY), SAW CUTS, EXPANSION JOINTS, EPOXY COATED DOWEL AND EXPANSION JOINT MATERIALS WILL NOT BE PAID FOR DIRECTLY BUT SHALL BE CONSIDERED INCIDENTAL TO THE ITEM 360.
  8. THE CONCRETE PAVEMENT, 1 INCH ASB BONDBREAKER, 6 INCH PORTLAND CEMENT TREATED BASE AND 6 INCH LIME TREATED SUBGRADE WILL BE PAID FOR UNDER THE APPROPRIATE BID ITEMS.
  9. SHEAR CUTTING OF DOWEL BARS IS PROHIBITED.
  10. EPOXY COATING OF DOWEL BARS PER SPECIFICATION ITEM 440.
  11. CEMENT STABILIZED BACKFILL IS REQUIRED AT ALL ABUTMENTS.
- CTB - CEMENT TREATED BASE  
 LTS - LIME TREATED SUBGRADE  
 CRCP - CONTINUOUSLY REINFORCED CONCRETE PAVEMENT  
 JRCP - JOINTED REINFORCED CONCRETE PAVEMENT  
 ASB - ASPHALT STABILIZED BASE  
 T - PAVEMENT THICKNESS



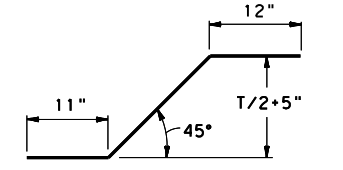
**BACKFILL DIAGRAM**



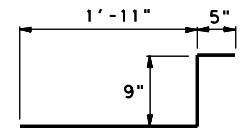
**DETAIL C**

(SHOWING ADDITIONAL REINFORCEMENT FOR ROADWAY PAVEMENT WITH SEALED EXPANSION JOINTS OR ARMOR JOINTS AT ABUTMENTS.)

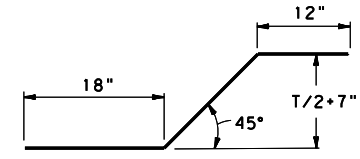
⊙ THE ADDITIONAL STEEL REQUIRED BY THE ABOVE DETAIL "C" SHALL NOT BE PAID FOR DIRECTLY, BUT SHALL BE CONSIDERED INCIDENTAL TO THE ITEM, "CONCRETE PAVEMENT".



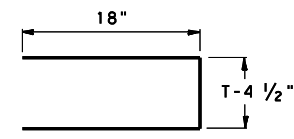
**BARS A (#4)**



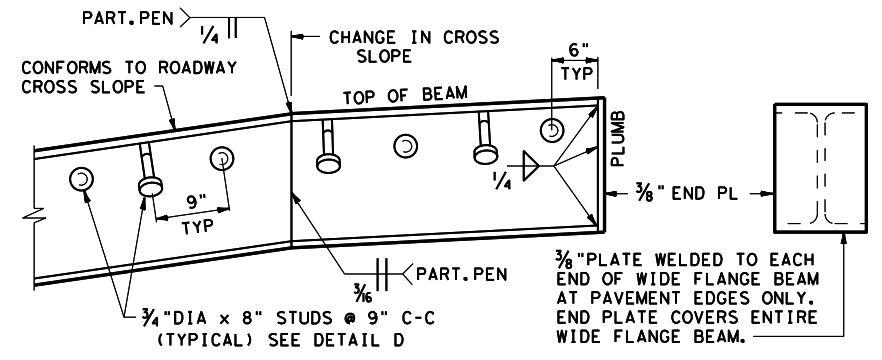
**BARS B (#4)**



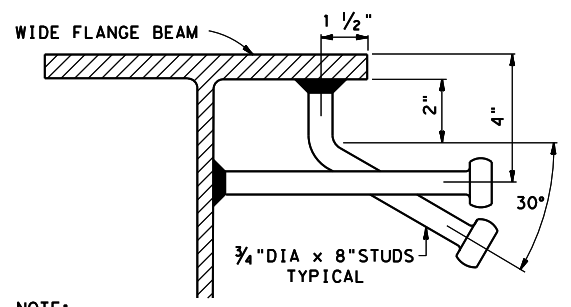
**BARS C (#4)**



**BARS D (#5)**



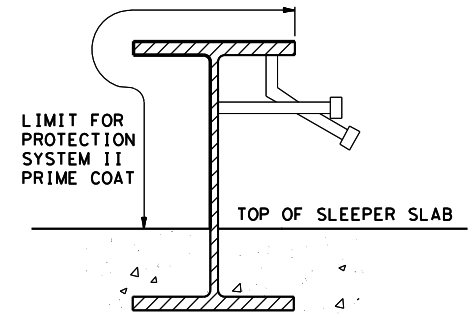
**WIDE FLANGE DETAIL**



NOTE: STUDS SHALL BE ELECTRIC ARC END WELDED WITH COMPLETE FUSION. ANY STUD WHICH IS DISLODGED IN SHIPPING OR CAN BE DISLODGED BY HAMMER SHALL BE REPLACED.

**DETAIL D**

TABLE OF BEAM SIZES	
PAVEMENT THICKNESS	WIDE FLANGE BEAM DESIGNATION
8"-9 1/2"	W14 X 68
10"-11 1/2"	W16 X 89
12"-13"	W18 X 97
14" & 15"	W21 X111



**WIDE FLANGE PAINTING DETAIL**

SEE "TABLE OF BEAM SIZES"

ESTIMATED QUANTITIES (FOR CONTRACTOR'S INFORMATION ONLY)						
ITEM	PAVEMENT THICKNESS					
	8" THRU 10"	10 1/2" THRU 12"	12 1/2" THRU 13"	14"	15"	
SLEEPER CONCRETE	0.40 CY/LF	0.40 CY/LF	0.40 CY/LF	0.40 CY/LF	0.40 CY/LF	
SLEEPER REINFORCING STEEL	49.1 LBS/LF	49.3 LBS/LF	49.6 LBS/LF	49.7 LBS/LF	49.8 LBS/LF	
SUPPORT CONCRETE	0.09 CY/LF	0.09 CY/LF	0.09 CY/LF	0.09 CY/LF	0.09 CY/LF	
SUPPORT REINFORCING STEEL	6.3 LBS/LF	6.4 LBS/LF	6.5 LBS/LF	6.6 LBS/LF	6.6 LBS/LF	
12" CEMENT TREATED BASE	1.95 CY/LF (BASED ON JOINTS BEING NORMAL TO THE PAVEMENT CENTERLINE)					

**WIDE FLANGE PAVEMENT TERMINALS**

FOR CONTINUOUSLY & JOINTED REINFORCED CONCRETE PAVEMENT DETAILS (FOR USE AT BRIDGE END OR PAVEMENT TERMINUS)

**WFPT**

FILE: STDB-3.DGN	DN: TxDOT	CK: TxDOT	DW: TxDOT	CK: TxDOT
© TxDOT 2014	DISTRICT FED REG	PROJECT NO.	SHEET	
REVISIONS	HOU	6		
02/15 2014 SPECS	COUNTY	CONTROL	SECT	JOB HIGHWAY