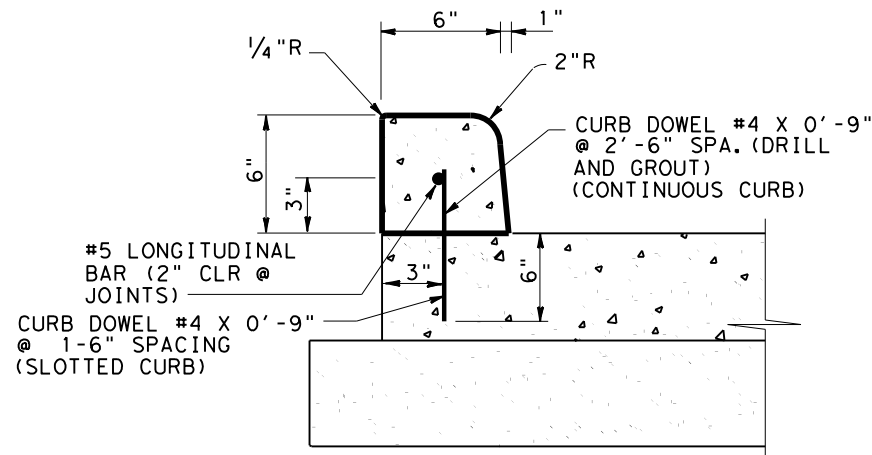


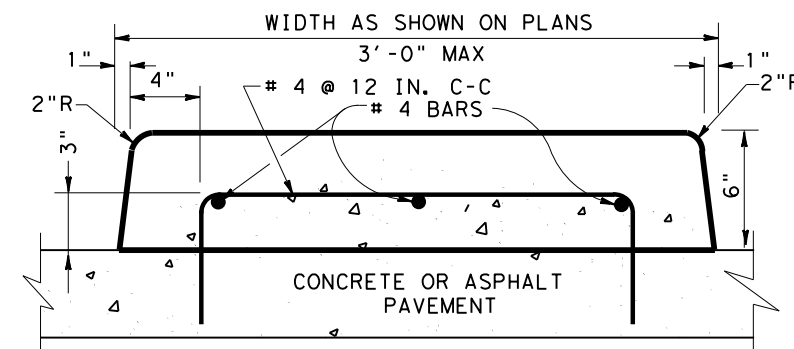
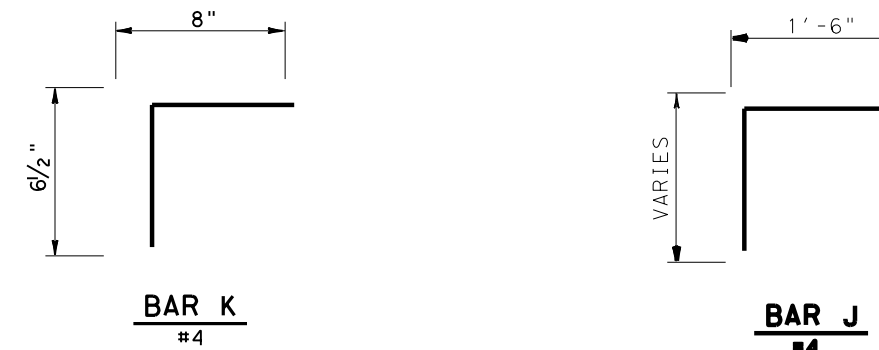
CONTINUOUS CURB; DOWEL #5 X 1'-3"  
@ 2'-6" SPA. (DRILL & GROUT)  
SLOTTED CURB; DOWEL #5 X 1'-3"  
@ 1'-6" SPA. (DRILL & GROUT)

**SHOWN ON EXISTING OR PROPOSED ACP PAVEMENT**  
(PAY ITEM 529-6011) - FOR CONTINUOUS

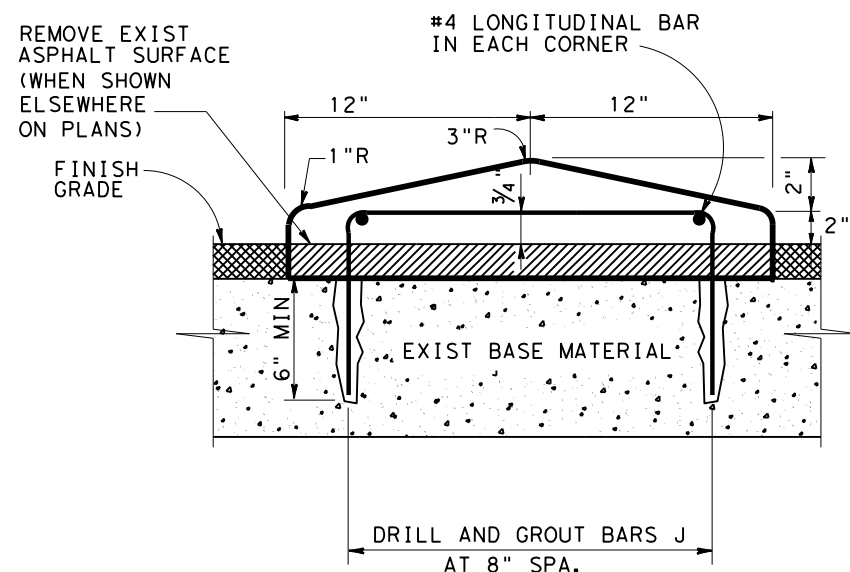
**CONCRETE CURB (DOWEL) (6 IN.)**



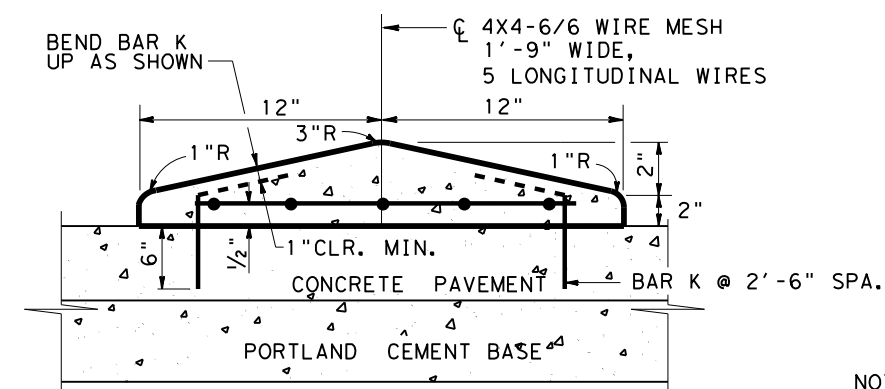
**SHOWN ON EXISTING OR PROPOSED  
CONCRETE PAVEMENT**  
(PAY ITEM 529-6011) - FOR CONTINUOUS



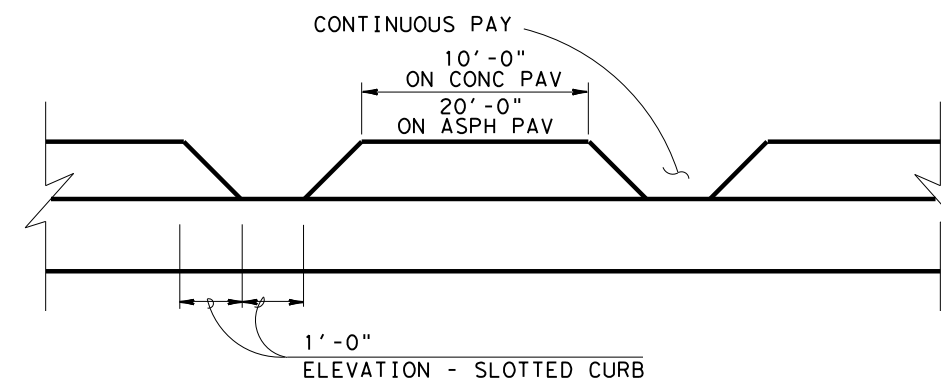
ITEM 536-6001 CONCRETE MEDIAN  
SEE NOTE 2



**SHOWN ON EXISTING ACP PAVEMENT**  
SEE NOTE 2 - ITEM 536-6003 CONC DIRECTIONAL ISLAND



**SHOWN ON EXISTING OR PROPOSED  
CONCRETE PAVEMENT**  
SEE NOTE 2 - ITEM 536-6003 CONC DIRECTIONAL ISLAND



ITEM 529-6012 CONCRETE CURB (SLOTTED) - ON CONC.  
ITEM 529-6009 CONC CURB (DOWEL) (SLOTTED) - ON ASPH.

**NOTES:**

1. DRILL AND GROUT BARS SHOWN AS PER ITEM 420.4.7.10, 6" EMBEDMENT, MINIMUM ON CONC.
2. INSTALL A 2 INCH DRAINAGE OPENING AT 10 FT C-C WHEN CURB/ISLAND IS NOT ON TOP OF CROSS SECTION. (LOCATED ON A 2 OR 3 PERCENT TRANSVERSE GRADE, OR SUPERELEVATION.)

**CONCRETE DIRECTIONAL ISLAND**

<b>CONCRETE CURB AND DIRECTIONAL ISLAND DETAILS</b> <b>CC &amp; DID</b>										
FILE: STDB-9.dgn	DN:	CK:	DW:	CK:	PROJECT NO.					SHEET
© TxDOT 2014	DIST	FED REG	HOU 6		COUNTY					CONTROL SECT JOB HIGHWAY