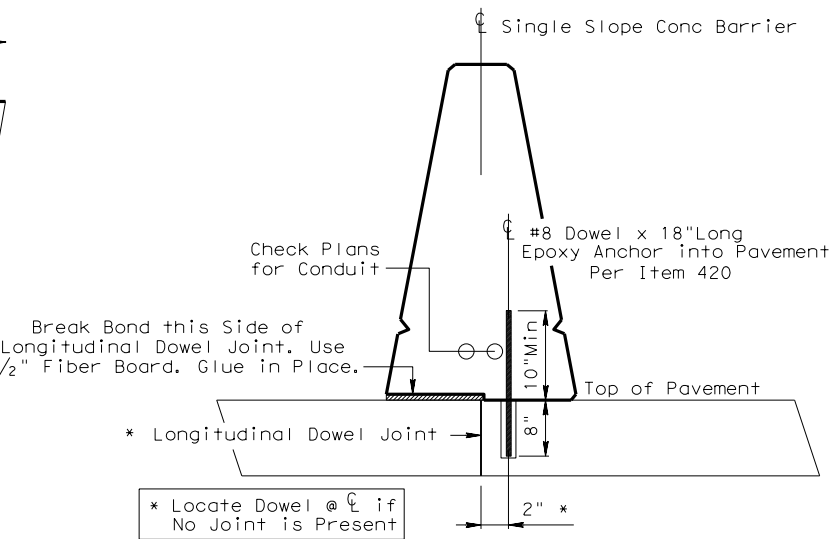
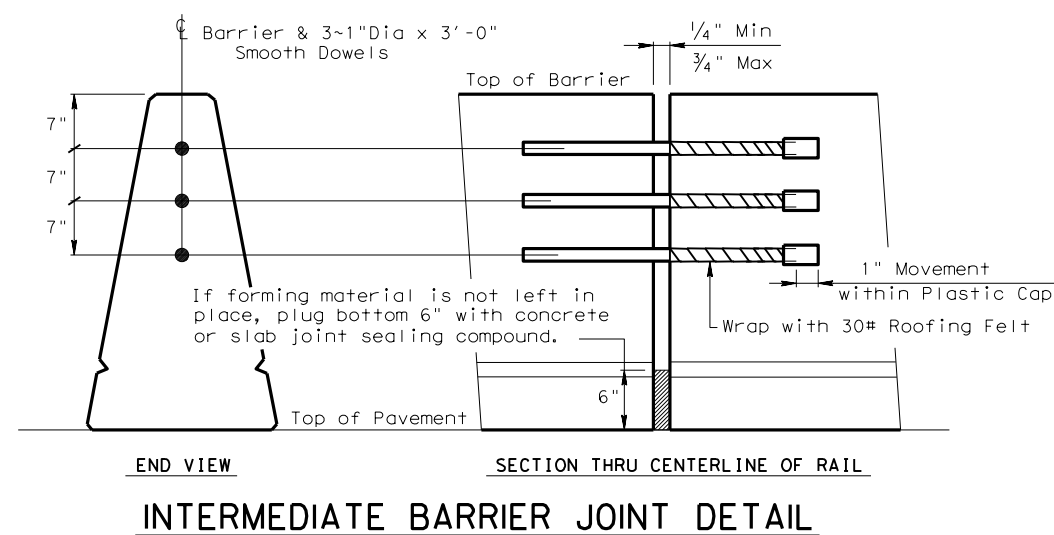
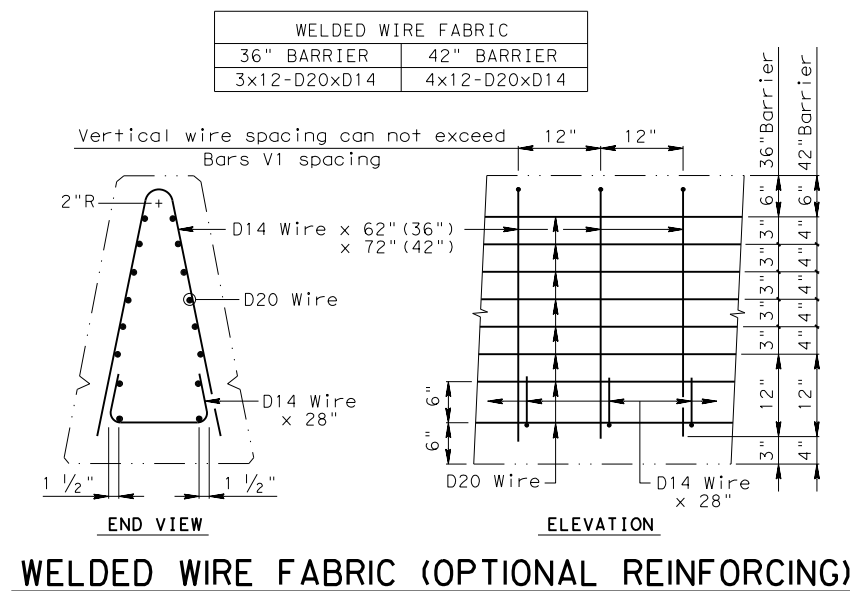


**CAST-IN-PLACE SINGLE SLOPE CONCRETE BARRIER**  
36" Barrier Shown ~ 42" Barrier Similar



**GENERAL NOTES:**

- Precast barrier is not allowed. Cast-in place barrier may be slip formed. Additional reinforcement may be tack welded to the upper two-thirds of the reinforcing cage to provide bracing.
- All concrete will be Class C.
- All reinforcing steel will be Grade 60, unless otherwise specified. All welded rebar is ASTM A706.
- Chamfer all edges 3/4" inch.
- The minimum bar splice length is 24 times the bar diameter.
- Welded wire fabric may be used as an option to conventional reinforcement. All wire is 60 ksi yield strength.
- Transitions to barrier height, as needed, will be determined by the Engineer. Changes in barrier height should not normally exceed 2 inches per 30 feet. Vertical steel will be uniformly transitioned throughout the variation in barrier height as directed by the Engineer.
- Installation of anchorage dowels are not paid for directly. Installation is incidental to barrier bid items.
- Drain slots may be used where shown elsewhere on the plans or as directed by the Engineer.



**Texas Department of Transportation**  
Houston District (Roadway)

**SINGLE SLOPE CONCRETE BARRIER**  
TYPE 2  
(CAST-IN-PLACE)

**SSCB(2)-HOU**

FILE:	STD04.DGN	DW:	TxDot	CK:	TxDot	DW:	TxDot	CK:	TxDot
© TXDOT	AUG. 2005	DIST	FED REG	PROJECT NO.		SHEET			
REVISIONS	HOU	6							
3/2015 2014 SPECS	COUNTY	CONTROL	SECT	JOB	HIGHWAY				

R = Radius  
Dia = Diameter