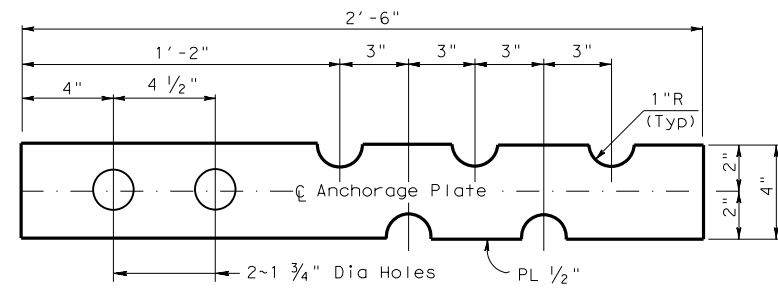
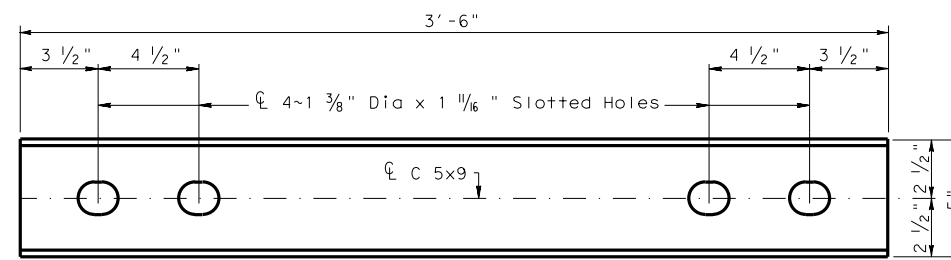


| APPROXIMATE QUANTITIES FOR A 30 FT. SECTION | | |
|---|-----|------|
| CONCRETE | CY | 3.27 |
| REINFORCING STEEL | LBS | 390 |

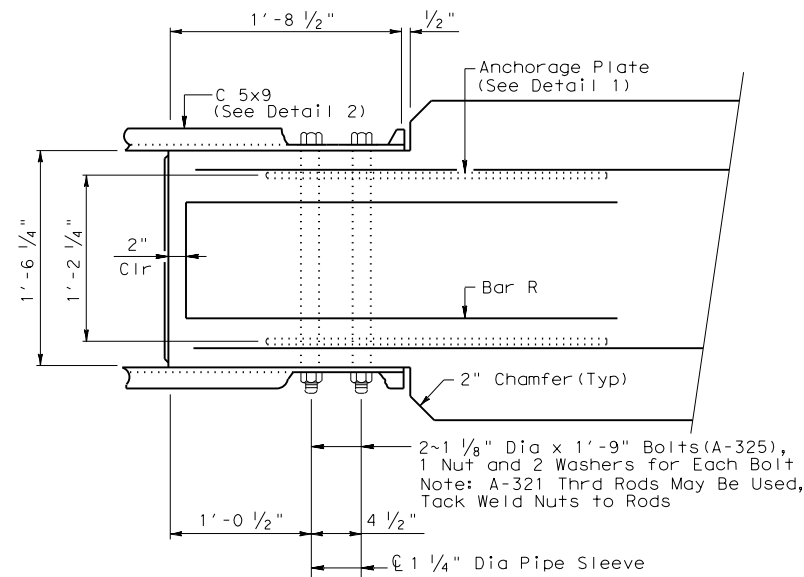
Approximate Weight Per Foot is 442 Lbs.
For Contractor's Information Only.
R = Radius
Dia = Diameter



DETAIL 1

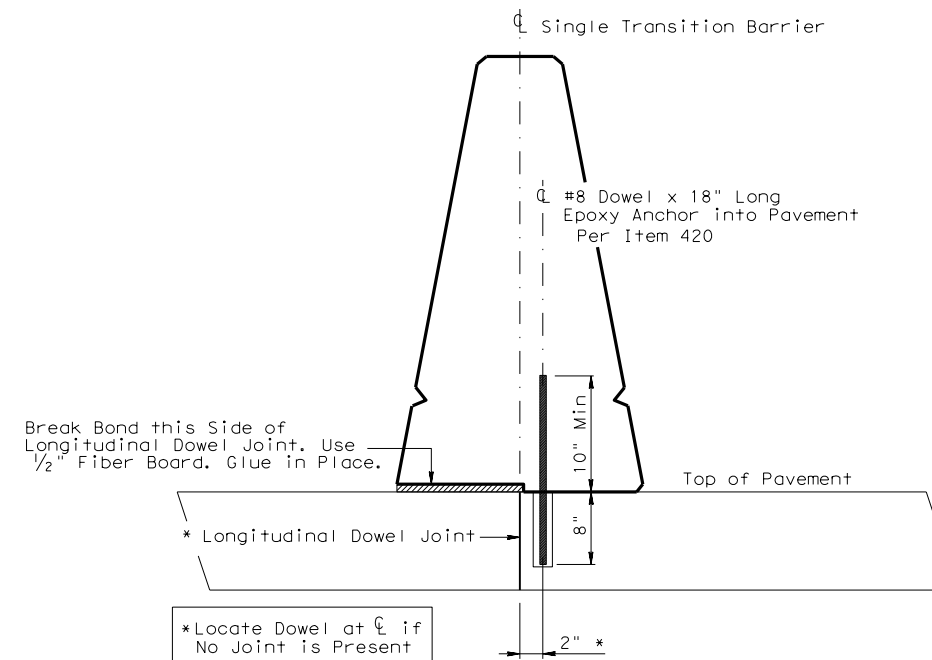


DETAIL 2

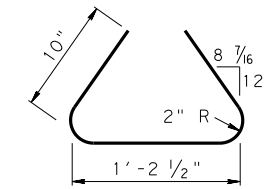


PLAN

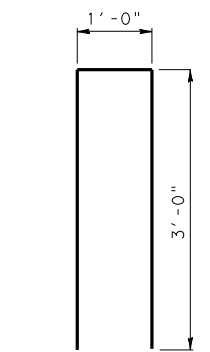
CTB END
Showing Bolt Anchorage, Rebar & Block-out



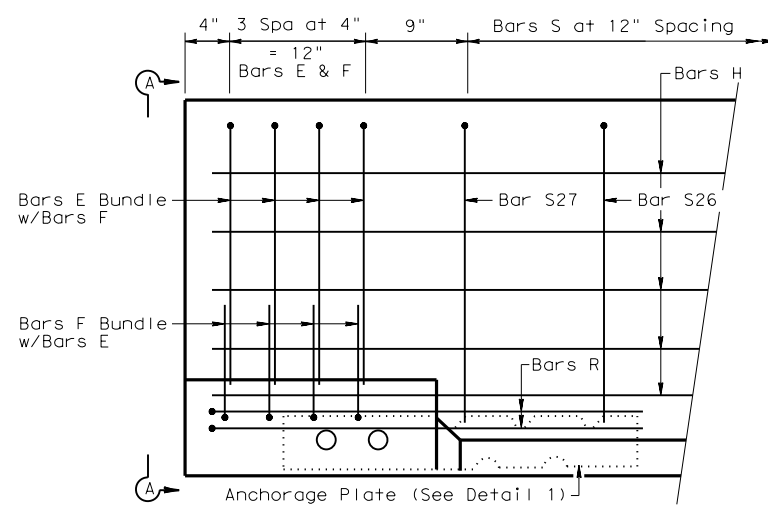
ANCHORAGE AND JOINT DETAIL



BAR F
(#5)

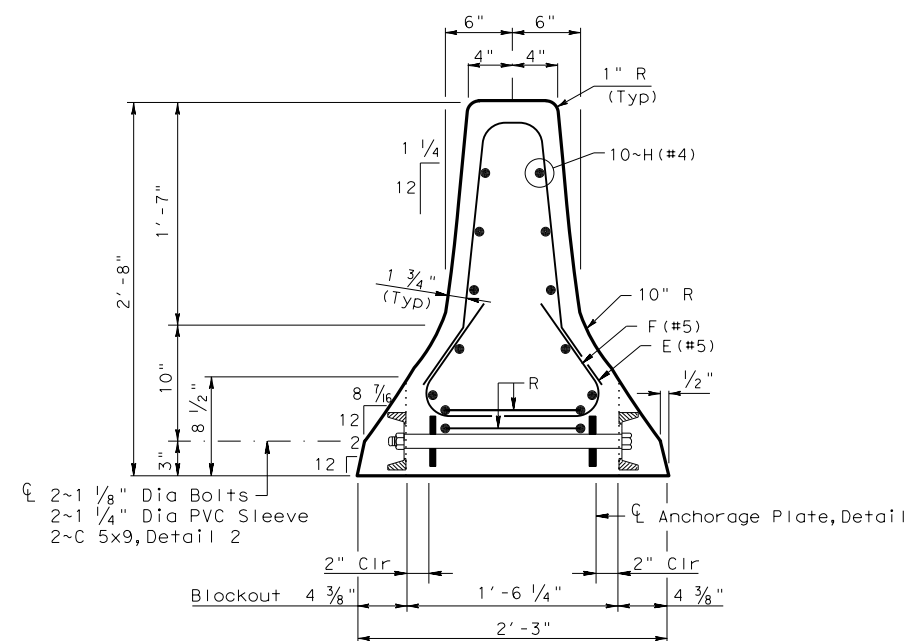


BAR R
(#6)



ELEVATION

DETAIL A
CTB END



SECTION A-A

THIS SHEET MUST BE SIGNED, SEALED AND DATED FOR USE

SHEET 2 OF 2



BARRIER TRANSITION DETAILS (SSCB to CTB)

BTD (2)

| | | | | |
|-------------------|-----------|-----------|-------------|-----------|
| FILE: STDC5.DGN | DN: TxDot | CK: TxDot | DW: TxDot | CK: TxDot |
| © TXDOT MAY 2010 | DIST | FED REG | PROJECT NO. | SHEET |
| REVISIONS | HOU | 6 | | |
| 3/2015 2014 SPECS | COUNTY | CONTROL | SECT | JOB |
| | | | | HIGHWAY |