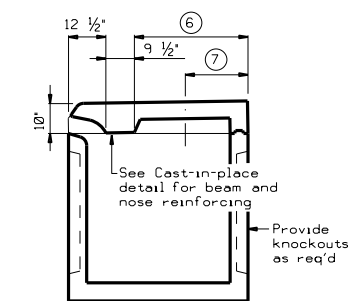
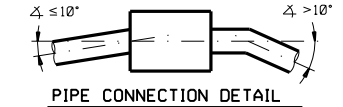


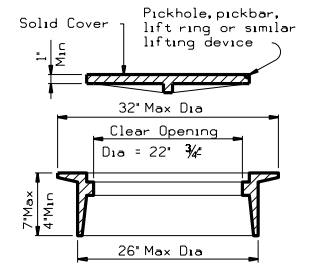
PLAN



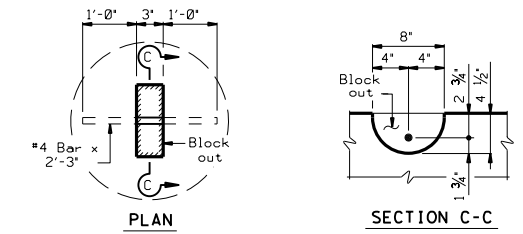
PREFABRICATED INLET



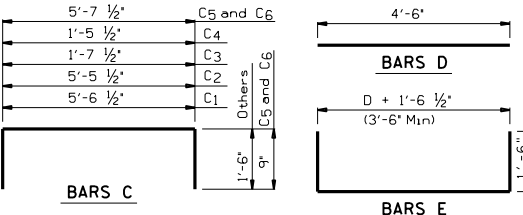
PIPE CONNECTION DETAIL



RING AND COVER DETAILS

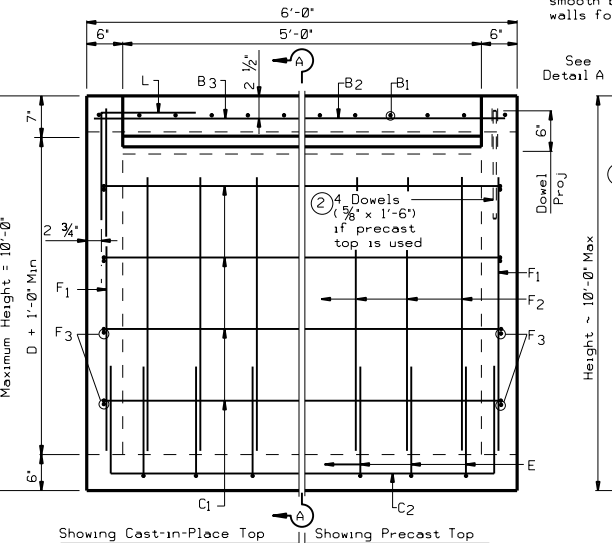


LIFTING CATCH

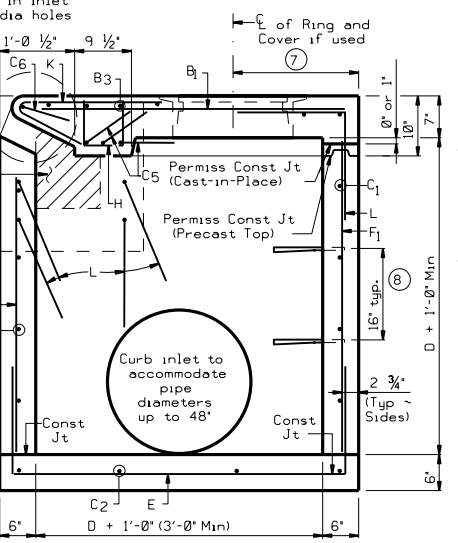


| REINF STEEL | | |
|-------------|------|---------|
| Bar | Size | Spacing |
| B1 | #4 | 6" |
| B2 | #5 | 6" |
| B3 | #4 | 6" |
| C1-2 | #4 | 12" |
| C3-4 | #4 | 9" |
| C5 | #6 | 9" |
| C6 | #4 | 9" |
| D | #4 | 9" |
| E | #4 | 12" |
| F1-3 | #4 | 12" |
| G | #4 | 6" |
| H | #3 | 4" |
| K | #4 | 9" |
| L | #4 | 6" |

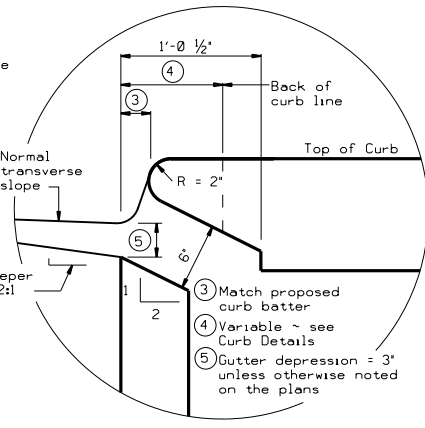
⑨ As shown



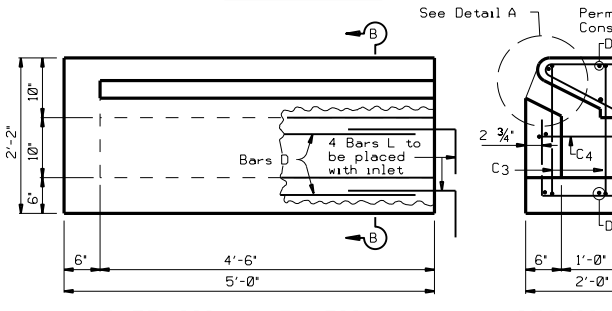
ELEVATION



SECTION A-A

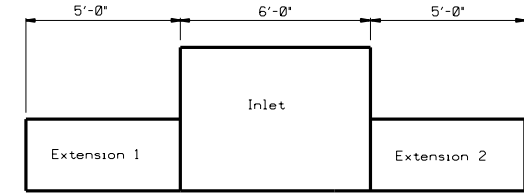


DETAIL A



EXTENSION ELEVATION

SECTION B-B



EXTENSION PLACEMENT

INSTALL A 3 FT. (HORIZ.) x 6 IN. (VERT.) OPENING ON THE BACK OF THE INLET WHEN SPECIFIED ELSEWHERE ON THE PLANS. MOVE STEPS AS NEEDED. NO REINFORCING ON OPENING/ON 2 IN. ADJACENT TO OPENING.

DESIGNERS: CLARIFY FLOWLINE OF OPENING AND INCLUDE OPENING IN HYDRAULIC CALCULATIONS.

GENERAL NOTES:
 No alternate designs nor alternate details shall be permitted for precast or cast in place inlets.
 Quantities shown herein are for Contractor's information only. Unless otherwise shown in the plans, payment will be made for each inlet of the type specified and for each extension. Each five foot curb opening of extension is considered 'one extension' regardless of whether placed monolithically or precast. Extension length shall be in multiples of 5 feet.
 Engineer has the option of specifying cast-in-place top with ring and cover or removable precast top as specified elsewhere in plans. Shop drawings are required for Precast Inlets.
 In areas of conflict between reinforcing steel, blockouts, pipes, anchor bolts or other reinforcing steel, the reinforcement shall be bent or adjusted to clear as directed by the Engineer.
 Ring and cover shall conform to the requirements of AASHTO M306, 'Standard Specification for Drainage Structure Castings'. Materials shall conform to ASTM A48, Class 35B for gray iron castings or ASTM A536, Grade 65-45-12 for ductile iron castings. Aluminum alloy castings shall not be permitted.

Texas Department of Transportation
Houston District

CURB INLET TYPE C
(WITH OR WITHOUT EXTENSION)

HIL-C

| | | | | | |
|--|-----------|--------------|-------------|-----------|------|
| FILE: STDD1.DGN | DN: TxDOT | CH: TxDOT | DN: TxDOT | CH: TxDOT | STD: |
| © TxDOT Feb 2010 | DIST | FED REG | PROJECT NO. | SHEET | |
| REVISIONS | HOUS | 6 | | | |
| 2/2010 Added note concerning opening on the back of inlet. | COUNTY | CONTROL SECT | JOB | HIGHWAY | |
| 10/2014 Removed Note 10 | | | | | |

D = Diameter
R = Radius