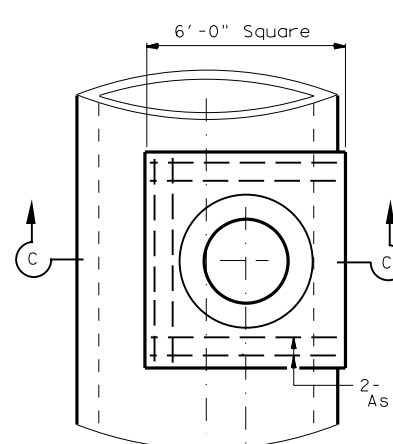
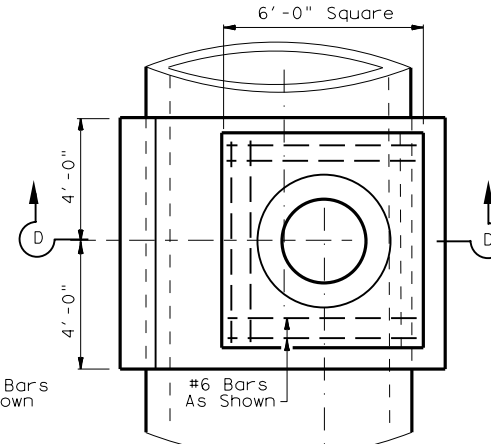


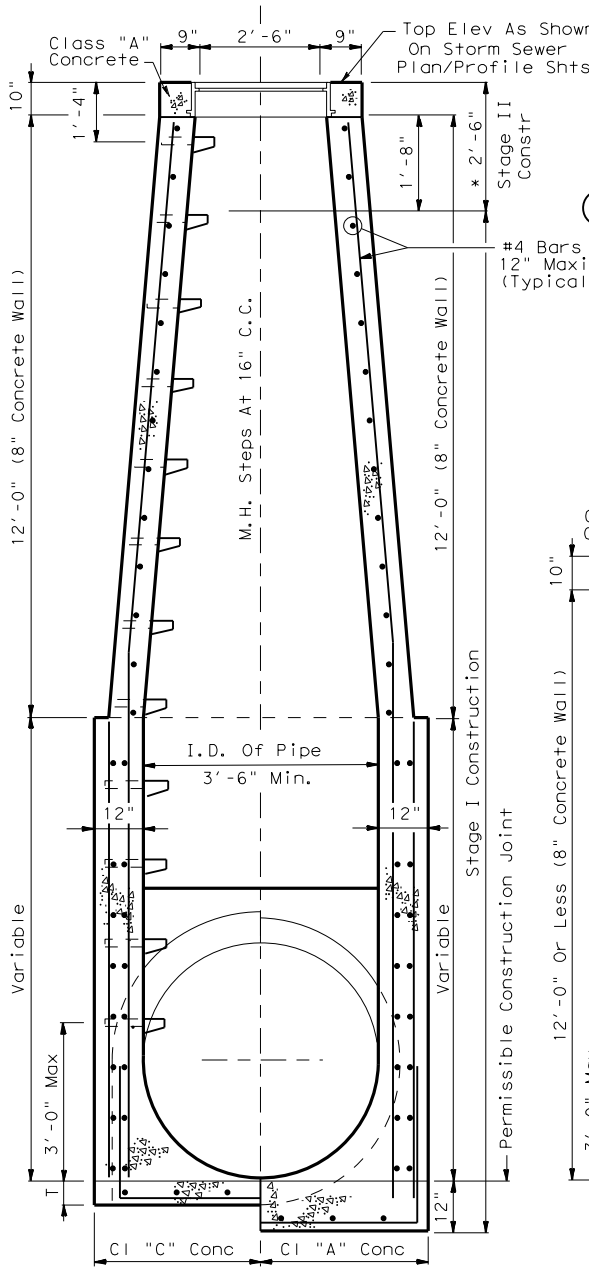
CAST IRON MANHOLE STEPS
(In Stock Locally)



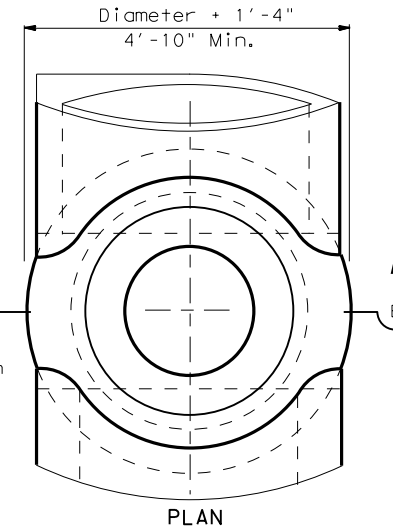
MONOLITHIC SEWERS



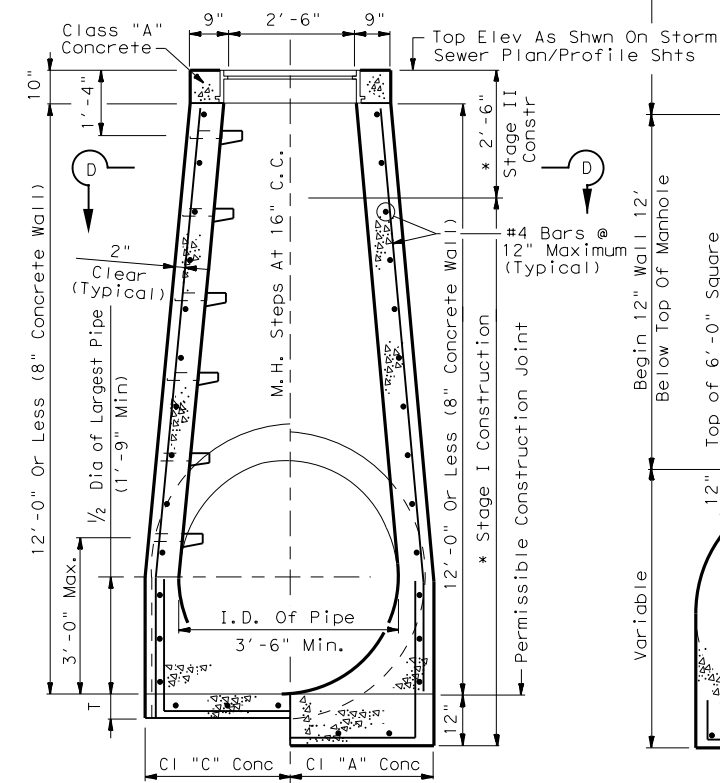
PRECAST PIPE SEWERS



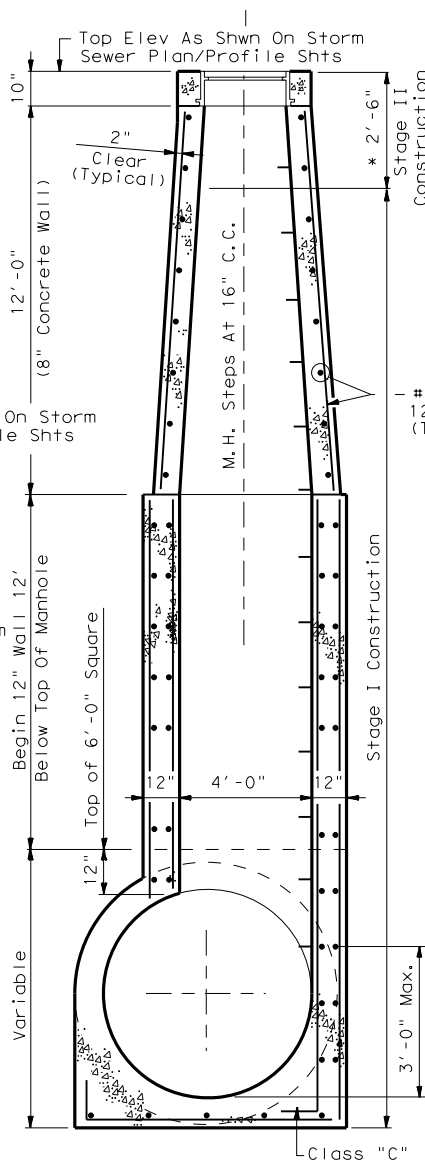
MONOLITHIC SEWERS PRECAST PIPE SEWERS
SECTION A-A



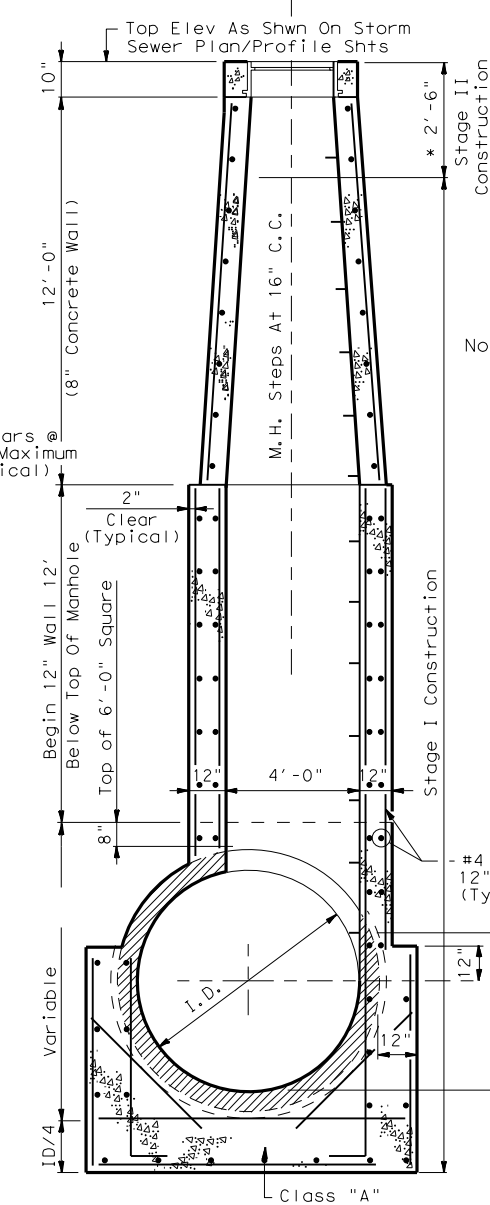
12' HEIGHT & UNDER



MONOLITHIC SEWERS PRECAST PIPE SEWERS
SECTION B-B



SECTION C-C

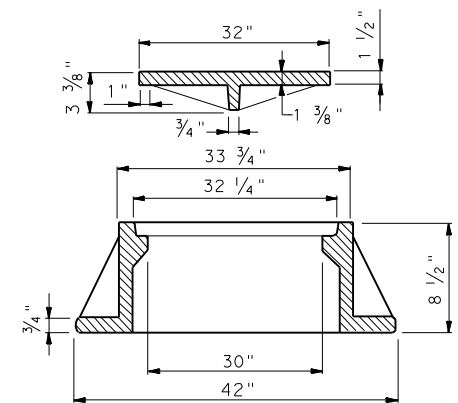


SECTION D-D

MANHOLE - TYPE A
FOR PIPES 54" AND SMALLER

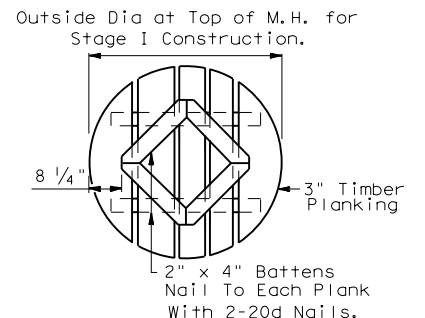
MANHOLE - TYPE B
FOR PIPES 60" AND LARGER

GENERAL NOTES:
See Standard or Detail Sheet For Excavation And Backfill Diagrams.
All Manholes In Graded Areas Shall Be Built To Stage I And Finished After All Grading Operations Are Substantially Completed.
* But Not Less Than 6 Inches Above Highest Pipe.
"T" Thickness Of Shell Equals That Of Larger Diameter Pipe.
Optional Monolithic Or Precast Designs Permitted. Optional Designs Shall Be Signed & Sealed By A Registered Professional Engineer.

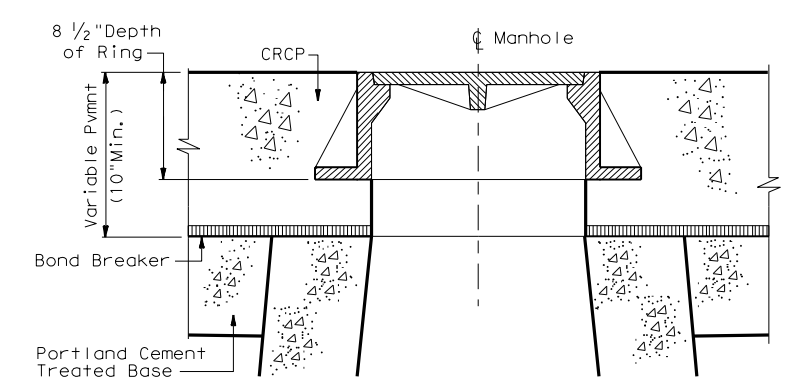


Heavy Duty 30" ID Ring as Required. Vulcan No. V-1419 w/ribbed cover, Neenah No. R1740-BTX

RING AND COVER



TEMPORARY TIMBER COVER



RING AND COVER CAST MONOLITHICALLY WITH PAVEMENT

FOR DIRECT TRAFFIC



MANHOLES TYPE A & B

MH-A/B

| | | | | | |
|------------------------|-----------|-----------|-------------|-----------|------|
| FILE: STDD10.DGN | DN: TxDOT | CK: TxDOT | DW: TxDOT | CK: TxDOT | STD: |
| © TxDOT December 2006 | DIST | FED REG | PROJECT NO. | SHEET | |
| REVISIONS | HOU | 6 | | | |
| 3/15 MINOR CORRECTIONS | | | COUNTY | CONTROL | SECT |
| | | | JOB | HIGHWAY | |

d = Diameter
R = Radius

FILES\$