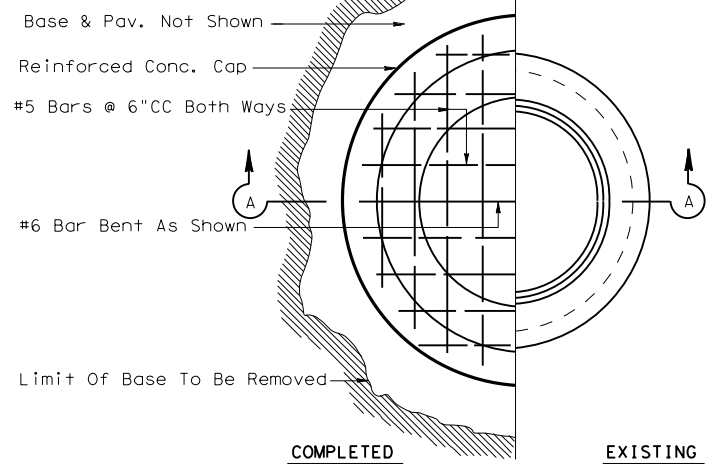
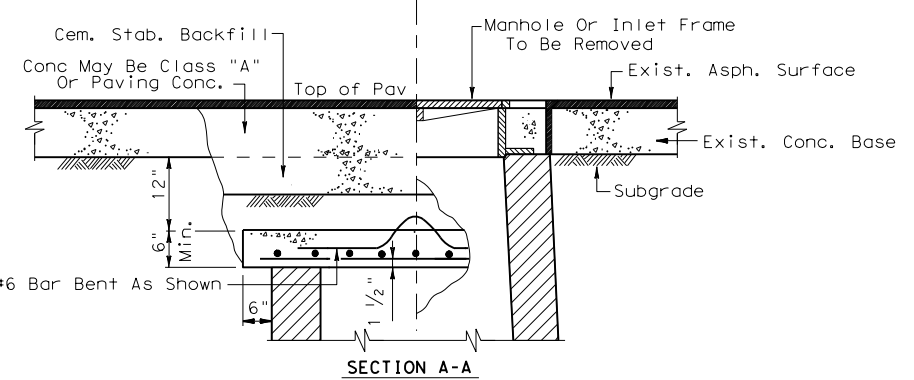


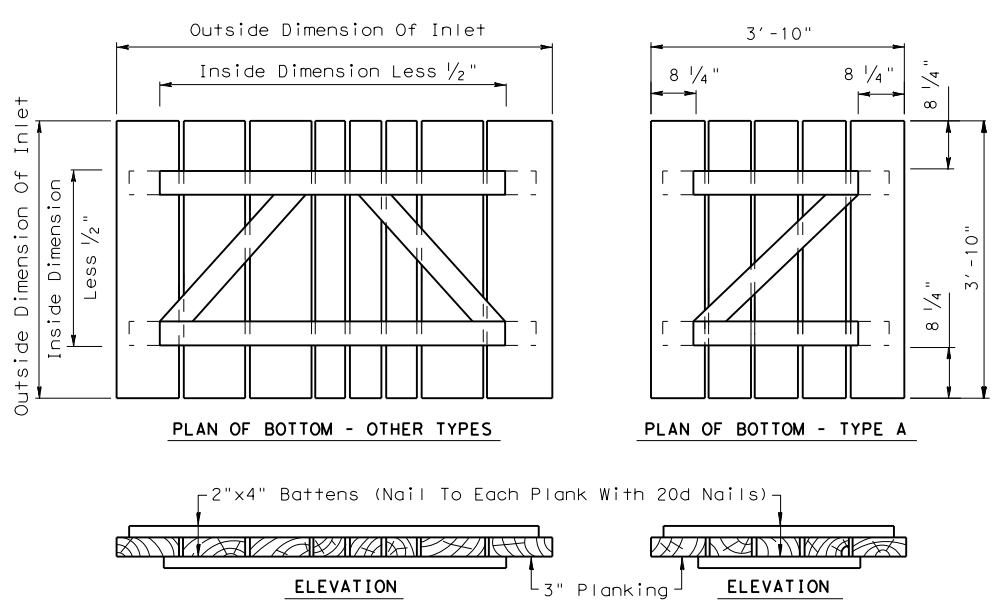
Note: No Conc Or Cem Stab Bkfl Required In Graded Areas.



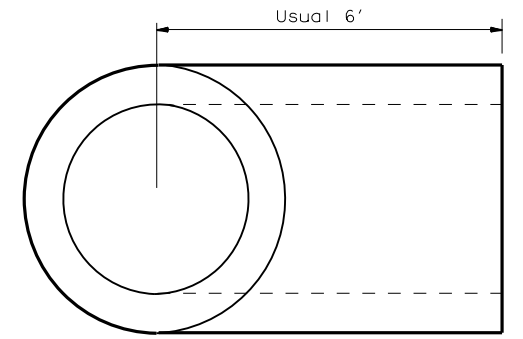
Note: Reinforced Conc. Cap Shall Be Precasted & Properly Cured Before Placing in Position.



DETAIL SHOWING METHOD OF CAPPING ABANDONED MANHOLES OR INLETS (GRADED OR PAVED AREAS)

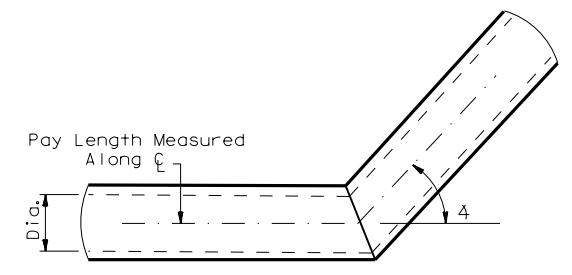


TEMPORARY COVERS FOR ALL TYPES OF INLETS



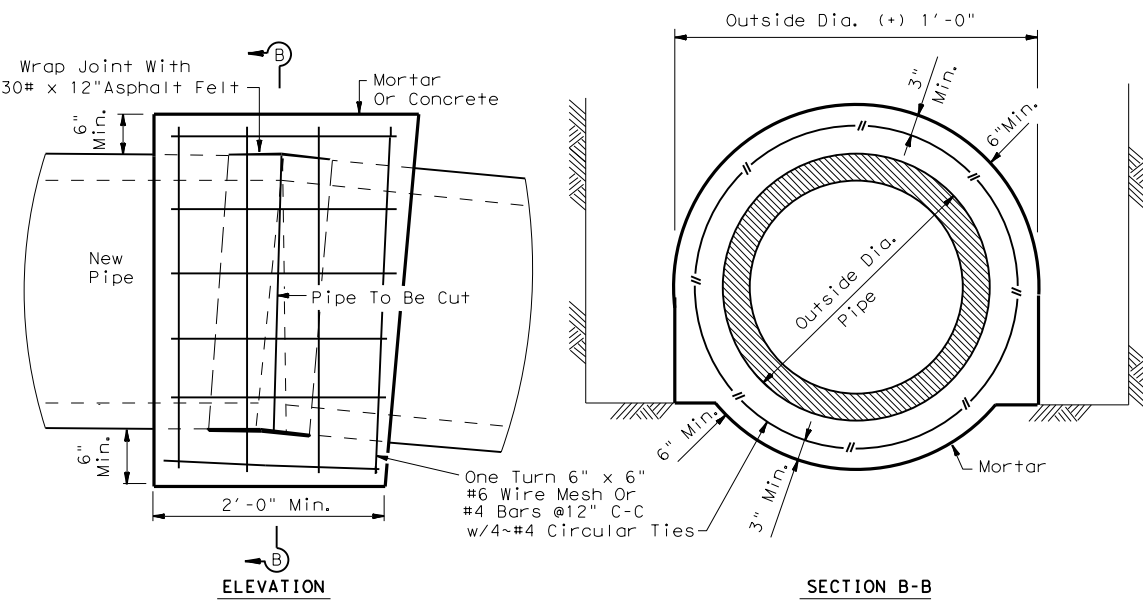
Note: Jointing Material Shall Conform To Requirements Of Item "Reinforced Concrete Pipe." Material For Tees Shall Conform To Requirements Of Item "Reinforced Concrete Tee." Payment For Tee To Be In Accordance With Item "Reinforced Concrete Pipe."

PRECAST STORM SEWER TEE

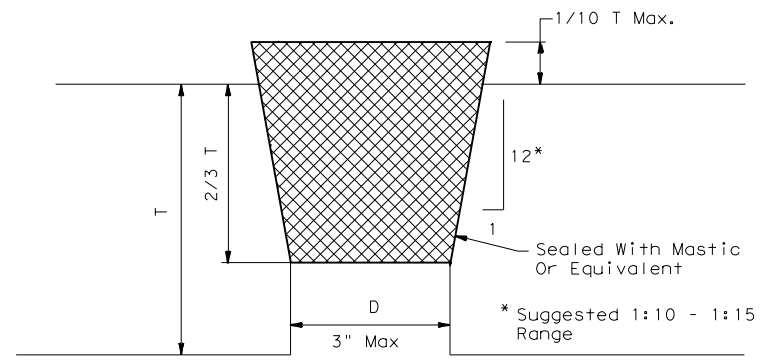


BENDING DETAIL

Note: Bending Of Proposed Pipe Sewer Or RCP In A Vertical & /Or Horizontal Plane Shall Be Accomplished By The Use Of A "Pipe Collar" Or A "Precast Elbow", As Approved By The Engineer. Price Of "Pipe Collar" Or, "Precast Elbow" Shall Be Subsidiary To The Unit Prices Bid For Item Reinforced Concrete Pipe. Pay Length Measurement To Be Along Horizontal C & Horizontal Plane Of Pipes.

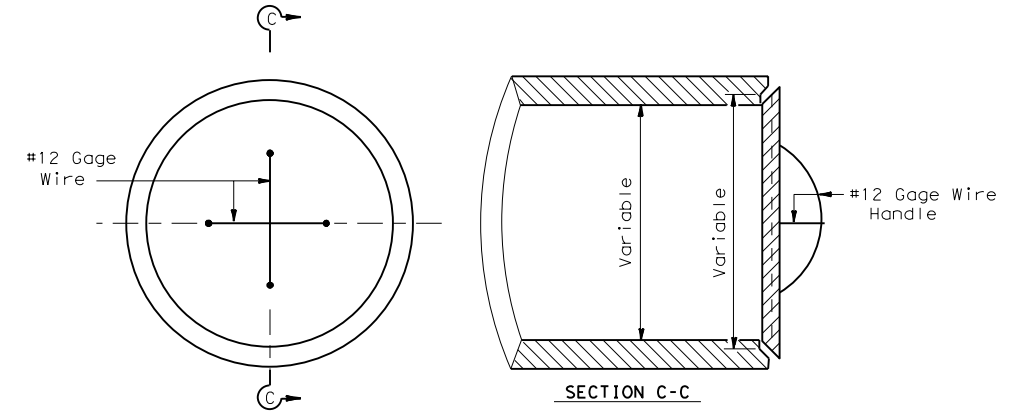


PIPE COLLAR DETAIL
For Horizontal Or Vertical Placement



T = Wall Thickness On Top Of Box Or Pipe
D = Diameter Of Lifting Hole
Minimum Length Of Plug Is 2/3 T +/-
Minimum Diameter At Bottom Of Plug = D - 1/8"
Maximum 1/10 T Of Plug Not Seated In Lifting Hole
Note: The Plug Shall Be Cast With The Same Taper As The Lifting Hole.

DETAIL OF PLUG FOR LIFTING HOLES IN RCB AND RCP



Note: The Price Of Plug Shall Be Subsidiary To The Unit Bid Price For Pipe Sewer Or RCP. Mortar Joints To Be Used As Directed By The Engineer. Removal Of The Existing Plugs For Storm Sewer Or RCP Conns. Shall Be Considered Incidental To Item "Excavation And Backfill For Structures."

Concrete Plug For End Of Pipe Culvert Or Sewer
CONCRETE PLUG FOR PIPE

Texas Department of Transportation
Houston District (Bridge)

MISCELLANEOUS SEWER DETAILS

MSD

FILE: STDD11.DGN	DN: TxDOT	CK: TxDOT	DW: TxDOT	CK:
© TxDOT Mar 2004	DISTRICT	FED REG	PROJECT NO.	SHEET
REVISIONS	HOU	6		
3/2015 2014 Specs	COUNTY	CONTROL	SECT	JOB
				HIGHWAY

STDD11.DGN

d = Diameter
R = Radius