

**ESTIMATED QUANTITIES**

ITEM	UNIT	QUANTITY
Jct Box (COMPL) (SPL)	EA	1
* Class C Conc	CY	XX.X

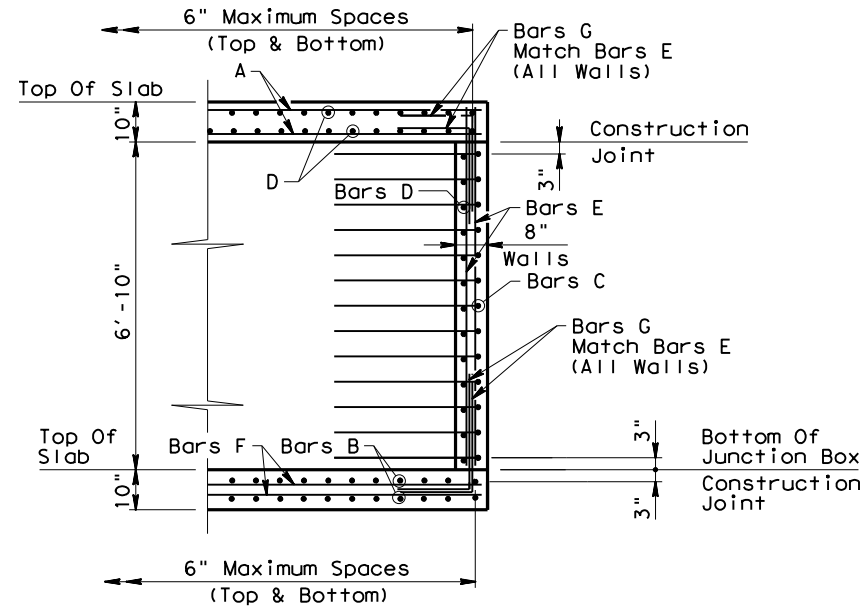
\* For Contractor's information only.

**GENERAL NOTES:**

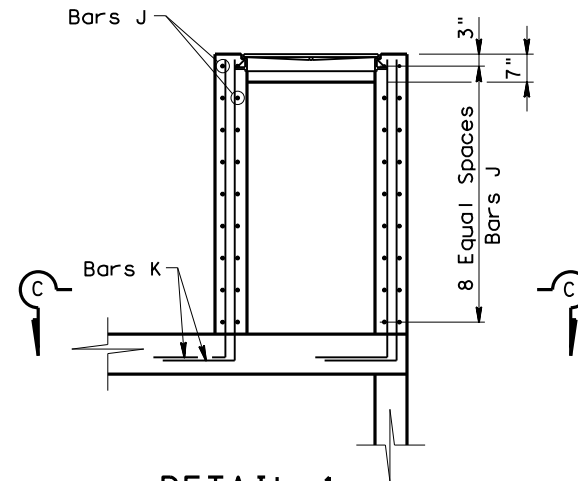
Ring and cover shall conform to the requirements of AASHTO M306, "Standard Specification for Drainage Structure Castings". Materials shall conform to ASTM A48, Class 35B for gray iron castings or ASTM A536, Grade 65-45-12 for ductile iron castings. Aluminum alloy castings shall not be permitted.

**BAR TABLE**

BARS	SIZE
A	#6
B	#5
C	#5
D	#5
E	#5
F	#6
G	#5
H	#5
J	#5
K	#5
M	#5

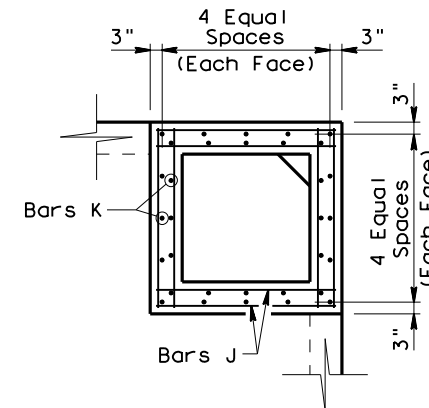


**TYPICAL REINFORCING DETAIL**

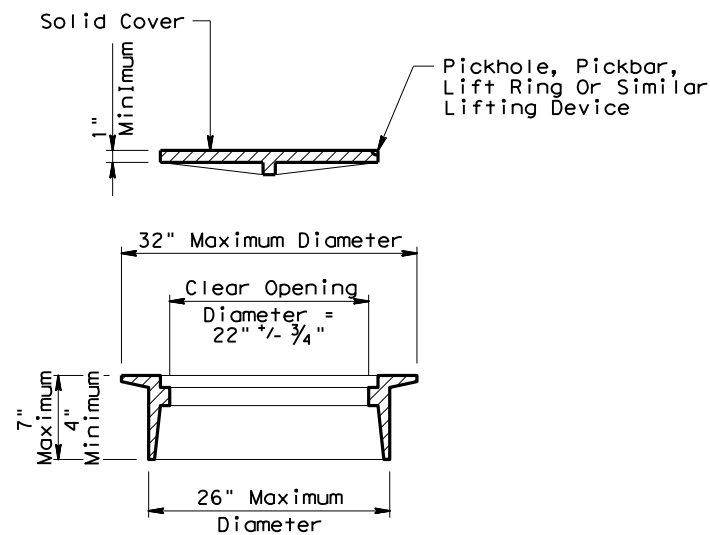
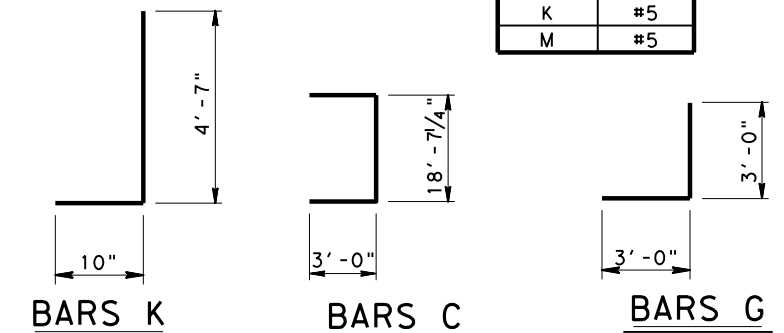


**DETAIL 1**

NOTE: Orient Bar K Tails Within Exterior Walls

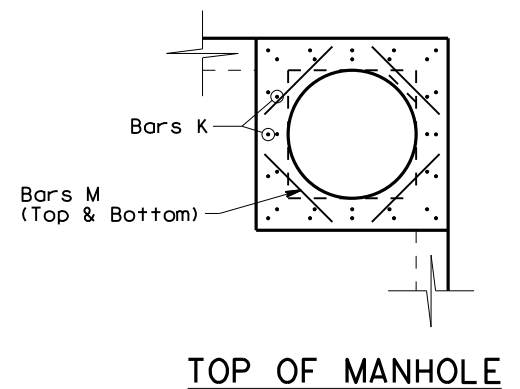


**SECTION C-C**



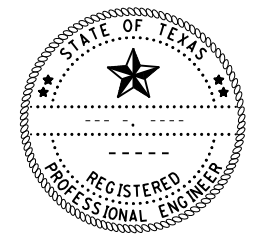
**RING AND COVER DETAILS**

Approximate Weight = 245 lbs.



**TOP OF MANHOLE**

**EXAMPLE ONLY  
(NOT TO BE USED AS A STANDARD)**



**JUNCTION BOX DETAILS  
JB-XXX  
(STATION XXX.XX.XX)**

FILE: jbd.dgn	DN:	CK:	DW:	CK:
© TXDOT SEPT., 2005	DISTRICT	FED REG	PROJECT NUMBER	SHEET
REVISIONS	HOU	6		
3/2015 2014 SPECS	COUNTY	CONTROL	SECT	JOB
				HIGHWAY