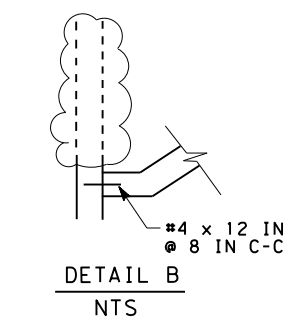
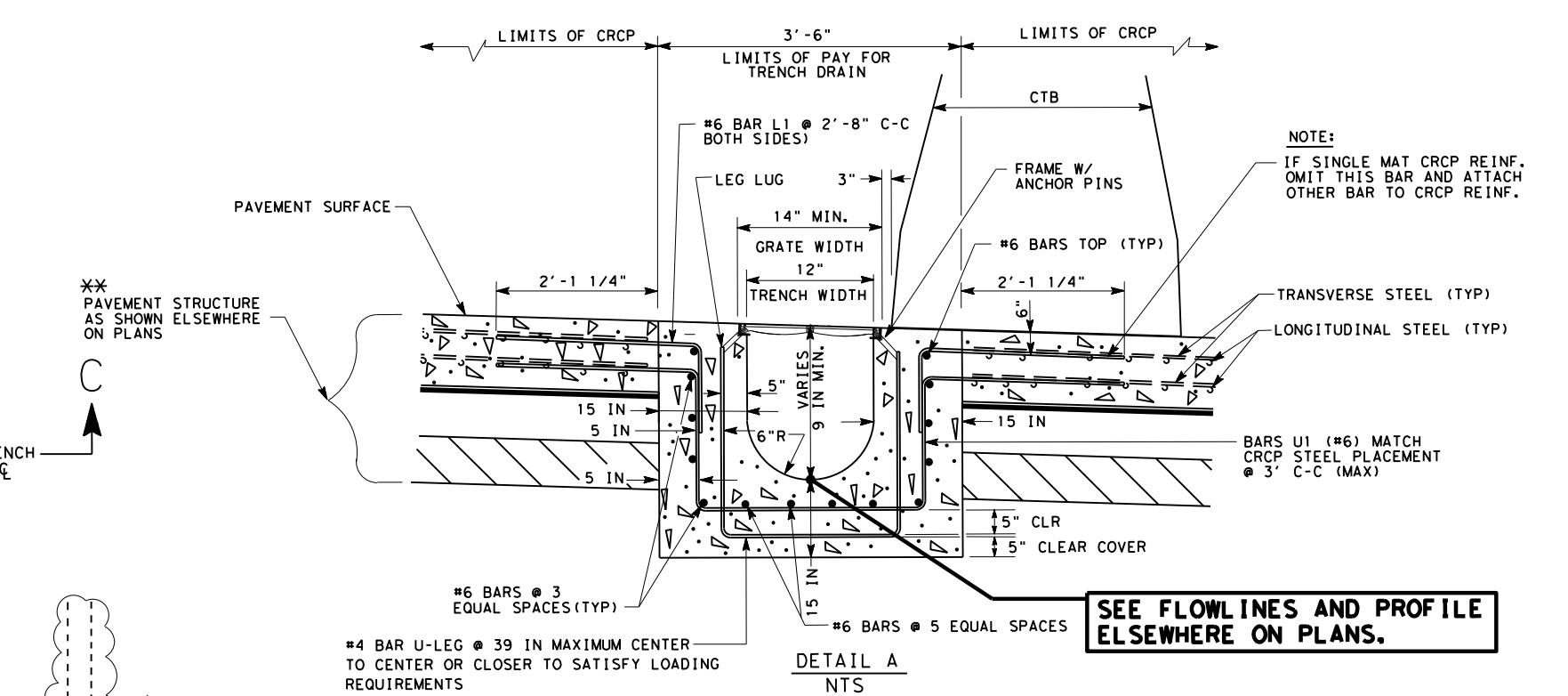


- NOTES**
1. THIS STANDARD IS TO BE USED IN CONJUNCTION WITH SPECIAL SPECIFICATION, 4008, "TRENCH DRAIN."
 2. PROPRIETARY TRENCH DRAIN SYSTEMS ARE ALLOWED. SUBMIT PRE-CONSTRUCTION DRAWINGS WITH ENOUGH DETAIL TO SHOW HOW TO INTEGRATE INTO THE PLAN DETAILS. SUBMITTALS SHALL MEET MINIMUM REQUIREMENTS, AREAS, AND DIMENSIONS.

DESIGNER: SPECIAL SPECIFICATION REQUIRES 66% OPENING OF GRATE AREA. FOR SAFETY FACTOR, USE 33% OPENING ON HYDRAULIC CALCULATIONS.



- LEGEND**
- CRCP = CONTINUOUSLY REINFORCED CONCRETE PAVEMENT
 - (A) = MAXIMUM TRENCH DEPTH

SHEET 1 OF 2

Texas Department of Transportation
Houston District

TRENCH DRAIN DETAILS

TDD

FILE: STDD14g.DGN	DN: TxDOT	CK: TxDOT	DM: TxDOT	CK: TxDOT	STD:
© TxDOT Feb. 2010	DIST	FED REG	PROJECT NO.	SHEET	
REVISIONS	HOU	6			
11/11 ADDED MIN. TO 14" DIMENSION					
06/12 ADDED CALLOUT					
03/15 2014 SPECS	COUNTY	CONTROL	SECT	JOB	HIGHWAY

NOT TO SCALE