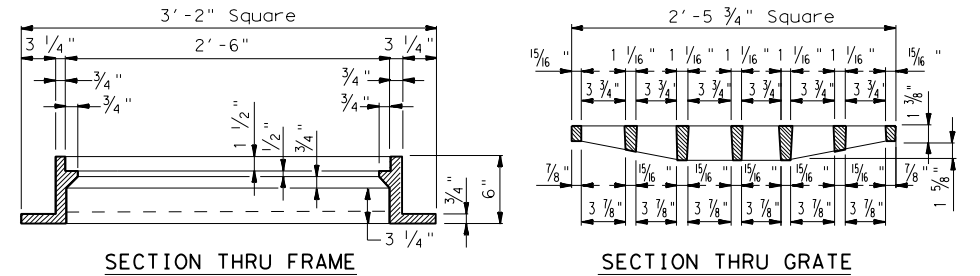
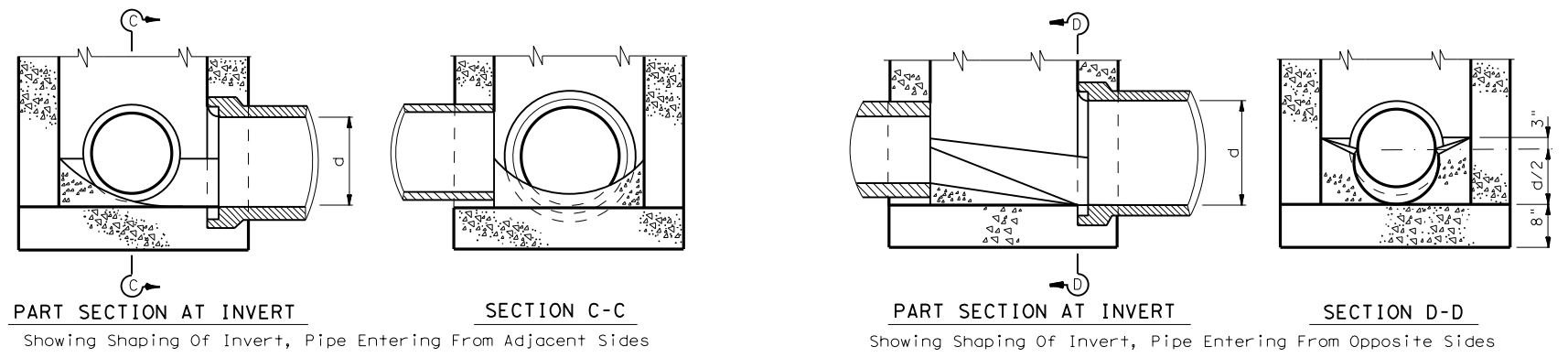


TYPE A INLET



FRAME AND GRATE

* But Not Less Than Six Inches Over Highest Entering Pipe.



PART SECTION AT INVERT
Showing Shaping Of Invert, Pipe Entering From Adjacent Sides

PART SECTION AT INVERT
Showing Shaping Of Invert, Pipe Entering From Opposite Sides

GENERAL NOTES:

Where Size Of Pipes Passing Thru Inlet Exceeds 30" Increase Inside Width To Outside Diameter Of Pipe Plus 1'-0" (OD + 1'-0").

See Standard or Detail Sheet For Excavation and Backfill Diagrams.

Inlets Shall Be Built To Stage I And Finished After All Grading Operations Are Substantially Completed.

Frames And Grates May Be Gray Cast Iron.

Shop Drawings Will Be Required For Precast Construction Of Inlets.

Neenah No. R3418-A
EJIW No. V-4880-1

NOT FOR TRAFFIC LOADS

Texas Department of Transportation
Houston District

INLET TYPE A

HIL-A

FILE: STDD4.DGN	DN: TXDOT	CK: TXDOT	DW: TXDOT	CK: TXDOT	STD:
© TXDOT 2014	DIST	FED REG	PROJECT NO.	SHEET	
REVISIONS	HOUS	6			
9/30/2016: Removed Manhole Steps	COUNTY	CONTROL	SECT	JOB	HIGHWAY

d = Diameter

STDD4.DGN