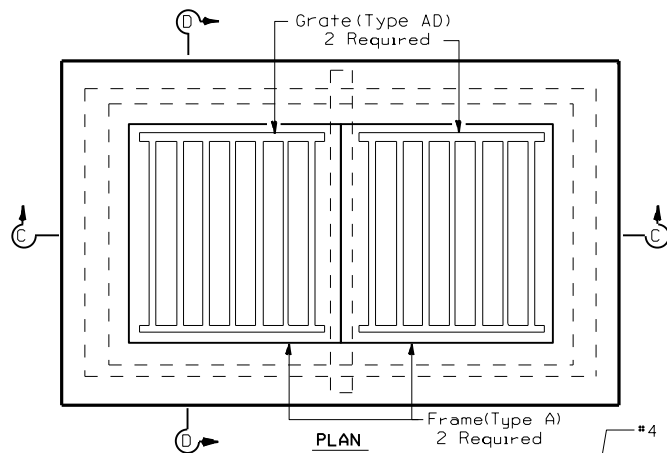
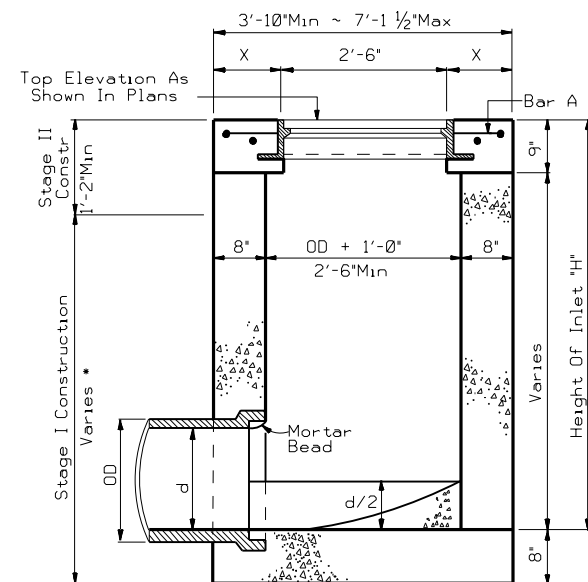


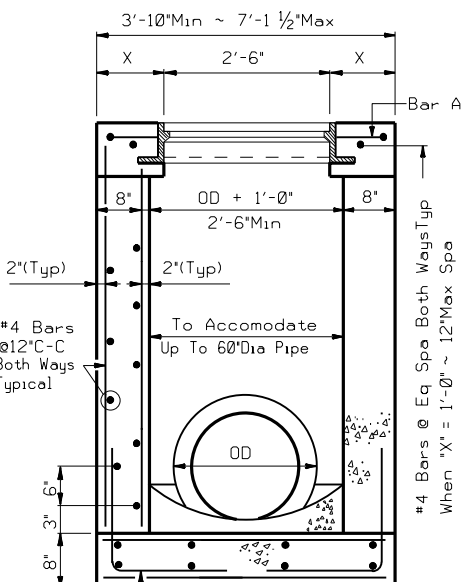
• But Not Less Than Six Inches Over Highest Entering Pipe.
X = 8" Min to 3'-9" Max



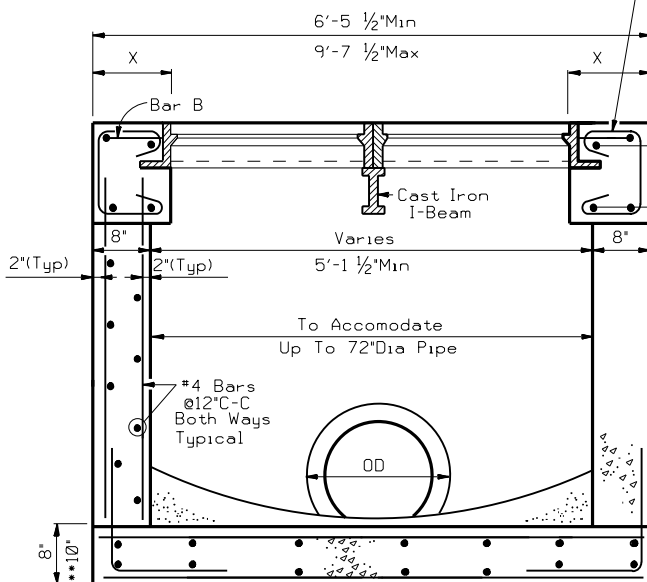
• But Not Less Than Six Inches Over Highest Entering Pipe.
• For Pipe Diameters 66" And Greater



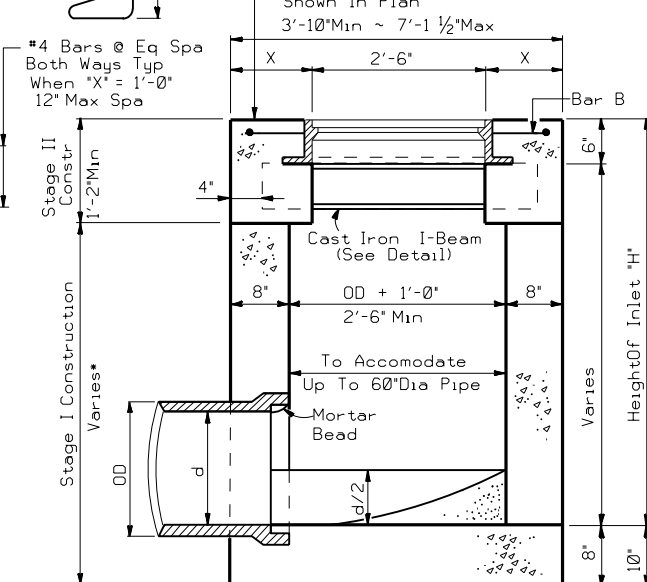
SECTION A-A



SECTION B-B



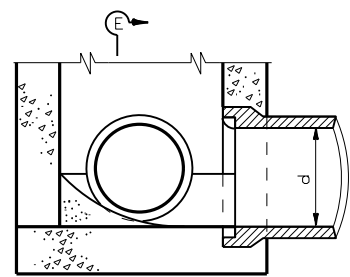
SECTION C-C



SECTION D-D

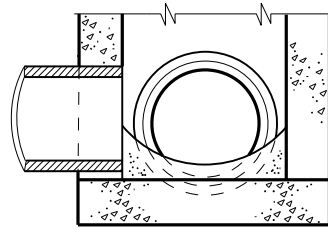
INLET TYPE AD

INLET TYPE AAD

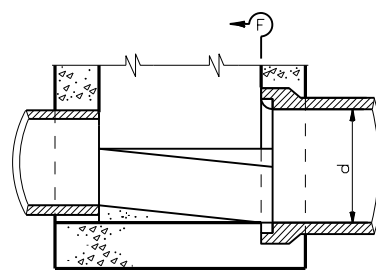


PART SECTION AT INVERT

Showing Shaping Of Invert, Pipe Entering From Adjacent Sides

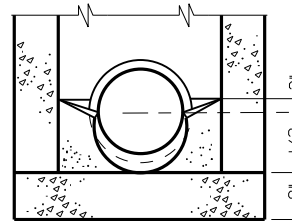


SECTION E-E

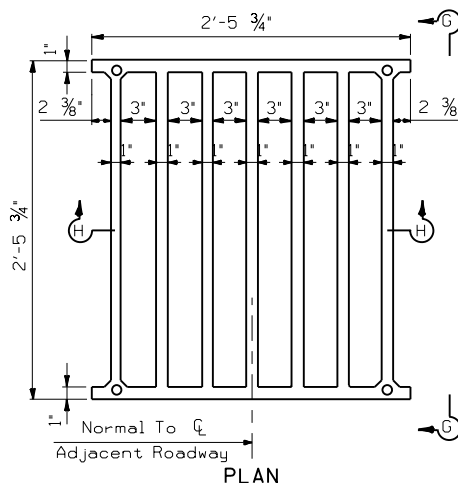


PART SECTION AT INVERT

Showing Shaping Of Invert, Pipe Entering From Opposite Sides



SECTION F-F

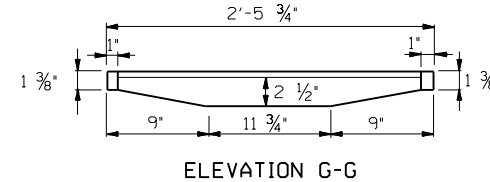


PLAN

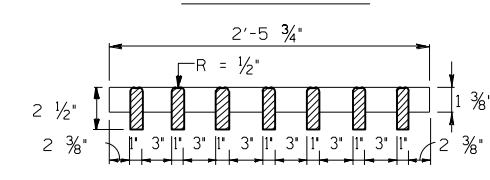
Provide 4 ~ Stainless Steel Hex Head Bolts per Grate

FRAME AND GRATE

Type AD ~ Neenah No.3418 or EJIW No.V-4880-2
Type AAD ~ Neenah No.3418-2 or EJIW No.V-4881-2

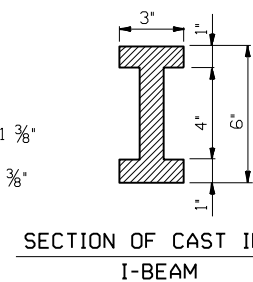


ELEVATION G-G



SECTION H-H

R = 1/2"



SECTION OF CAST IRON I-BEAM

d = Diameter
R = Radius

GENERAL NOTES:

Type AD Inlet contains a single frame with grate. Type AAD Inlet contains a double frame and double grate with an I-beam.

Frame and Grates may be gray cast iron.

The Furnishing And Installation Of Cast Iron I-Beams Shall Be Considered Incidental To Inlet (Comp) (Ty AAD) Or Inlet (Stage II) (Ty AAD) As The Case May Be.

Where Size Of Pipes Passing Thru Inlet Exceeds 30", Increase Inside Width To Diameter Of Pipe Plus 1'-0" (OD + 1'-0")

Cast Iron Manhole Steps (See Manhole Details) Spaced At 16" Centers And Located On Wall Specified By The Engineer Shall Be Provided And Installed Where "D" Exceeds 5'-0".

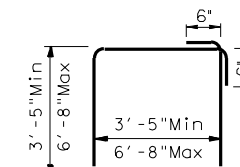
See Standard or Detail Sheet For Excavation and Backfill Diagrams.

Type AD & AAD Inlets Shall Be Built To Stage I And Finished After All Grading Operations Are Substantially Completed.

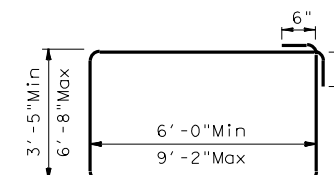
Shop Drawings Will Be Required For Precast Construction Of Inlets.

Upon installation of the grates the threads of the bolts shall be coated with thread lock type adhesive (Lockite or equal). Reapply thread lock adhesive each time grates are removed.

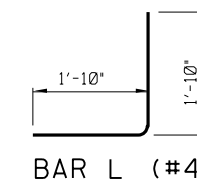
Bolted grates and frames are a matched set, do not unbolt without "Match Marking" so that grates and frames are re-installed as originally built.



BAR A (#4)



BAR B (#4)



BAR L (#4)

NOT FOR TRAFFIC LOADS



INLETS TYPE AD & AAD

HIL-AD/AAD

FILE:	STDD5.DGN	DN:	TxDOT	CK:	TxDOT	DW:	TxDOT	CK:	TxDOT	STD:
© TxDOT	2014	DIST:	HOUS	FED REG:	6	PROJECT NO.:		SHEET:		
REVISIONS		COUNTY:		CONTROL:		SECT:		JOB:		HIGHWAY: