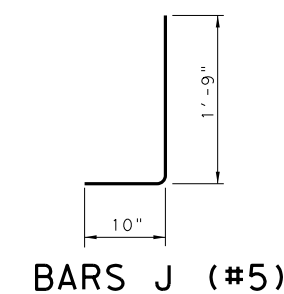
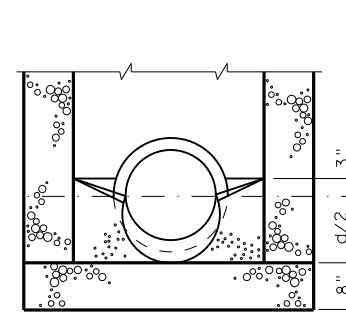
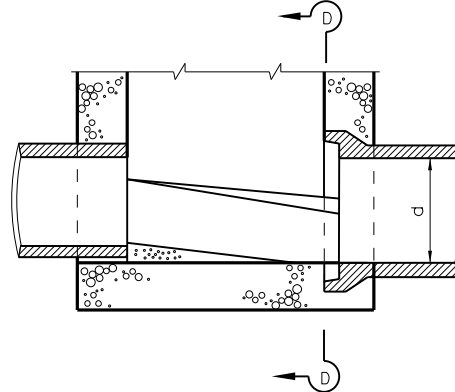
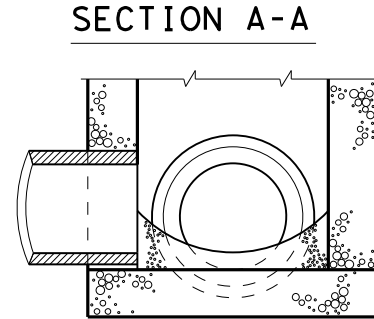
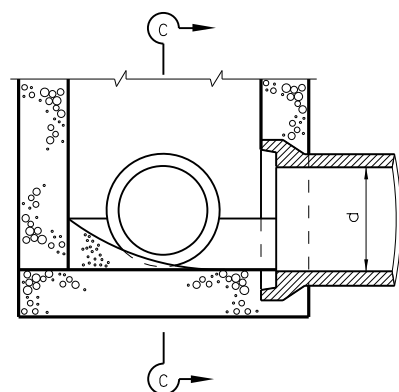


GENERAL NOTES:

All steel is ASTM-A36 and shall be galvanized after fabrication.
 Cost Of Furnishing And Installing Frames, Grates, Additional Pavement Reinforcing, Roofing Felt And Polyethylene Foam Shall Be Included In The Unit Price Bid For The Type Of Inlet Selected.

All Concrete Shall Be Class C.
 Shop Drawings Will Be Required For Precast Construction Of Inlets.



d = Diameter

FOR TRAFFIC LOADS



INLET TYPE AZ2G

HIL-AZ2G

FILE: STDD7.DGN	DN: TxDOT	CK: TxDOT	DW: TxDOT	CK: TxDOT	STD:
© TxDOT Feb 2010	DIST	FED REG	PROJECT NO.	SHEET	
REVISIONS	HOUS	6			
COUNTY		CONTROL	SECT	JOB	HIGHWAY