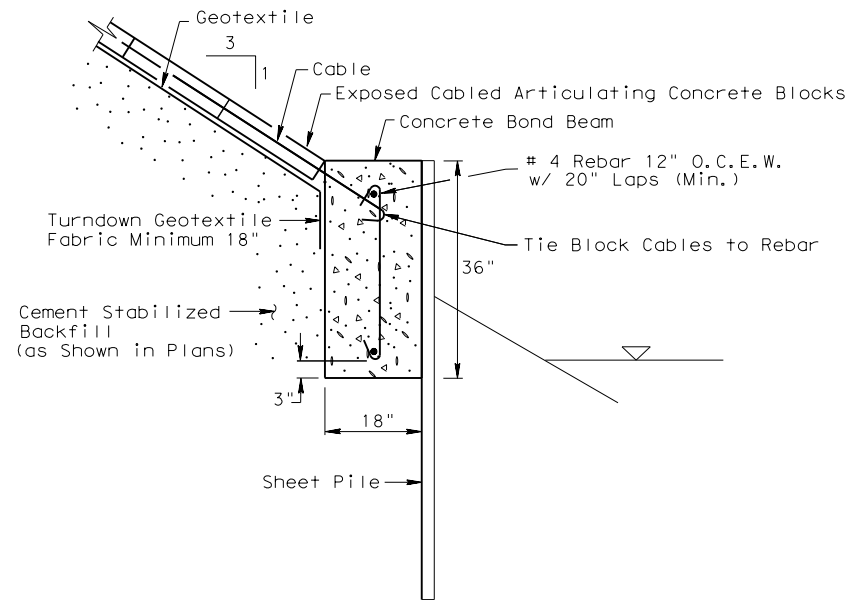
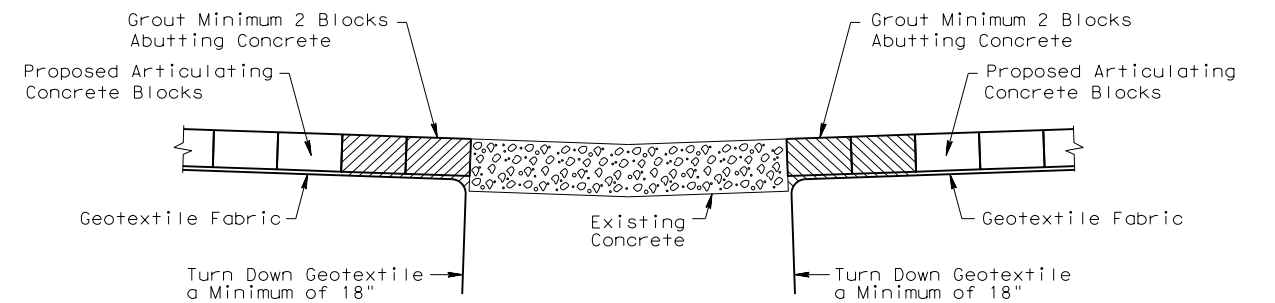


**CHANNEL DETAIL**



**STANDARD 3 : 1 SLOPE AND BOND BEAM DETAIL**

**CABLE DETAIL FOR USE WITH CABLE DESIGN**



**ABUTTING EXISTING CONCRETE DETAIL**

- Note:
1. For X and Y dimensions, see Plans For details.
  2. Backfill voids between blocks with topsoil and seed for vegetation.
  3. Geotextile fabric type to be as shown in plans.

**INTERLOCKING ARTICULATING  
CONCRETE BLOCKS**

**IACB**

FILE:	STDE2.DGN	DN:	TxDot	CK:	TxDot	DW:	TxDot	CK:	TxDot
©	TxDOT	MARCH	2004	DIST	FED REG	PROJECT NO.		SHEET	
REVISIONS		HOU	6	COUNTY		CONTROL	SECT	JOB	HIGHWAY
3/2015 2014 SPECS									

STDE2B.DGN