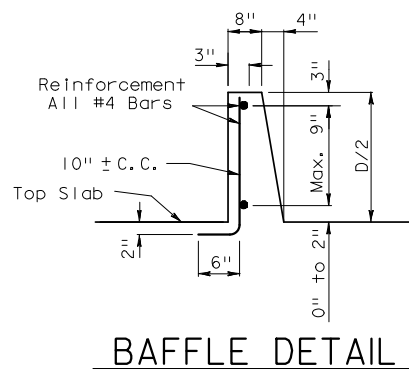
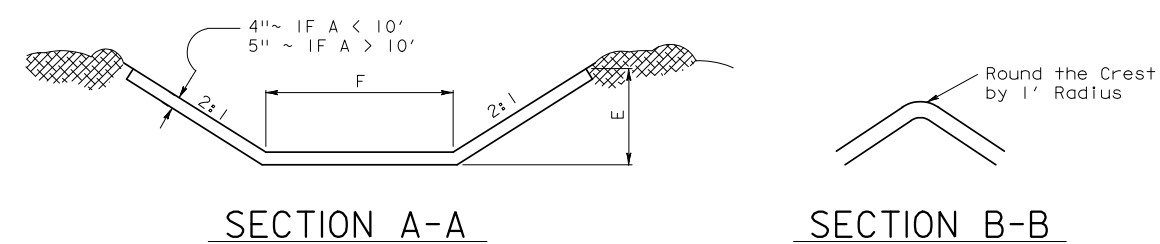
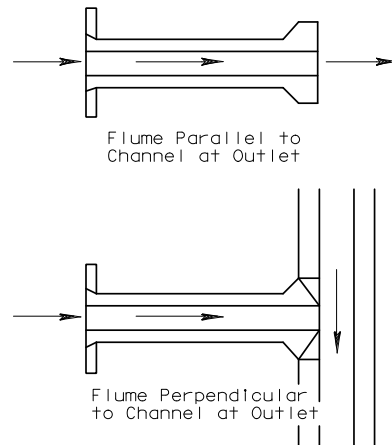
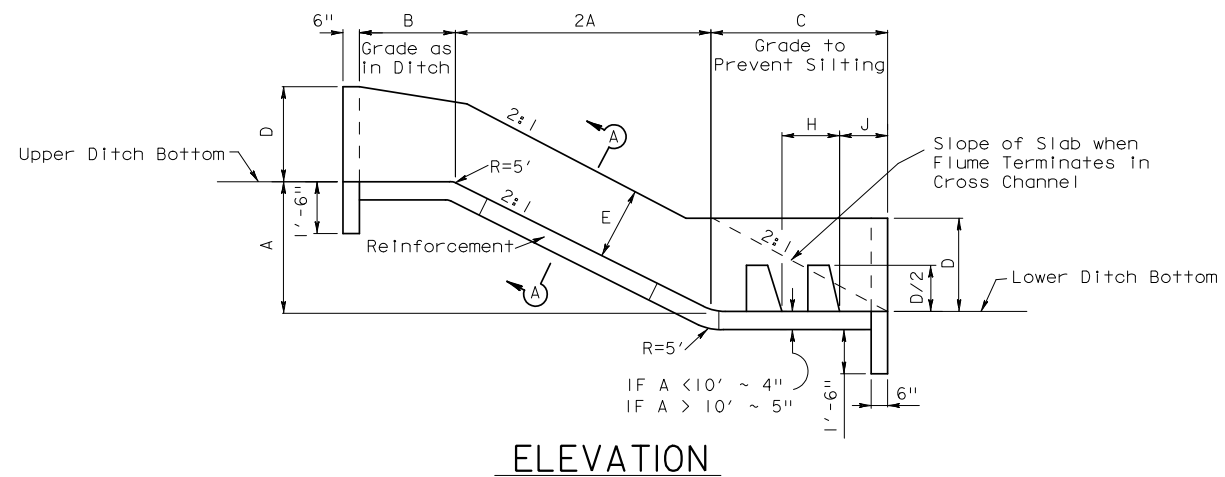


VARIABLE DIMENSIONS		FLUME QUANTITIES (CLASS B CONC. C.Y.)													
		TY A CAP. = 17.8 CFS		TY B CAP. = 29.5 CFS		TY C CAP. = 40.6 CFS		TY D CAP. = 61.0 CFS		TY E CAP. = 81.3 CFS		TY F CAP. = 135 CFS		TY G CAP. = 172 CFS	
A	2A	PERP.	PAR.	PERP.	PAR.	PERP.	PAR.	PERP.	PAR.	PERP.	PAR.	PERP.	PAR.	PERP.	PAR.
2'-0"	4'-0"	2.491	2.324	3.061	2.839	3.596	3.373	4.453	4.120	4.998	4.665	6.249	5.804	7.049	6.604
2'-6"	5'-0"	2.615	2.449	3.208	2.987	3.771	3.546	4.647	4.314	5.220	4.886	6.517	6.072	7.344	6.900
3'-0"	6'-0"	2.740	2.573	3.356	3.135	3.946	3.724	4.842	4.508	5.441	5.108	6.785	6.340	7.640	7.196
3'-6"	7'-0"	2.865	2.698	3.504	3.282	4.122	3.900	5.036	4.702	5.663	5.330	7.053	6.608	7.936	7.491
4'-0"	8'-0"	2.989	2.823	3.652	3.430	4.297	4.075	5.230	4.896	5.885	5.552	7.321	6.876	8.231	7.787
4'-6"	9'-0"	3.114	2.947	3.799	3.578	4.473	4.251	5.242	5.091	6.107	5.773	7.589	7.144	8.527	8.083
5'-0"	10'-0"	3.239	3.072	3.947	3.726	4.648	4.426	5.618	5.285	6.328	5.995	7.857	7.412	8.823	8.378
5'-6"	11'-0"	3.363	3.197	4.095	3.874	4.824	4.602	5.812	5.479	6.550	6.217	8.125	7.680	9.118	8.674
6'-0"	12'-0"	3.488	3.321	4.243	4.022	4.999	4.777	6.006	5.673	6.772	6.439	8.394	7.949	9.414	8.970
6'-6"	13'-0"	3.613	3.446	4.391	4.169	5.175	4.952	6.201	5.867	6.994	6.660	8.662	8.217	9.710	9.265
7'-0"	14'-0"	3.737	3.571	4.538	4.317	5.350	5.128	6.395	6.061	7.215	6.882	8.930	8.485	10.006	9.561
7'-6"	15'-0"	3.862	3.695	4.686	4.465	5.526	5.303	6.589	6.255	7.437	7.104	9.198	8.753	10.301	9.857
8'-0"	16'-0"	3.987	3.820	4.834	4.613	5.701	5.479	6.783	6.450	7.659	7.326	9.466	9.020	10.597	10.152
8'-6"	17'-0"	4.111	3.945	4.982	4.761	5.876	5.654	6.977	6.644	7.881	7.547	9.734	9.289	10.893	10.448
9'-0"	18'-0"	4.236	4.070	5.129	4.909	6.052	5.830	7.171	6.838	8.103	7.769	10.002	9.557	11.188	10.744
9'-6"	19'-0"	4.361	4.194	5.278	5.057	6.227	6.005	7.366	7.032	8.324	7.991	10.270	9.825	11.484	11.040
10'-0"	20'-0"	4.486	4.319	5.426	5.204	6.403	6.181	7.560	7.226	8.546	8.213	10.538	10.093	11.780	11.335

DIMENSION	FLUME TYPE						
	TY A	TY B	TY C	TY D	TY E	TY F	TY G
B	2'-6"	2'-6"	3'-0"	3'-0"	3'-6"	4'-0"	4'-6"
C	4'-6"	4'-9"	5'-0"	5'-6"	5'-6"	6'-0"	6'-0"
D	1'-6"	2'-0"	2'-0"	3'-0"	3'-0"	4'-0"	4'-0"
E	1'-1/2"	1'-6"	1'-6"	2'-3"	2'-3"	3'-0"	3'-0"
F	4'-0"	4'-0"	6'-0"	4'-0"	6'-0"	6'-0"	8'-0"
G	2'-6"	2'-6"	3'-0"	3'-0"	3'-0"	3'-0"	3'-0"
H	2'-0"	2'-3"	2'-6"	2'-6"	2'-6"	3'-0"	3'-0"
J	1'-6"	1'-6"	1'-6"	2'-0"	2'-0"	2'-0"	2'-0"

BAFFLE QUANTITIES	
FLUME	CONC. CY
TY A	0.15
TY B	0.21
TY C	0.27
TY D	0.33
TY E	0.44
TY F	0.61
TY G	0.73

SUMMARY OF FLUMES						
STATION TO STATION	SIDE	FLUME TYPE	HEIGHT A	CLASS B CONC.		
				BAFFLES CY	FLUME CY	TOTAL CY



THIS SHEET NEEDS TO BE SIGNED & SEALED

Texas Department of Transportation
Houston District

FLUME DETAILS

FD

FILE: STDE4.DGN	DN: TxDot	CK: TxDot	DW: TxDot	CK: TxDot
© TxDOT MARCH 2004	DIST	FED REG	PROJECT NO.	SHEET
REVISIONS	HOUSTON	6	COUNTY	CONTROL SECT JOB HIGHWAY

R = Radius
Dia = Diameter

STDE4.DGN