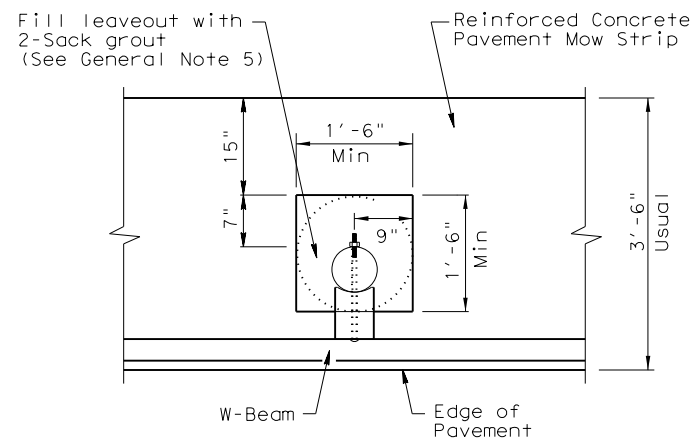
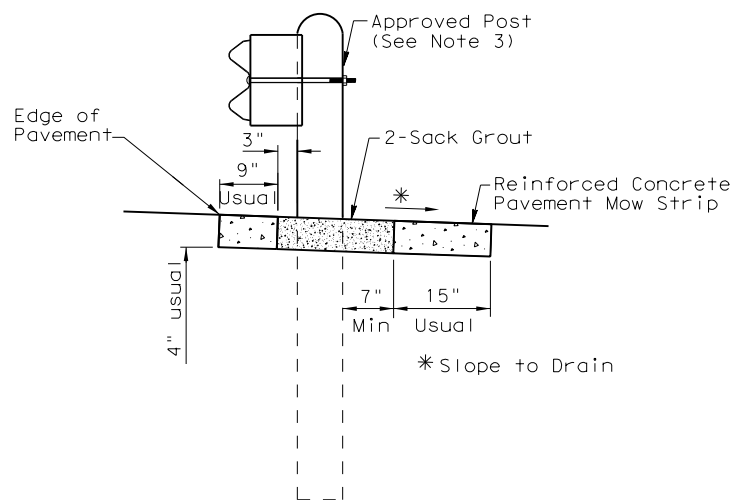
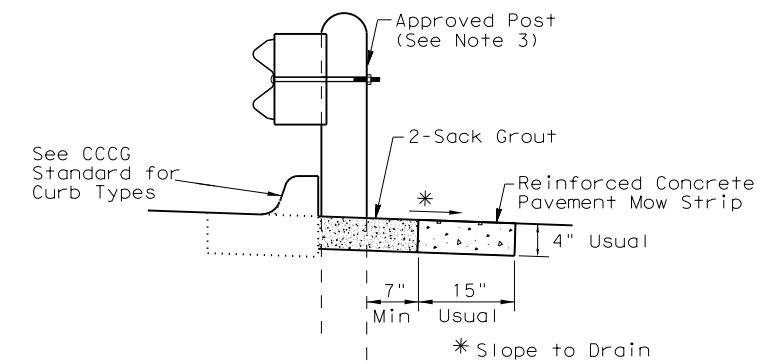
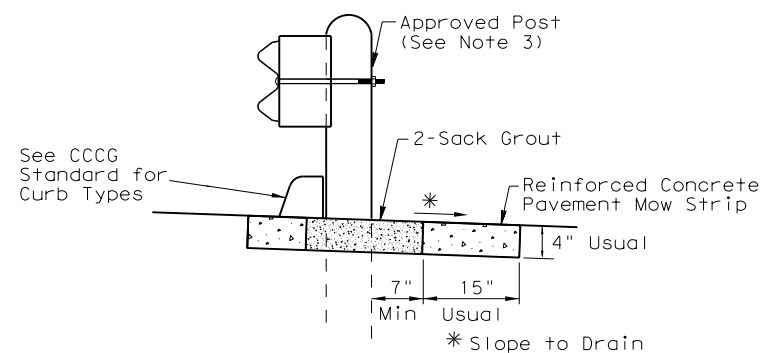
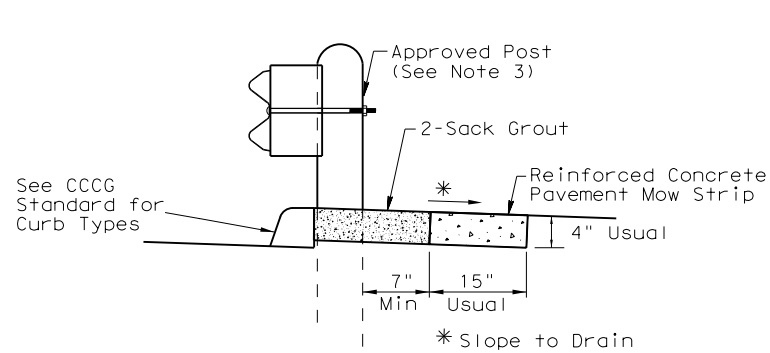


GENERAL NOTES

1. Place concrete riprap mow strips at all Metal Beam Guard Fence locations, and in accordance with Item 432, "Riprap". Use Class B Concrete, reinforced with No. 3 bars spaced at 18 in. centers each direction and 2 in. below the surface.
2. Provide a minimum of 7 in. leave out behind the post. Do not place concrete in the leave out.
3. The type of approved post is shown elsewhere on the plans. See the applicable standard sheets for additional details and information.
4. Other curb placement options may be used. Curbs are not considered part of the mow strip and are paid for under other pertinent bid items.
5. Fill the leave outs with no more than a 2-sack grout mixture and place in accordance with Section 421.2.7, "Mortar and Grout." Payment for furnishing and placing the grout mixture is subsidiary to the Item 432, "RIPRAP."
6. Place the mow strip the entire length of the guard fence plus any Terminal Anchor Section (TAS) or Single Guardrail Terminal (SGT) to 2 ft. beyond the face of the object marker at the end of the SGT. Do not allow concrete to adhere to the ground line strut shown on the SGT standard sheet.



MOW STRIP DETAIL

Reinforced Concrete Pavement Mow Strip with 18" x 18" or 18" dia. minimum leaveout.

MOW STRIP

MS

FILE:	DW:	CK:	DW:	CK:
© TxDOT 2014	DIST	FED REG	PROJECT NO.	SHEET
REVISIONS	HOU	6		
03/15 2014 SPECS	COUNTY	CONTROL	SECT	JOB
				HIGHWAY