

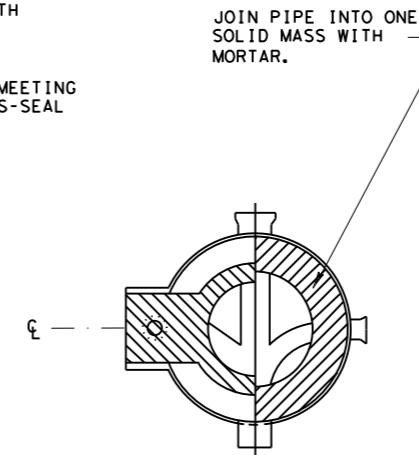
**FOUNDATION PLAN  
(PRECAST MANHOLE)**

**GENERAL NOTES:**

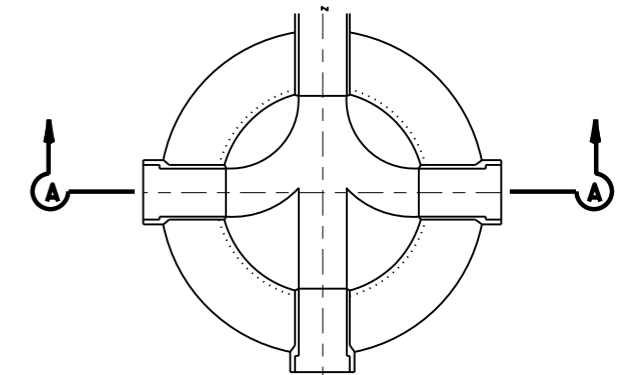
1. DEPTH OF MANHOLE DETERMINES SECTIONS REQUIRED.
2. THE MAXIMUM TOTAL HEIGHT OF THE ADJUSTMENT RINGS IS 1.5 FT.
3. INSTALL MANHOLE DROP AND INTERSECTING PIPES ONLY WHEN CALLED FOR IN THE PLAN AND PROFILE DRAWING.
4. ECCENTRIC PRECAST CONCRETE MANHOLE MAY BE USED.
5. FOR PRECAST SECTIONS, PROVIDE JOINTS BETWEEN SECTIONS, WITH O-RING GASKETS CONFORMING TO ASTM C 443.
6. WHERE RIGID JOINTS BETWEEN PIPE AND CAST-IN-PLACE MANHOLE BASE ARE USED, PROVIDE A POLYETHYLENE-ISOPRENE WATERSTOP MEETING PHYSICAL PROPERTY REQUIREMENTS OF ASTM C 923, SUCH AS PRES-SEAL WS SERIES, OR APPROVED EQUAL.

**GENERAL NOTES:**

7. CONSTRUCT MANHOLES IN GRADED AREAS TO STAGE I AND FINISHED AFTER GRADING OPERATIONS ARE SUBSTANTIALLY COMPLETE.
8. WHERE THE FLOWLINE OF A PIPE ENTERING A MANHOLE IS GREATER THAN 2 FT. ABOVE THE FLOWLINE OF THE MANHOLE, A STANDARD DROP AS DETAILED ON THIS SHEET IS REQUIRED. USE THE SAME DIAMETER FOR THE DROP PIPE AS THE CONNECTING INFLOW PIPE.
9. JOIN PIPES INTO SOLID MASS WITH MORTAR.

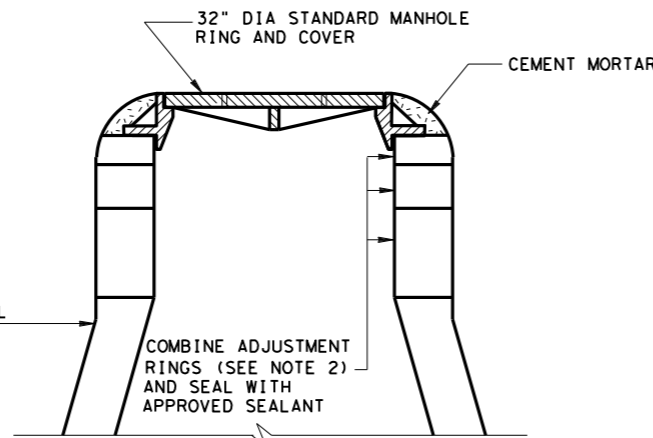


**SECTION A-B**

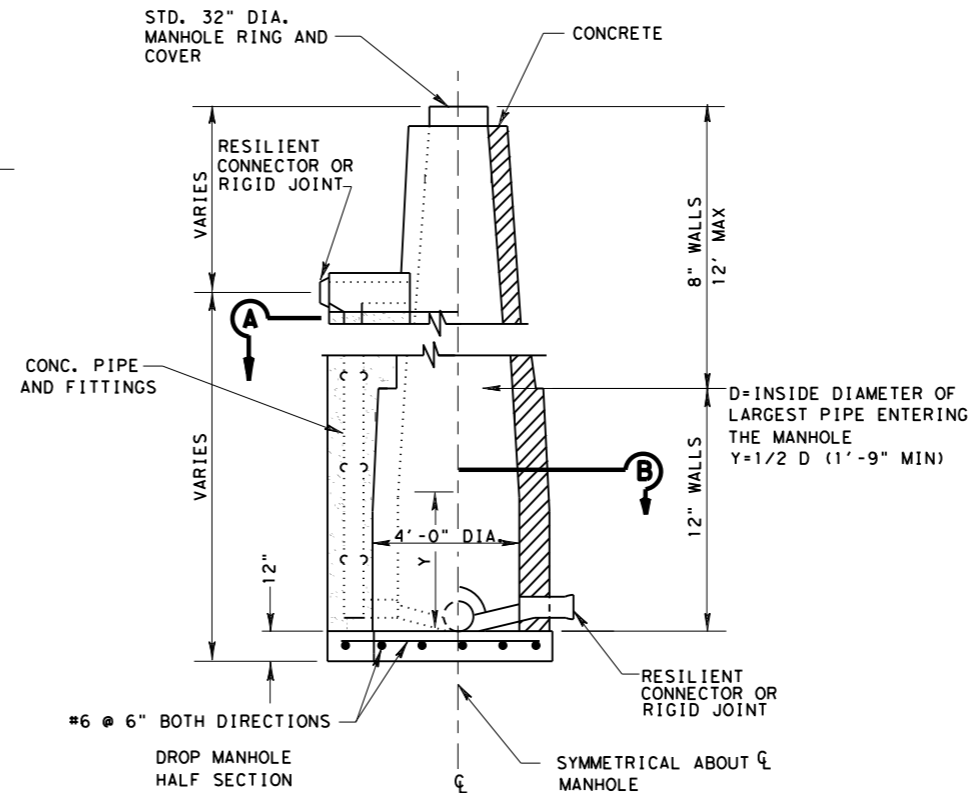


**SECTION B-B**

DETAIL OF MANHOLE IN A GRADED AREA



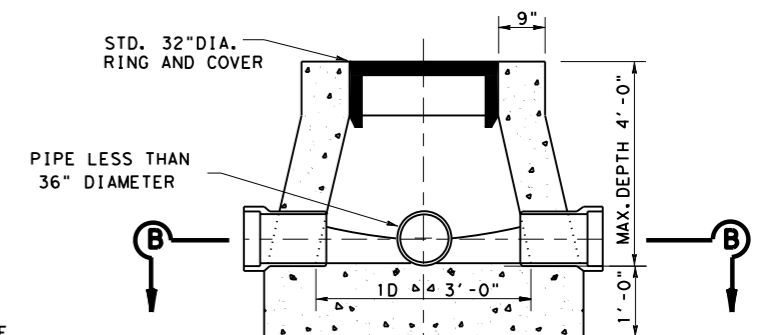
STD. 32" DIA. MANHOLE RING AND COVER



DROP MANHOLE HALF SECTION

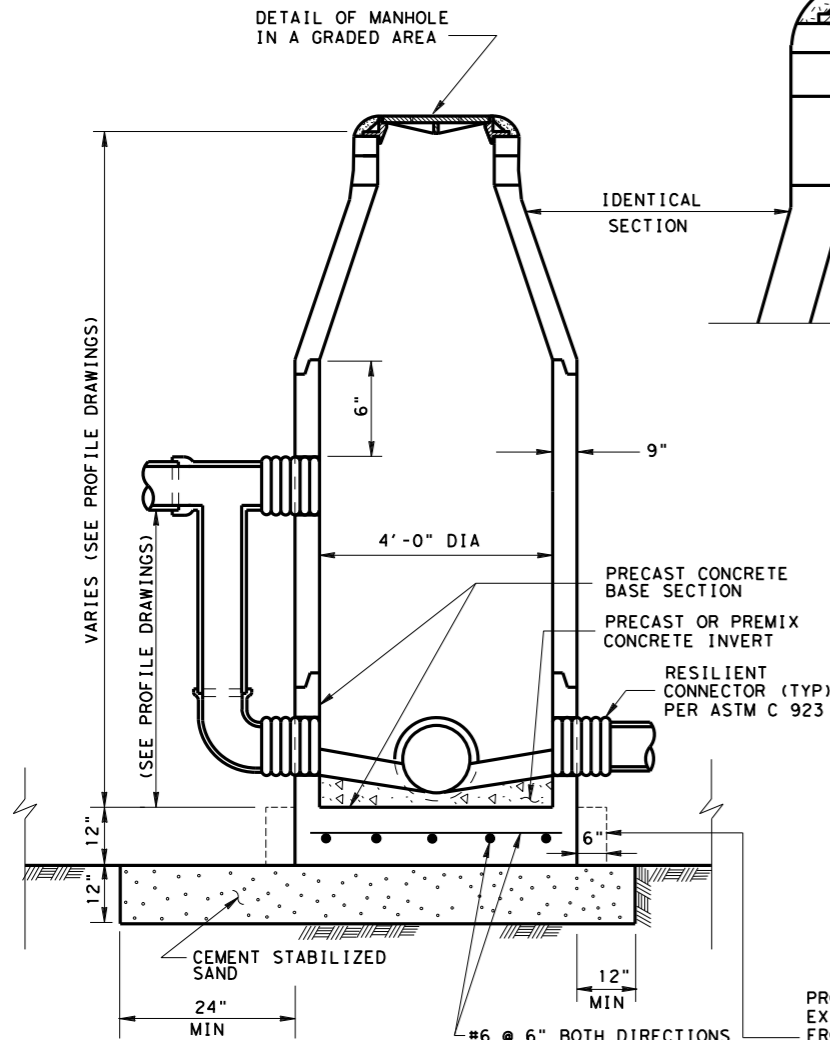
DROP MANHOLE INCLUDES ITEMS SHOWN EXCEPT SEWER MAIN, WHICH IS PAID FOR AS SANITARY SEWER PIPE

**MANHOLE TYPE I (CAST-IN-PLACE)**



**SECTION A-A**

**STANDARD SANITARY SEWER  
(MONOLITHIC OR CAST IN PLACE)  
MANHOLE TYPE 2**



**SECTION A-A**

**MANHOLE TYPE I (PRECAST)**

PROVIDE 6 IN. BASE EXTENSION FOR DEPTHS FROM MANHOLE COVER TO INVERT GREATER THAN 15 FT.

Texas Department of Transportation  
Houston District (Roadway)

**SANITARY SEWER  
DETAILS**

**SSD-I**

FILE: STDF1.DGN	DN: TxDot	CK: TxDot	DW: TxDot	CK: TxDot
© TxDOT MAY 2006	DIST	FED REG	PROJECT NO.	SHEET
REVISIONS	HOU	6		
12/2004			COUNTY	CONTROL SECT JOB HIGHWAY
06/2006				
03/2015				

2014 SPECS