

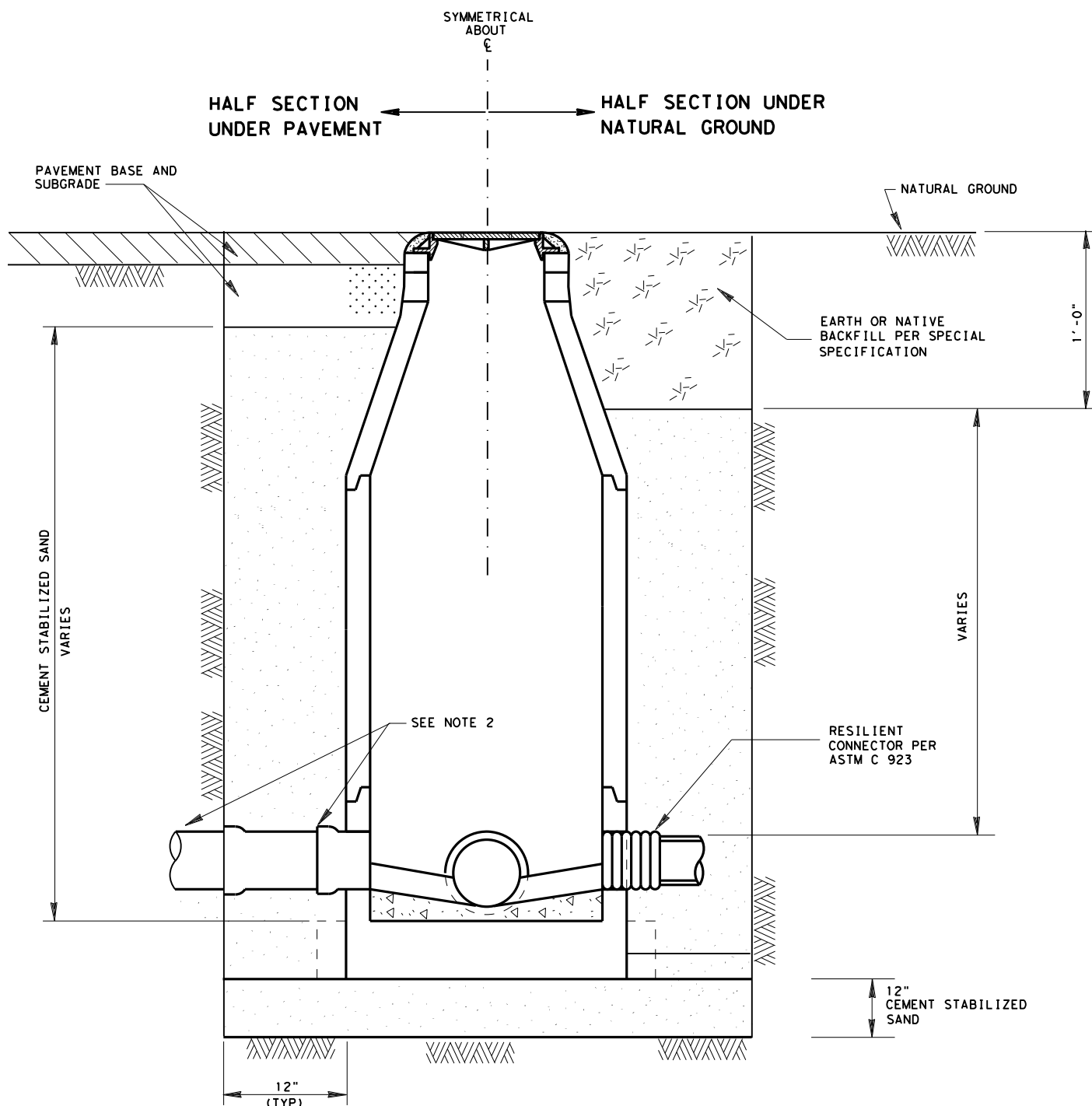
**NOTES:**

1. GROUTING THE MANHOLE STRUCTURE ANNULAR SPACE IS PERMITTED IN CASES WHERE INSUFFICIENT WORK SPACE EXISTS FOR PLACING AND COMPACTING CEMENT STABILIZED SAND.
2. ARRANGE PIPE JOINTS AS SHOWN WHEN USING RIGID CONNECTION TO CAST IN PLACE MANHOLE BASE.

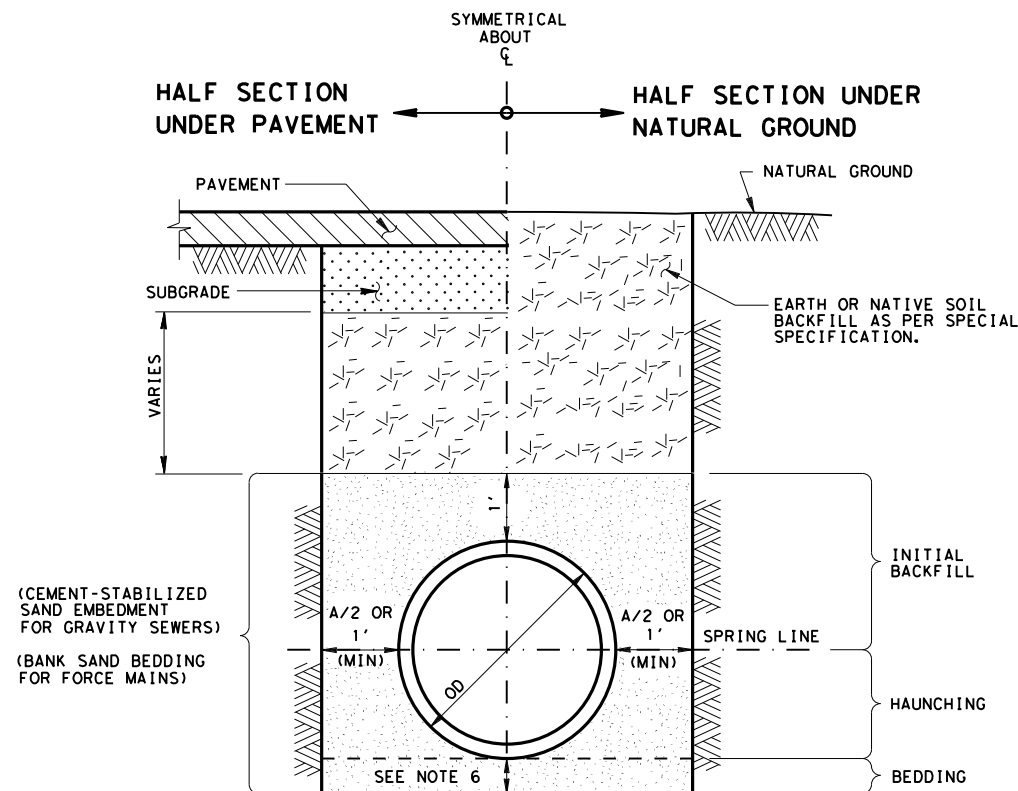
**NOTES:**

3. USE THIS DETAIL ONLY FOR DRY STABLE TRENCH CONDITIONS.
4. MIN. TRENCH WIDTH IS PIPE OD PLUS AN ALLOWANCE "A" FOR THE NOMINAL PIPE SIZE:
 

NOMINAL PIPE SIZE	"A"
LESS THAN 18 IN.	18 IN.
18 IN. TO 30 IN.	24 IN.
OVER 30 IN.	36 IN.
5. MAX TRENCH WIDTH IS THE MIN TRENCH WIDTH PLUS 24 IN. UNLESS OTHERWISE NOTED.
6. MINIMUM CEMENT STABILIZED SAND BEDDING IS THE GREATER OF 1/8 OD OR 6 IN.



**TYPICAL CROSS-SECTION  
SANITARY SEWER  
BACKFILL OF MANHOLES  
(PRECAST AND CAST-IN-PLACE)**



**TYPICAL CROSS-SECTION  
SANITARY SEWER  
EXCAVATION AND BACKFILL DIAGRAM  
DRY STABLE TRENCH  
NOT TO SCALE**

**SANITARY SEWER  
DETAILS  
SSD-2**

FILE#	STDF2.DGN	DN: TxDot	CK: TxDot	DW: TxDot	CK: TxDot
©	TxDOT	MAY 2006	DIST	FED REG	PROJECT NO.
REVISIONS	HOU	6	COUNTY	CONTROL	SECT
6/2006 3/15 2015 SPECS					JOB
					HIGHWAY