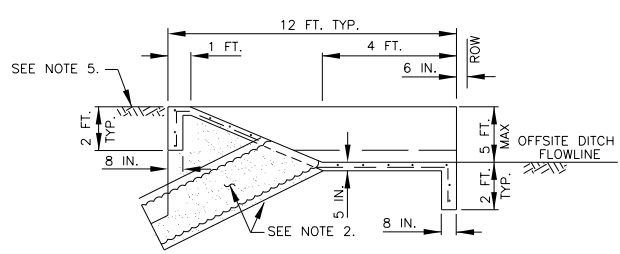
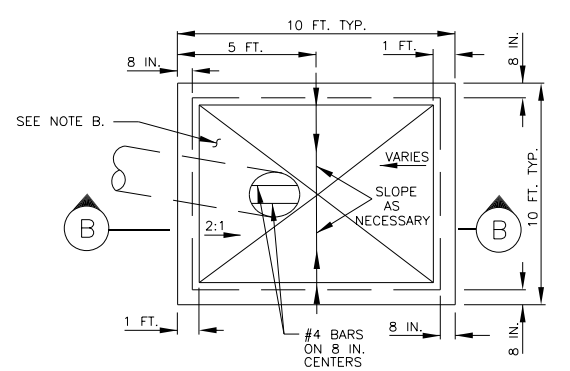


PLAN

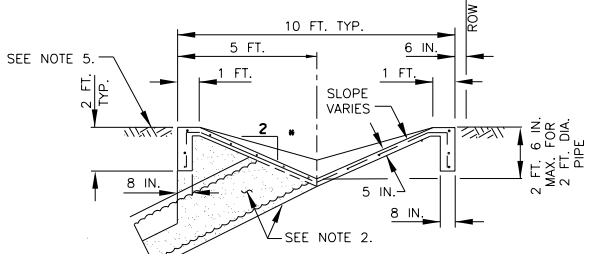


A SECTION

TYPICAL OFFSITE DITCH INTERCEPTOR STRUCTURE (42 INCH MAX.)

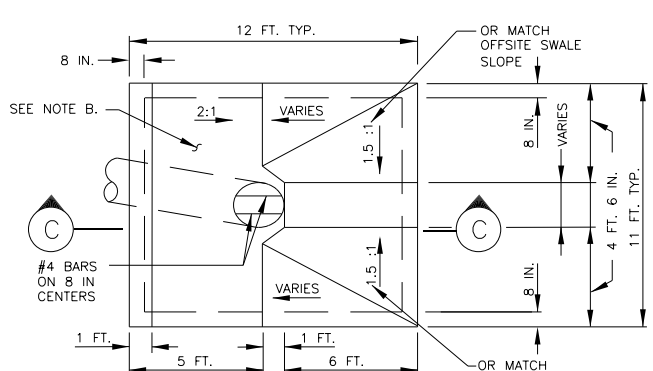


PLAN

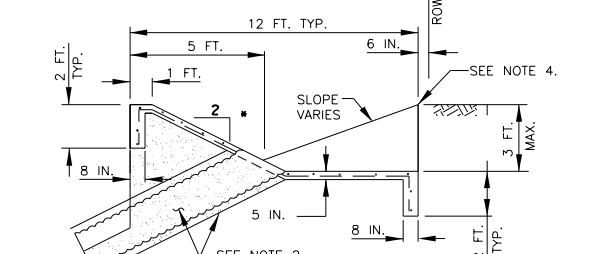


B SECTION

TYPICAL BACKSLOPE INTERCEPTOR STRUCTURE (24 INCH & 30 INCH ONLY)



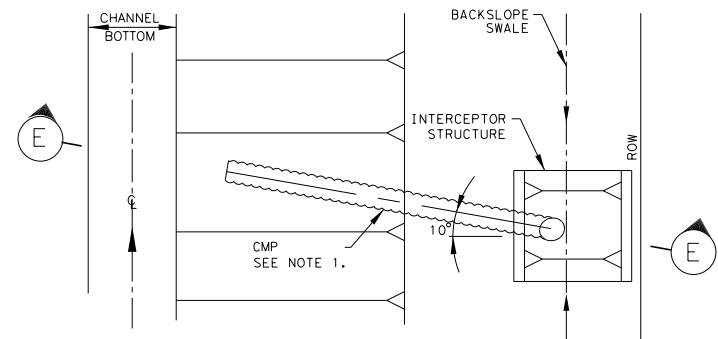
PLAN



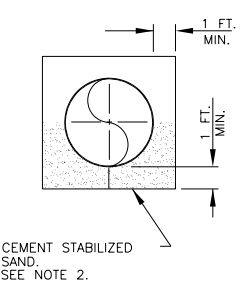
C SECTION

COMBINATION BACKSLOPE & OFFSITE DITCH INTERCEPTOR (42 INCH MAX.)

- GENERAL NOTES:**
- PLACE CORRUGATED METAL PIPE INTERCEPTOR OUTFALL PIPES IN ACCORDANCE WITH ITEM 460, "CORRUGATED METAL PIPE." WITHIN HCFCD ROW, USE MINIMUM 24" DIA, 16 GAUGE PIPE.
 - PROVIDE AND PLACE CEMENT STABILIZED BACKFILL AND STRUCTURAL EXCAVATION IN ACCORDANCE WITH ITEM 400, "EXCAVATION AND BACKFILL FOR STRUCTURES."
 - INSTALL STORM SEWER PLANT OUTFALLS, 48 INCHES DIAMETER OR LARGER WITH RIPRAP EROSION PROTECTION, DIMENSIONED AS SHOWN IN THE "TYPICAL STORM SEWER OUTFALL LAYOUT" DETAIL. EXCAVATE AND PLACE EMBANKMENT AND BACKFILL FOR STORM SEWER OUTFALLS IN ACCORDANCE WITH ITEM 400. "EXCAVATION AND BACKFILL FOR STRUCTURES."
 - PROVIDE AND PLACE CONCRETE IN ACCORDANCE WITH ITEM 420-6008 "CL A" CONCRETE (DITCH INTERCEPTOR STRUCTURE) (EA.)
 - INTERCEPTOR STRUCTURES:
 - ADJUST LENGTH AND WIDTH IN FIELD AS NECESSARY.
 - PROVIDE A 2 FT. DEEP X 8 IN. WIDE TOE WALL AROUND THE STRUCTURE.
 - STEEL REINFORCEMENT - #4 BARS (GRADE 40) AT 12 INCHES ON CENTER EACH WAY.
 - ANY INTERCEPTOR OUTFALL PIPE LARGER THAN MAXIMUM SIZE INDICATED REQUIRES A SEPARATE DETAIL.
 - MATCH TOP OF CONCRETE WITH NATURAL GROUND
 - SET THE FLOWLINE OF OUTFALL PIPES 1 FOOT ABOVE THE CHANNEL FLOWLINE OR 1 FOOT ABOVE THE NORMAL WATER LEVEL, WHICHEVER IS HIGHEST, UNLESS OTHERWISE SHOW IN PLANS.
 - BACKFILL ANY VOIDS BEYOND THE LIMITS OF THE CONCRETE INTERCEPTOR PAD WITH CEMENT STABILIZED BACKFILL PER ITEM 400.
 - INTERCEPTOR STRUCTURES SHOWN ARE FOR SIZES 42 INCH DIAMETER AND SMALLER. LARGER DIAMETER PIPE ARE DETAILED ELSEWHERE IN THE PLANS.
 - SEE CONCRETE CHANNEL LINING DETAIL SHEET FOR CMP OUTFALL DETAILS THROUGH CONCRETE CHANNEL RIPRAP.
 - OUTFALL DETAILS SHOWN ARE SUITABLE ON SLOPES UP TO AND INCLUDING 4:1. FLATTER SLOPES WILL REQUIRE AN INDIVIDUALLY DESIGNED STRUCTURE.
 - FOR URBAN INTERCEPTOR STRUCTURES, IF APPLICABLE, SEE TxDOT STANDARDS FOR INLETS TYPES A, AD, AND AAD, AND RIPRAP DETAILS AROUND.

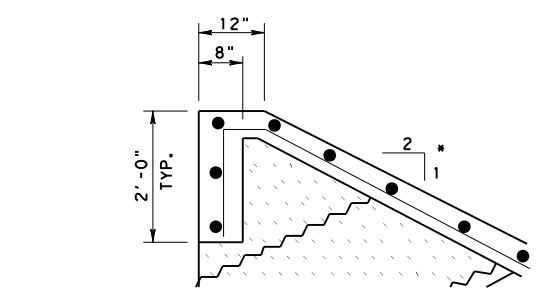


E SECTION



F SECTION

BEDDING CMP DETAIL

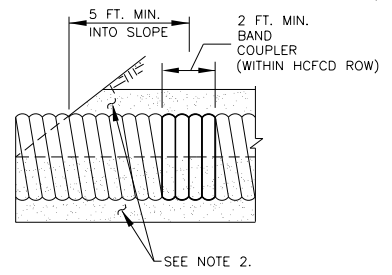


DETAIL "A" TYPICAL TOEWALL CONSTRUCTION

A THESE ARE GENERAL DETAILS AND NOTES. IF THERE ARE ANY DISCREPANCIES BETWEEN THIS STANDARD AND THE DETAILED SEALED DRAINAGE PLANS, THE SEALED PLANS WILL OVERRIDE. THE ONLY EXCEPTION IS NOTE AA ON THIS SHEET.

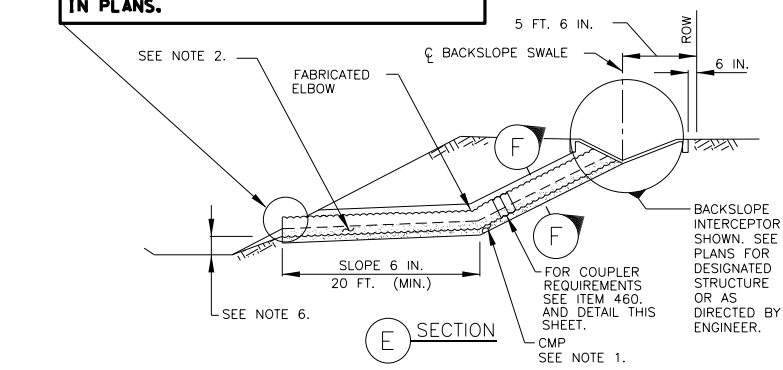
B DESIGNER TO CONSULT WITH DISTRICT ENVIRONMENTAL SECTION TO DETERMINE IF OUTFALL IS OR IS NOT JURISDICTIONAL. IF JURISDICTIONAL, REQUEST ORDINARY HIGH WATER ELEVATION AND CORP OF ENGINEER'S PERMIT FROM ENVIRONMENTAL SECTION FOR ANY WORK BELOW ORDINARY HIGH WATER ELEVATION.

- ADDITIONAL NOTES FOR WORK IN HARRIS COUNTY FLOOD CONTROL DISTRICT (HCFCD) ROW:
- FOR STORM SEWER AND INTERCEPTOR OUTFALL PIPES WITHIN HCFCD ROW, USE CMP.
 - INSTALL EPOXY "CLEAN WATER CLEAR CHOICE" LOGO BUTTON ON INTERCEPTORS. LOCATION TO BE DETERMINED BY THE ENGINEER. THESE BUTTONS ARE TO BE PROVIDED TO CONTRACTOR BY HCFCD FREE OF CHARGE.



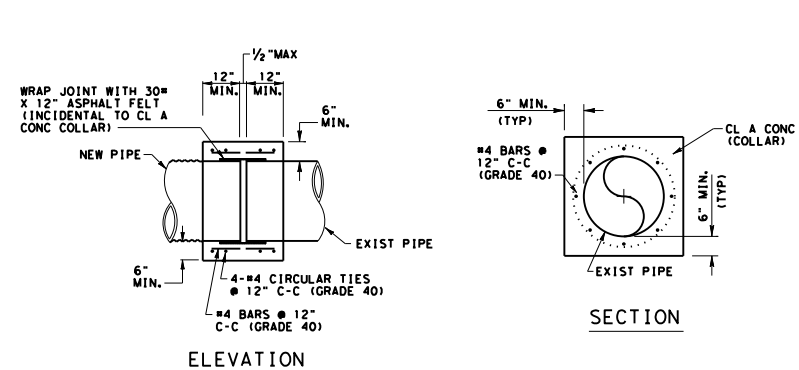
CMP BAND COUPLER DETAIL

NOTE AA
THIS DETAIL OF CENTERLINE OF ANY PIPE END ALIGNING WITH CHANNEL SIDE SLOPE IS OF UTMOST IMPORTANCE. THIS DETAIL SHALL SUPERSEDE ANY OTHER DETAILS/PIPE LENGTHS SHOWN ELSEWHERE IN PLANS.



E SECTION

TYPICAL INTERCEPTOR OUTFALL STRUCTURE LAYOUT



ELEVATION

CONCRETE COLLAR DETAIL

BOTTOM WIDTH	PIPE OUTLET INVERT (FLOW LINE)
6 FEET ≤ BW ≤ 20 FT	1 FOOT ABOVE CHANNEL FLOWLINE
20 FEET ≤ BW ≤ 60 FT	AT TOE OF SLOPE
BW > 60 FT	AT TOE OF SLOPE

TABLE 1

Texas Department of Transportation
Houston District

HCFCD
INTERCEPTOR
STRUCTURE DETAILS
HCFCD-ISD (1)

FILE: STD65.dgn	DN: TxDOT	CK: TxDOT	DW: TxDOT	CR: TxDOT
© TxDOT DEC, 2012	DIST	FED REG	PROJECT NO.	SHEET
REVISIONS 11/2013 FIX MISPELLINGS 02/2015 2014 SPECS	HOU	6	COUNTY	CONTROL SECT JOB HIGHWAY