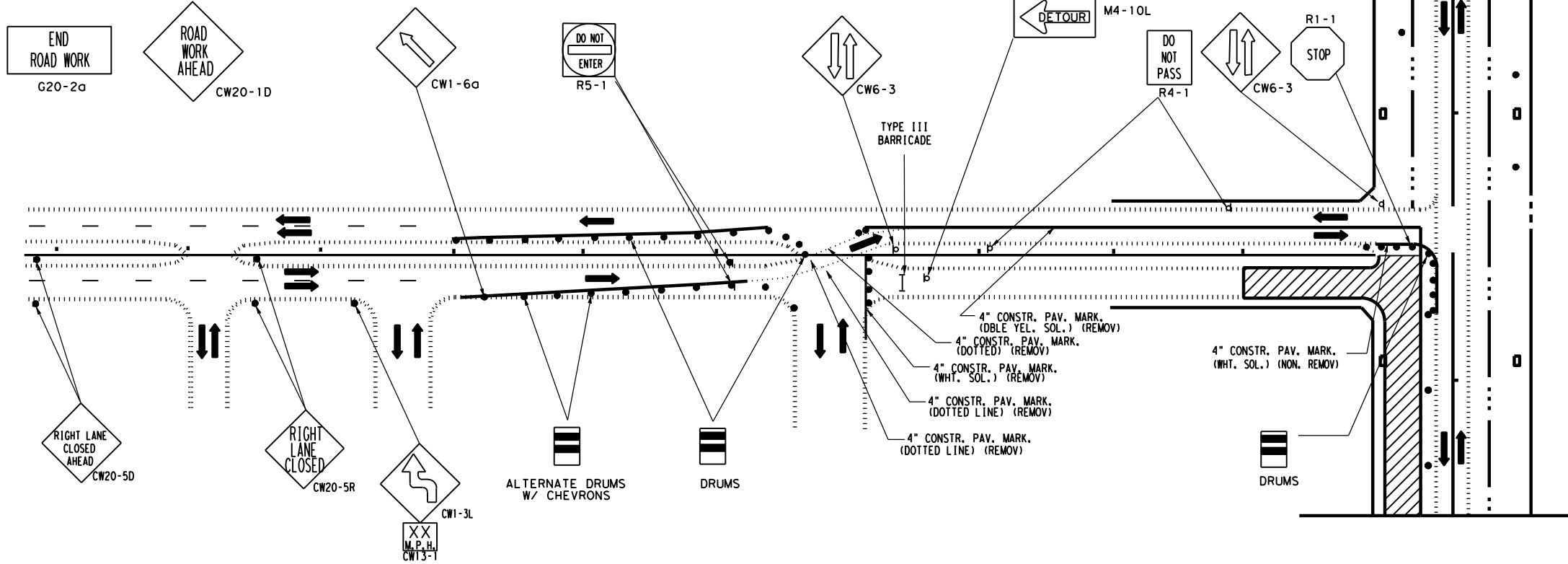


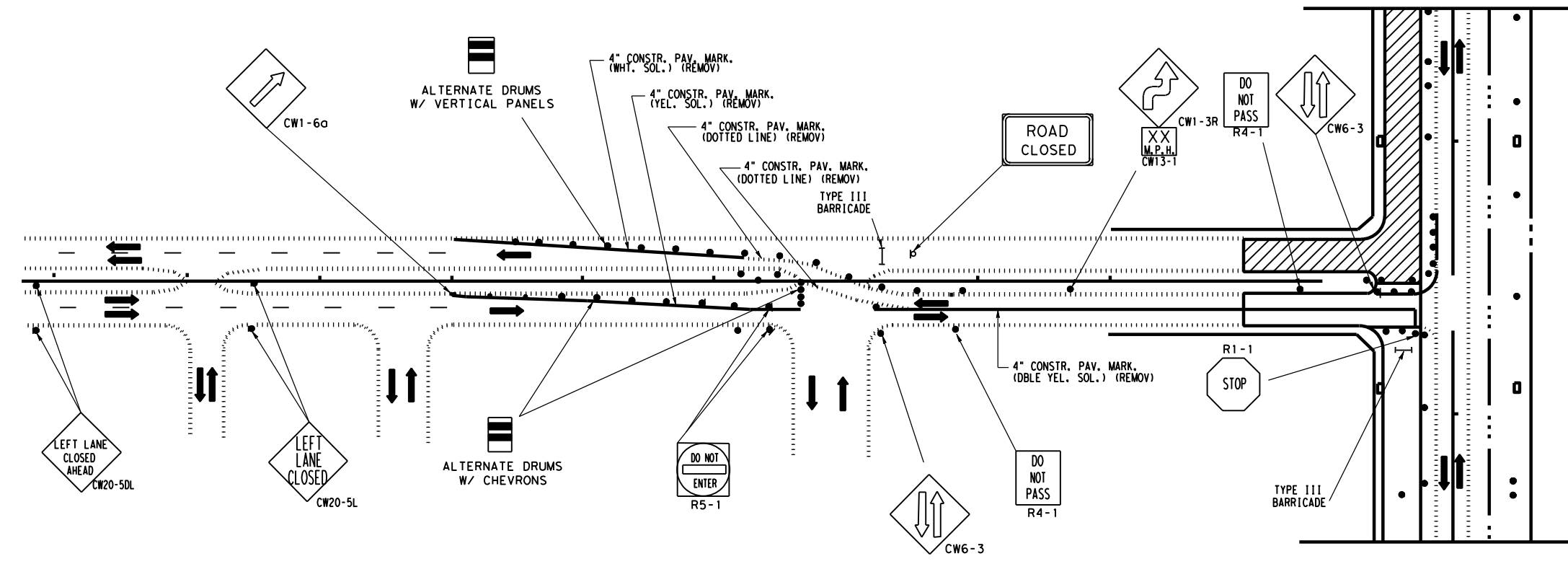
TYPICAL ADVANCE SIGNING
TO REMAIN IN PLACE DURING ALL PHASES
OR AS DIRECTED BY AN ENGINEER



TYPICAL TRANSITION LENGTHS
AND
SUGGESTED MAXIMUM SPACING OF DEVICES

POSTED SPEED	FORMULA	MINIMUM DESIRABLE TAPER LENGTHS (ft)			SUGGESTED MAX. SPAC. OF DEVICE		MINIMUM SIGN SPACING x DISTANCE
		10' OFFSET	11' OFFSET	12' OFFSET	ON A TAPER	ON A TANGENT	
30	$L = \frac{WS^2}{60}$	150'	165'	180'	30'	60' - 75'	120'
35		205'	225'	245'	35'	70' - 90'	160'
40		265'	295'	320'	40'	80' - 100'	240'
45	L=WS	450'	495'	540'	45'	90' - 110'	320'
50		500'	550'	600'	50'	100' - 125'	400'
55		550'	605'	660'	55'	110' - 140'	500'
60		600'	660'	720'	60'	120' - 150'	600'
65		650'	715'	780'	65'	130' - 165'	700'
70	700'	770'	840'	70'	140' - 175'	800'	

Ⓢ CONVENTIONAL ROADS ONLY
Ⓣ TAPER LENGTHS HAVE BEEN ROUNDED OFF.



CONSTRUCTION WARNING
SIGN SPACING

POSTED SPEED (MPH)	"X" SIGN SPACINGS (FEET)
30 OR LESS	120
35	120
40	240
45	320
50	400
55	500
60	600
65	700
70	800

LEGEND

- CONSTRUCTION AREA
- OPEN TO TRAFFIC

Texas Department of Transportation
Houston District

BOULEVARD CLOSURES

TCPTC 3050-96

FILE:	DN:	CK:	DW:	CK:
© TxDOT 2006	DIST	FED REG	PROJECT NO.	
REVISIONS REV. 5/2006	HOU	6	SHEET	
	COUNTY	CONTROL	SECT	JOB
				HIGHWAY