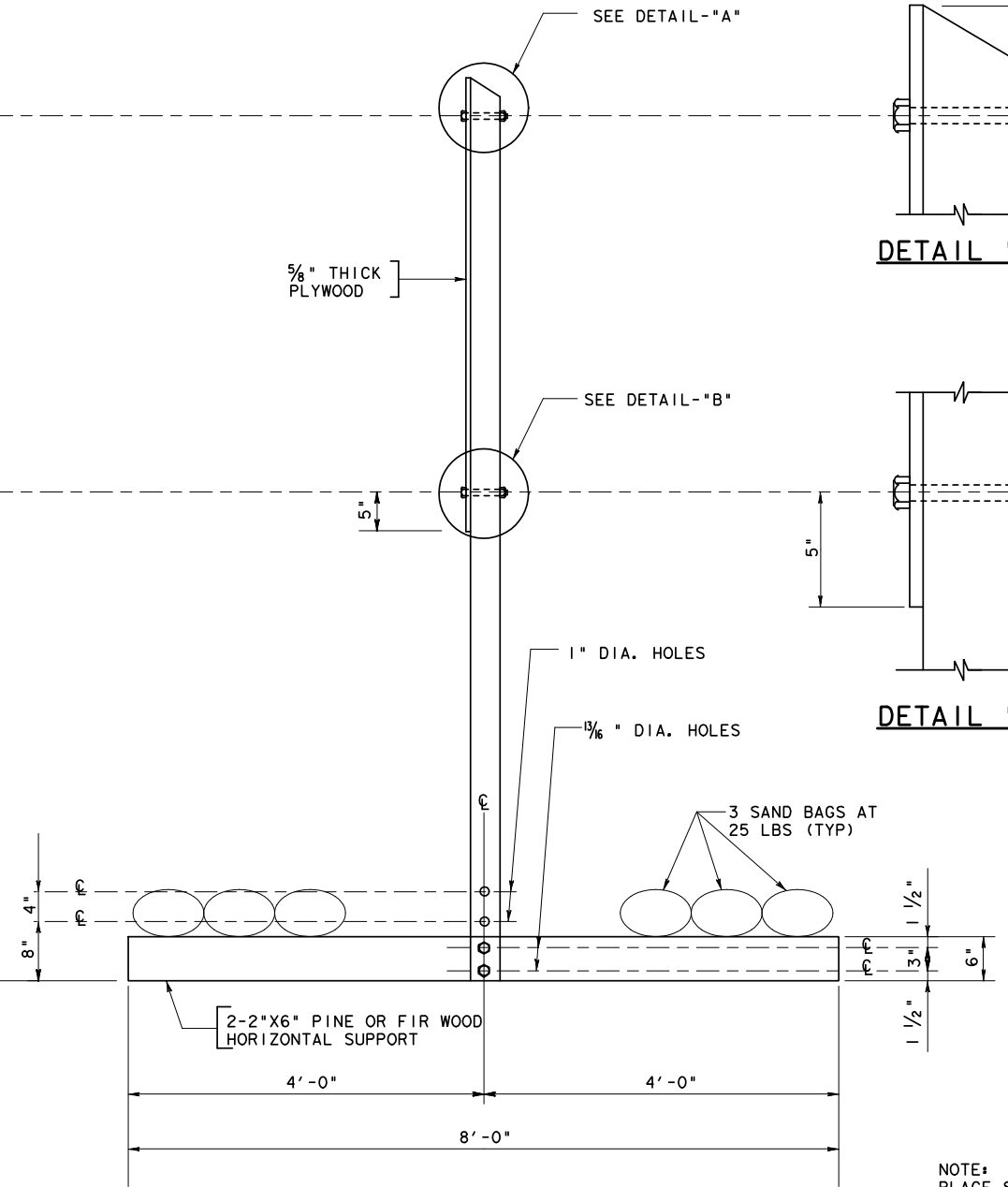
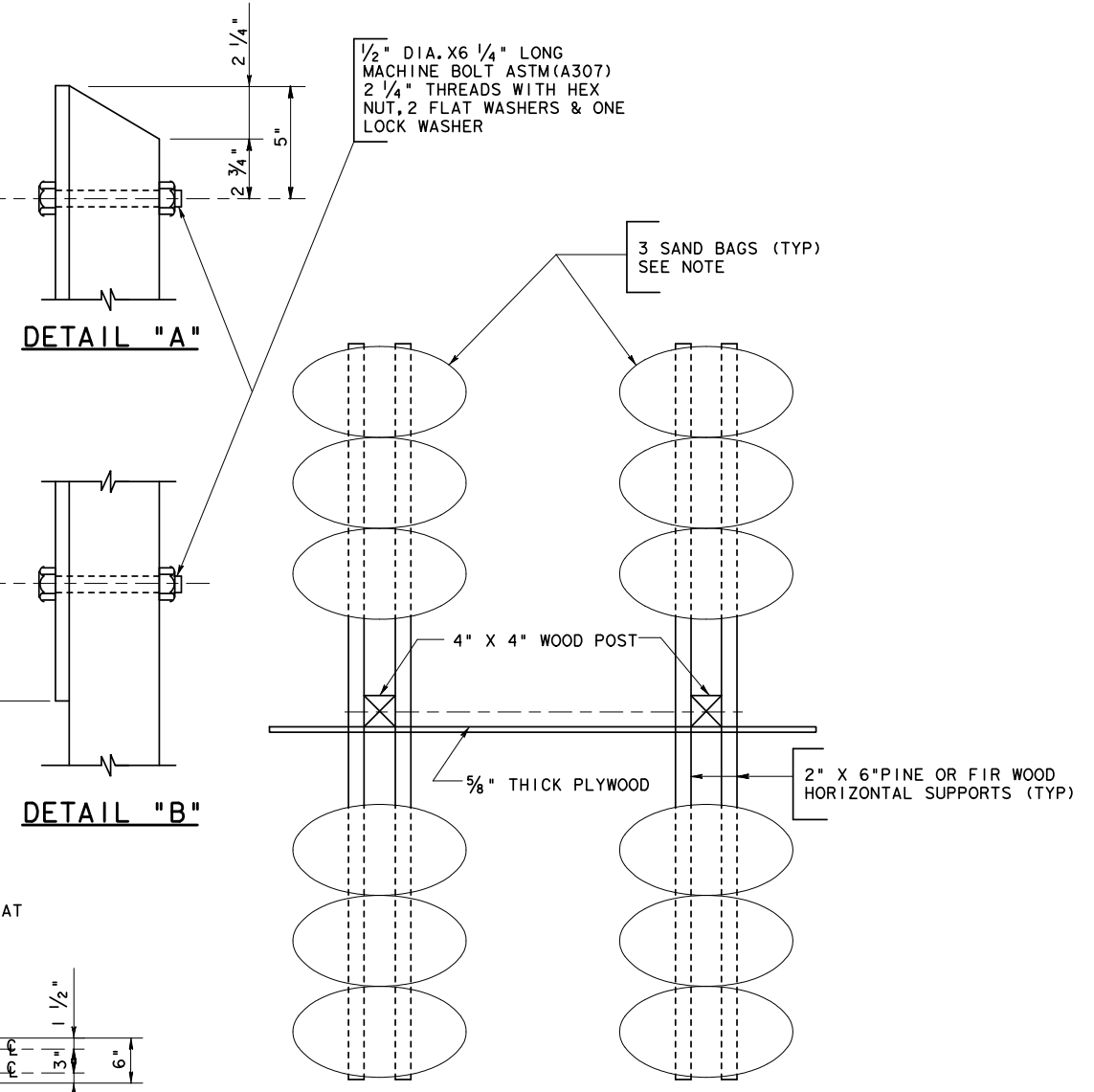


FRONT VIEW



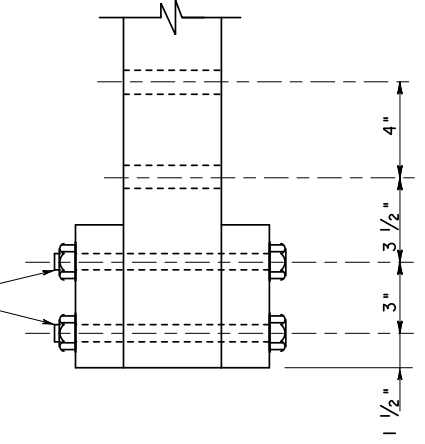
SIDE VIEW



TOP VIEW

NOTE:
 PLACE SAND BAGS EQUALING 75 LBS'
 3 BAGS AT 25 LBS. ON EACH END OF
 WOOD HORIZONTAL SUPPORTS.

3/4" DIA. X 10 1/2" LONG
 MACHINE BOLT ASTM (A307)
 2 1/2" THREADS WITH HEX
 NUT, 2 FLAT WASHERS & ONE
 LOCK WASHER



**DETAIL "C" AS SHOWN
 DETAIL "D" OPP. HAND**

TEMPORARY EXIT GORE SIGN

TEGS TC6000-96

FILE#	DN#	CK#	DW#	CK#
© TxDOT	DIST	FED REG	PROJECT NO.	SHEET
REVISIONS REV. 3/2010 Title	HOU	6		
COUNTY	CONTROL	SECT	JOB	HIGHWAY