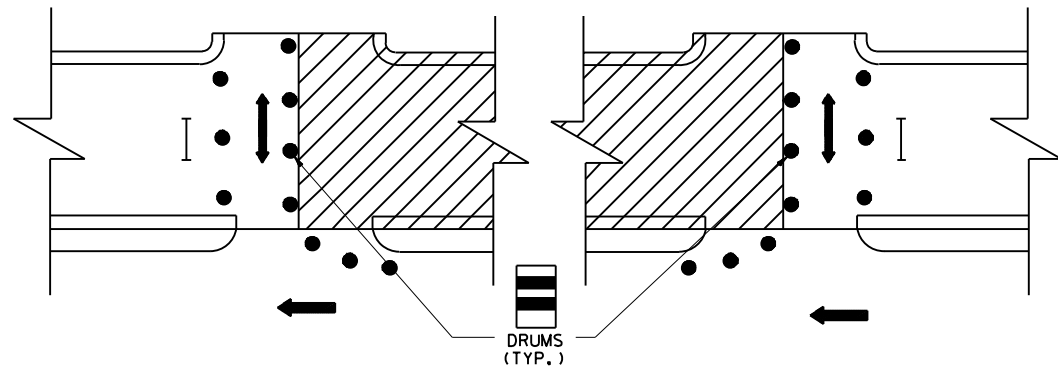
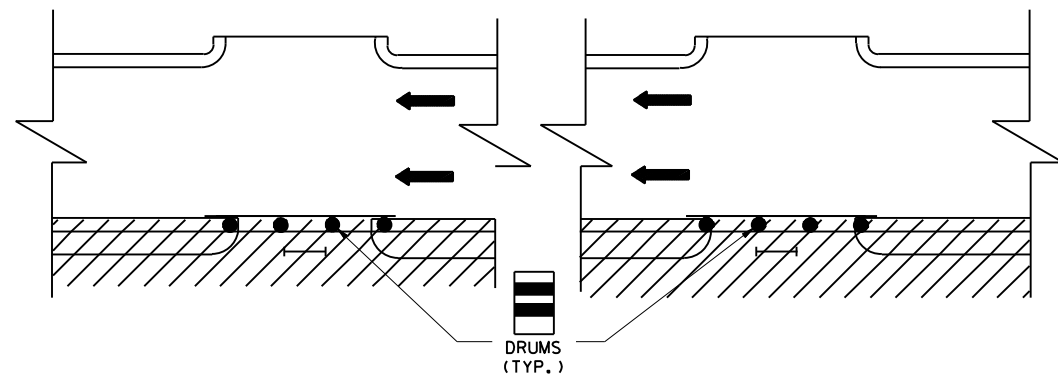


- 1) WITH TRAFFIC ON EXISTING BUILD ONE-HALF OF DRIVE.
- 2) BUILD OTHER HALF OF DRIVE

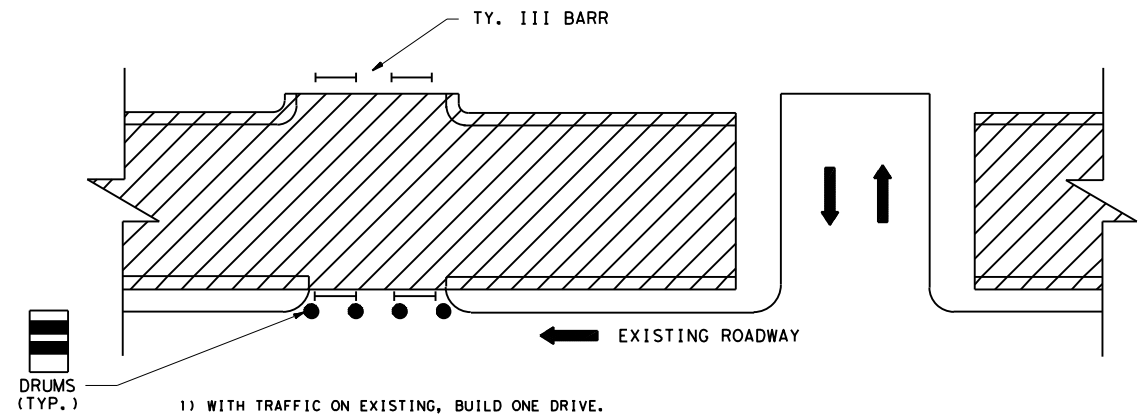


- 2) BUILD OTHER HALF OF DRIVE

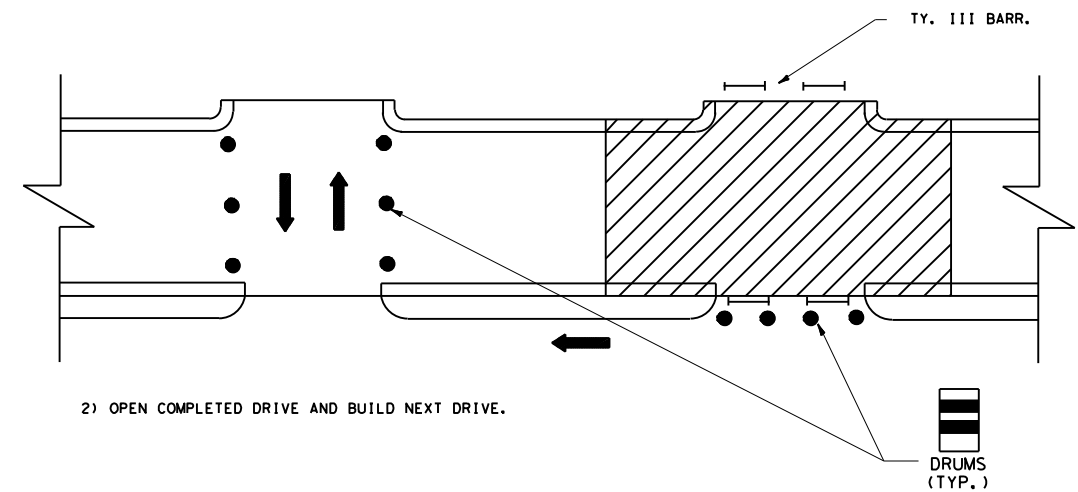


- 3) OPEN DRIVE
- 4) AFTER TRAFFIC MOVES TO NEW ROADWAY, BUILD REMAINING CURB.

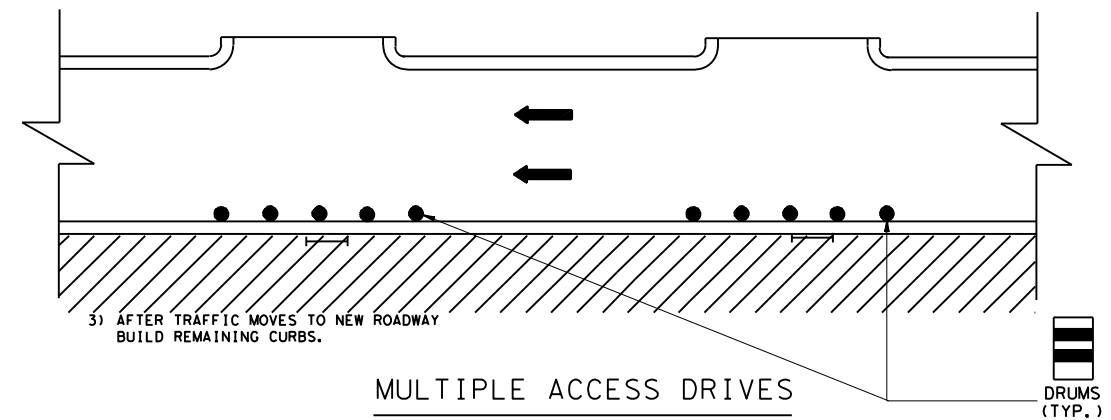
SINGLE ACCESS DRIVES



- 1) WITH TRAFFIC ON EXISTING, BUILD ONE DRIVE.



- 2) OPEN COMPLETED DRIVE AND BUILD NEXT DRIVE.



- 3) AFTER TRAFFIC MOVES TO NEW ROADWAY BUILD REMAINING CURBS.

MULTIPLE ACCESS DRIVES

**CONSTRUCTION SEQUENCE
FOR MISCELLANEOUS DRIVES**

CSMD TC8010-2020

FILE:	DN:	CK:	DW:	CK:
© TxDOT 2020	DIST	FED REG	PROJECT NO.	SHEET
REVISIONS	HOU	6		
	COUNTY	CONTROL	SECT	JOB
				HIGHWAY