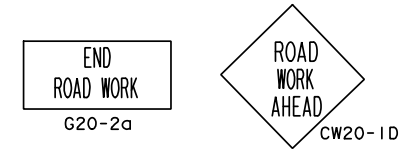


TYPICAL ADVANCE SIGNING
TO REMAIN PLACE DURING ALL PHASES
OR AS DIRECTED BY ENGINEER



CONSTRUCTION WARNING
SIGN SPACING

POSTED SPEED (MPH)	*X* SIGN SPACINGS (FEET)
30 OR LESS	120
35	160
40	240
45	320
50	400
55	500
60	600
65	700
70	800

TYPICAL TRANSITION LENGTHS
AND
SUGGESTED MAXIMUM SPACING OF DEVICES

POSTED SPEED	FORMULA	MINIMUM DESIRABLE TAPER LENGTHS (⊙)			SUGGESTED MAX. SPAC. OF DEVICE		MINIMUM SIGN SPACING X DISTANCE
		10' OFFSET	11' OFFSET	12' OFFSET	ON A TAPER	ON A TANGENT	
30	$L = \frac{WS^2}{60}$	150'	165'	180'	30'	60'-75'	120'
35		205'	225'	245'	35'	70'-90'	160'
40		265'	295'	320'	40'	80'-100'	240'
45	L=WS	450'	495'	540'	45'	90'-110'	320'
50		500'	550'	600'	50'	100'-125'	400'
55		550'	605'	660'	55'	110'-140'	500'
60		600'	660'	720'	60'	120'-150'	⊙ 600'
65		650'	715'	780'	65'	130'-165'	⊙ 700'
70	700'	770'	840'	70'	140'-175'	⊙ 800'	

⊙ CONVENTIONAL ROADS ONLY
⊙⊙ TAPER LENGTHS HAVE BEEN ROUNDED OFF.

LEGEND

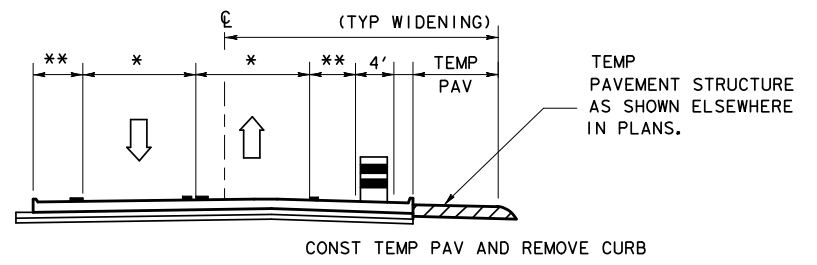
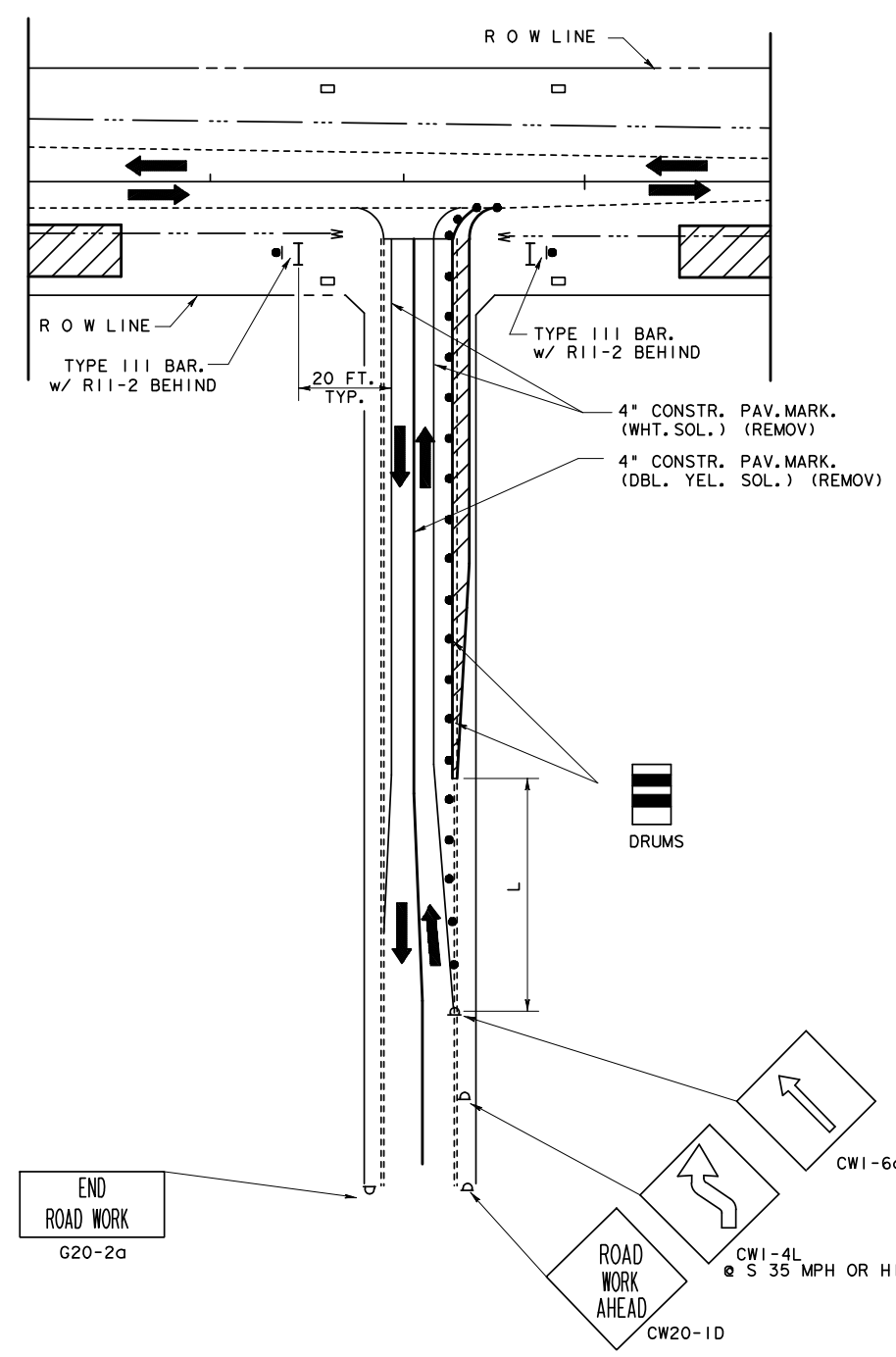
- CONSTRUCTION AREA
- TEMPORARY PAVEMENT
- OPEN TO TRAFFIC



TWO WAY ROADWAY INTERSECTION PHASING

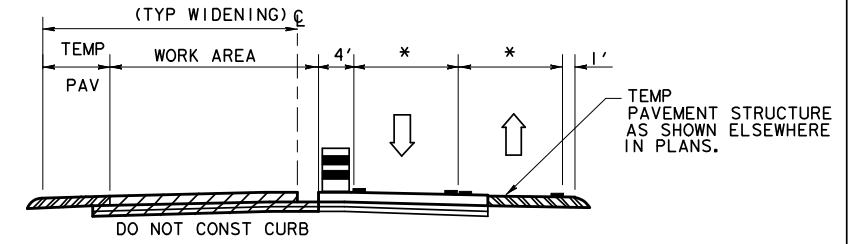
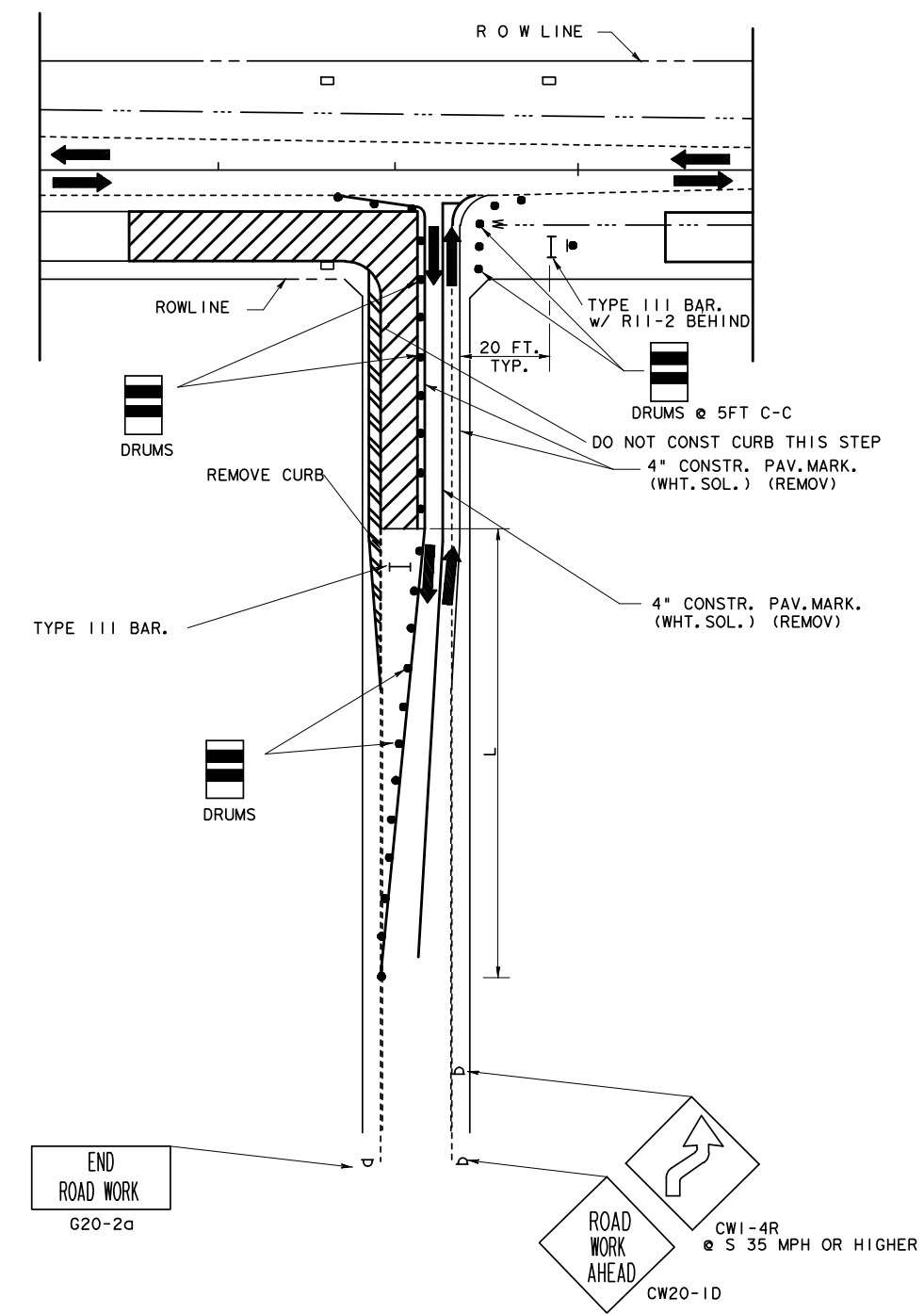
TWRIP(1) TC2010-09

FILE#	DN#	CK#	DW#	CK#
© TxDOT OCT 2009	DIST	FED REG	PROJECT NO.	SHEET
REVISIONS	HOU	6		
	COUNTY	CONTROL	SECT	JOB
				HIGHWAY



STEP 1

- CONST TEMP PAV AND REMOVE CURB
- * 10 FT. MIN. 12 FT. DESIRABLE IF SPACE AVAILABLE.
- * IN CASES WHERE EXISTING SIDE STREETS HAVE LESS THAN 10 FT. LANE WIDTHS, PROVIDE LANE WIDTHS EQUAL OR GREATER THAN EXISTING.



STEP 2

** MIN. 0 FT. MAX. 10 FT.