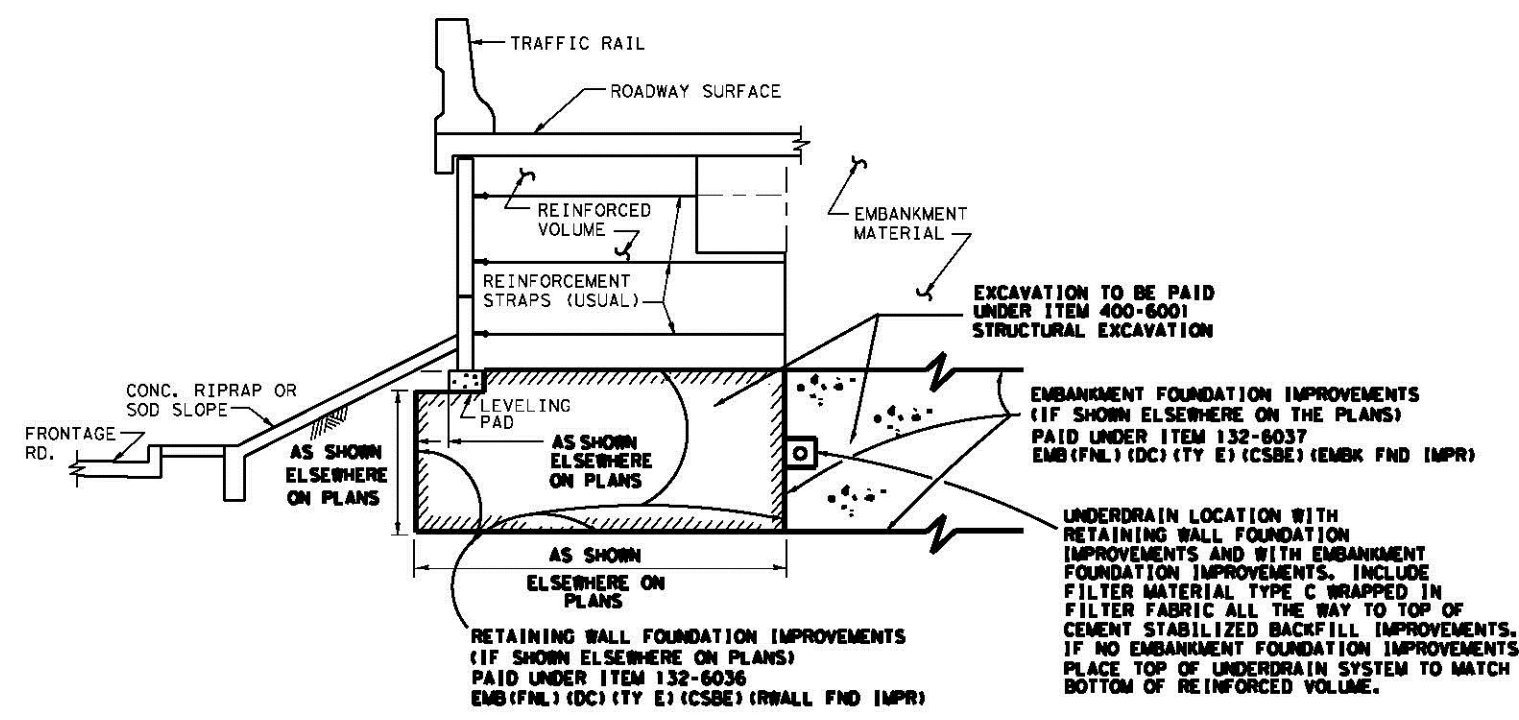
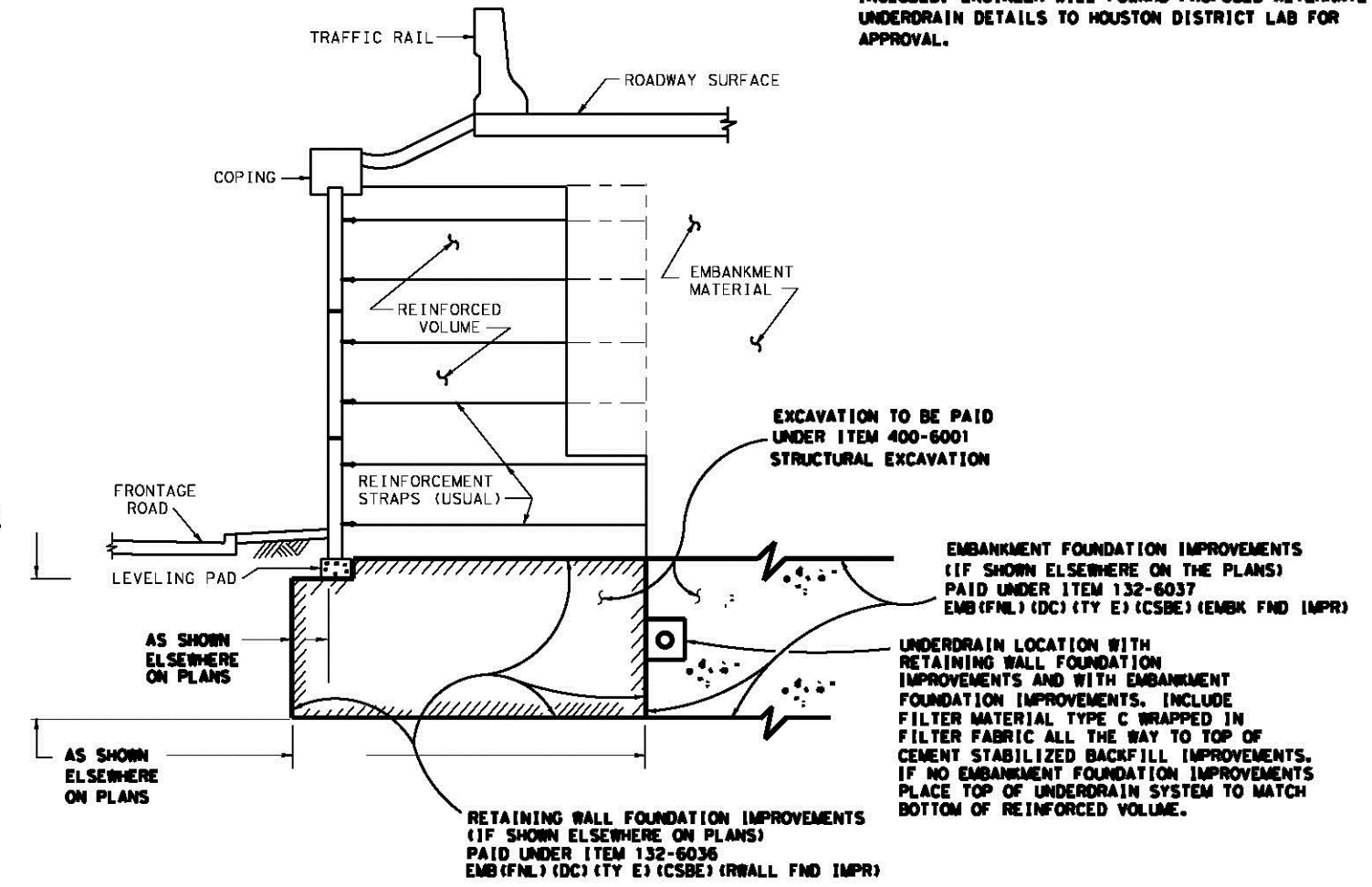


NOTE:
 CONTRACTOR MAY SUBMIT FOR APPROVAL AN ALTERNATE UNDERDRAIN LOCATION. UNDERDRAIN SLOPE SHOULD BE INCLUDED. ENGINEER WILL FORWARD PROPOSED ALTERNATE UNDERDRAIN DETAILS TO HOUSTON DISTRICT LAB FOR APPROVAL.

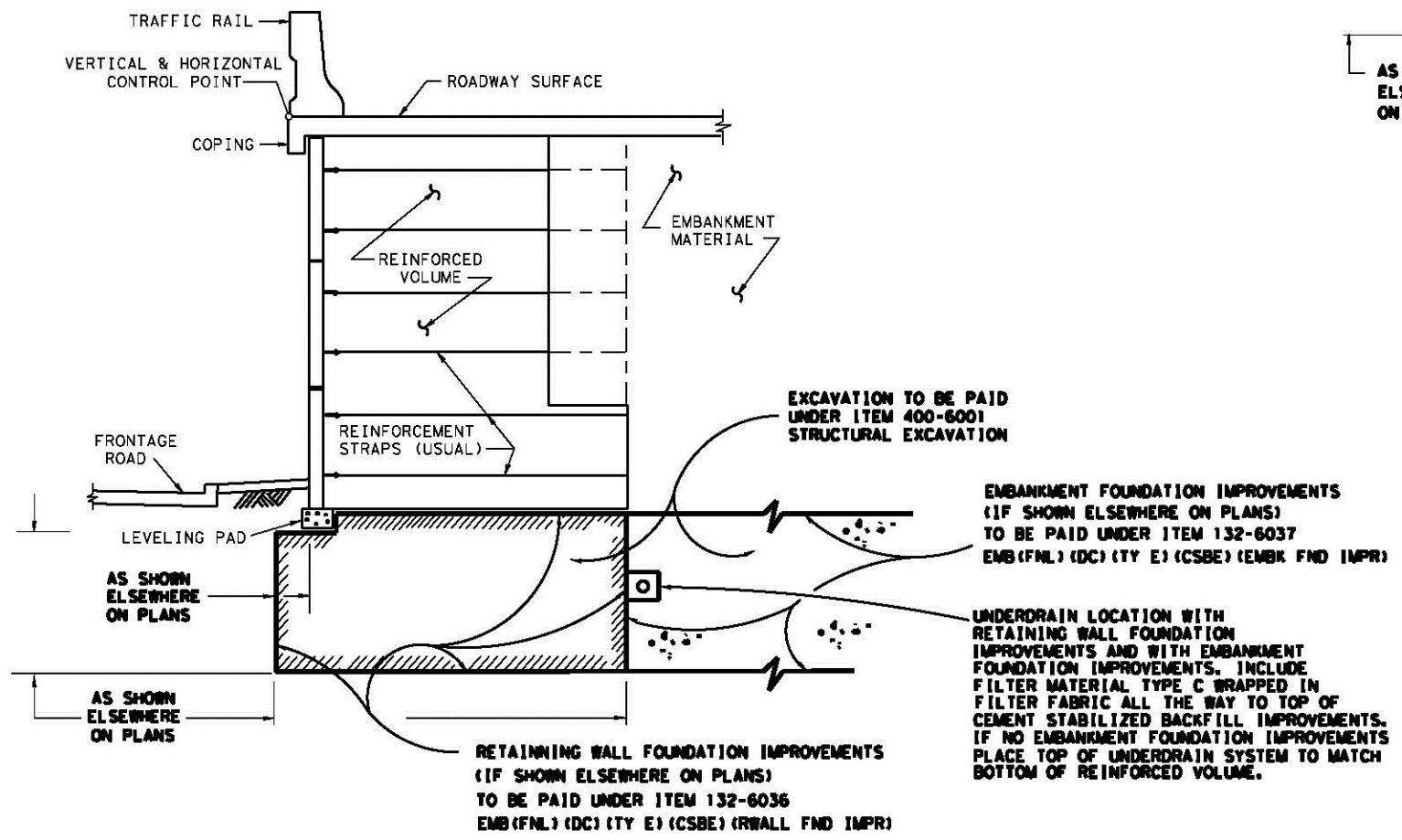


TYPICAL SECTION
 (WALL AT TOP OF SLOPE)



TYPICAL SECTION
 (WALL AT BOTTOM OF SLOPE)

WHEN USING BOTH RETAINING WALL AND EMBANKMENT FOUNDATION IMPROVEMENTS, DESIGNER TO SPECIFY UNDERDRAIN FLOW LINES AS HIGH AS POSSIBLE BUT NOT TO EXTEND TOP OF UNDERDRAIN SYSTEM ABOVE BOTTOM OF REINFORCED VOLUME.



TYPICAL SECTION
 (SHOWING ROADWAY ON WALL)

- NOTES:**
1. PROVIDE CEMENT STABILIZED BACKFILL IN ACCORDANCE WITH ITEM 132 AND HOUSTON DISTRICT SPECIAL PROVISION (132-001).
 2. FOR ADDITIONAL DETAILS ON RETAINING WALLS SEE "MECHANICALLY STABILIZED EARTH RETAINING WALL CEMENT STABILIZED BACKFILL" MSRW-CSB STANDARD SHEET.

Texas Department of Transportation
 Houston District

RETAINING WALL AND EMBANKMENT FOUNDATION IMPROVEMENTS
RW & EFI

FILE: STDJ-12.dgn	DN:	CK:	DW:	CK:
© TxDOT SEPT, 2009	DIST	FED REG	PROJECT NO.	SHEET
REVISIONS	HOU	6		
	COUNTY	CONTROL	SECT	JOB
				HIGHWAY