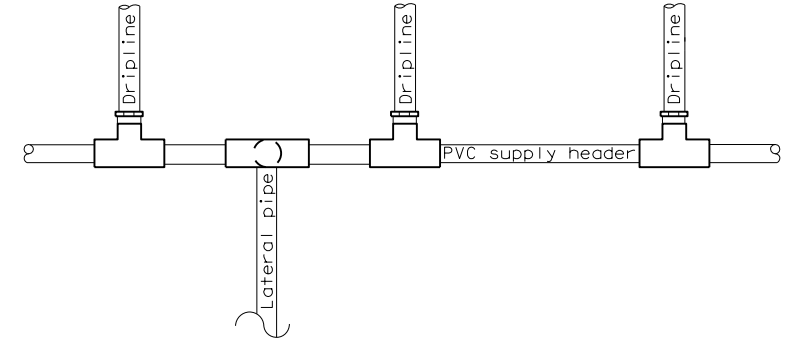
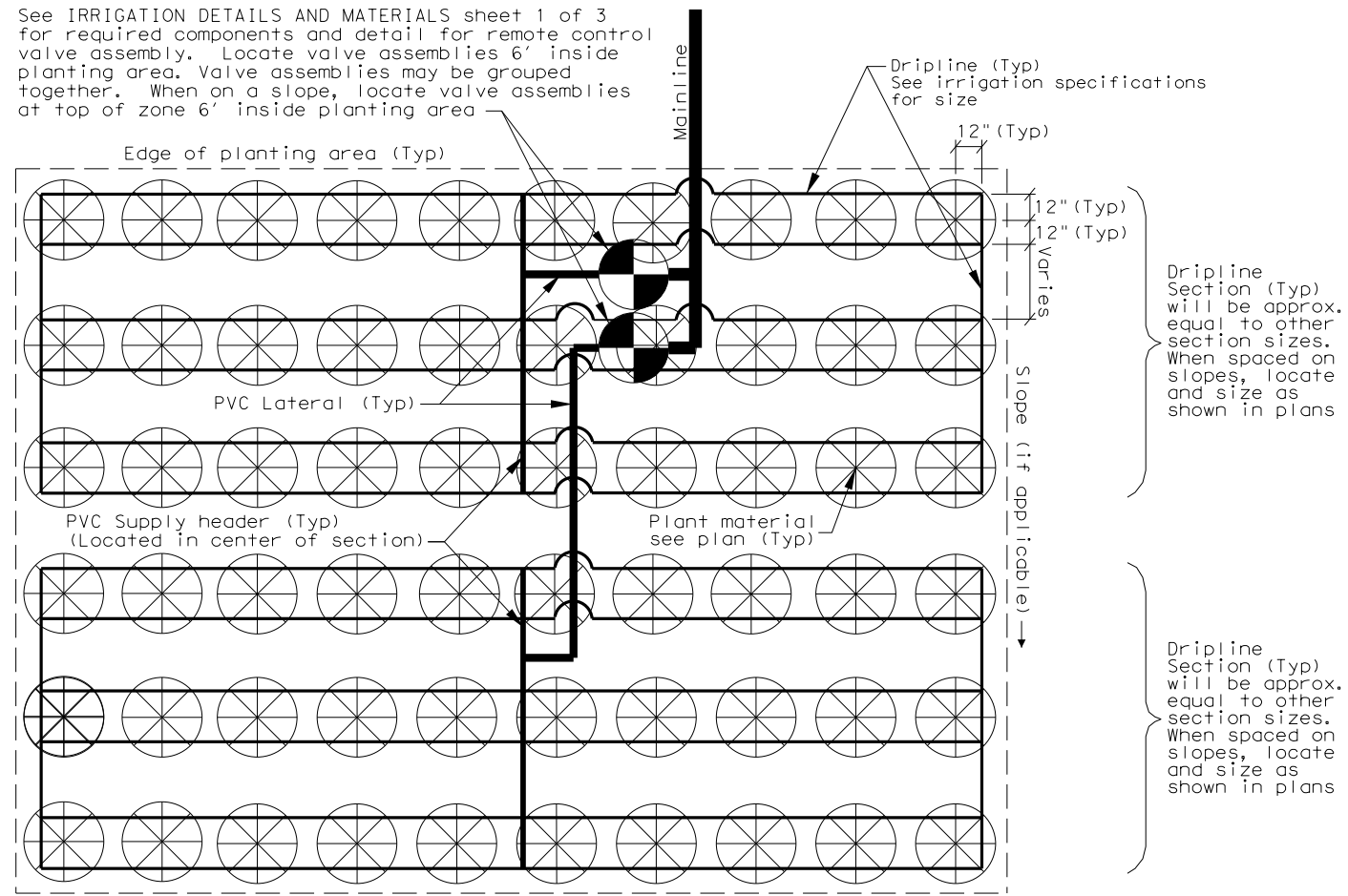
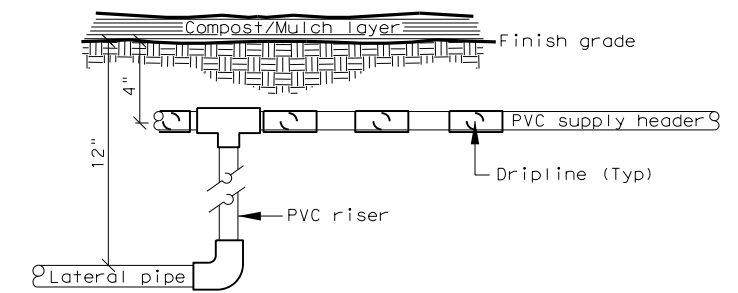


See IRRIGATION DETAILS AND MATERIALS sheet 1 of 3 for required components and detail for remote control valve assembly. Locate valve assemblies 6' inside planting area. Valve assemblies may be grouped together. When on a slope, locate valve assemblies at top of zone 6' inside planting area



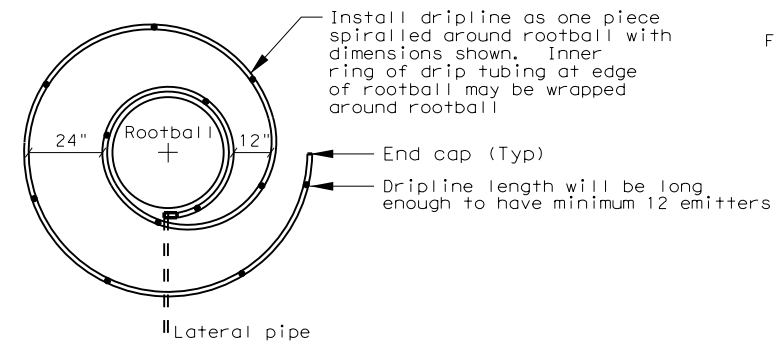
PLAN - RISER/SUPPLY HEADER TO DRIP TUBING



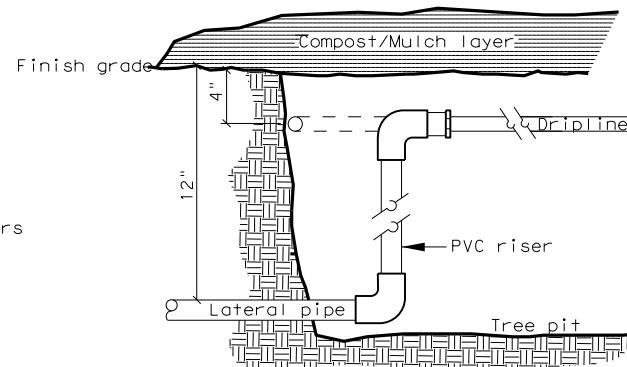
SECTION - RISER/SUPPLY HEADER TO DRIP TUBING

DRIPLINE INSTALLATION - GROUP PLANTING

Note: When dripline sections are installed on slopes, schedule controller such that lower sections on slope are operating for shorter lengths of time. Contact engineer and landscape architect for setting length of timed dripline section operation. Total number of emitters and laterals will not allow for section GPM (gallons per minute) to exceed 20 GPM



PLAN - RISER TO DRIP TUBING IN TREE PIT



SECTION - RISER TO DRIP TUBING IN TREE PIT

DRIPLINE INSTALLATION - INDIVIDUAL PLANTING

Note: Total number of emitters and laterals will not allow for section GPM (gallons per minute) to exceed 20 GPM

Details not to scale

FILE:	FED 6	STATE TEXAS	PROJECT NUMBER		SHEET	
REVISED: FEB 2015 for 2014 specs.	DIST 12	COUNTY	CONTROL	SECT	JOB	HIGHWAY