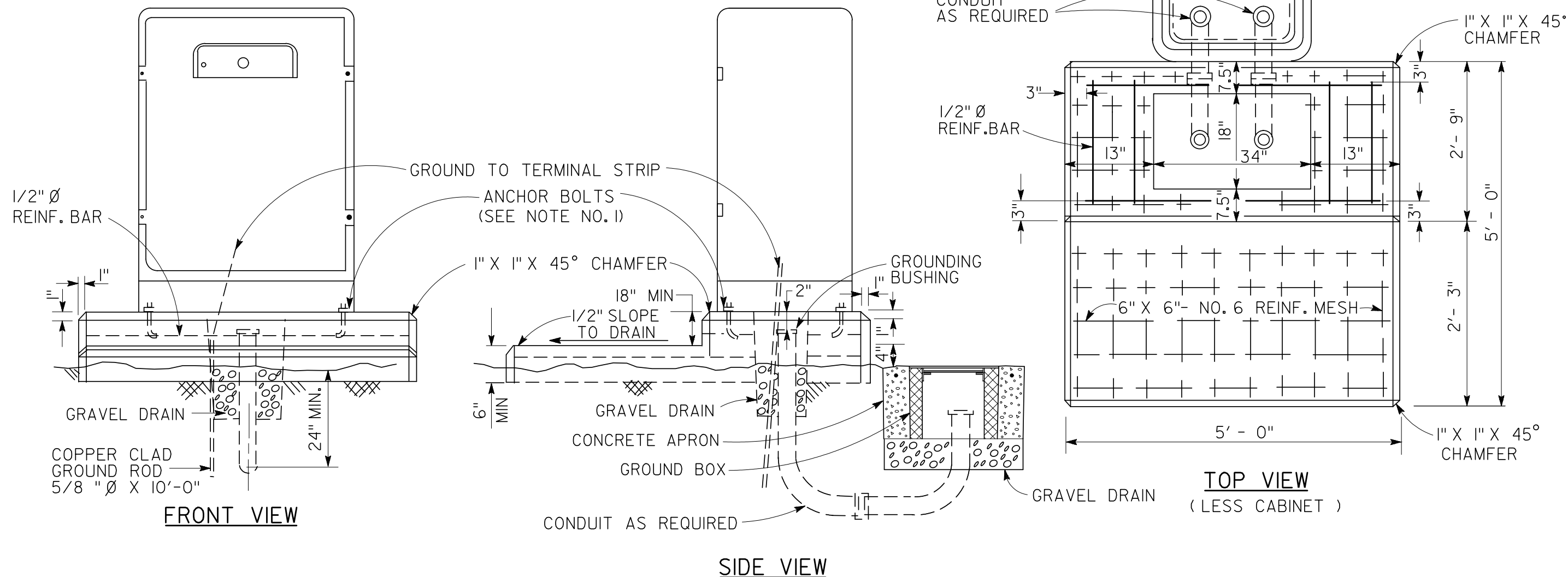


CABINET AS PER CONTROLLER MANUFACTURER

NOTE: SEE PLAN LAYOUT FOR CONDUIT ENTRANCES AND SIZES



NOTES:

1. CABINET MANUFACTURER TO PROVIDE DETAILS OF ANCHOR BOLT LOCATION.
2. MODIFY DIMENSIONS FOR CONCRETE BASE TO FIT EQUIPMENT FURNISHED, IF NECESSARY.
3. PROVIDE GRAVEL DRAIN FOR CONTROLLER AND ALL GROUND BOXES.
4. FURNISH CLASS "B" OR CLASS "C" CONCRETE.
5. SET CONTROLLER FOUNDATION LEVEL WITH THE PAVEMENT SURFACE OR AS APPROVED BY THE ENGINEER.
6. FURNISH AT NO COST TO THE DEPARTMENT ANY ADDITIONAL CONCRETE WHICH MAY BE NECESSARY TO STABILIZE THE FOUNDATION AT UNUSUAL LOCATIONS.
7. PLACE REINFORCING BARS AS DIRECTED.
8. UPON INSTALLING THE CONTROLLER CABINET, APPLY A SILICON-BASED CAULKING COMPOUND AROUND THE BASE OF THE CONTROLLER CABINET.

Texas Department of Transportation
Houston District

SIGNAL DETAILS/STANDARDS
CONTROLLER FOUNDATION
DETAIL
SD/SCFD

FILE#	DN#	CK#	DW#	CK#
© TxDOT 2007	DIST	FED REG	PROJECT NO.	SHEET
REVISIONS	HOU	6		
08-04	COUNTY	CONTROL	SECT	JOB
03-07				HIGHWAY