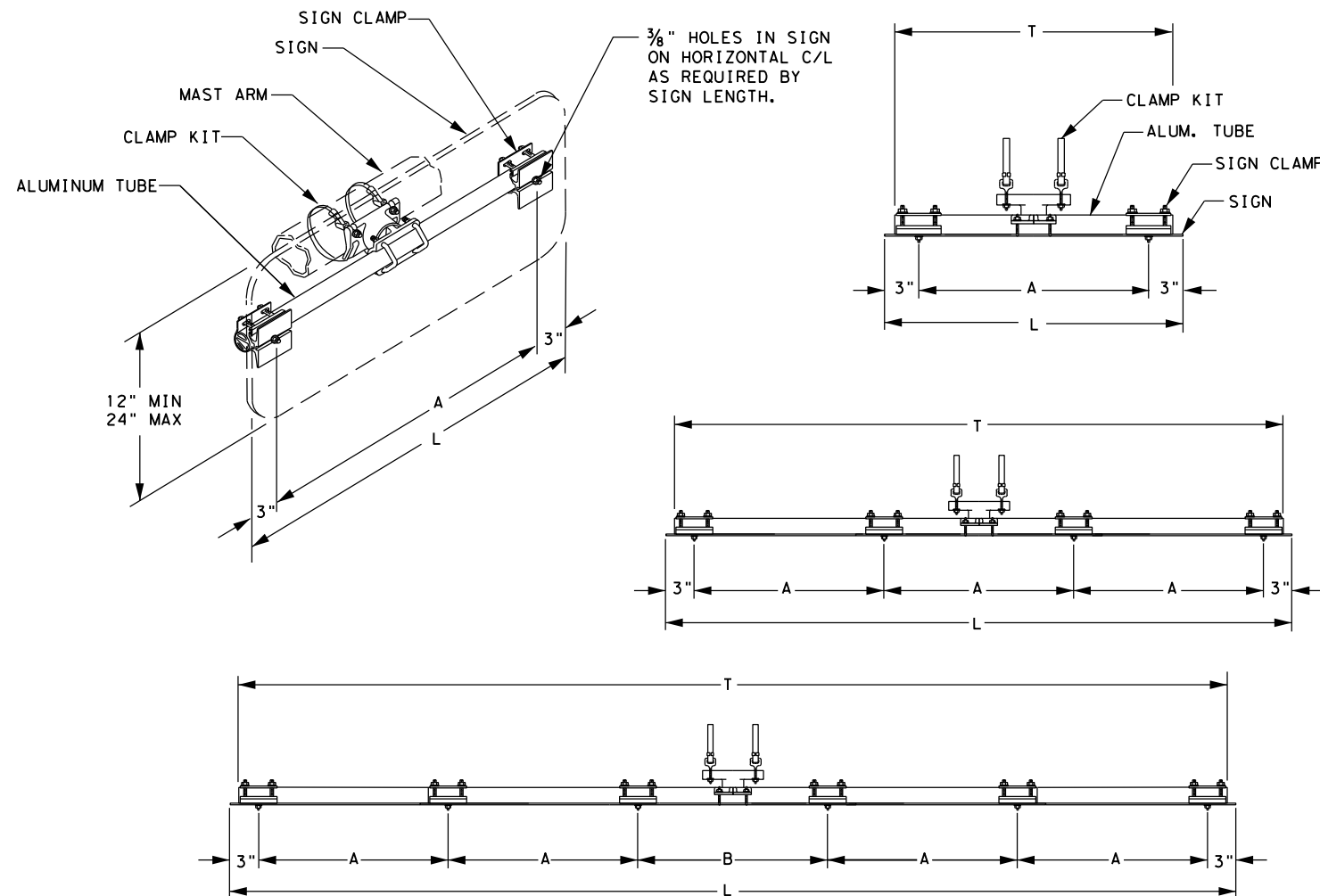


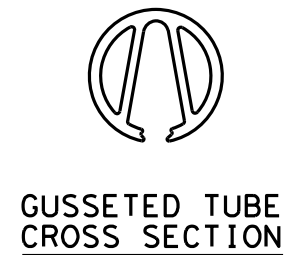
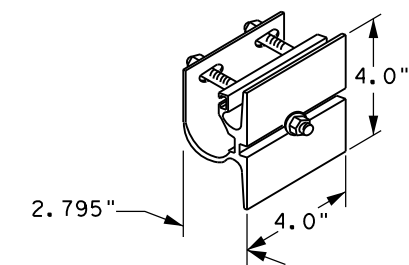
1. USE PELCO PARTS OR APPROVED EQUAL.
2. FURNISH HARDWARE FOR A COMPLETE INSTALLATION.
3. ATTACH THE 90 LB SPAN WIRE CLAMPS (SADDLES) TO TETHERS (SWAY CABLES).
4. FURNISH 1 ADJUSTABLE FREE SWINGING SIGN HANGER PER STREET NAME SIGN SMALLER THAN 3 FT. - 0 IN. SIGNS 3 FT - 0 IN. TO 6 FT.- 0 IN. REQUIRE 2 HANGERS. SIGNS LARGER THAN 6 FT. - 0 IN. REQUIRE 3 HANGERS.

TYPICAL SPAN WIRE SIGN HANGER DETAILS



SIGNS (1'-6" to 3'-0" Long)

SIGN LENGTH (L)	TUBE LENGTH (T)	A
1'-6"	16"	12"
2'-0"	22"	18"
2'-6"	28"	24"
3'-0"	34"	30"



GUSSETED TUBE CROSS SECTION

SIGN CLAMP DETAIL

SIGNS (3'-6" to 8'-0" Long)

SIGN LENGTH (L)	TUBE LENGTH (T)	A
3'-6"	40"	12"
4'-0"	46"	14"
4'-6"	52"	16"
5'-0"	58"	18"
5'-6"	64"	20"
6'-0"	70"	22"
6'-6"	76"	24"
7'-0"	82"	26"
7'-6"	88"	28"
8'-0"	94"	30"

SIGNS (8'-6" to 10'-0" Long)

SIGN LENGTH (L)	TUBE LENGTH (T)	A	B
8'-6"	100"	19"	20"
9'-0"	106"	20"	22"
9'-6"	112"	21"	24"
10'-0"	118"	22"	26"

TYPICAL MAST ARM SIGN MOUNT DETAILS

FILE: Overhead-Sign-mount-det-sp04.dgn

Texas Department of Transportation
 Houston District

SIGNAL DETAILS/STANDARDS
OVERHEAD STREET NAME SIGN
MOUNTING DETAILS
OSNS/MD

DN:	CK:	DW:	CK:	
© TxDOT 2004	DIST	FED REG	PROJECT NO.	SHEET
	HOU	6		
	COUNTY	CONTROL	SECT	JOB
				HIGHWAY