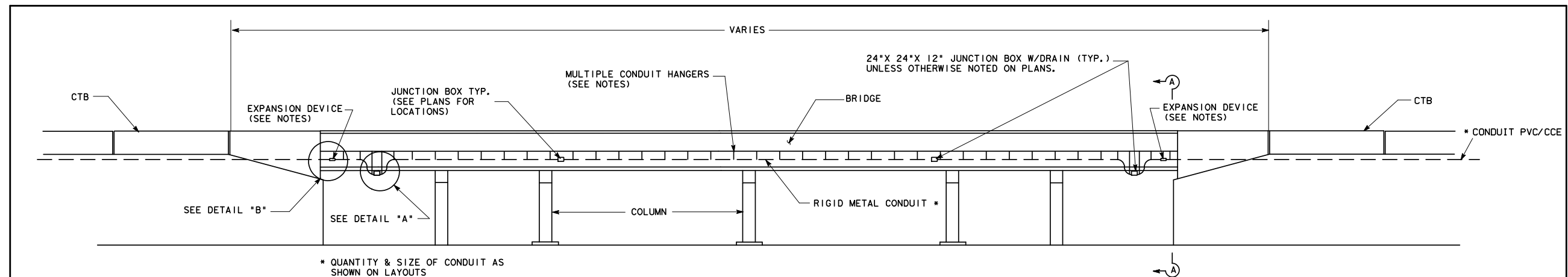


WAS TRAFFIC SIGNALS Bridge1 & bridge2.STD

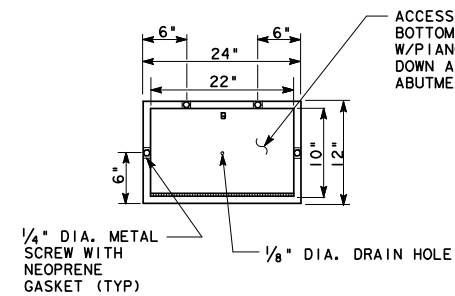


* QUANTITY & SIZE OF CONDUIT AS SHOWN ON LAYOUTS

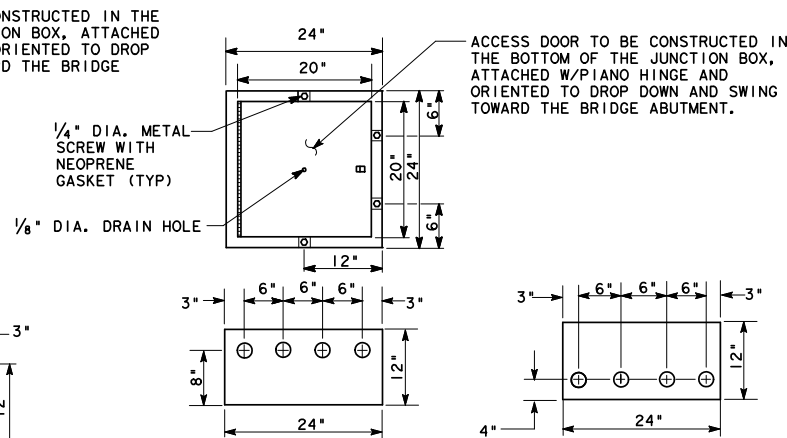
TYPICAL CONDUIT INSTALLATION DETAIL AT INTERSECTION OVERPASS

NOTES:

- JUNCTION BOXES WILL NOT BE PAID FOR DIRECTLY BUT SHALL BE CONSIDERED INCIDENTAL TO THE UNIT PRICE BID FOR THE ITEM, "CONDT (RM) (3 IN).". JUNCTION BOX SHALL BE GALVANIZED NEMA TYPE 4 WITH GASKETED SCREW COVER.
- IN ADDITION TO THE TWO JUNCTION BOXES LOCATED AT THE BRIDGE ENDS, ADDITIONAL JUNCTION BOXES SHALL BE LOCATED AS SHOWN ON THE LAYOUT SHEETS.
- CONDUIT SHALL BE ATTACHED TO BRIDGE SLAB W/MULTIPLE CONDUIT HANGERS. MULTIPLE CONDUIT HANGERS WILL NOT BE PAID FOR DIRECTLY BUT SHALL BE CONSIDERED INCIDENTAL TO THE UNIT PRICE BID FOR THE ITEM, "CONDT (RM) (3)".
- CONTRACTOR SHALL USE ONLY ENGINEER APPROVED MULTIPLE CONDUIT HANGERS SPACED NO MORE THAN 10'-0".
- CONTRACTOR SHALL USE MANUFACTURED INSULATED BUSHINGS AT ALL ENDS OF THE CONDUIT.
- EXPANSION DEVICES WILL NOT BE PAID FOR DIRECTLY BUT SHALL BE CONSIDERED INCIDENTAL TO THE UNIT PRICE BID FOR THE ITEM, "CONDT (RM) (3)". EXPANSION DEVICES SHALL BE PLACED AT ALL BRIDGE EXPANSION JOINTS.
- THE NUMBER AND SIZE OF CONDUIT MAY VARY FROM BRIDGE TO BRIDGE. MULTIPLE CONDUIT HANGERS SHALL BE DESIGNED TO ACCOMMODATE THE GIVEN NUMBER OF CONDUITS.
- CONTRACTOR MAY VARY THE LOCATION AND SPACING OF CONDUIT THROUGH THE ABUTMENT IN ORDER TO SECURE BETTER PLACEMENT OF CONDUIT UNDER BRIDGE WITH APPROVAL OF THE ENGINEER.
- CONTRACTOR SHALL COORDINATE PLACEMENT OF CONCRETE ENCASED CONDUIT THROUGH REINFORCED VOLUME OR REINFORCED EARTH RETAINING WALL SECTION TO INSURE THAT CONCRETE ENCASEMENT DOES NOT INTERFERE WITH REINFORCING MESH.

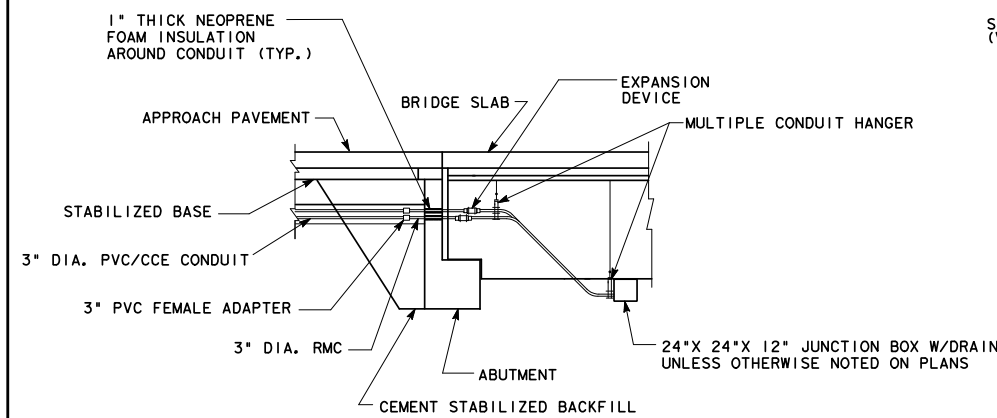


24"x 12"x 12" JUNCTION BOX DETAIL

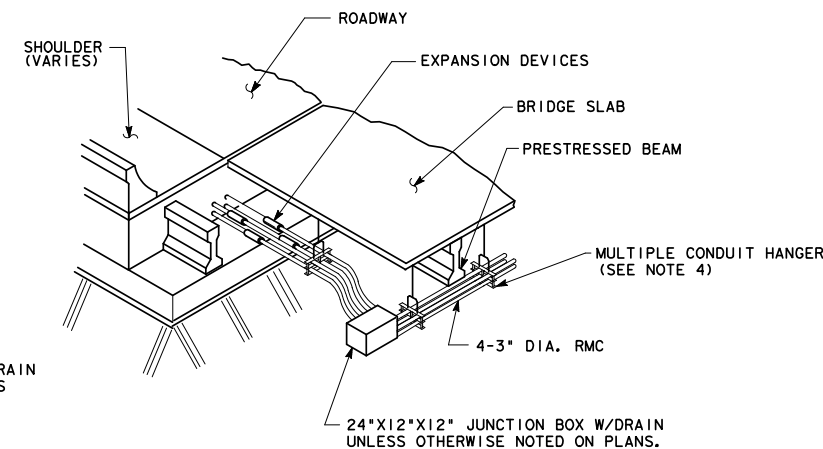


ALL HOLES IN BOTH SIZES OF JUNCTION BOXES ARE FOR 3" DIA. RMC (3.50" O.D.) AND SHALL BE ARRANGED AS SHOWN ON DETAILS.

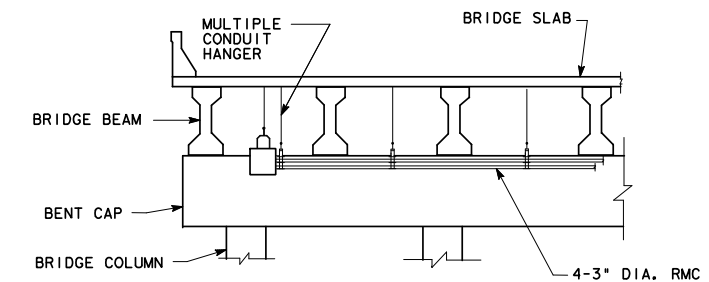
24"x 24"x 12" JUNCTION BOX DETAIL



DETAIL "B"



DETAIL "A"



SECTION A-A

TEXAS DEPARTMENT OF TRANSPORTATION
HOUSTON DISTRICT

© 2008 TXDOT

SIGNAL DETAILS/STANDARDS CONDUIT DETAILS AT BRIDGE INSTALLATION CD/BI

(SHEET 1 OF 2)

SCALE	FED. RD. DIV. NO.	STATE	PROJECT NO.	HIGHWAY
N. T. S.	6	TEXAS		FM 0000
REVISIONS	STATE DISTRICT	COUNTY	CONTROL SECTION	JOB SHEET NO.
6-2008	HOU	HARRIS, ETC.	0912 00	350 00