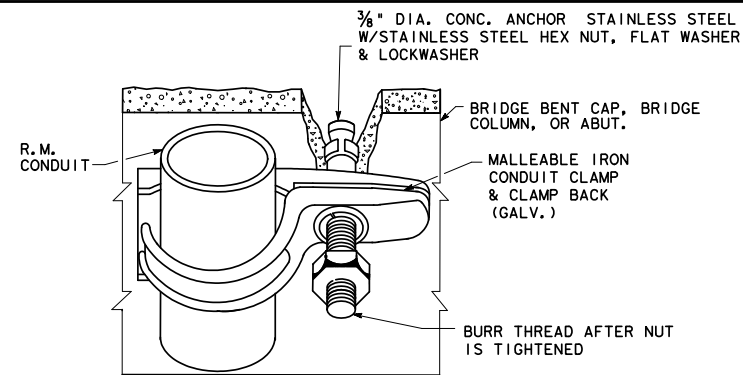


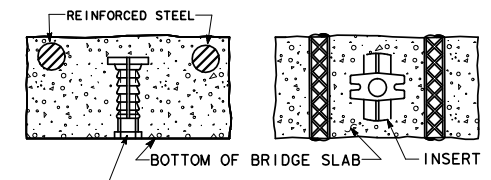
EXPANSION DEVICE DETAIL

INSTALL AT ALL OPEN JOINTS, AT EACH END OF BRIDGE ABUTMENTS & BETWEEN BRIDGE BENTS, ALLOW FOR 8" MOVEMENT



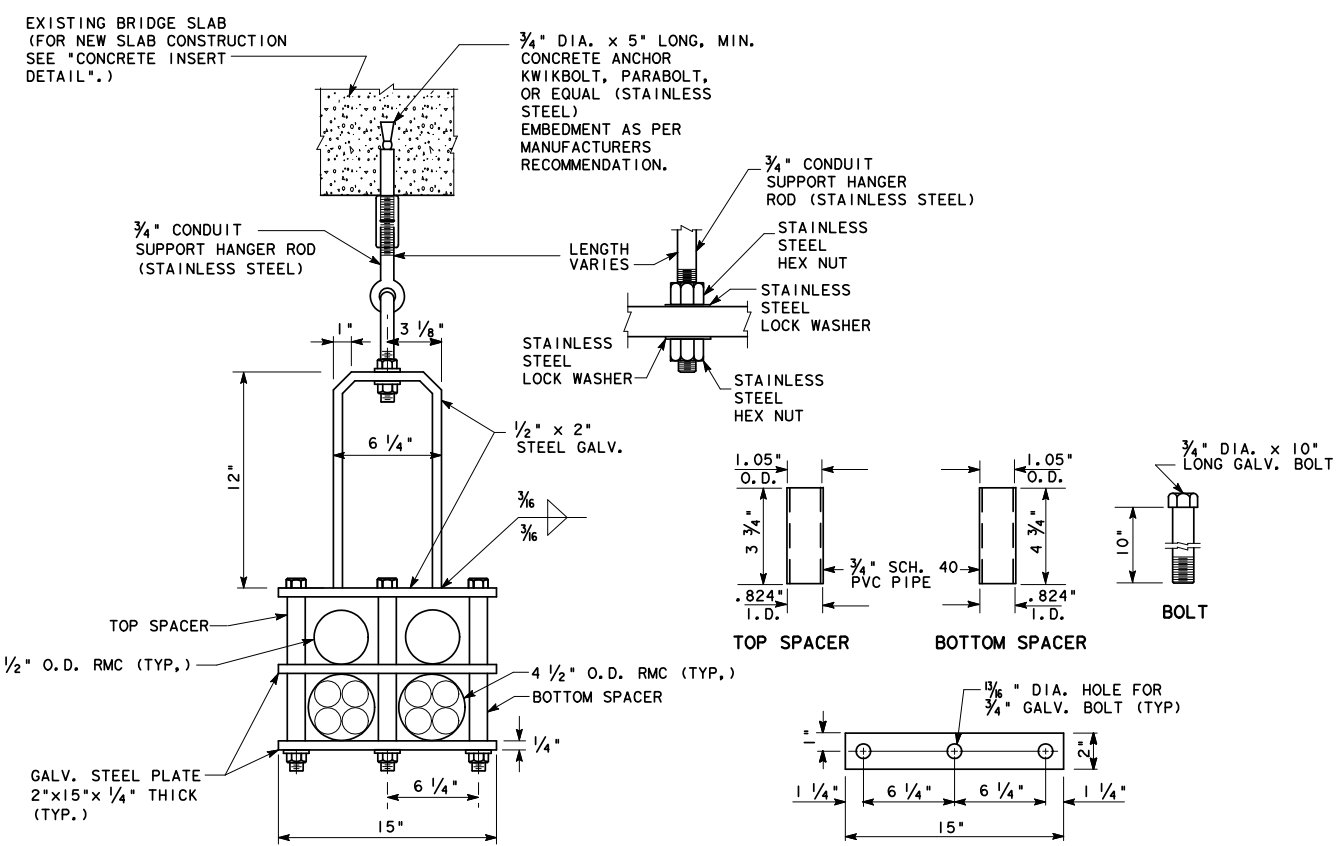
NOTE: CONDUIT CLAMP SPACING SHALL BE A MAXIMUM OF 5'.

CONDUIT CLAMP DETAIL



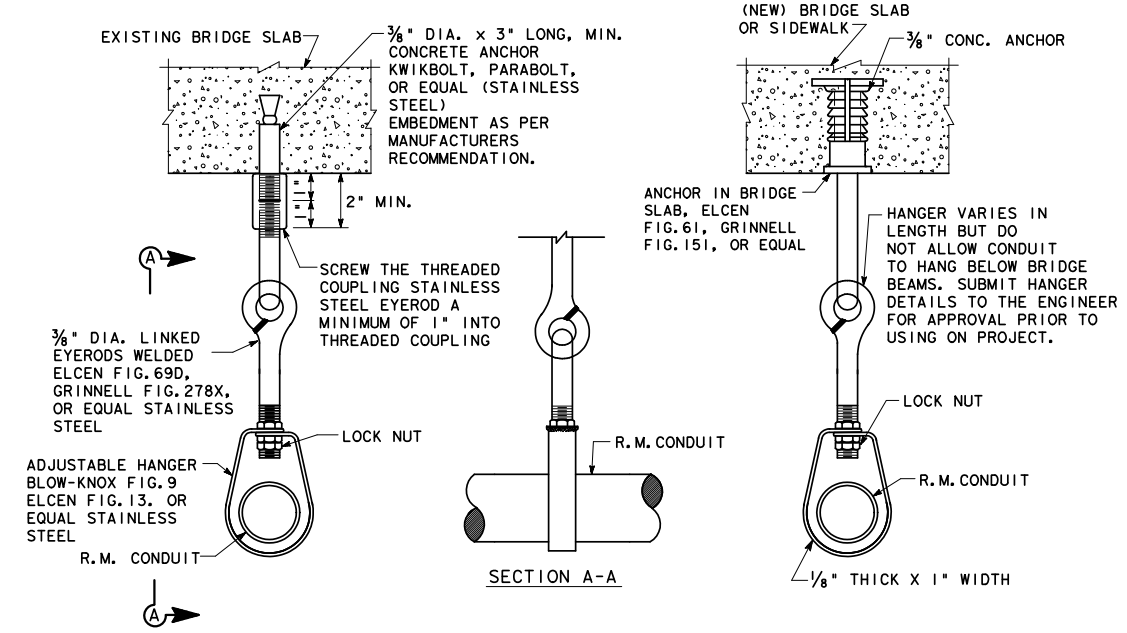
3/8" DIA. OR 3/4" DIA. GALVANIZED CAST INTO BOTTOM OF BRIDGE SLAB ELCEN FIG. 61, GRINNELL FIG. 151 OR EQUAL. (TYP.)

CONCRETE INSERT DETAIL



MULTIPLE CONDUIT SUPPORT HANGER & DETAILS

NOTE: CONTRACTOR MAY USE COMMERCIALY DESIGNED MULTIPLE CONDUIT SUPPORT HANGER, SUBMIT HANGER DETAILS TO THE ENGINEER FOR APPROVAL PRIOR TO USING ON PROJECT. MAXIMUM SPACING OF CONDUIT SUPPORT HANGERS IS 10'-0" C-C.



SINGLE CONDUIT SUPPORT DETAIL

(MAXIMUM SPACING-10'-0")

HANGER VARIES IN LENGTH BUT DO NOT ALLOW CONDUIT TO HANG BELOW BRIDGE BEAMS.

TEXAS DEPARTMENT OF TRANSPORTATION
HOUSTON DISTRICT

© 2008 TxDOT

SIGNAL DETAILS/STANDARDS
CONDUIT HANGER DETAILS
AT BRIDGE INSTALLATION
CHD/BI

(CONDUIT SUPPORT HANGER) (SHEET 2 OF 2)

SCALE	FED. RD. DIV. NO.	STATE	PROJECT NO.	HIGHWAY
N. T. S.	6	TEXAS		FM 1111
REVISIONS	STATE DISTRICT	COUNTY	CONTROL SECTION	JOB SHEET NO.
6-2008	HOU	HARRIS, ETC.	0912 00	350 00