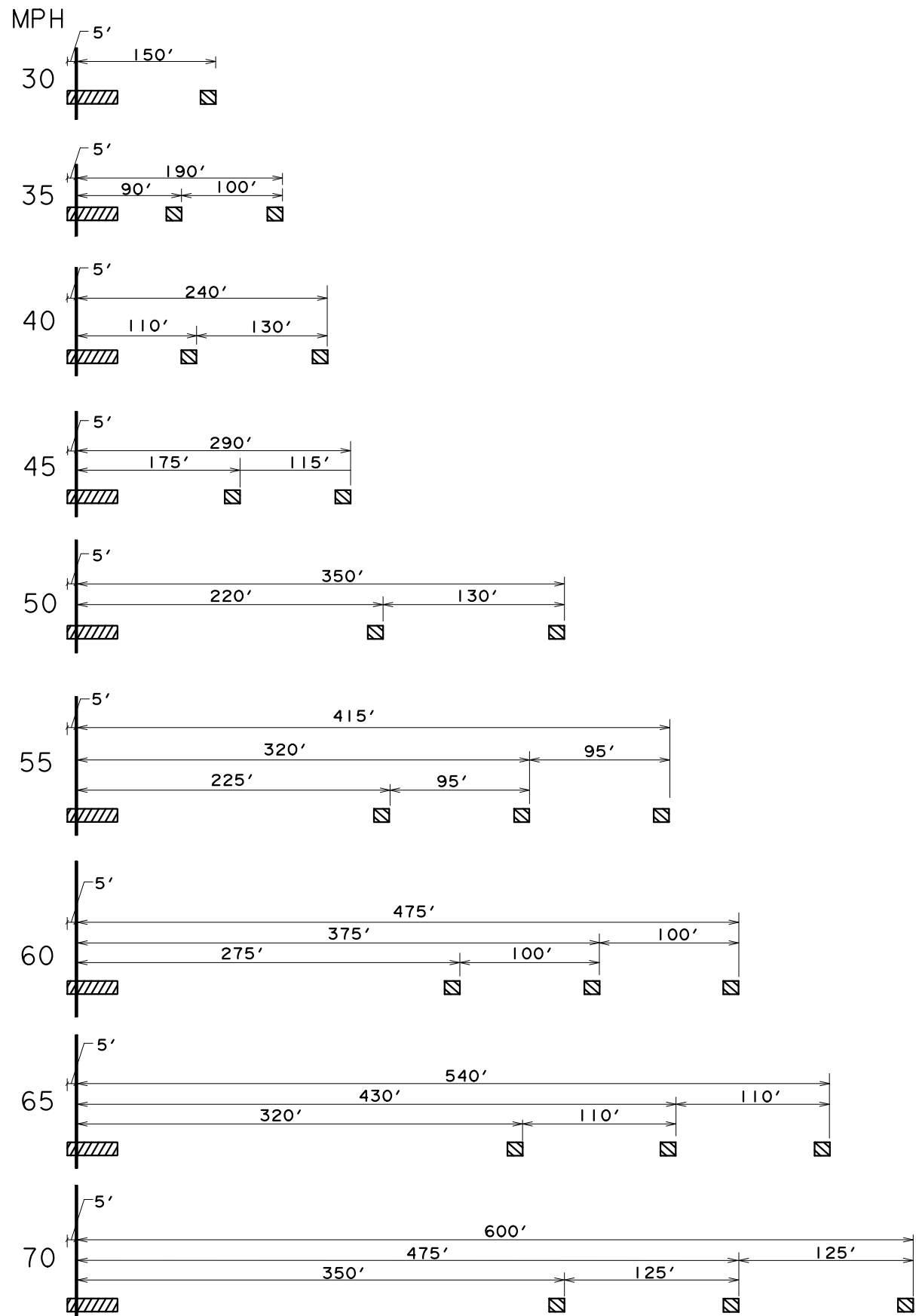
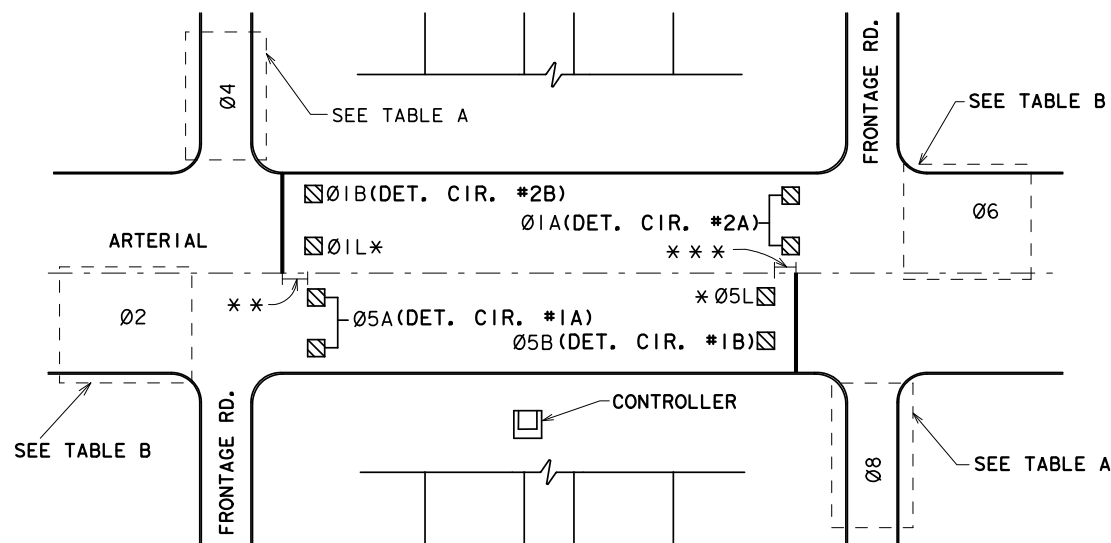
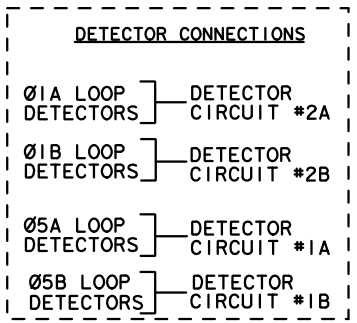


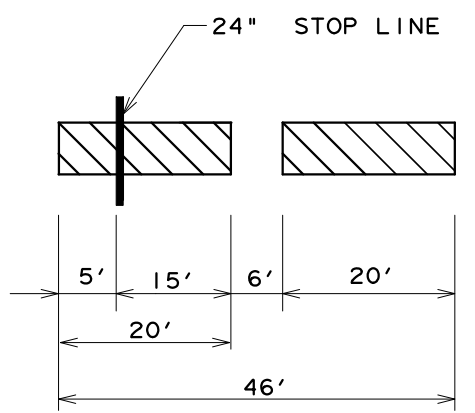
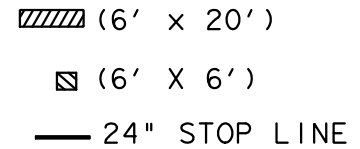
### TYPICAL LOOP DETECTOR

PLACEMENT LAYOUT FOR DIAMOND INTERCHANGE  
(Ø2 IS ALWAYS TO THE CONTROLLER'S LEFT)

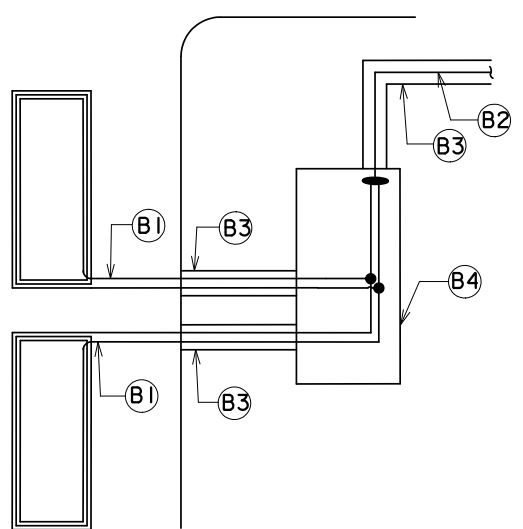
- \* USE FOR LEFT TURN ONLY
- \*\* MAKE SURE TRAFFIC TURNING FROM FRONTAGE ROAD DOES NOT MISS DETECTORS FOR Ø1A AND Ø5A.
- \*\*\* LOOP PLACEMENT IS 5 FEET FROM STOP LINE



**TABLE A**  
LOOP DETECTORS PLACEMENT  
ACCORDING TO APPROACH SPEED  
(NOT TO SCALE)



**TABLE B**  
PRESENCE DETECTORS  
PLACEMENT  
(LEFT TURN LANE  
AND  
MINOR STREET ONLY)



(B1) LOOP WIRE  
(B2) LOOP LEAD-IN TO CONTROLLER  
(B3) CONDUIT AS REQUIRED  
(B4) GROUND BOX  
● CONNECTION  
**CONNECTION FOR  
DETECTORS**

TEXAS DEPARTMENT OF TRANSPORTATION  
HOUSTON DISTRICT  
© 2011 TXDOT

**SIGNAL DETAILS/STANDARDS  
LOOP DETECTOR DETAILS  
LDDP**

SCALE	FED. RD. DIV. NO.	STATE	PROJECT NO.	HIGHWAY
N. T. S.	6	TEXAS		
REVISIONS	STATE DISTRICT	COUNTY	CONTROL SECTION	JOB SHEET NO.
	HOU			