

TABLE OF ESTIMATED FOOTING QUANTITIES (FOR ONE FOOTING) 36" DRILLED SHAFTS				
BARS	NO.	SIZE	LENGTH	WEIGHT
D	12	#11	11'-2"	712
K	6	#6	11'-2"	101
T3	23	#5	15'-7"	374
* REINFORCING STEEL				LBS 1,187
TEMPORARY SPECIAL SHORING				SF 241
CL C CONC(SIGN FOOTING)				CY 7.5
RIPRAP CONC (41N)				CY 0.9

TABLE OF ESTIMATED FOOTING QUANTITIES (FOR ONE FOOTING) 42" DRILLED SHAFTS				
BARS	NO.	SIZE	LENGTH	WEIGHT
D	12	#11	12'-11"	824
K	6	#6	12'-11"	116
T3	27	#5	16'-7"	467
* REINFORCING STEEL				LBS 1,407
TEMPORARY SPECIAL SHORING				SF 269
CL C CONC(SIGN FOOTING)				CY 9.8
RIPRAP CONC (41N)				CY 1.1

TABLE OF ESTIMATED FOOTING QUANTITIES (FOR ONE FOOTING) 48" DRILLED SHAFTS				
BARS	NO.	SIZE	LENGTH	WEIGHT
D	12	#11	14'-8"	935
K	6	#6	14'-8"	132
T3	30	#5	17'-7"	550
* REINFORCING STEEL				LBS 1,617
TEMPORARY SPECIAL SHORING				SF 298
CL C CONC(SIGN FOOTING)				CY 12.5
RIPRAP CONC (41N)				CY 1.4

TABLE OF ESTIMATED FOOTING QUANTITIES (FOR ONE FOOTING) 54" DRILLED SHAFTS				
BARS	NO.	SIZE	LENGTH	WEIGHT
D	12	#11	16'-5"	1,047
K	6	#6	16'-5"	148
T3	34	#5	18'-7"	659
* REINFORCING STEEL				LBS 1,854
TEMPORARY SPECIAL SHORING				SF 326
CL C CONC(SIGN FOOTING)				CY 15.5
RIPRAP CONC (41N)				CY 1.6

TABLE OF ESTIMATED FOOTING QUANTITIES (FOR ONE FOOTING) 60" DRILLED SHAFTS				
BARS	NO.	SIZE	LENGTH	WEIGHT
D	12	#11	18'-2"	1,158
K	6	#6	18'-2"	164
T3	37	#5	19'-7"	756
* REINFORCING STEEL				LBS 2,078
TEMPORARY SPECIAL SHORING				SF 355
CL C CONC(SIGN FOOTING)				CY 18.8
RIPRAP CONC (41N)				CY 1.9

* DOWEL BARS F ARE INCLUDED WITH SIGN COLUMN QUANTITIES

TABLE OF ESTIMATED COLUMN QUANTITIES (FOR ONE COLUMN) 4.5' x 4.5' TRUSS				
BARS	NO.	SIZE	LENGTH	WEIGHT
A	12	#11	29'-10"	1,902
B	24	#11	24'-10"	3,166
C	55	#4	1'-0"	37
D1	1	#4	29'-10"	20
D2	1	#4	24'-10"	17
E	20	#9	8'-6"	578
F	36	#11	15'-6"	2,965
H	7	#4	9'-11 1/2"	47
T1	52	#5	15'-7 1/2"	847
T2	14	#5	5'-10"	85
REINFORCING STEEL				LBS 9,664
CL C CONC(SIGN COLUMN)				CY 20.6

① QUANTITIES SHOWN ARE BASED ON A SIGN COLUMN HEIGHT OF 30'. FOR EACH LINEAR FOOT VARIATION IN HEIGHT MAKE THE FOLLOWING ADJUSTMENTS:

BARS A AND B LENGTH, 1'-0"
REINFORCING STEEL, 227 LB
CL C CONC(SIGN COLUMN), 0.76 CY.

TABLE OF ESTIMATED COLUMN QUANTITIES (FOR ONE COLUMN) 5.0' x 5.0' TRUSS				
BARS	NO.	SIZE	LENGTH	WEIGHT
A	12	#11	29'-10"	1,902
B	24	#11	24'-4"	3,102
C	55	#4	1'-0"	37
D1	1	#4	29'-10"	20
D2	1	#4	24'-4"	16
E	20	#9	9'-0"	612
F	36	#11	15'-6"	2,965
H	8	#4	10'-5 1/2"	56
T1	50	#5	16'-4"	852
T2	16	#5	5'-10"	97
REINFORCING STEEL				LBS 9,659
CL C CONC(SIGN COLUMN)				CY 21.5

② QUANTITIES SHOWN ARE BASED ON A SIGN COLUMN HEIGHT OF 30'. FOR EACH LINEAR FOOT VARIATION IN HEIGHT MAKE THE FOLLOWING ADJUSTMENTS:

BARS A AND B LENGTH, 1'-0"
REINFORCING STEEL, 228 LB
CL C CONC(SIGN COLUMN), 0.80 CY.

TABLE OF ESTIMATED COLUMN QUANTITIES (FOR ONE COLUMN) 5.5' x 5.5' TRUSS				
BARS	NO.	SIZE	LENGTH	WEIGHT
A	12	#11	29'-10"	1,902
B	26	#11	23'-10"	3,292
C	54	#4	1'-0"	36
D1	1	#4	29'-10"	20
D2	1	#4	23'-10"	16
E	21	#9	9'-6"	678
F	38	#11	15'-6"	3,129
H	8	#4	10'-11 1/2"	59
T1	50	#5	16'-1 1/2"	841
T2	16	#5	5'-10"	97
REINFORCING STEEL				LBS 10,070
CL C CONC(SIGN COLUMN)				CY 22.3

③ QUANTITIES SHOWN ARE BASED ON A SIGN COLUMN HEIGHT OF 30'. FOR EACH LINEAR FOOT VARIATION IN HEIGHT MAKE THE FOLLOWING ADJUSTMENTS:

BARS A AND B LENGTH, 1'-0"
REINFORCING STEEL, 238 LB
CL C CONC(SIGN COLUMN), 0.84 CY.

TABLE OF ESTIMATED COLUMN QUANTITIES (FOR ONE COLUMN) 6.0 x 6.0' TRUSS				
BARS	NO.	SIZE	LENGTH	WEIGHT
A	12	#11	29'-10"	1,902
B	28	#11	23'-4"	3,471
C	54	#4	1'-0"	36
D1	1	#4	29'-10"	20
D2	1	#4	23'-4"	16
E	22	#9	10'-0"	748
F	40	#11	15'-6"	3,294
H	9	#4	11'-5 1/2"	69
T1	48	#5	17'-2 1/2"	862
T2	18	#5	5'-10"	109
REINFORCING STEEL				LBS 10,527
CL C CONC(SIGN COLUMN)				CY 23.5

④ QUANTITIES SHOWN ARE BASED ON A SIGN COLUMN HEIGHT OF 30'. FOR EACH LINEAR FOOT VARIATION IN HEIGHT MAKE THE FOLLOWING ADJUSTMENTS:

BARS A AND B LENGTH, 1'-0"
REINFORCING STEEL, 251 LB
CL C CONC(SIGN COLUMN), 0.90 CY.

TABLE OF ESTIMATED COLUMN QUANTITIES (FOR ONE COLUMN) 6.5' x 6.5' TRUSS				
BARS	NO.	SIZE	LENGTH	WEIGHT
A	12	#11	29'-10"	1,902
B	30	#11	22'-10"	3,639
C	53	#4	1'-0"	35
D1	1	#4	29'-10"	20
D2	1	#4	22'-10"	15
E	23	#9	10'-6"	821
F	42	#11	15'-6"	3,459
H	9	#4	11'-11 1/2"	72
T1	48	#5	18'-3 1/2"	916
T2	18	#5	5'-10"	109
REINFORCING STEEL				LBS 10,988
CL C CONC(SIGN COLUMN)				CY 24.2

⑤ QUANTITIES SHOWN ARE BASED ON A SIGN COLUMN HEIGHT OF 30'. FOR EACH LINEAR FOOT VARIATION IN HEIGHT MAKE THE FOLLOWING ADJUSTMENTS:

BARS A AND B LENGTH, 1'-0"
REINFORCING STEEL, 264 LB
CL C CONC(SIGN COLUMN), 0.94 CY.

TABLE OF ESTIMATED COLUMN QUANTITIES (FOR ONE COLUMN) 7.0' x 7.0' TRUSS				
BARS	NO.	SIZE	LENGTH	WEIGHT
A	12	#11	29'-10"	1,902
B	30	#11	22'-4"	3,559
C	53	#4	1'-0"	35
D1	1	#4	29'-10"	20
D2	1	#4	22'-4"	15
E	23	#9	11'-0"	860
F	42	#11	15'-6"	3,459
H	10	#4	12'-5 1/2"	83
T1	46	#5	19'-0"	912
T2	20	#5	5'-10"	122
REINFORCING STEEL				LBS 10,967
CL C CONC(SIGN COLUMN)				CY 25.0

⑥ QUANTITIES SHOWN ARE BASED ON A SIGN COLUMN HEIGHT OF 30'. FOR EACH LINEAR FOOT VARIATION IN HEIGHT MAKE THE FOLLOWING ADJUSTMENTS:

BARS A AND B LENGTH, 1'-0"
REINFORCING STEEL, 266 LB
CL C CONC(SIGN COLUMN), 0.98 CY.

TABLE OF ESTIMATED COLUMN QUANTITIES (FOR ONE COLUMN) 7.5' x 7.5' TRUSS				
BARS	NO.	SIZE	LENGTH	WEIGHT
A	12	#11	29'-10"	1,902
B	32	#11	21'-10"	3,712
C	52	#4	1'-0"	35
D1	1	#4	29'-10"	20
D2	1	#4	21'-10"	15
E	24	#9	11'-6"	938
F	44	#11	15'-6"	3,624
H	10	#4	12'-11 1/2"	87
T1	44	#5	18'-9 1/2"	862
T2	20	#5	5'-10"	122
REINFORCING STEEL				LBS 11,317
CL C CONC(SIGN COLUMN)				CY 25.7

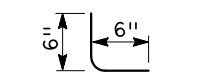
⑦ QUANTITIES SHOWN ARE BASED ON A SIGN COLUMN HEIGHT OF 30'. FOR EACH LINEAR FOOT VARIATION IN HEIGHT MAKE THE FOLLOWING ADJUSTMENTS:

BARS A AND B LENGTH, 1'-0"
REINFORCING STEEL, 276 LB
CL C CONC(SIGN COLUMN), 1.02 CY.

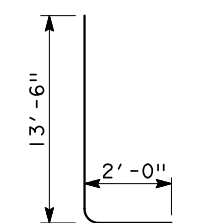
TABLE OF ESTIMATED COLUMN QUANTITIES (FOR ONE COLUMN) 8.0' x 8.0' TRUSS				
BARS	NO.	SIZE	LENGTH	WEIGHT
A	12	#11	29'-10"	1,902
B	34	#11	21'-4"	3,853
C	52	#4	1'-0"	35
D1	1	#4	29'-10"	20
D2	1	#4	21'-4"	14
E	25	#9	12'-0"	1,020
F	46	#11	15'-6"	3,789
H	11	#4	13'-5 1/2"	99
T1	44	#5	19'-10 1/2"	912
T2	22	#5	5'-10"	134
REINFORCING STEEL				LBS 11,778
CL C CONC(SIGN COLUMN)				CY 26.3

⑧ QUANTITIES SHOWN ARE BASED ON A SIGN COLUMN HEIGHT OF 30'. FOR EACH LINEAR FOOT VARIATION IN HEIGHT MAKE THE FOLLOWING ADJUSTMENTS:

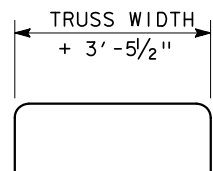
BARS A AND B LENGTH, 1'-0"
REINFORCING STEEL, 289 LB
CL C CONC(SIGN COLUMN), 1.06 CY.



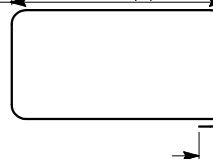
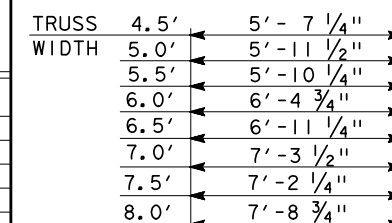
BAR C (#4)



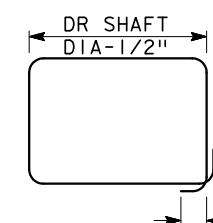
BAR F (#11)



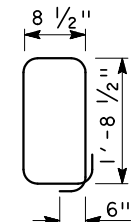
BAR H (#4)



BAR T1 (#5)



BAR T3 (#5)



BAR T2 (#5)