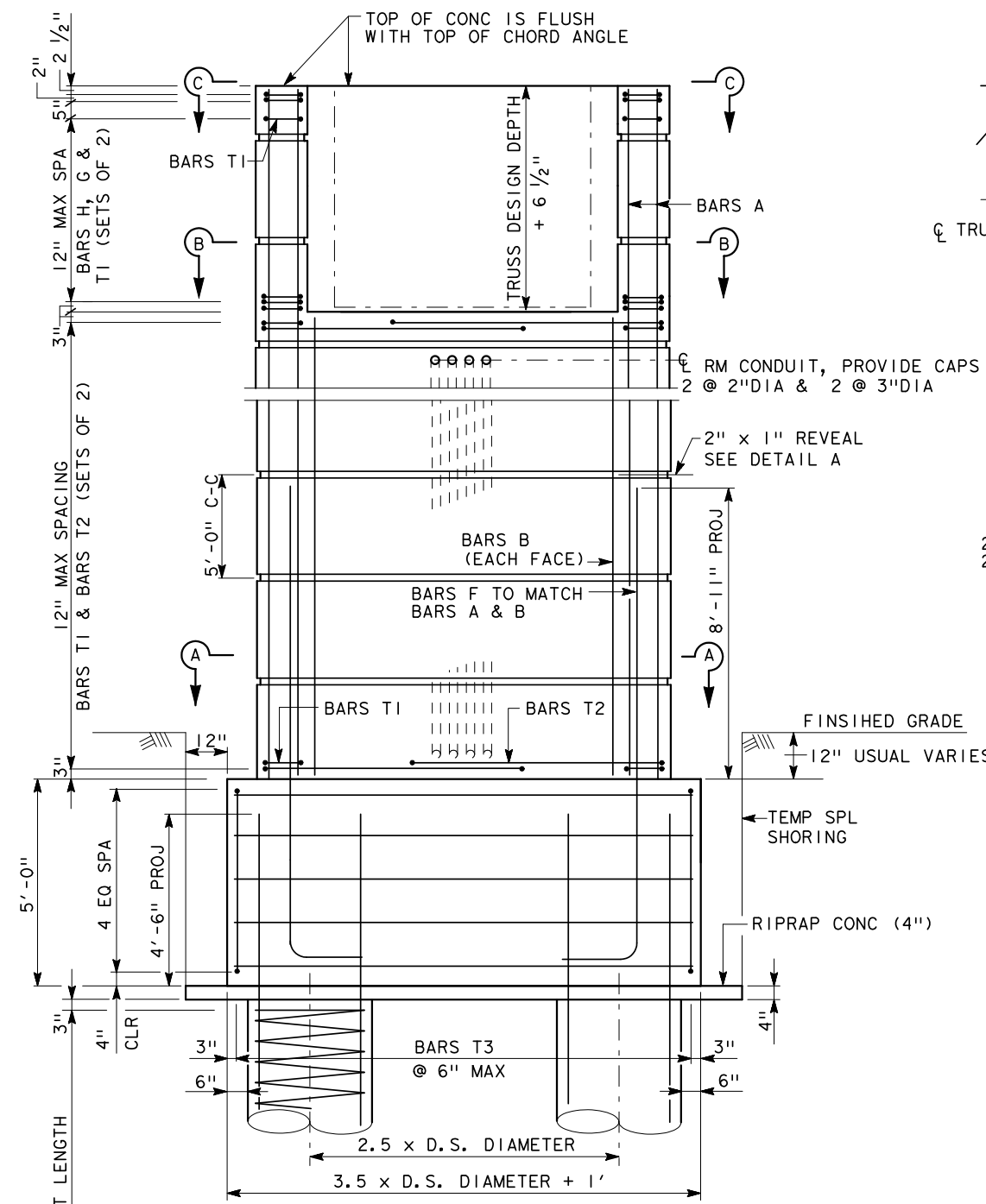
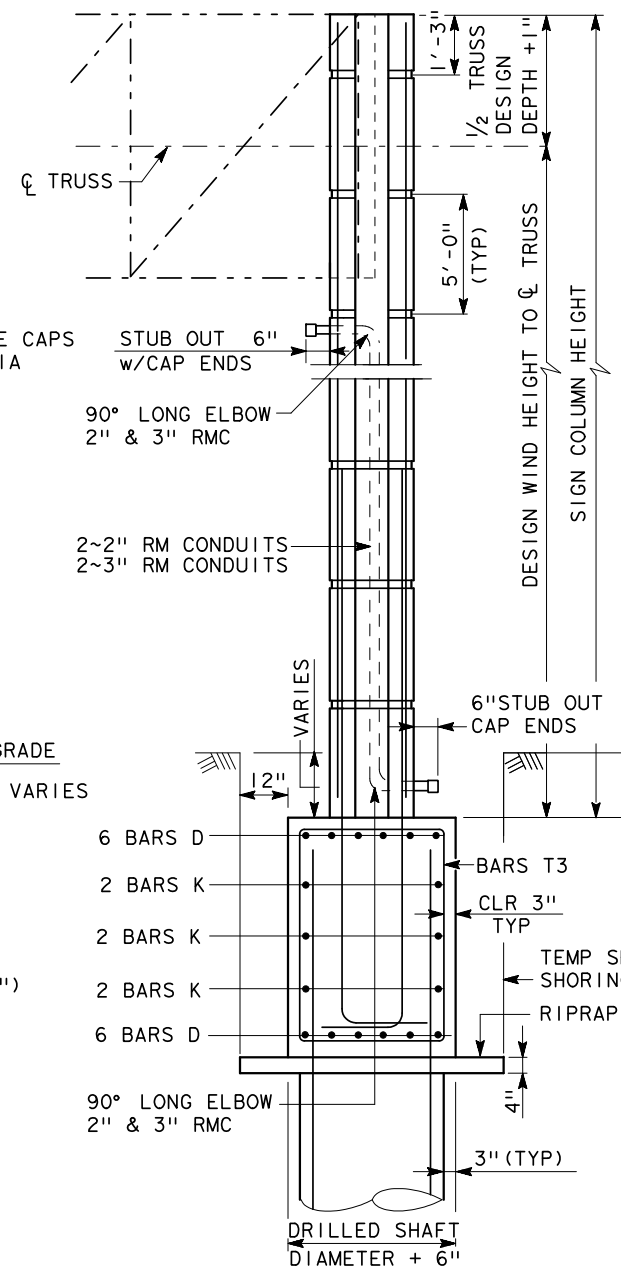


**GENERAL NOTES:**

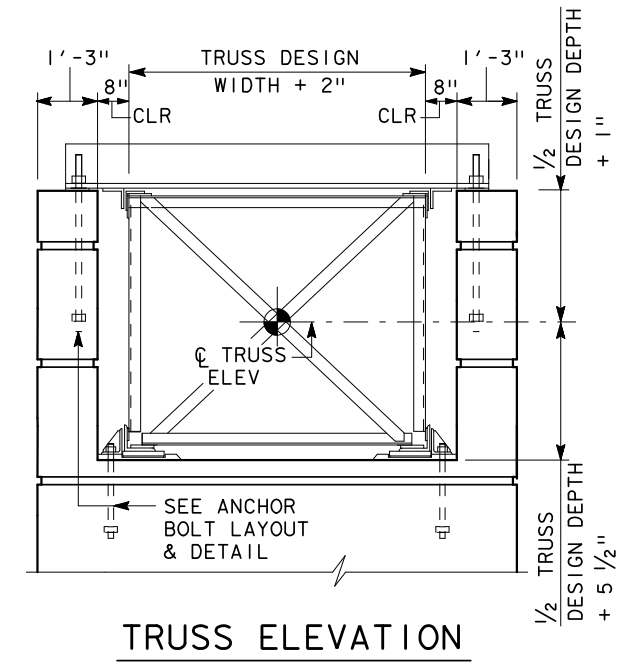
1. CONCRETE SHALL BE CLASS "C" F'c = 3600 psi.
2. ALL REINFORCING SHALL BE ASTM A615 GRADE 60.
3. ALL DIMENSIONS OF THE REINFORCING BARS ARE TO C OF BARS UNLESS OTHERWISE NOTED.
4. CHAMFER ALL EXPOSED CORNERS 3/4".
5. ANCHOR BOLT ASSEMBLIES AND ALL STEEL HARDWARE, INCLUDING CONDUIT IN THE COLUMNS ARE INCIDENTAL TO ITEM 650 OVERHEAD SIGN SUPPORTS.
6. ALL ANCHOR BOLTS SHALL BE A193-B7.
7. ALL STEEL HARDWARE SHALL BE GALVANIZED.
8. COMPONENTS OF THE STRUCTURE DESIGNED ACCORDING TO AASHTO LRFD BRIDGE DESIGN SPECIFICATIONS AND /OR AASHTO STANDARD SPECIFICATIONS FOR STRUCTURAL SUPPORTS FOR HIGHWAY SIGNS, LUMINAIRES, AND TRAFFIC SIGNALS.
9. CONCRETE COLUMNS ARE DESIGNED FOR THE EQUIVALENT AREA OF A 10'-0" DEEP SIGN PANEL OVER 100% OF THE SPAN LENGTH. DESIGN INCLUDES 3 POUNDS PER FOOT SQUARED FOR SIGN PANEL AND 20 POUNDS PER FOOT FOR LIGHTS AND 50 POUNDS PER FOOT FOR WALKWAYS OVER 100% OF THE SPAN LENGTH.



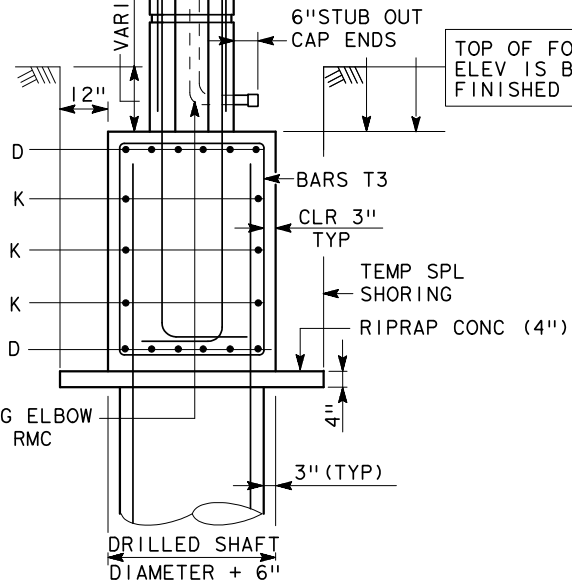
**FRONT ELEVATION**



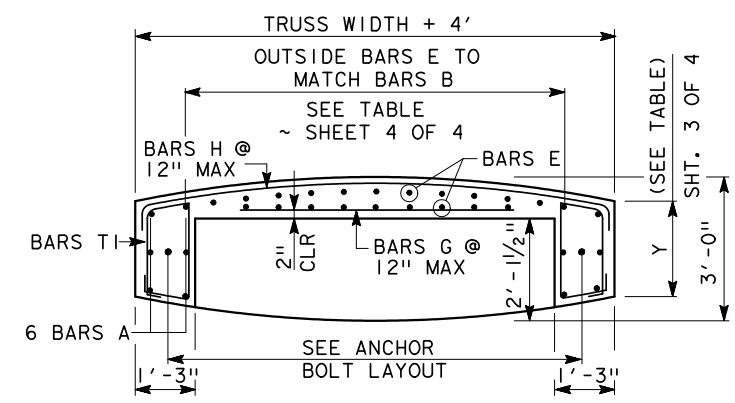
**SIDE ELEVATION**



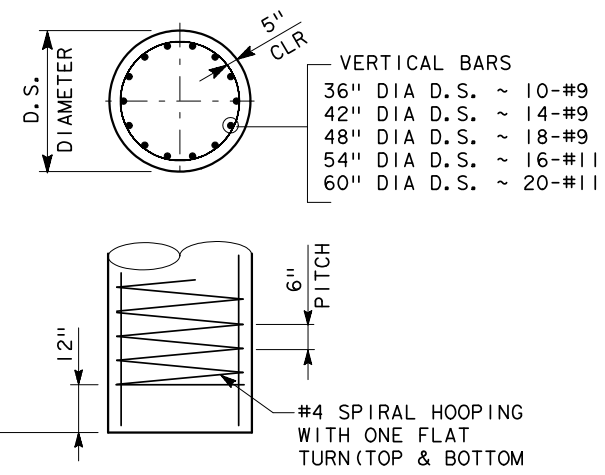
**TRUSS ELEVATION**



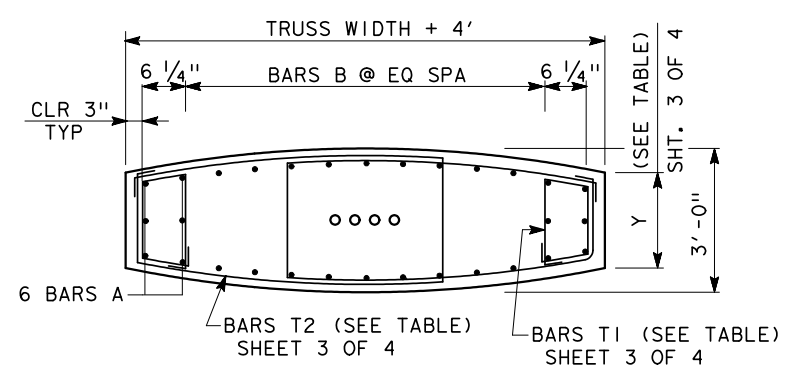
**DETAIL A**



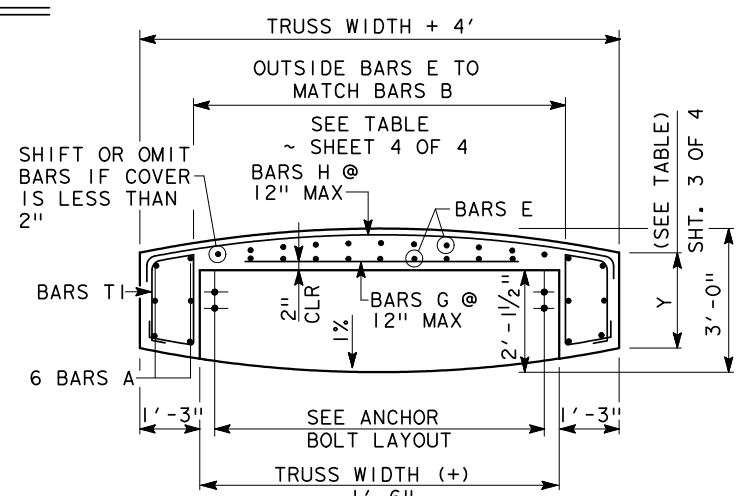
**SECTION C-C**



**FRONT ELEVATION**



**SECTION A-A**



**SECTION B-B**



**OVERHEAD SIGN BRIDGE COLUMN DETAILS WAVE SCHEME**

OSB-WS

FILE#	STDN39.DGN	DN#	HOU	CK#	HOU	DW#	HOU	CK#	HOU
©TXDOT	AUGUST 2011	DISTRICT	FED REG	PROJECT NO.		SHEET			
REVISIONS		HOUSTON	6						
		COUNTY	CONTROL	SECT	JOB	HIGHWAY			