

SECTION THRU EMBEDDED TRUSS

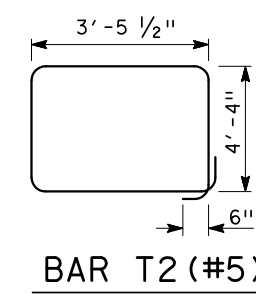
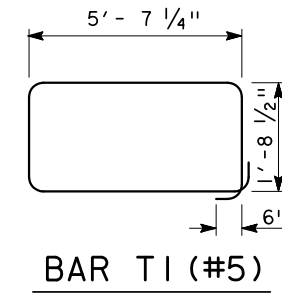
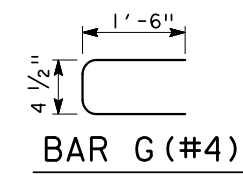
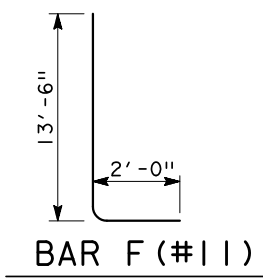


TABLE OF ESTIMATED COLUMN QUANTITIES (FOR ONE COLUMN) ① 4.5' x 4.5' TRUSS				
BARS	NO.	SIZE	LENGTH	WEIGHT
A	40	#11	29'-10"	6,340
D	12	#11	12'-11"	824
F	40	#11	15'-6"	3,294
G	74	#4	3'-4 1/2"	167
K	6	#6	12'-11"	116
T1	74	#5	15'-7 1/2"	1,206
T2	27	#5	16'-7"	467
REINFORCING STEEL			LBS	12,414
TEMPORARY SPECIAL SHORING			SF	269
CL C CONC (SIGN FOOTING)			CY	9.8
CL C CONC (SIGN COLUMN)			CY	23.3
RIPRAP CONC (4 IN)			CY	1.0

① QUANTITIES SHOWN ARE BASED ON A SIGN COLUMN HEIGHT OF 30'. FOR EACH LINEAR FOOT VARIATION IN HEIGHT MAKE THE FOLLOWING ADJUSTMENTS:

BARS A LENGTH, 1'-0"  
 REINFORCING STEEL, 250 LB  
 CL C CONC (SIGN COLUMN), 0.78 CY.



CANTILEVER OVERHEAD  
 SIGN STRUCTURE DETAILS  
 HORIZONTAL SCHEME

COSS-HS

FILE#	STDN40.DGN	DN#	HOU	CK#	HOU	DW#	HOU	CK#	HOU
©	TxDOT	AUGUST 2011	DISTRICT	FED REG	HOUSTON	6	PROJECT NO.		SHEET
REVISIONS			COUNTY	CONTROL	SECT	JOB	HIGHWAY		